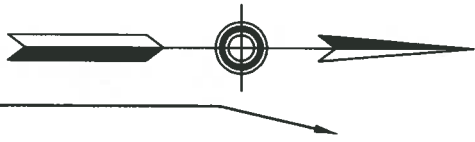


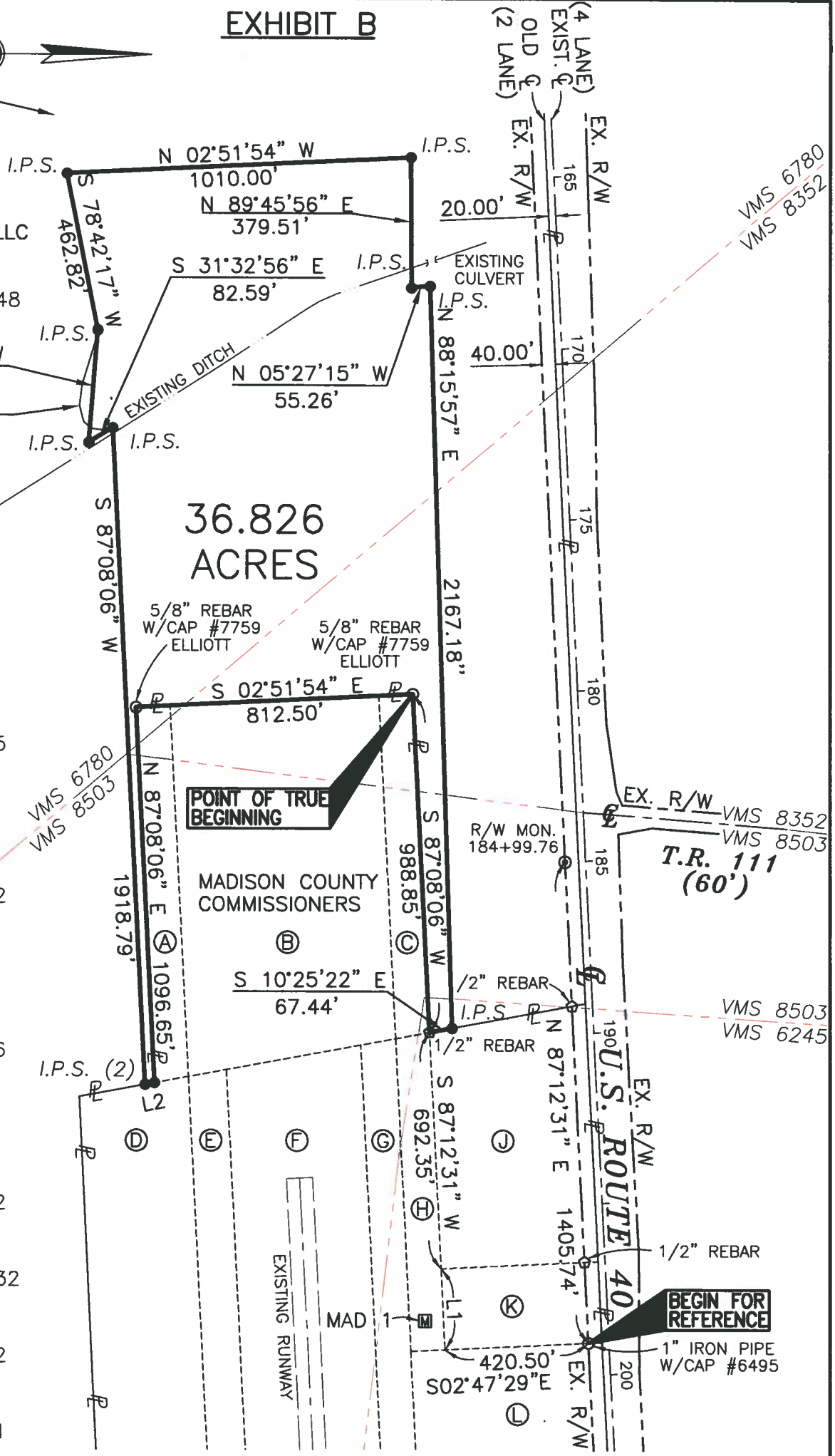
# EXHIBIT B



MIDWEST FARMS, LLC  
 24-01608.000  
 612.55 ACRES  
 O.R. 250, PG. 1948

MADISON COUNTY COMMISSIONERS

- Ⓐ 24-01607.000  
2.5023 AC.  
D.B. 268, PG. 92
- Ⓑ 24-01597.000  
14.6622 AC.  
D.B. 261, PG. 645
- Ⓒ 24-01607.000  
2.2853 AC.  
D.B. 268, PG. 92
- Ⓓ 24-01558.000  
10.0285 AC.  
D.B. 268, PG. 332
- Ⓔ 24-01624.000  
4.1159 AC.  
D.B. 261, PG. 99
- Ⓕ 24-01618.000  
15.252 AC.  
D.B. 174, PG. 226
- Ⓖ 24-01624.000  
4.1008 AC.  
D.B. 261, PG. 99
- Ⓗ 24-01558.002  
2.1196 AC.  
D.B. 268, PG. 332
- Ⓙ 24-01558.001  
7.6567 AC.  
O.R. 133, PG. 2232
- Ⓚ 24-01558.002  
2.500 AC.  
D.B. 268, PG. 332
- Ⓛ 24-01624.000  
10.7764 AC.  
D.B. 261, PG. 101



### MONUMENT LEGEND

- ⊕ R.R.S. FOUND
- ⊖ REBAR FOUND
- IRON PIN FOUND
- ⊙ R/W MONUMENT FD
- 3/4" REBAR SET WITH CAP "STANTEC"
- ▣ MONUMENT BOX

### BASIS OF BEARINGS

THE BEARING DATUM IS BASED ON THE OHIO STATE PLANE COORDINATE SYSTEM, SOUTH ZONE, A LAMBERT CONFORMAL CONIC MAP PROJECTION, NORTH AMERICAN DATUM OF 1983 ADJUSTED TO THE NATIONAL SPATIAL SYSTEM OF 2007 AND THE GRS80 ELLIPSOID USING A PRIMARY AIRPORT CONTROL STATION MONUMENT DESIGNATED "MAD 1" AND AN AZIMUTH USING A SECONDARY AIRPORT CONTROL STATION MONUMENT DESIGNATED "UYF A".

LINE DATA		
NUMBER	DIRECTION	DISTANCE
L1	S 87°12'31" W	238.20'
L2	S 10°25'22" E	28.68'



### MADISON COUNTY AIRPORT RUNWAY PROTECTION ZONE

MADISON COUNTY, SOMERFORD TOWNSHIP, OHIO  
 VIRGINIA MILITARY SURVEYS 6780, 8352, 8503



Stantec Consulting Services Inc.  
 1500 Lake Shore Drive, Suite 100  
 Columbus, Ohio 43204  
 Phone: (614) 488-4383

*Robert J. Sands*  
 Professional Surveyor #S-8053

06/23/11  
 Date

tbaker U:\1\3608\drawing\survey\drawing\WD.dwg Layout1 Layout JAN 19, 2011 11:04 AM

**MADISON COUNTY AIRPORT  
RUNWAY PROTECTION ZONE  
DESCRIPTION OF A 36.826 ACRE TRACT**

Situated in the State of Ohio, County of Madison, Township of Somerford, located in Virginia Military Surveys 6780, 8352, and 8503, being a part of that 612.55 acre tract (Auditor's Acreage) as conveyed to Midwest Farms, LLC, by deed of record in Official Record 250, Page 1948, records of the Recorder's Office, Madison County, Ohio, and being more particularly described as follows:

**Beginning for Reference** at a 1" iron pipe found with a white cap stamped #6495 in the easterly line of that 2.500 acre Parcel 2 as conveyed to the Madison County Commissioners by deed of record in Deed Book Volume 268, Page 332, at the intersection with the existing southerly right-of-way line of U.S. Route 40, said iron pipe bears North 87 degrees 12 minutes 31 seconds East, a distance of 1405.74 feet from a right-of-way monument found at an angle point in the southerly right-of-way line of U.S. Route 40 at Centerline Station 184+99.76, said iron pipe being 60.00 feet right of Centerline Station 199+05.50, as shown on the Right-of-Way Plan for U.S. Route 40 Section 0.00-6.84 on file at the Ohio Department of Transportation, District 6;

Thence South 02 degrees 47 minutes 29 seconds East, a distance of 420.50 feet, along the easterly line of said 2.500 acre Parcel 2 to the southeast corner of said 2.500 acre Parcel 2;

Thence South 87 degrees 12 minutes 31 seconds West, a distance of 236.20 feet, along the southerly line of said 2.500 acre Parcel 2, and along the northerly line of that 2.1196 acre Parcel 1 as conveyed to the Madison County Commissioners by deed of record in Deed Book Volume 268, Page 332, to the southwest corner of said 2.500 acre Parcel 2;

Thence continuing South 87 degrees 12 minutes 31 seconds West, a distance of 692.35 feet, along the northerly line of said 2.1196 acre Parcel 1, and along the southerly line of that 7.6567 acre tract as conveyed to the Madison County Commissioners by deed of record in Official Record 133, Page 2232, to a 1/2" rebar found marking the northwest corner of said 2.1196 acre Parcel 1, the southwest corner of said 7.6567 acre tract, and the northeast corner of that 2.2853 acre Parcel E-1 as conveyed to the Madison County Commissioners by deed of record in Deed Book Volume 268, Page 92;

Thence South 87 degrees 08 minutes 06 seconds West, a distance of 988.85 feet, along the northerly line of said 2.2853 acre Parcel E-1, and along a southerly line of said Midwest Farms, LLC lands, to a 5/8" rebar found with a yellow cap stamped ELLIOTT #7759 marking the northwest corner of said 2.2853 acre Parcel E-1, and being the **True Point of Beginning**;

Thence South 02 degrees 51 minutes 54 seconds East, a distance of 812.50 feet, along an easterly line of said Midwest Farms, LLC lands, along the westerly line of said 2.2853 acre Parcel E-1, along the westerly line of that 14.6622 acre tract as conveyed to the Madison County Commissioners by deed of record in Deed Book Volume 261, Page 645, and along the westerly line of that 2.5023 acre Parcel E-2 as conveyed to the Madison County Commissioners by deed of record in Deed Book Volume 268, Page 92, to a 5/8" rebar found with a yellow cap stamped ELLIOTT #7759 marking the southwest corner of said 2.5023 acre Parcel E-2;

Thence North 87 degrees 08 minutes 06 seconds East, a distance of 1096.65 feet, along a northerly line of said Midwest Farms, LLC lands, and along the southerly line of said 2.5023 acre Parcel E-2, to an iron pipe set at the southeast corner of said 2.5023 acre Parcel E-2;

Thence South 10 degrees 25 minutes 22 seconds East, a distance of 28.08 feet, along an easterly line of said Midwest Farms, LLC lands, and along the westerly line of that 10.0285 acre

Parcel 3 as conveyed to the Madison County Commissioners by deed of record in Deed Book Volume 268, Page 332, to an iron pipe set;

Thence the following eight (8) courses and distances across said Midwest Farms, LLC 621.55 acre tract:

1. South 87 degrees 08 minutes 06 seconds West, a distance of 1918.79 feet, to an iron pipe set;
2. South 31 degrees 32 minutes 56 seconds East, a distance of 82.59 feet, to an iron pipe set;
3. North 85 degrees 27 minutes 31 seconds West, a distance of 329.52 feet, to an iron pipe set;
4. South 78 degrees 42 minutes 17 seconds West, a distance of 462.82 feet, to an iron pipe set;
5. North 02 degrees 51 minutes 54 seconds West, a distance of 1010.00 feet, to an iron pipe set;
6. North 89 degrees 45 minutes 56 seconds East, a distance of 379.51 feet, to an iron pipe set;
7. North 05 degrees 27 minutes 15 seconds West, a distance of 55.26 feet, to an iron pipe set;
8. North 88 degrees 15 minutes 57 seconds East, a distance of 2167.18 feet, to an iron pipe set on the westerly line of that 7.6567 acre tract as conveyed to Madison County Commissioners by deed of record in Official Record 133, Page 2232;

Thence South 10 degrees 25 minutes 22 seconds East, a distance of 67.44 feet, to a 1/2 inch rebar found at the northeasterly corner of that 2.2853 acre tract as conveyed to Madison County Commissioners by deed of record in Deed Book 268, Page 92;

Thence South 87 degrees 08 minutes 06 seconds West, a distance of 988.85 feet, along the northerly line of said 2.2853 acre tract to the **True Point of Beginning**, containing 36.826 acres, more or less.

Of the above described area, 36.826 acres is contained within Madison County Auditor's Parcel 24-01608.000;

The bearing datum of the afore-described parcel is based on the Ohio State Plane Coordinate System, South Zone, a Lambert conformal conic map projection, the North American Datum of 1983 adjusted to the national spatial reference system of 2007 (NAD 83(NSRS 2007)), and the GRS80 ellipsoid using a primary airport control station NGS monument designated "MAD 1" and an azimuth using a secondary airport control station NGS monument designated "UYF A".

All stationing is based on the Right-of-Way Plan for U.S. Route 40 Section 0.00-6.84 on file at the Ohio Department of Transportation, District 6;

This description was based upon an actual field survey of Madison County Airport by Stantec Consulting Services, Inc., in January 2011, and prepared on June 23, 2011 by Robert J. Sands, Professional Surveyor S-8053.

Iron pipes set are 3/4 inches in diameter by 30 inches long with a plastic cap placed on top with the designation "STANTEC".

Grantor claims title by instrument of record in Official Record 250, Page 1948, of the Recorder's Office, Madison County, Ohio.

**STANTEC CONSULTING SERVICES INC.**



*Robert J. Sands* 06/23/11  
Professional Surveyor No. S-8053 Date