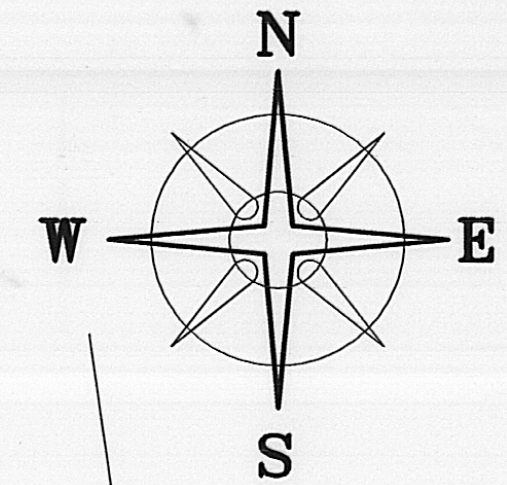


ROBISON ROAD (C-62)(45'R/W)

POINT OF COMMENCEMENT



CAROLYN J TEWKSBURY &
 RUTH ANN ERNST, TRUSTEES
 OR 216 P 2576
 120.55 ACRES

DEED REFERENCE
 GARRY E. & CAROL E.
 SCOTT, TRUSTEES
 O R 199 P 1517
 202.89 ACRES (ORIGINAL)

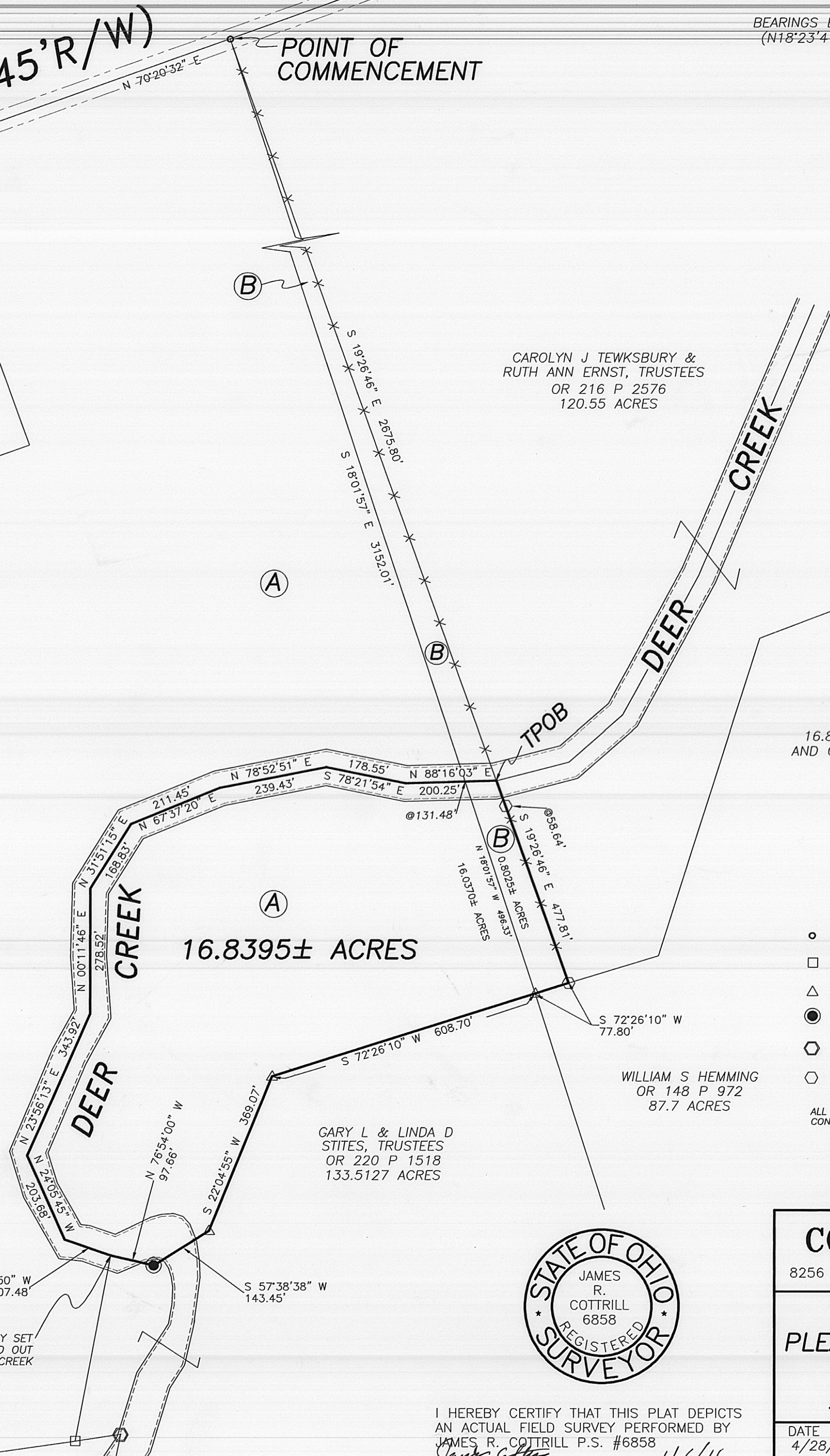
GARRY E. & CAROL E.
 SCOTT, TRUSTEES
 O R 263 P 1201
 2.815 ACRES

NOTE

16.8395 ACRE TRACT IS TO BECOME PART OF
 AND CONTINGENT TO STITES' 133.5127 ACRE TRACT.

LEGEND

- MAG NAIL (FOUND)
 - 5/8" DIA. SOLID IRON PIN (FOUND)
 - △ RECORD CORNER STONE (FOUND)
 - 3/4" DIA. SOLID IRON PIN (FOUND)
 - ⬡ 5/8" Ø REBAR & YELLOW PLASTIC CAP STAMPED "COTTRILL 6858" (PREVIOUSLY SET)
 - ⬢ 5/8" Ø REBAR & YELLOW PLASTIC CAP STAMPED "COTTRILL 6858" (SET)
- ALL MONUMENTS FOUND OR SET ARE IN GOOD CONDITION UNLESS OTHERWISE NOTED.



16.8395± ACRES

GARY L & LINDA D
 STITES, TRUSTEES
 OR 220 P 1518
 133.5127 ACRES

WILLIAM S HEMMING
 OR 148 P 972
 87.7 ACRES

IP+C PREVIOUSLY SET
 HAS BEEN WASHED OUT
 BY DEER CREEK

REVISED 1/05/11



I HEREBY CERTIFY THAT THIS PLAT DEPICTS
 AN ACTUAL FIELD SURVEY PERFORMED BY
 JAMES R. COTTRILL P.S. #6858
 DATE: 4/6/11

COTTRILL SURVEYING, L.L.C.

8256 S.R. 207 N.E. MT. STERLING, OHIO 43143 PH. (740) 869-3811

16.8395 ACRES, V.M.S.1315
 PLEASANT TOWNSHIP, MADISON COUNTY
 STATE OF OHIO
 SURVEYED FOR GARRY SCOTT

DATE DRAWN: 4/28/10	SCALE: 1" = 200'	CREW: MW
JOB # 6100409	200' 100' 0 200'	DWN. BY: RC
P. B. # 42		CK. BY:

16.8395 Acre Tract Surveyed for Garry Scott

The following described 16.8395 acre tract is situated in the State of Ohio, Madison County, Pleasant Township, VMS 1315, being part of a 202.89 original acre tract conveyed to Garry E. and Carol E. Scott, Trustees by Official Record 199 page 1517 and part of a 2.815 acre tract also conveyed to Garry E. and Carol E. Scott, Trustees by Official Record 263 page 1201 , and being more particular described as follows:

Commencing at a mag nail found in the centerline of Robinson Road (County Road 62)(45 ft. right-of-way) said spike being at the northeast corner of said 202.89 original acre tract, the north corner of said 2.815 acre tract, and the northwest corner of a 120.55 acre tract conveyed to Carolyn J. Tewksbury and Ruth Ann Ernst, Trustees by Official Record 16 page 627;

Thence, with the west line of said 120.55 acre tract, South 19° 26 minutes 46 seconds East a distance of 2675.80 ft. to a point in the centerline of Deer Creek and **The True Point Beginning;**

Thence, continuing with the west line of said 120.55 acre tract, South 19° 26 minutes 46 seconds East, passing an iron pin and cap set on the south bank of said Deer Creek at 58.64 ft., a total distance of 477.81 ft. to an iron pin and cap set at the base of a wood corner fence post in the north line of an 87.7 acre tract conveyed to William S. Hemming by Official Record 148 page 972;

Thence, with the north line of said 87.7 acre tract, South 72° 26 minutes 10 seconds West a distance of 77.80 ft. to a cornerstone found at the northeast corner of a 133.5127 acre tract conveyed to Gary L. and Linda D. Stites, Trustees by Official Record 220 page 1518, also the south corner common to said 2.815 acre tract and 202.89 original acre tract;

Thence, with said 133.5127 acre tract, the following four courses:

- 1) South 72° 26 minutes 10 seconds West a distance of 608.70 ft. to a cornerstone found
- 2) South 22° 04 minutes 55 seconds West a distance of 369.07 ft. to a cornerstone found
- 3) South 57° 38 minutes 38 seconds West a distance of 143.45 ft. to a ¾" rebar found
- 4) North 76° 54 minutes 00 seconds West a distance of 97.66 ft. corner to said original 205.705 acre tract (iron pin and cap previously set has been washed out by Deer Creek) this corner is now near the center of Deer Creek

Thence, with a new line across said 205.705 original acre tract and the center of Deer Creek, the following 9 new courses:

- 1) North 70° 44 minutes 50 seconds West a distance of 107.48 ft.
- 2) North 24° 05 minutes 45 seconds West a distance of 203.68 ft.
- 3) North 23° 56 minutes 13 seconds East a distance of 343.92 ft.
- 4) North 00° 11 minutes 46 seconds East a distance of 278.52 ft.
- 5) North 31° 51 minutes 15 seconds East a distance of 168.83 ft.
- 6) North 67° 37 minutes 20 seconds East a distance of 211.45 ft.
- 7) North 78° 52 minutes 51 seconds East a distance of 239.43 ft.
- 8) South 78° 21 minutes 54 seconds East a distance of 178.55 ft.
- 9) North 88° 16 minutes 03 seconds East, passing the line between said 202.89 and 2.815 acre tracts at 131.48 feet, a total distance of 200.25 ft. returning to **The True Point Beginning** containing **16.8395 Acres** more or less.

The herein above described 16.8395 acre tract is to become part of and contingent to 133.5127 acre tract.

Bearings are based on the southwest line of Scott's 205.705 original acre tract (North 18° 23 minutes 41 seconds West) as described in Official Record 199 page 1517.

This deed is subject to and with the benefit of all legal highways, restrictions, easements, limitations, and reservations, of record, if any and to zoning restrictions which have been imposed thereon, if any.

All iron pins set are 5/8 inch diameter rebar with yellow plastic caps stamped "Cottrill L.L.C. 6858."

This description is based on a field survey performed April 28, 2010 by James R. Cottrill registration #6858. (Job #S100409) revised January 5, 2011


James R. Cottrill, P.S.

