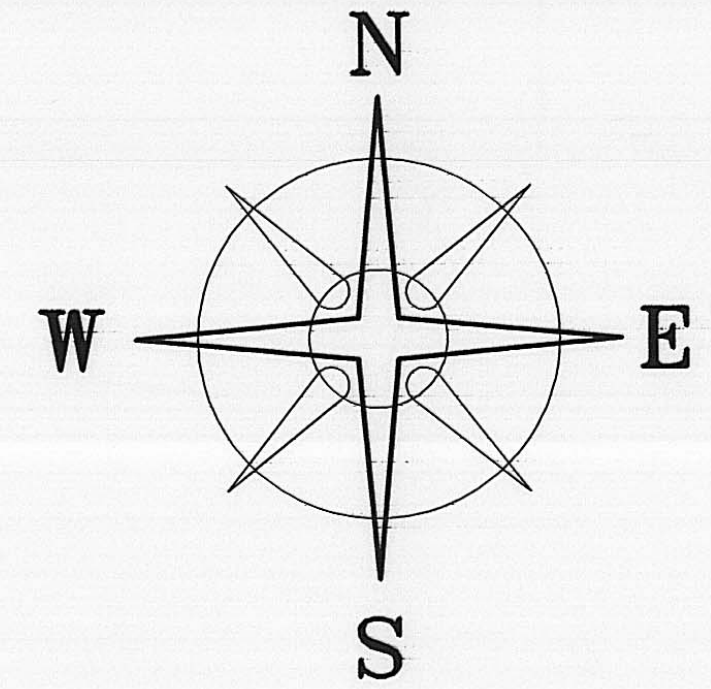
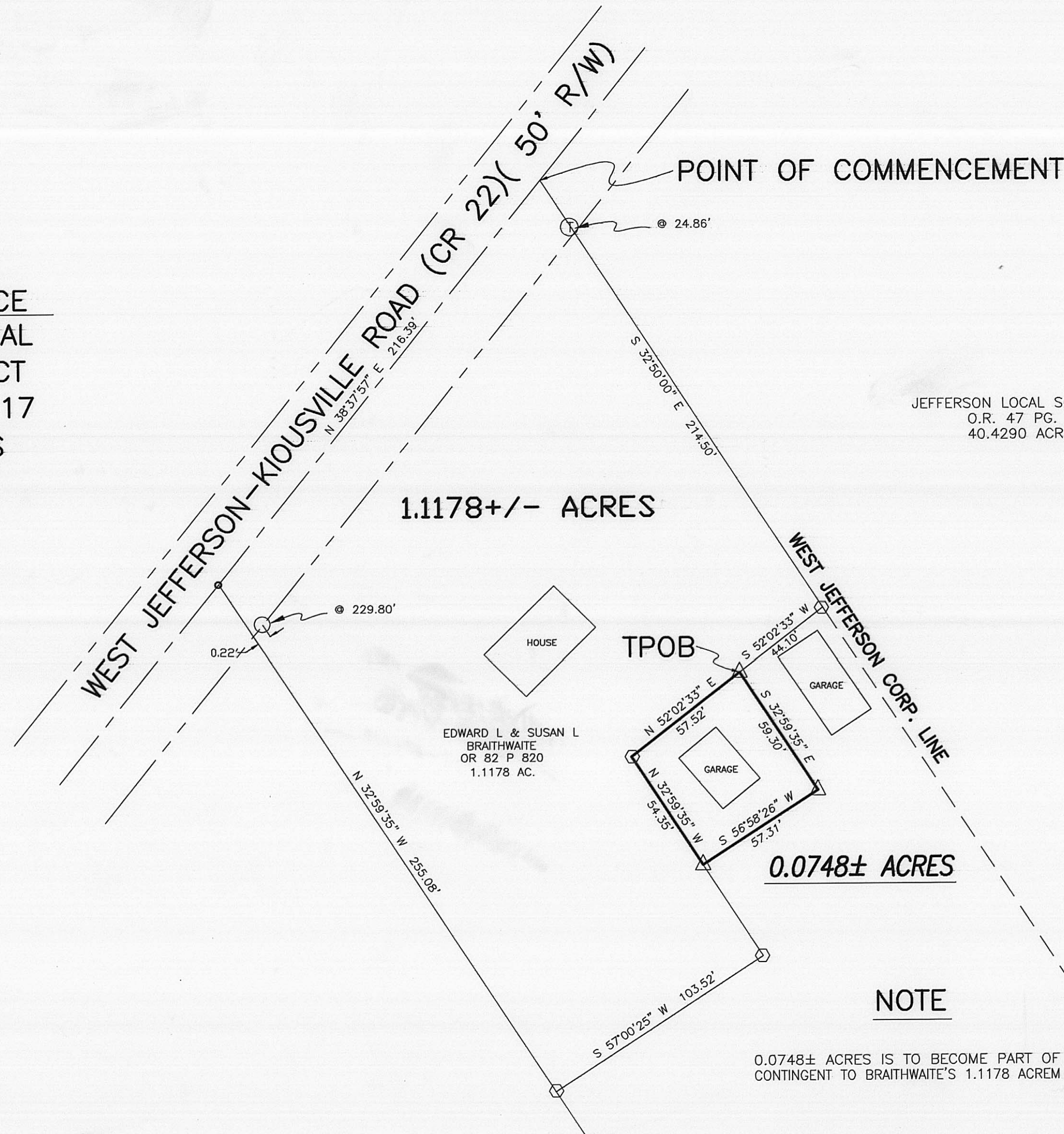


DEED REFERENCE
JEFFERSON LOCAL
SCHOOL DISTRICT
O.R. 47 PG. 1117
6.6122 ACRES



BEARINGS BASED ON N.E. LINE OF SAID 6.6122 AC. TRACT (S32°50'E) AS DESCRIBED IN O.R. 47 PG. 1117

JEFFERSON LOCAL SCHOOL DISTRICT
O.R. 47 PG. 1117
40.4290 ACRES



LEGEND

- ⊕ 3/4" IRON TEE BAR & CAP (FOUND)
- P K NAIL (FOUND)
- ⬡ 5/8" ⌀ REBAR & YELLOW PLASTIC CAP STAMPED "COTTRILL 6858" (PREVIOUSLY SET)
- ⬠ 5/8" ⌀ REBAR & YELLOW PLASTIC CAP STAMPED "COTTRILL 6858" (SET)

ALL MONUMENTS FOUND OR SET ARE IN GOOD CONDITION UNLESS OTHERWISE NOTED.



JAMES R. COTTRILL P.S.
8256 S.R. 207 N.E. MT. STERLING, OHIO 43143 PH. (740) 869-3811

**SURVEY OF 0.0748± ACRES, VMS 8480,
JEFFERSON TOWNSHIP, MADISON COUNTY,
STATE OF OHIO.
SURVEYED FOR ED BRAITHWAITE**

I HEREBY CERTIFY THAT THIS PLAT DEPICTS AN ACTUAL FIELD SURVEY PERFORMED BY JAMES R. COTTRILL P.S. #6858

James R. Cottrill DATE: 11/3/10

DATE DRAWN: 11/02/10	SCALE : 1" = 40'	CREW: MW
JOB # S101101	40' 20' 0 40'	DWN. BY: RC
F. B. #		CK. BY:

0.0748 Acre Tract
Surveyed for Ed Braithwaite

The following described 0.0748 acre tract is situated in the State of Ohio, Madison County, Jefferson Township, VMS 8480, and being part of a 6.6122 acre tract conveyed to Jefferson Local School District by Official Record 47 page 1117, and being more particularly described as follows:

Commencing at the intersection of the centerline of West Jefferson-Kiousville Road (County Road 22)(50 ft. right-of-way) with the West Jefferson Corporation Line, also the northeast corner of a 1.1178 acre tract conveyed to Edward L. and Susan L. Braithwaite by Official Record 82 page 820, said point is also the northwest corner of a 40.4290 acre tract conveyed to Jefferson Local School District by Official Record 47 page 1117;

Thence, with said corporation line and the line between said 1.1178 and 40.4290 acre tracts, South 32° 50 minutes 00 seconds East, passing a "Tee" bar and cap found at 24.86 ft., a total distance of 214.50 ft. to an iron pin and cap previously set;

Thence, with the line between said 1.1178 and 6.6122 acre tracts, South 52° 02 minutes 33 seconds West a distance of 44.10 ft. to an iron pin and cap set at **The True Point Beginning**;

Thence, across 6.6122 acre tract, the following two courses:

- 1) South 32° 59 minutes 35 seconds East a distance of 59.30 ft. to an iron pin and cap set
- 2) South 56° 58 minutes 26 seconds West a distance of 57.31 ft. to an iron pin and cap set in the line of said 1.1178 acre tract;

Thence, with said 1.1178 acre tract the following 2 courses:

- 1) North 32° 59 minutes 35 seconds West a distance of 54.35 ft. to an iron pin and cap previously set
- 2) North 52° 02 minutes 33 seconds East a distance of 57.52 ft. returning to **The True Point Beginning** containing **0.0748 Acres** more or less.

The hereinabove described 0.0748 acre tract is to become part of and contingent to Braithwaite's 1.1178 acre tract.

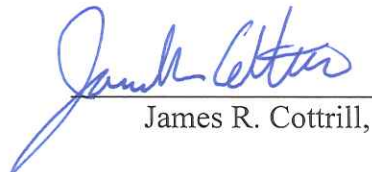
Bearings are based on the northeast line of said 6.6122 acre tract (South 32° 50 minutes East) as described in Official Record 47 page 1117. .

This deed is subject to and with the benefit of all legal highways, restrictions, easements, limitations, and reservations, of record, if any and to zoning restrictions which have been imposed thereon, if any.

All iron pins set are 5/8 inch diameter rebar with yellow plastic caps stamped "Cottrill L.L.C. 6858."

This description is based on a field survey performed November 1, 2010 by James R. Cottrill registration #6858. (Job #S101101)




James R. Cottrill,