

SURVEY FOR STANLEY FORREST

STATE OF OHIO, COUNTY OF CHAMPAIGN AND TOWNSHIP OF GOSHEN, COUNTY OF MADISON AND TOWNSHIP OF SOMERFORD, V.M.S. 4731, V.M.S. 5435, V.M.S. 8041, V.M.S. 5436, V.M.S. 5478

187.124 Acres

(2.607 acres in R/W)

Part of Margaret L. Forrest, Trustee's (1/2 interest) 31.25 acre Tract 2, 62.50 acre Tract 2, and part of her original 173.63 acre Tract 3 described in Champaign County Official Record 441, page 1843 and Madison County Official Record 201, page 2265 and being part of Stanley L. Forrest, Trustee's (1/2 interest) 31.25 acre Tract 2, 62.50 acre Tract 2, and part of his original 173.63 acre Tract 3 described in Champaign County Official Record 441, page 1850 and Madison County Official Record 201, page 2272

Champaign County Goshen Township = 95.528 acres

- 31.25 acre Tract 2 = 30.018 acres
- 62.50 acre Tract 2 = 37.257 acres
- 173.63 acre Tract 3 = 28.253 acres
- V.M.S. 4731 = 67.276 acres
- V.M.S. 5436 = 16.492 acres
- V.M.S. 5435 = 11.760 acres

Madison County Somerford Township = 91.595 acres

- 62.50 acre Tract 2 = 0.183 acres
- 173.63 acre Tract 3 = 91.412 acres
- V.M.S. 4731 = 0.183 acres
- V.M.S. 5436 = 24.623 acres
- V.M.S. 5435 = 38.495 acres
- V.M.S. 8041 = 27.386 acres
- V.M.S. 5478 = 0.908 acres

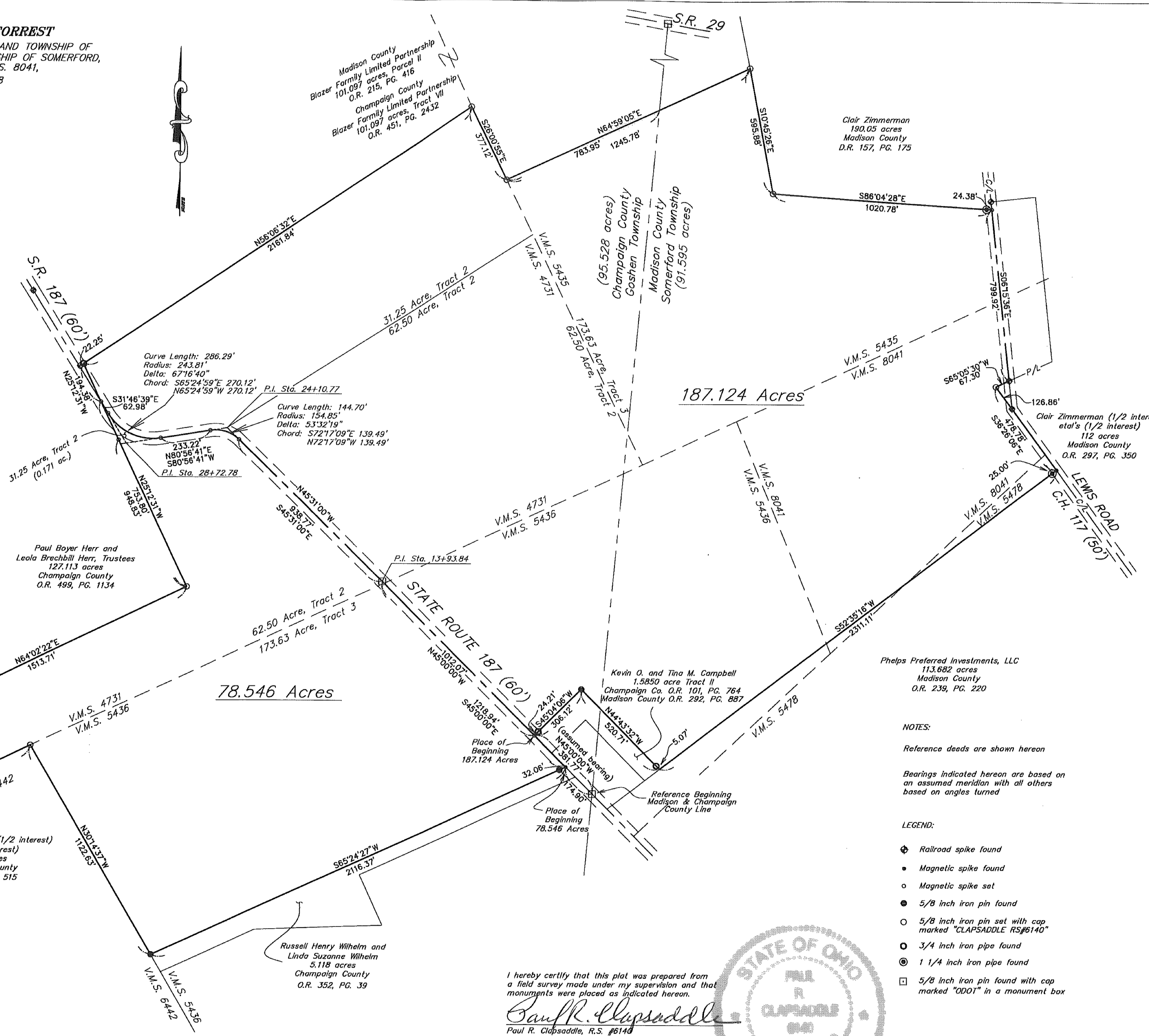
78.546 ACRES

(1.921 acres in R/W)

Part of Margaret L. Forrest, Trustee's (1/2 interest) 31.25 acre Tract 2, 62.50 acre Tract 2, and part of her original 173.63 acre Tract 3 described in Champaign County Official Record 441, page 1843 and part of Stanley L. Forrest, Trustee's (1/2 interest) 31.25 acre Tract 2, 62.50 acre Tract 2, and part of his original 173.63 acre Tract 3 described in Champaign County Official Record 441, page 1850

Champaign County Goshen Township = 78.546 acres

- 31.25 acre Tract 2 = 0.171 acres
- 62.50 acre Tract 2 = 27.742 acres
- 173.63 acre Tract 3 = 50.633 acres
- V.M.S. 4731 = 27.913 acres
- V.M.S. 5436 = 50.633 acres



Paul Boyer Herr and Leola Brechbill Herr, Trustees
127.113 acres
Champaign County
O.R. 499, PG. 1134

Marion E. Lippencott (1/2 interest) et al (1/2 interest)
134.46 acres
Champaign County
O.R. 498, PG. 515

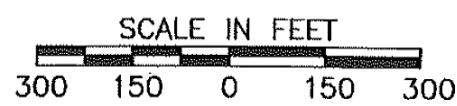
Russell Henry Wilhelm and Linda Suzanne Wilhelm
5.118 acres
Champaign County
O.R. 352, PG. 39

Kevin O. and Tina M. Campbell
1.5850 acre Tract II
Champaign Co. O.R. 101, PG. 764
Madison County O.R. 292, PG. 887

Phelps Preferred Investments, LLC
113.682 acres
Madison County
O.R. 239, PG. 220

NOTES:
Reference deeds are shown hereon
Bearings indicated hereon are based on an assumed meridian with all others based on angles turned

- LEGEND:
- ⊕ Railroad spike found
 - Magnetic spike found
 - Magnetic spike set
 - 5/8 inch iron pin found
 - 5/8 inch iron pin set with cap marked "CLAPSADDLE RS#6140"
 - 3/4 inch iron pipe found
 - ⊙ 1 1/4 inch iron pipe found
 - 5/8 inch iron pin found with cap marked "001" in a monument box

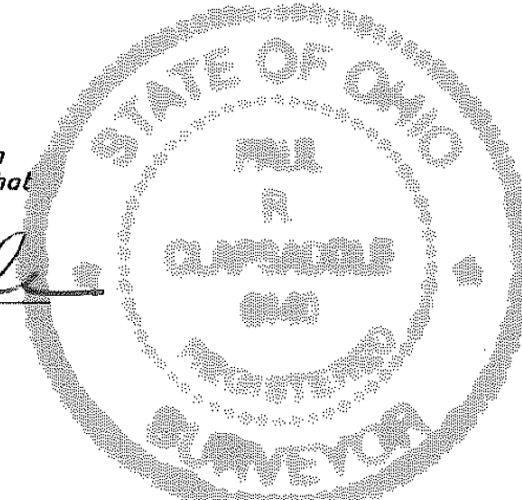


Paul R. Clapsaddle and Associates
REGISTERED ENGINEERS AND SURVEYORS
19019 WEST DARBY ROAD, MARYSVILLE OHIO 43040
(937) 747-2599
Paul R. Clapsaddle, P.E., P.S.

Date: February 8, 2012
Scale: 1"=300'
Project: ForrestFrmApr10
Drawing: ForrestSouthFarmAugust10

I hereby certify that this plat was prepared from a field survey made under my supervision and that monuments were placed as indicated hereon.

Paul R. Clapsaddle
Paul R. Clapsaddle, R.S. #6140



SURVEY FOR STANLEY FORREST
78.546 Acres
February 8, 2012

The following described 78.546 acre tract of land is situated in the State of Ohio, County of Champaign, Township of Goshen, V.M.S. 4731, and V.M.S. 5436, being part of Margaret L. Forrest, Trustee's (1/2 interest) 31.25 acre Tract 2, 62.50 acre Tract 2, and part of her original 173.63 acre Tract 3 described in Official Record 441, page 1843, and being part of Stanley L. Forrest, Trustee's (1/2 interest) 31.25 acre Tract 2, 62.50 acre Tract 2 and part of his original 173.63 acre Tract 3 described in Official Record 441, page 1850, and said 78.546 acre tract being more particularly described as follows:

Beginning for reference at a 5/8 inch iron pin found with cap marked "ODOT SURVEY PT" inside a monument box on the centerline of State Route 187 (60 feet wide), said iron pin being in the east line of Champaign County and Goshen Township and in the west line of Madison County and Somerford Township;

Thence North 45°00'00" West (assumed bearing) 174.90 feet, to a magnetic spike found at the north corner of Russell Henry Wilhelm and Linda Suzanne Wilhelm's 5.118 acre tract described in Official Record 352, page 39 and in a south line of said original 173.63 acre tract, said spike also marking the **place of beginning**;

Thence **South 65°24'27" West 2116.37 feet**, following a south line of said original 173.63 acre tract and the north line of said 5.118 acre tract, passing at 32.06 feet a 5/8 inch iron pin found, to a 5/8 inch iron pin found in the east line of Marion E. Lippencott (1/2 interest) et al's (1/2 interest) 134.46 acre tract described in Official Record 498, page 515, in the east line of V.M.S. 6442, and in the west line of V.M.S. 5436;

Thence **North 30°14'37" West 1122.63 feet**, following a west line of said original 173.63 acre tract and V.M.S. 5436 and an east line of said 134.46 acre tract and V.M.S. 6442, to an iron pin set in the south line of V.M.S. 4731 and said 62.50 acre tract;

Thence **South 64°26'10" West 535.01 feet**, following a south line of said 62.50 acre tract and V.M.S. 4731 and a north line of said 134.46 acre tract and V.M.S. 6442, to an iron pin set at an east corner of Paul Boyer Herr and Leola Brechbill Herr, Trustees' 127.113 acre tract described in Official Record 499, page 1134;

Thence **North 26°51'39" West 349.81 feet**, following a west line of said 62.50 acre tract and V.M.S. 4731 and an east line of said 127.113 acre tract and V.M.S. 6442, to an iron pin set;

Thence **North 64°02'22" East 1513.71 feet**, entering V.M.S. 4731, following a north line of said 62.50 acre tract and a south line of said 127.113 acre tract, to an iron pin set;

Thence **North 25°12'31" West 948.83 feet**, following a west line of said 62.50 acre tract and said 31.25 acre tract, and following an east line of said 127.113 acre tract, passing at 753.80 feet an iron pin set, to a magnetic spike set in the centerline of State Route 187;

Thence **South 31°46'39" East 62.98 feet**, entering said 31.25 acre tract, to a magnetic spike set;

Thence following the centerline of State Route 187 on a curve to the left, said curve having a **curve length of 286.29 feet, a radius of 243.81 feet, a delta of 67°16'40" and a chord bearing South 65°24'59" East 270.12 feet**, to a magnetic spike set in the north line of said 62.50 acre tract;

Thence **North 80°56'41" East 233.22 feet**, following the centerline of State Route 187, the north line of said 62.50 acre tract, and the south line of said 31.25 acre tract, to a magnetic spike set;

Thence entering said 62.50 acre tract and following the centerline of State Route 187 on a curve to the right, said curve having a **curve length of 144.70 feet, a radius of 154.85 feet, a delta of 53°32'19" and a chord bearing South 72°17'09" East 139.49 feet**, to a magnetic spike set;

Thence **South 45°31'00" East 938.77 feet**, following the centerline of State Route 187, to a 5/8 inch iron pin found with cap marked "ODOT SURVEY PT" inside a monument box;

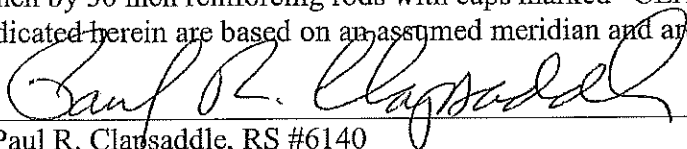
Thence **South 45°00'00" East 1218.94 feet**, following the centerline of State Route 187, crossing the south line of said 62.50 acre tract and V.M.S. 4731, and crossing the north line of said 173.63 acre tract and V.M.S. 5436, to the **place of beginning, containing 78.546 acres**, more or less, and being subject to all valid easements and restrictions of record.

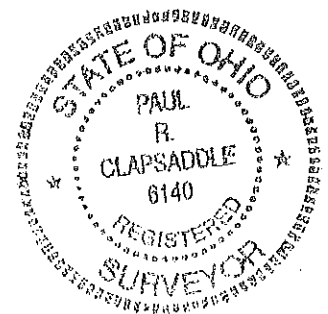
Of the above described 78.546 acre tract, 0.171 acre is part of said 31.25 acre tract, 27.742 acres are part of said 62.50 acre tract, and 50.633 acres are part of said 173.63 acre tract

Of the above described 78.546 acre tract, 27.913 acres are in V.M.S. 4731 and 50.633 acres are in V.M.S. 5436;

The above description was prepared from a field survey made under the supervision of Paul R. Clapsaddle, Registered Surveyor #6140 during the month of December 2011. Iron pins set are 5/8 inch by 30 inch reinforcing rods with caps marked "CLAPSADDLE RS 6140." Bearings indicated herein are based on an assumed meridian and are to denote angles only.

ATTEST:


Paul R. Clapsaddle, RS #6140
19019 West Darby Road
Marysville, Ohio 43040
(937) 747-2599



SURVEY FOR STANLEY FORREST

187.124 Acres

February 8, 2012

The following described 187.124 acre tract of land is situated in the State of Ohio, County of Champaign, Township of Goshen, County of Madison, Township of Somerford, V.M.S. 4731, V.M.S. 5436, V.M.S. 5435, V.M.S. 8041, and V.M.S. 5478, being part of Margaret L. Forrest, Trustee's (1/2 interest) 31.25 acre Tract 2, 62.50 acre Tract 2, and part of her original 173.63 acre Tract 3 described in Champaign County Official Record 441, page 1843 and described in Madison County Official Record 201, page 2265, and being part of Stanley L. Forrest, Trustee's (1/2 interest) 31.25 acre Tract 2, 62.50 acre Tract 2 and part of his original 173.63 acre Tract 3 described in Champaign County Official Record 441, page 1850 and described in Madison County Official Record 201, page 2272, and said 187.124 acre tract being more particularly described as follows:

Beginning for reference at a 5/8 inch iron pin found with cap marked "ODOT SURVEY PT" inside a monument box on the centerline of State Route 187 (60 feet wide), said iron pin being in the east line of Champaign County and Goshen Township and in the west line of Madison County and Somerford Township;

Thence North 45°00'00" West (assumed bearing) 381.77 feet, entering Champaign County, Goshen Township, and following the centerline of State Route 187, to a magnetic spike set at the west corner of Kevin O. and Tina M. Campbell's 1.5850 acre Tract II described in Champaign County Official Record 101, page 764 and Madison County Official Record 292, page 887 (said 1.5850 acre tract formerly part of said original 173.63 acre tract), said magnetic spike marking the **place of beginning**;

Thence North 45°00'00" West 1012.07 feet, following the centerline of State Route 187, departing from said original 173.63 acre tract and V.M.S. 5436 and entering said 62.50 acre tract and V.M.S. 4731, to a 5/8 inch iron pin found with cap marked "ODOT SURVEY PT." at an angle point in the centerline of State Route 187;

Thence North 45°31'00" West 938.77 feet, following the centerline of State Route 187, to a magnetic spike set at a Point of Curvature;

Thence following the centerline of State Route 187 **along a curve to the left for 144.70 feet, said curve having a radius of 154.85 feet, a delta of 53°32'19" and a Chord bearing North 72°17'09" West 139.49 feet**, to a magnetic spike set in a south line of said 31.25 acre tract and in a north line of said 62.50 acre tract;

Thence South 80°56'41" West 233.22 feet, following the centerline of State Route 187, a south line of said 31.25 acre tract, and a north line of said 62.50 acre tract, to a magnetic spike found;

Thence following the centerline of State Route 187 and entering said 31.25 acre tract, **following a curve to the right for 286.29 feet, said curve having a radius of 243.81 feet, a delta of 67°16'40", and a chord bearing North 65°24'59" West 270.12 feet**, to a magnetic spike set in a southwest line of said 31.25 acre tract;

Thence North 31°46'39" West 62.98 feet, following the centerline of State Route 187 and a southwest line of said 31.25 acre tract, to a magnetic spike set;

Thence **North 25°12'31" West 194.38 feet**, departing from the centerline of State Route 187, and following a southwest line of said 31.25 acre tract to a ¼ inch iron pipe found in a southeast line of the Blazer Family Limited Partnership's 101.097 acre Tract VII described in Champaign County Official Record 451, page 2432, also described as their 101.097 acre Parcel II in Madison County Official Record 215, page 416;

Thence **North 56°06'32" East 2161.84 feet**, following a northwest line of said 31.25 acre tract, a southeast line of said 101.097 acre tract, and generally following the approximate center of a ditch, to a 5/8 inch iron pin set in the northeast line of V.M.S. 4731 and in the southwest line of V.M.S. 5435;

Thence **South 26°00'55" East 377.12 feet**, following a northeast line of said 31.25 acre tract and V.M.S. 4731 and following a southwest line of said 101.097 acre tract and V.M.S. 5435, to an iron pin set at a west corner of said 173.63 acre tract;

Thence **North 64°59'05" East 1245.78 feet**, entering V.M.S. 5435, following a north line of said 173.63 acre tract and a south line of said 101.097 acre tract, passing at 783.95 feet the east line of Champaign County and Goshen Township and the west line of Madison County and Somerford Township, to an iron pin set in the west line of Clair Zimmerman's 190.05 acre tract described in Madison County Deed Record 157, page 175;

Thence **South 10°45'26" East 595.88 feet**, following an east line of said 173.63 acre tract and the west line of said 190.05 acre tract, to an iron pin set;

Thence **South 86°04'28" East 1020.78 feet**, following a north line of said 173.63 acre tract and a south line of said 190.05 acre tract, passing at 996.40 feet a 1 ¼ inch iron pipe found, to a magnetic spike set in the centerline of Lewis Road (C.H. 117, 50 feet wide);

Thence **South 06°15'36" East 799.92 feet**, following the centerline of Lewis Road and an east line of said 173.63 acre tract, passing the south line of V.M.S. 5435 and entering V.M.S. 8041, to a railroad spike found in the northwest line of Clair Zimmerman (1/2 interest) et al's (1/2 interest) 112 acre tract described in Madison County Official Record 297, page 350;

Thence **South 65°05'30" West 67.30 feet**, departing from the centerline of Lewis Road, following a southeast line of said 173.63 acre tract and a northwest line of said 112 acre tract, to an iron pin set;

Thence **South 36°26'06" East 478.78 feet**, following a northeast line of said 173.63 acre tract and a southwest line of said 112 acre tract, passing at 126.86 feet a railroad spike found in the centerline of Lewis Road, thereafter following the centerline of Lewis Road and departing from V.M.S. 8041 and entering V.M.S. 5478, to a magnetic nail found at the north corner of Phelps Preferred Investments, LLC's 113.682 acre tract described in Madison County Official Record 239, page 220;

Thence **South 52°35'16" West 2311.11 feet**, departing from the centerline of Lewis Road, following a southeast line of said 173.63 acre tract and a northwest line of said 113.682 acre tract, crossing the northwest line of V.M.S. 5478 and the southeast line of V.M.S. 8041, also crossing the west line of V.M.S. 8041 and entering V.M.S. 5436, passing a 1 ¼ inch iron pipe found, to a ¾ inch iron pipe found at an east corner of said 1.5850 acre tract;

Thence **North 44°43'32" West 520.71 feet**, following a southwest line of said 173.63 acre tract and the northeast line of said 1.5850 acre tract, passing the west line of Madison County and Somerford Township and entering Champaign County and Goshen Township, to a 5/8 inch iron pin found;

Thence **South 45°04'06" West 306.12 feet**, following the northwest line of said 1.5850 acre tract and a southeast line of said 173.63 acre tract, passing at 281.91 feet a ¼ inch iron pipe found, to the **place of beginning, containing 187.124 acres**, more or less, and being subject to all valid easements and restrictions of record.

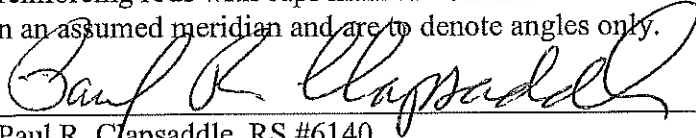
Of the above described 187.124 acre tract, 91.595 acres are in Madison County and Somerford Township and 95.528 acres are in Champaign County and Goshen Township.

Of the above described 95.528 acres in Champaign County, 30.018 acres are part of said 31.25 acre tract, 37.257 acres are part of said 62.50 acre tract, and 28.253 acres are part of said 173.63 acre tract. Of the above 95.528 acres in Champaign County 67.276 acres are in V.M.S. 4731, 16.492 acres are in V.M.S. 5436, and 11.760 acres are in V.M.S. 5435.

Of the above described 91.595 acres in Madison County, 0.183 acres are part of said 62.50 acre tract and 91.412 acres are part of said 173.63 acre tract. Also of the above described 91.595 acre tract, 0.183 acre is in V.M.S. 4731, 24.623 acres are in V.M.S. 5436, 38.495 acres are in V.M.S. 5435, 27.386 acres are in V.M.S. 8041, and 0.908 acre is in V.M.S. 5478;

The above description was prepared from a field survey made under the supervision of Paul R. Clapsaddle, Registered Surveyor #6140 during the month of December 2011. Iron pins set are 5/8 inch by 30 inch reinforcing rods with caps marked "CLAPSADDLE RS 6140." Bearings indicated herein are based on an assumed meridian and are to denote angles only.

ATTEST:


Paul R. Clapsaddle, RS #6140
19019 West Darby Road
Marysville, Ohio 43040
(937) 747-2599

