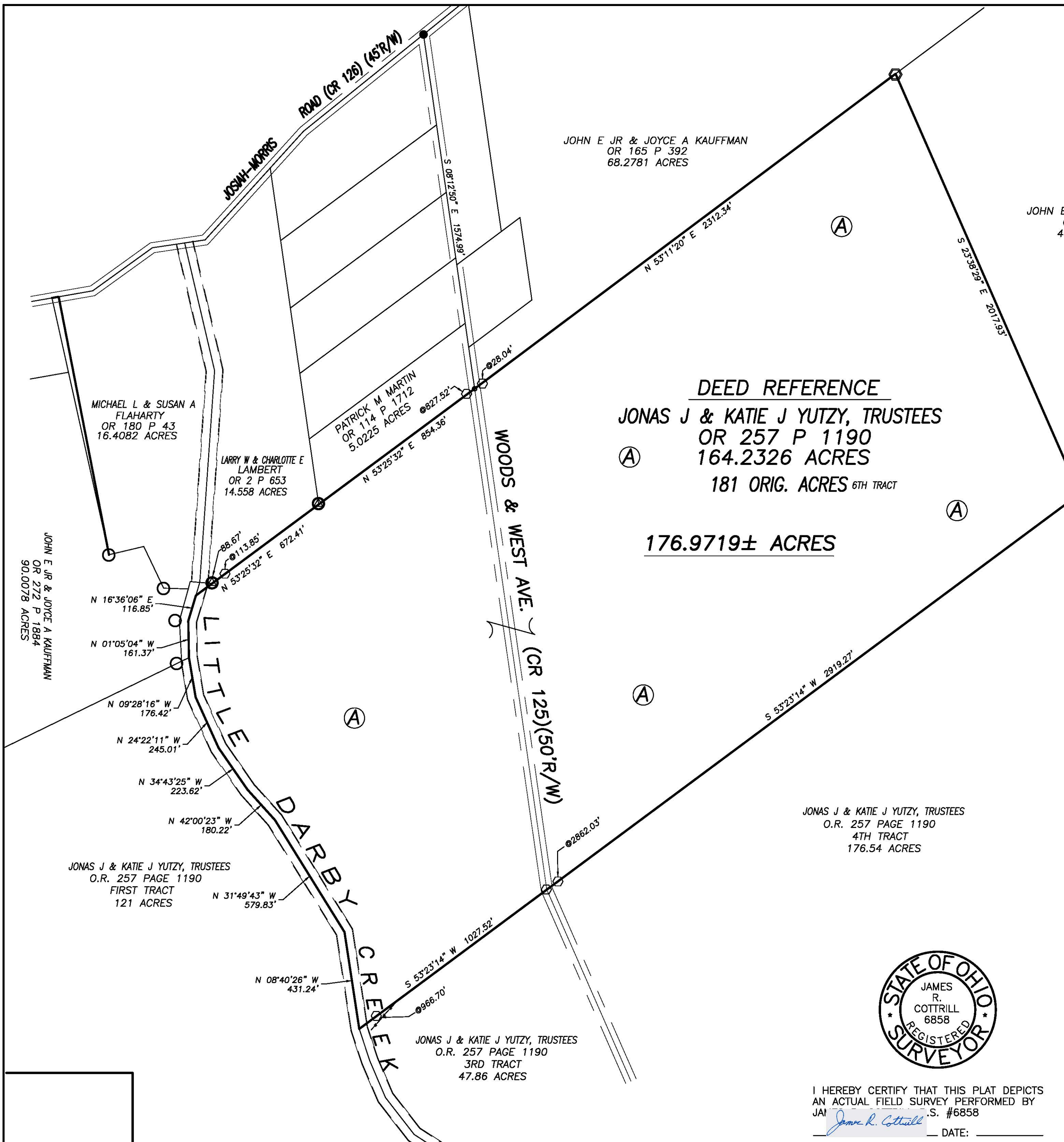
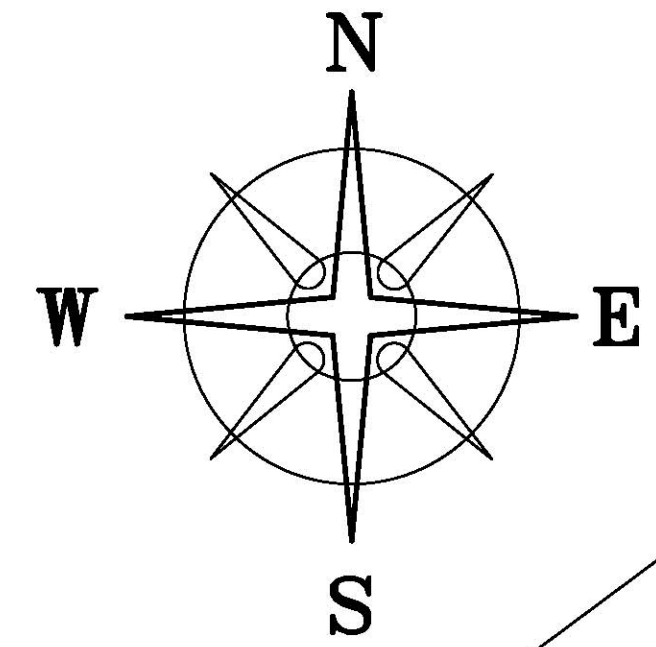


BEARINGS BASED ON A GPS OBSERVATION ON 6/04/12
WGS 1984 GEODETIC NORTH



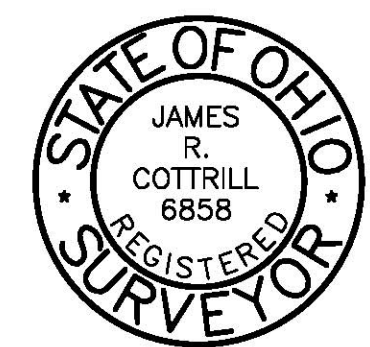
DEED REFERENCE
JONAS J & KATIE J YUTZY, TRUSTEES
OR 257 P 1190
164.2326 ACRES
181 ORIG. ACRES 6TH TRACT

176.9719± ACRES

JOHN E & LEONA KRAMER
 DB 241 P 92
 50 ACRES

LEGEND

- ⊙ 12" WOOD FENCE POST (FOUND)
 - 3/4" IRON PIPE & YELLOW PLASTIC CAP "R.E.T. 6552" (FOUND)
 - 12" SQ. CONCRETE FENCE POST (FOUND)
 - IRON PIN (FOUND)
 - MAG NAIL (FOUND)
 - ⬡ 5/8" # REBAR & YELLOW PLASTIC CAP STAMPED "COTTRILL 6858" (SET)
 - ⬢ 5/8" # REBAR & YELLOW PLASTIC CAP STAMPED "COTTRILL 6858" (PREVIOUSLY SET)
- ALL MONUMENTS FOUND OR SET ARE IN GOOD CONDITION UNLESS OTHERWISE NOTED.



I HEREBY CERTIFY THAT THIS PLAT DEPICTS AN ACTUAL FIELD SURVEY PERFORMED BY JAI *James R. Cottrill* .S. #6858
 DATE: _____

COTTRILL SURVEYING, L.L.C.
 8256 S.R. 207 N.E. MT. STERLING, OHIO 43143 PH. (740) 869-3811

**176.9719± ACRES, VMS 2883,
 MONROE TOWNSHIP,
 MADISON COUNTY, STATE OF OHIO.
 SURVEYED FOR JONAS YUTZY**

DATE DRAWN: 6/5/12	SCALE : 1" = 300'	CREW: MW
JOB # S120506	300' 150' 0 300'	DWN. BY: MW, RC
F. B. #		CK. BY: _____

The following described 176.9619 acre tract is situated in the State of Ohio, Madison County, Monroe Township, VMS 2883, and being all of a 164.2326 acre tract (6th Tract) conveyed to Jonas J. and Katie J. Yutzy, Trustees by Official Record 257 page 1190, and being more particularly described as follows:

Beginning at a mag nail set in the centerline of Woods and West Ave. (County Road 125)(50 ft. right-of-way) said mag nail is at the southeast corner of a 5.0225 acre tract conveyed to Patrick M. Martin by Official Record 114 page 1712, said nail also is at the southwest corner of a 68.2781 acre tract conveyed to John E. Jr. and Joyce A. Kaufman by Official Record 165 page 392, said mag nail also bears South 08° 12 minutes 50 seconds East a distance of 1574.99 ft. from an iron pin found at the centerline intersection of said Woods and West Ave. with the centerline of Josiah-Morris Road (County Road 126)(45 ft. right-of-way);

Thence, with the southeast line of said 68.2781 acre tract, **North 53° 11 minutes 20 seconds East**, passing an iron pin and cap set at 28.04 ft., a total distance of **2312.34 ft.** to an iron pin and cap previously set at the northwest corner of a 40.9455 acre tract conveyed to John E. and Leona Kramer by Official Record 13 page 134;

Thence, with the southwest line of said 40.9455 acre tract **South 23° 38 minutes 29 seconds East** a distance of **2017.93 ft.** to a 12 in. square concrete fence post found at the westernmost corner of a 50 acre tract conveyed to John E. and Leona Kramer by Deed Book 241 page 92, said post is also at the northernmost corner of a 176.54 acre tract conveyed to Jonas J. and Katie J. Yutzy, Trustees by Official Record 257 page 1190;

Thence, with the northwest line of said 176.54 acre tract **South 53° 23 minutes 14 seconds West**, passing an iron pin and cap set at 2862.03 ft., a total distance of **2919.27 ft.** to an iron pin and cap set at an angle point in the centerline of said Woods and West Ave. at the northernmost corner of a 47.86 acre tract conveyed to Jonas J. and Katie J. Yutzy, Trustees by Official Record 257 page 1190;

Thence, with the northwest line of said 47.86 acre tract **South 53° 23 minutes 14 seconds West**, passing an iron pin and cap set at 966.70 ft., a total distance of **1027.52 ft.** to a point in the centerline of Little Darby Creek;

Thence, with the centerline of said Little Darby Creek the following 8 courses:

- 1) **North 08° 40 minutes 26 seconds West** a distance of **431.24 ft.**
- 2) **North 31° 49 minutes 43 seconds West** a distance of **579.83 ft.**
- 3) **North 42° 00 minutes 23 seconds West** a distance of **180.22 ft.**
- 4) **North 34° 43 minutes 25 seconds West** a distance of **223.62 ft.**
- 5) **North 24° 22 minutes 11 seconds West** a distance of **245.01 ft.**
- 6) **North 09° 28 minutes 16 seconds West** a distance of **176.42 ft.**
- 7) **North 01° 05 minutes 04 seconds West** a distance of **161.37 ft.**
- 8) **North 16° 36 minutes 06 seconds East** a distance of **116.85 ft.**;

Thence, with the northwest line of said 164.2326 acre tract, **North 53° 25 minutes 32 seconds East**, passing a 12 in. wood fence post found corner to a 14.558 acre tract conveyed to Larry W. and Charlotte E. Lambert by Official Record 2 page 653 at 88.67 ft., also passing an iron pin and cap set at 113.85 ft., a total distance of **672.41 ft.** to a 12 in. diameter wood fence post found at the southwest corner of said Martin's 5.0225 acre tract;

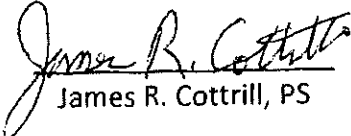
Thence, with the southeast line of said 5.0225 acre tract, **North 53° 25 minutes 32 seconds East**, passing an iron pin and cap set at 827.52 ft., a total distance of **854.36 ft.** returning to the point beginning containing **176.9719 Acres** more or less.

Bearings are based on a GPS observation on June 4, 2012, WGS 1984 Geodetic North.

This deed is subject to and with the benefit of all legal highways, restrictions, easements, limitations, and reservations, of record, if any and to zoning restrictions which have been imposed thereon, if any.

All iron pins set are 5/8 inch diameter rebar with yellow plastic caps stamped "Cottrill L.L.C. 6858."

This description is based on a field survey performed June 4, 2012 by James R. Cottrill registration #6858. (Job #S120506-176.9719AC)


James R. Cottrill, PS

