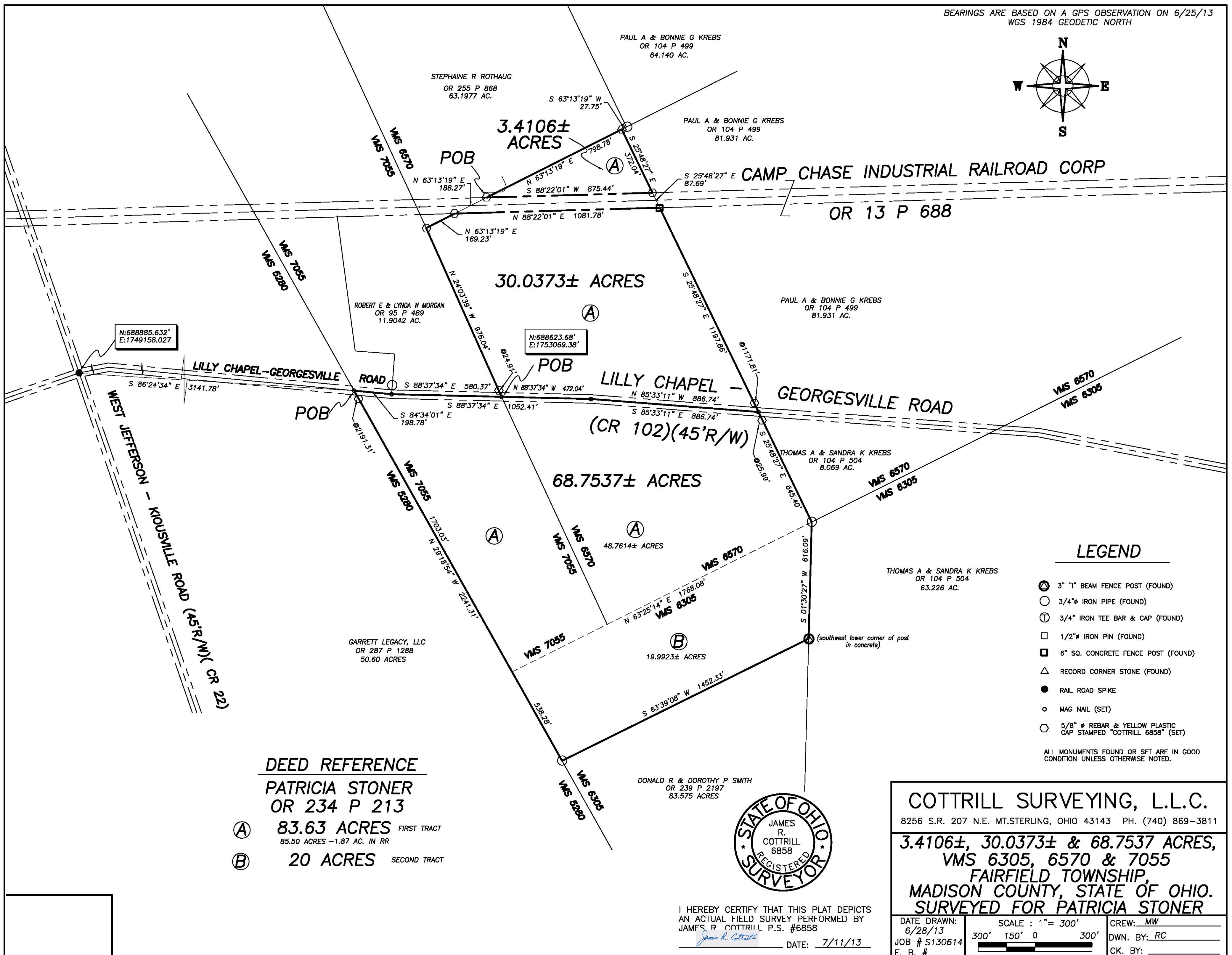
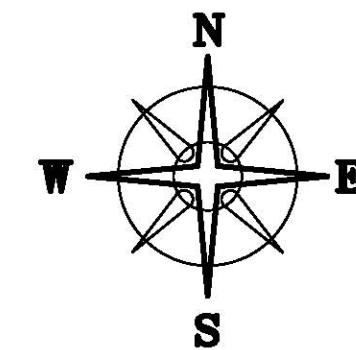


BEARINGS ARE BASED ON A GPS OBSERVATION ON 6/25/13
WGS 1984 GEODETIC NORTH



3.4106 Acre Tract
Surveyed for Patricia Stoner Estate

The following describe 3.4106 acre tract is situated in the State of Ohio, Madison County, Fairfield Township, VMS 6570, and being part of an 83.63 acre tract (first tract) conveyed to Patricia Stoner by Official Record 234 page 213, and being more particularly described as follows:

Beginning at an iron pin and cap set in the north right-of-way line of Camp Chase Industrial Railroad Corporation by Official Record 13 page 688, corner to said 83.63 acre tract, also corner to a 63.1977 acre tract conveyed to Stephaine R. Rothhaug by Official Record 255 page 868, from said iron pin and cap a railroad spike found at the centerline intersection of Lilly Chapel-Georgesville Road (County Road 102)(45 feet right-of-way) with the centerline of the West Jefferson-Kiousville Road (County Road 22)(45 feet right-of-way) bears the following five courses:

- 1) South 86° 24' 34" East a distance of 3141.78 feet to a mag nail set
- 2) South 84° 34' 01" East a distance of 198.78 feet to a mag nail set
- 3) South 88° 37' 34" East a distance of 580.37 feet to a mag nail set
- 4) North 24° 03' 39" West, passing an iron pin and cap set at 24.91 feet, a total distance of 976.04 feet to an iron pin and cap set
- 5) North 63° 13' 19" East, passing an iron pin and cap set in the south right-of-way line of said railroad at 169.23 feet, a total distance of 357.50 feet;

Thence, with the south line of said 63.1977 acre tract, **North 63° 13' 19" East** a distance of **798.78 feet** to an iron pin and cap set at the northwest corner of an 81.931 acre tract conveyed to Paul A. and Bonnie G Krebs by Official Record 104 page 499;

Thence, with the west line of said 81.931 acre tract, **South 25° 48' 27" East** a distance of **372.04 feet** to an iron pin and cap set in the north line of said railroad;

Thence, with the north line of said railroad, **South 88° 22' 01" West** a distance of **875.44 feet** returning to the point of beginning containing **3.4106 Acres** more or less.

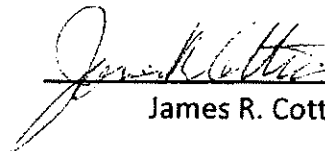
Bearings are bases on a GPS observation on June 25, 2013, WGS 1984 Geodetic North.

This deed is subject to and with the benefit of all legal highways, restrictions, easements, limitations, and reservations, of record, if any and to zoning restrictions which have been imposed thereon, if any.

All iron pins set are 5/8 inch diameter rebar with yellow plastic caps stamped "Cottrill L.L.C. 6858."

This description is based on a field survey performed July 18, 2013 by James R. Cottrill registration #6858. (Job #S130614-3-4106AC)




James R. Cottrill, PS

30.0373 Acre Tract
Surveyed for Patricia Stoner Estate

The following describe 30.0373 acre tract is situated in the State of Ohio, Madison County, Fairfield Township, VMS 6570, and being part of an 83.63 acre tract (first tract) conveyed to Patricia Stoner by Official Record 234 page 213, and being more particularly described as follows:

Beginning at a mag nail set in the centerline intersection of Lilly Chapel-Georgesville Road (County Road 102)(45 feet right-of-way), corner to said 83.63 acre tract, also corner to a 11.9042 acre tract conveyed to Robert E and Lynda W Morgan by Official Record 95 page 489, from said mag nail a railroad spike found at the centerline intersection of said Lilly Chapel-Georgesville Road with the centerline of the West Jefferson-Kiousville Road (County Road 22)(45 feet right-of-way) bears the following 3 courses:

- 1) South 86° 24' 34" East a distance of 3141.78 feet to a mag nail set
- 2) South 84° 34' 01" East a distance of 198.78 feet to a mag nail set
- 3) South 88° 37' 34" East a distance of 580.37 feet to a mag nail set;

Thence, with the east line of said 11.9042 acre tract, **North 24° 03' 39" West**, passing an iron pin and cap set at 24.91 feet, a total distance of **976.04 feet** to an iron pin and cap set at the southwest corner of a 63.1977 acre tract conveyed to Stephanie R. Rothaug by Official Record 255 page 868;

Thence, with the south line of said 63.1977 acre tract, **North 63° 13' 19" East** a distance of **169.23 feet** to an iron pin and cap set in the south line of the railroad conveyed to the Camp Chase Industrial Railroad Corporation by Official Record 13 page 688;

Thence, with the south line of said railroad, **North 88° 22' 01" East** a distance of **1081.78 feet** to an iron pin and set in the west line of an 81.931 acre tract conveyed to Paul A. and Bonnie G Krebs by Official Record 104 page 499;

Thence, with the west line of said 81.931 acre tract, **South 25° 48' 27" East**, passing an iron pin and cap set at 1171.81 feet, a total distance of **1197.86 feet** to a mag nail set in the centerline of said Lilly Chapel-Georgesville Road;

Thence, with the centerline of said Lilly Chapel-Georgesville Road, the following two courses:

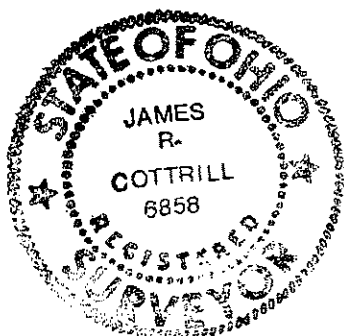
- 1) **North 85° 33 min. 11 seconds West** a distance of **886.74 feet** to a mag nail set
- 2) **North 88° 37 min. 34 seconds West** a distance of **472.04 feet** returning to the point of beginning containing **30.0373 Acres** more or less.

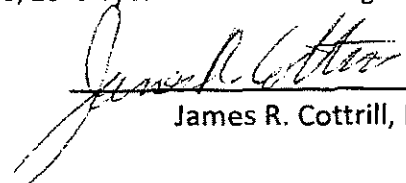
Bearings are bases on a GPS observation on June 25, 2013, WGS 1984 Geodetic North.

This deed is subject to and with the benefit of all legal highways, restrictions, easements, limitations, and reservations, of record, if any and to zoning restrictions which have been imposed thereon, if any.

All iron pins set are 5/8 inch diameter rebar with yellow plastic caps stamped "Cottrill L.L.C. 6858."

This description is based on a field survey performed July 18, 2013 by James R. Cottrill registration #6858. (Job #S130614-30-0373AC)




James R. Cottrill, PS

68.7537 Acre Tract
Surveyed for Patricia Stoner Estate

The following describe 68.7537 acre tract is situated in the State of Ohio, Madison County, Fairfield Township, VMS 6305, 6570, and 7055, and being part of an 83.63 acre tract (first tract) and all of a 20 acre tract (second tract) both tracts conveyed to Patricia Stoner by Official Record 234 page 213, and being more particularly described as follows:

Beginning at a mag nail set in the centerline intersection of Lilly Chapel-Georgesville Road (County Road 102)(45 feet right-of-way), corner to said 83.63 acre tract, also corner to a 50.60 acre tract conveyed to Garrett Legacy, LLC by Official Record 287 page 1288, said mag nail is in the line between VMS 75055 and 5280, from said mag nail a railroad spike found at the centerline intersection of said Lilly Chapel-Georgesville Road with the centerline of the West Jefferson-Kiousville Road (County Road 22)(45 feet right-of-way) bears South 86° 24' 34" East a distance of 3141.78 feet;

Thence, with the centerline of said Lilly Chapel-Georgesville Road, the following three courses:

- 1) **South 84° 34' 01" East** a distance of **198.78 feet** to a mag nail set
- 2) **South 88° 37' 34" East**, passing a mag nail set in the line between VMS 6570 and 7055 at 580.37 feet, a total distance of **1052.41 feet** to a mag nail set
- 3) **South 85° 33' 11" East** a distance of **886.74 feet** to a mag nail set at the northwest corner of an 8.069 acre tract conveyed to Thomas A and Sandra K Krebs by Official Record 104 page 504;

Thence, with the west line of said 8.069 acre tract, **South 25° 48' 27" East**, passing an iron pin and cap set at 25.99 feet, a total distance of **645.40 feet** to a 3/4 inch diameter iron pipe found at the northwest corner of a 63.226 acre tract conveyed to Thomas A and Sandra K Krebs by Official Record 104 page 504;

Thence, with the west line of said 63.226 acre tract, **South 01° 30' 27" West** a distance of **616.09 feet** to a 3 inch metal "I" beam found at the northeast corner of an 83.575 acre tract conveyed to Donald R and Dorothy T Smith by Official Record 239 page 2197;

Thence, with the north line of said 83.575 acre tract, **South 63° 39' 08" West** a distance of **1452.33 feet** to a 3/4 iron pipe found in the east line of said 50.60 acre tract;

Thence, with the east line of said 50.60 acre tract, **North 29° 18 min. 54 seconds West**, passing the west corner common to said 20 and 83.63 acre tracts at 538.28 feet, also passing an iron pin and cap set at 2191.31 feet, a total distance of **2241.31 feet** returning to the point of beginning containing **68.7537 Acres** more or less, of which 48.7614 acres more or less is part of said 83.63 acre tract and 19.9923 acres more or less is all of said 20 acre tract.

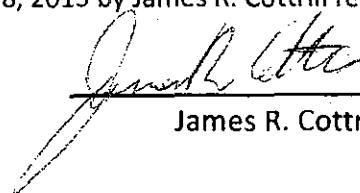
Bearings are bases on a GPS observation on June 25, 2013, WGS 1984 Geodetic North.

This deed is subject to and with the benefit of all legal highways, restrictions, easements, limitations, and reservations, of record, if any and to zoning restrictions which have been imposed thereon, if any.

All iron pins set are 5/8 inch diameter rebar with yellow plastic caps stamped "Cottrill L.L.C. 6858."

This description is based on a field survey performed July 18, 2013 by James R. Cottrill registration #6858. (Job #S130614-68-7537AC)




James R. Cottrill, PS