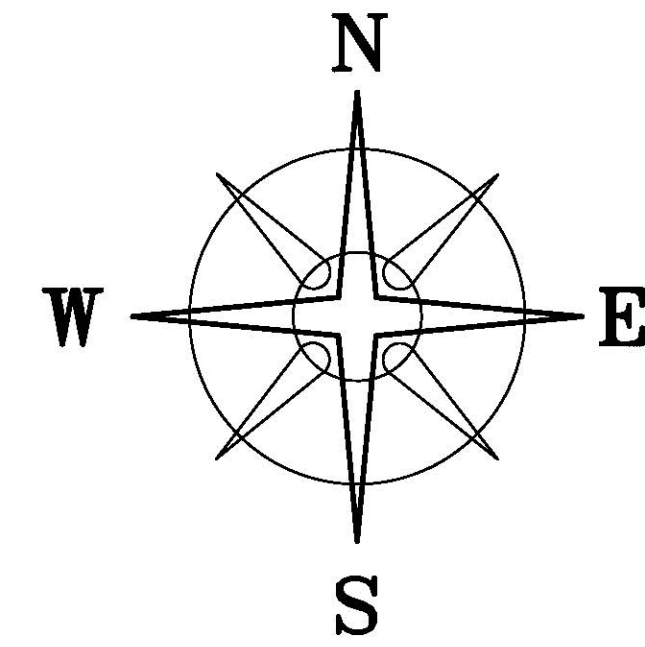


BEARINGS BASED ON A GPS OBSERVATION ON 2/15/12
WGS 1984 GEODETIC NORTH



PREMIRE FARM PROPERTIES LLC
O.R. 255 PAGE 287
495.38 ACRES

PAINT TOWNSHIP
STOKES TOWNSHIP

ESJ VALLERY FARMS, INC
DB 253 P 707
261 ACRES

MICHAEL E. & CHRISTA
HACKWORTH
OR 78 P 803
15.6 AC.

JAMES C. MITCHELL ETAL.
O.R. 220 PAGE 837
152.03 ACRES (PARCEL 1)

DEED REFERENCE
ALLENA DANIELS
OFFICIAL RECORD 250 PAGE 35
Ⓐ 15.6 ACRES

LEGEND

- Ⓐ WOOD FENCE POST (FOUND)
- 1" IRON PIPE (FOUND)
- ⊕ 3/4" IRON TEE BAR & CAP (FOUND)
- 1/2" IRON PIN (FOUND)
- 12" SQ. CONCRETE FENCE POST (FOUND)
- △ RECORD CORNER STONE (FOUND)
- RAIL ROAD SPIKE (FOUND)
- ▲ MINE SPIKE (FOUND)
- MAG NAIL (SET)
- 5/8" # REBAR & YELLOW PLASTIC CAP STAMPED "COTTRILL 6858" (SET)

ALL MONUMENTS FOUND OR SET ARE IN GOOD
CONDITION UNLESS OTHERWISE NOTED.



I HEREBY CERTIFY THAT THIS PLAT DEPICTS
AN ACTUAL FIELD SURVEY PERFORMED BY
JAMES R. COTTRILL P.S. #6858

James R. Cottrill DATE: _____

COTTRILL SURVEYING, L.L.C.

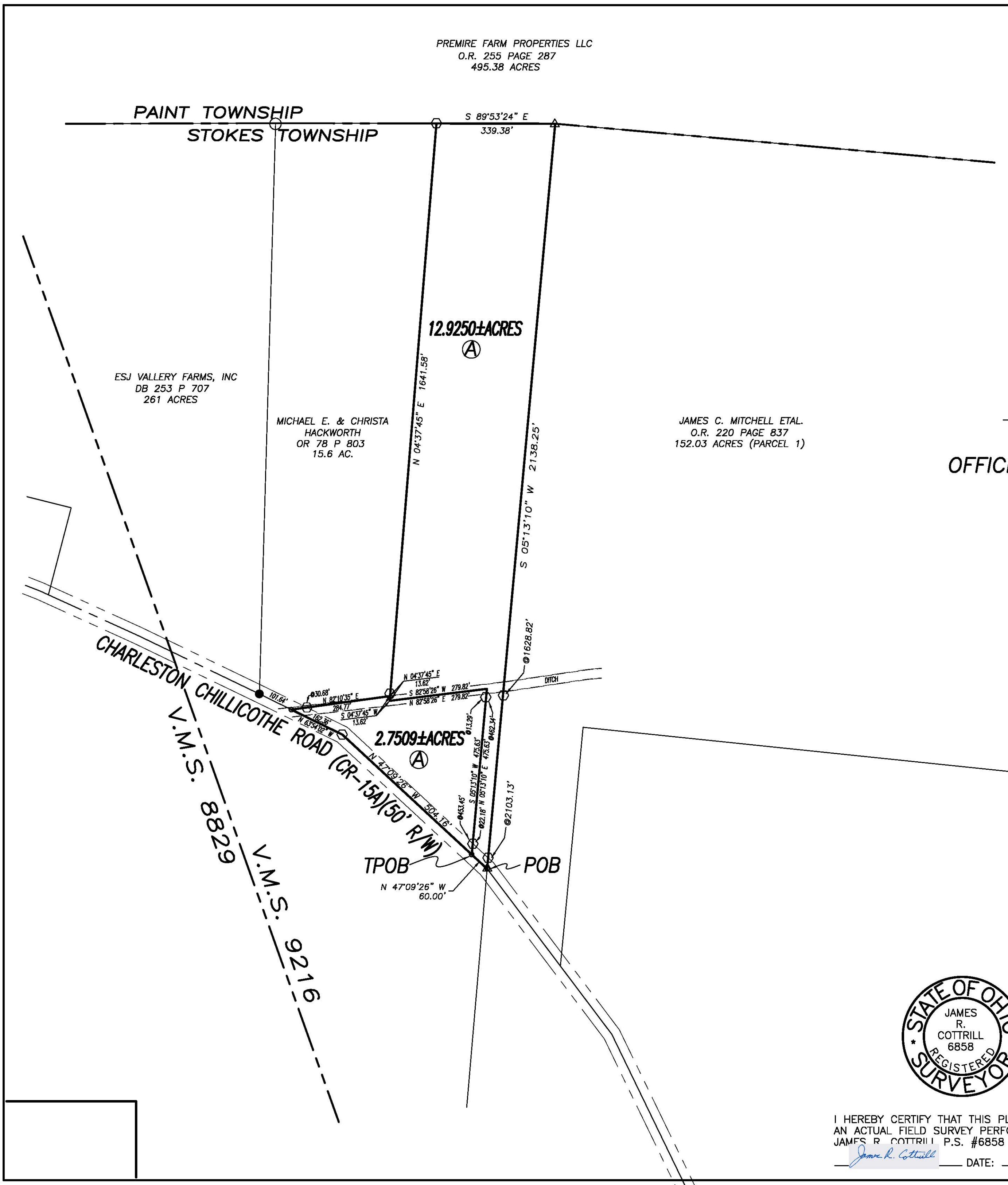
8256 S.R. 207 N.E. MT. STERLING, OHIO 43143 PH. (740) 869-3811

**2.7509± & 12.9250± ACRES, VMS 9216,
STOKES TOWNSHIP,
MADISON COUNTY, OHIO.
SURVEYED FOR ALLENA DANIELS**

DATE DRAWN:
2/8/12
JOB # S120205
F. B. #

SCALE : 1" = 200'
200' 100' 0 200'

CREW: MW
DWN. BY: MW
CK. BY: _____



2.7509 Acre Tract
Surveyed for Allena Daniels

The following described 2.7509 acre tract is situated in the State of Ohio, Madison County, Stokes Township, VMS 9216, and being part of a 15.6 acre tract conveyed to Allena Daniels by Official Record 250 page 35, and being more particularly described as follows:

Commencing at a mine spike found in the centerline of Charleston-Chillicothe Road (County Road 15A)(50 ft. right-of-way), said spike is at the southeast corner of said 15.6 acre tract and the southwest corner of a 152.03 acre tract conveyed to James C. Mitchell Et al by Official Record to 20 page 837;

Thence, with the centerline of said Charlestown-Chillicothe Road, North 47° 09 minutes 26 seconds West a distance of 60.00 ft. to a mag nail set at a **The True Point Beginning**;

Thence, continuing with the centerline of said Charlestown-Chillicothe Road, the following 2 courses:

- 1) North 47° 09 minutes 26 seconds West a distance of 504.16 ft. to an iron pin and cap set
- 2) North 63° 54 minutes 02 seconds West a distance of 162.36 ft. to a mag nail set at the southwest corner of said 15.6 acre tract and corner to a 15.6 acre tract conveyed to Michael E. and Christa Hackworth by Official Record 78 page 803;

Thence, with the south line of said Hackworth's 15.6 acre tract, North 82° 10 minutes 35 seconds East, passing an iron pin and cap set at 30.68 ft., a total distance of 284.77 ft. to an iron pin and cap set at the southeast corner of said Hackworth's 15.6 acre tract;

Thence, across said 15.6 acre tract the following three new courses:

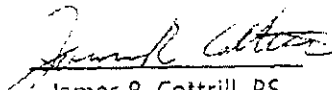
- 1) South 04° 37 minutes 45 seconds West a distance of 13.62 ft. to a point in the centerline of the small ditch
- 2) North 82° 58 minutes 26 seconds East, with said small ditch, a distance of 279.82 ft.
- 3) South 05° 13 minutes 10 seconds West, passing iron pin and caps at 13.29 ft. and 453.45 ft., a total distance of 475.63 ft. returning to **The True Point Beginning** containing 2.7509 Acres more or less.

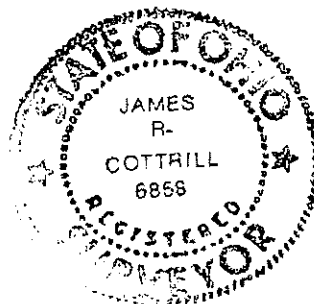
Bearings are based on a GPS observation on February 15, 2012, WGS 1984 Geodetic North.

This deed is subject to and with the benefit of all legal highways, restrictions, easements, limitations, and reservations, of record, if any and to zoning restrictions which have been imposed thereon, if any.

All iron pins set are 5/8 inch diameter rebar with yellow plastic caps stamped "Cottrill L.L.C. 6858."

This description is based on a field survey performed February 15, 2012 by James R. Cottrill registration #6858. (Job #S120205-2.7509AC)


James R. Cottrill, PS



12.9250 Acre Tract
Surveyed for Allena Daniels

The following described 12.9250 acre tract is situated in the State of Ohio, Madison County, Stokes Township, VMS 9216, and being part of a 15.6 acre tract conveyed to Allena Daniels by Official Record 250 page 35, and being more particularly described as follows:

Beginning at a mine spike found in the centerline of Charleston-Chillicothe Road (County Road 15A)(50 ft. right-of-way), said spike is at the southeast corner of said 15.6 acre tract and the southwest corner of a 152.03 acre tract conveyed to James C. Mitchell Et al by Official Record to 20 page 837;

Thence, with the centerline of said Charlestown-Chillicothe Road, North 47° 09 minutes 26 seconds West a distance of 60.00 ft. to a mag nail set;

Thence, across said 15.6 acre tract the following 3 new courses:

- 1) North 05° 13 minutes 10 seconds East, passing iron pin and caps set at 22.18 ft. and 462.34 ft., a total distance of 475.63 ft. to a point in the centerline of the small ditch
- 2) South 82° 58 minutes 26 seconds West a distance of 279.82 ft. at to a point in said ditch
- 3) North 04° 37 minutes 45 seconds East a distance of 13.62 ft. to an iron pin and cap set at the southeast corner of a 15.6 acre tract conveyed to Michael E. and Christa Hackworth by Official Record 78 page 803

Thence, with the east line of said Hackworth's 15.6 acre tract, North 04° 37 minutes 45 seconds East a distance of 1641.58 ft. to an iron pin and cap set in the line between Paint and Stokes Townships and the south line of a 495.38 acre tract conveyed to Premire Farm Properties, LLC by Official Record 255 page 287;

Thence, with said Township line and the south line of said 495.38 acre tract, South 89° 53 minutes 24 seconds East a distance of 339.38 ft. to a cornerstone found at the north east corner of said 15.6 acre tract and the northwest corner of said 152.03 acre tract;

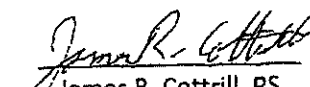
Thence, with the west line of said 152.03 acre tract, South 05° 13 minutes 10 seconds West, passing iron pin and caps set at 1628.82 ft. and 10 103.13 ft., a total distance a 2138.25 ft. returning to the point beginning containing 12.9250 Acres more or less.

Bearings are based on a GPS observation on February 15, 2012, WGS 1984 Geodetic North.

This deed is subject to and with the benefit of all legal highways, restrictions, easements, limitations, and reservations, of record, if any and to zoning restrictions which have been imposed thereon, if any.

All iron pins set are 5/8 inch diameter rebar with yellow plastic caps stamped "Cottrill L.L.C. 6858."

This description is based on a field survey performed February 15, 2012 by James R. Cottrill registration #6858. (Job #S120205-12.9250AC)


James R. Cottrill, PS

