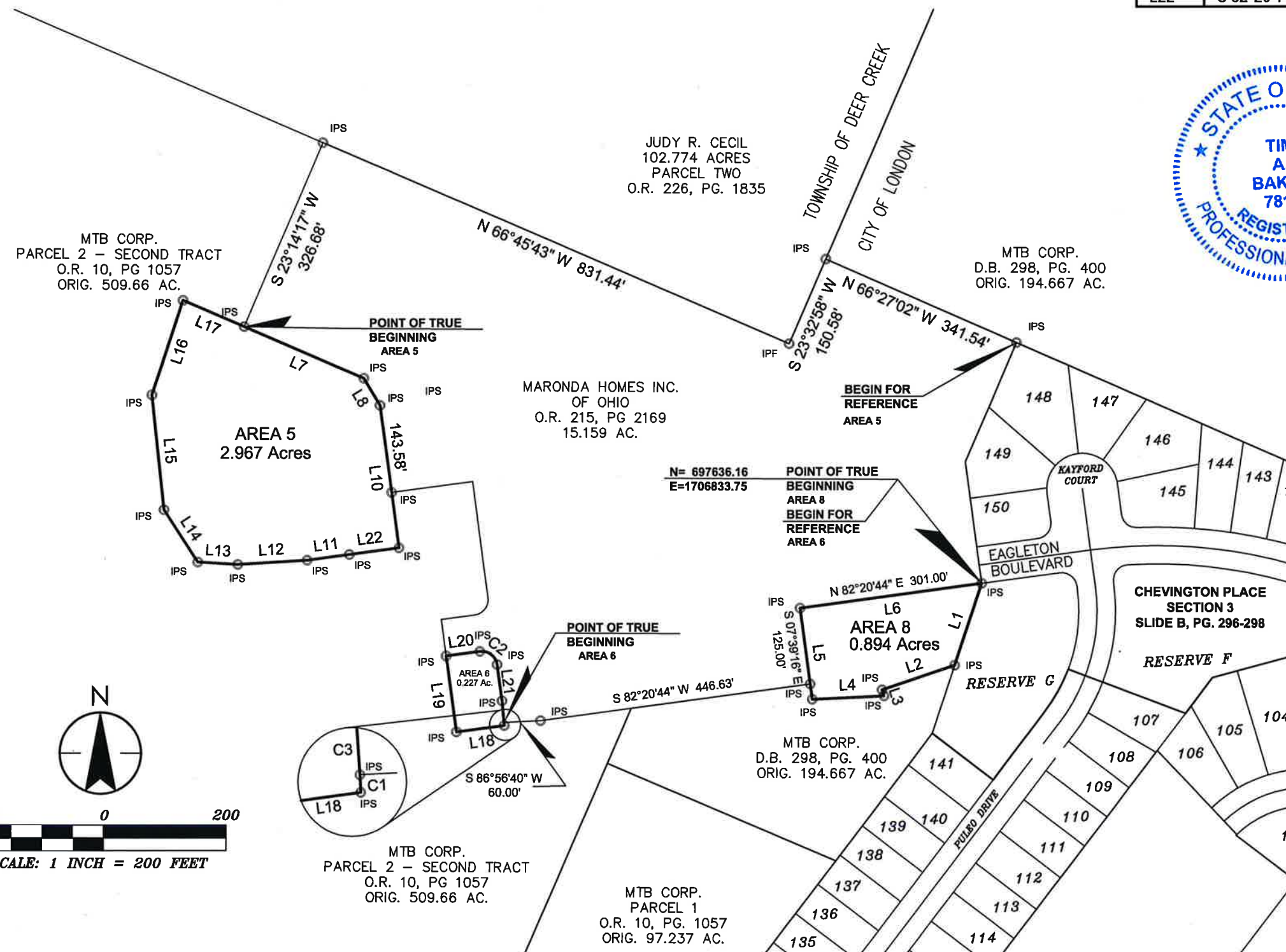
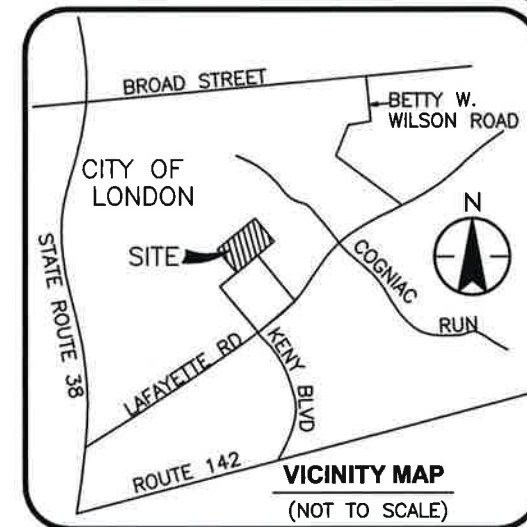


CURVE	DELTA ANGLE	RADIUS	ARC LENGTH	CHORD BEARING	CHORD LENGTH
C1	00°37'18"	445.00'	4.83'	S 02°44'41" E	4.83'
C2	90°00'00"	25.00'	39.27'	S 52°39'16" E	35.36'
C3	04°35'55"	445.00'	35.72'	S 05°21'18" E	35.71'

LINE	BEARING	DISTANCE
L1	S 18°17'00" W	140.74'
L2	S 71°37'09" W	126.09'
L3	S 18°22'51" E	10.59'
L4	S 87°25'14" W	117.99'
L5	N 07°39'16" W	150.00'
L6	N 82°20'44" E	301.00'
L7	S 66°45'43" E	213.24'
L8	S 30°25'24" E	51.37'
L10	S 07°39'16" E	234.70'
L11	S 82°22'22" W	69.66'

LINE	BEARING	DISTANCE
L12	S 86°26'11" W	113.66'
L13	N 86°26'19" W	65.42'
L14	N 33°03'33" W	101.77'
L15	N 05°57'18" W	188.47'
L16	N 18°12'53" E	162.40'
L17	S 66°45'43" E	108.62'
L18	S 82°20'44" W	78.37'
L19	N 07°39'16" W	125.00'
L20	N 82°20'44" E	55.22'
L21	S 07°39'16" E	59.51'
L22	S 82°20'44" W	81.66'



BASIS OF BEARINGS:
THE BEARINGS SHOWN HEREON ARE BASED ON THE GRID BEARING OF NORTH 37°22'00" EAST FOR THE OLD CENTERLINE OF LAFAYETTE ROAD AS DETERMINED BY A GPS NETWORK OF FIELD OBSERVATIONS PERFORMED IN MAY, 2000.

- LEGEND**
- IPS Iron Pipe Set, 3/4 inch, 30 inches in length, with a yellow cap stamped the name "STANTEC".
 - RBF Rebar Found
 - ☼ CGSS Cotton Gin Spindle Set
 - IPF Iron Pipe Found
 - MON Monument Box Found
 - ▲ RRSF Railroad Spike Found
 - CMF Concrete Right-of-way Monument Found
 - △ RRSS Railroad Spike Set
 - Stone Stone Found
 - PKNF PK Nail Found
 - PKNS PK Nail Set

SURVEY OF
2.967, 0.894, & 0.227 ACRES
LYING IN
SURVEY 5802
VIRGINIA MILITARY DISTRICT
CITY OF LONDON, MADISON COUNTY, OHIO

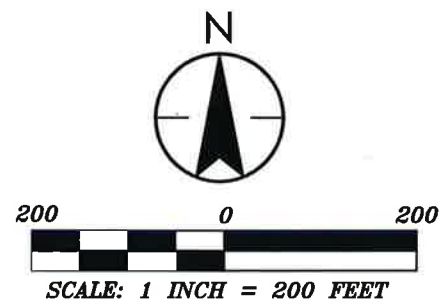
Tim Baker 3-14-17
TIM BAKER DATE
PROFESSIONAL SURVEYOR NO. S-7818

1500 LAKE SHORE DRIVE
SUITE 100
COLUMBUS, OHIO 43204
(614) 486-4383 1-800-340-2743
FAX (614) 486-4387



Copyright Reserved
The Contractor shall verify and be responsible for all dimensions. DO NOT scale the drawing - any errors or omissions shall be reported to Stantec without delay.
The Copyrights to all designs and drawings are the property of Stantec. Reproduction or use for any purposes other than that authorized by Stantec is forbidden.

V:\1734\active\Chevington\4193\survey\dwg\4193.MTB_SEC_4_SPLITS.dwg Layout1 Mar 14, 2017 - 9:28:39am t baker



**DESCRIPTION OF A
2.967 ACRE TRACT
(AREA 5)
CITY OF LONDON
MADISON COUNTY, OHIO**

Situated in the State of Ohio, Madison County, City of London, lying in Virginia Military Survey No. 5802, and lying on, over and across that original 509.66 acre tract (parcel 2 – second tract) as conveyed to MTB Corporation by deed of record in Official Record 10, Page 1057, Parcel No. 31-03399.001 (all records herein are from the Recorder's Office, Madison County, Ohio) and being more particularly described as follows:

Begin for reference at a 3/4 inch iron pipe set at the northerly corner of Lot 148 as numbered and delineated on the subdivision plat of "Chevington Place Section 3" of record in Slide B, Page 296 – 298, being a common corner to a 15.159 acre tract as conveyed to Maronda Homes Inc. of Ohio by deed of record in Official Record 215, Page 2169;

Thence North 66° 27' 02" West, a distance of 341.54 feet, along a northerly line of the said 15.159 acre tract to 3/4 inch iron pipe set on an easterly line of a 102.774 acre tract as conveyed to Judy R. Cecil by deed of record in Official Record 226, Page 1835;

Thence South 23° 32' 58" West, a distance of 150.58 feet, along a line common to the said 15.159 acre and 102.774 acre tracts to 3/4 inch iron pipe found at the common corner to said 15.159 acre and 102.774 acre tracts;

Thence North 66° 45' 43" West, a distance of 831.44 feet, along the line common to said 102.774 and 15.159 acre tracts to 3/4 inch iron pipe set at the northwesterly corner of the said 15.159 acre tract, being a corner with an original 509.66 acre tract;

Thence South 23° 14' 17" West, a distance of 326.68 feet, along the line common to said 509.66 and 15.159 acre tracts, to an iron pipe set at the **TRUE POINT OF BEGINNING**;

Thence the following two (2) courses and distances along the lines common to said original 509.66 and 15.159 acre tracts;

1. South 66° 45' 43" East, a distance of 213.24 feet, to an iron pipe set;
2. South 30° 25' 24" East, a distance of 51.37 feet, to an iron pipe set;

Thence South 07° 39' 16" East, a distance of 234.70 feet, continuing along the line common to said original 509.66 and 15.159 acre tract to an iron pipe set, passing a common corner at 143.58 feet;

Thence the following eight (8) courses and distances across said original 509.66 acre tract:

1. South 82° 20' 44" West, a distance of 81.66 feet, to an iron pipe set;
2. South 82° 22' 22" West, a distance of 69.66 feet, to an iron pipe set;
3. South 86° 26' 11" West, a distance of 113.66 feet, to an iron pipe set;
4. North 86° 26' 19" West, a distance of 65.42 feet, to an iron pipe set;
5. North 33° 03' 33" West, a distance of 101.77 feet, to an iron pipe set;
6. North 05° 57' 18" West, a distance of 188.47 feet, to an iron pipe set;
7. North 18° 12' 53" East, a distance of 162.40 feet, to an iron pipe set;

8. South 66° 45' 43" East, a distance of 108.62 feet, to the **TRUE POINT OF BEGINNING**, containing 2.967 acres, more or less, subject to all easements, restrictions and rights-of-way of record.

Bearings in the above descriptions are based on the grid bearing of North 37° 22' 00" East for the old centerline of Lafayette Road as determined by a GPS Network of field observations performed in May, 2000

All iron pipes set are 3/4" dia., 30 inches in length, with a yellow cap stamped "STANTEC".

Stantec Consulting Services Inc.



Tim Baker 3-14-17

Tim A. Baker, P.S. Date
Professional Surveyor No. S-7818

**SPLIT APPROVED
NO PLAT REQUIRED**

Joseph D. Mason

Safety Service Director

**DESCRIPTION OF A
0.227 ACRE TRACT
(AREA 6)
CITY OF LONDON
MADISON COUNTY, OHIO**

Situated in the State of Ohio, Madison County, City of London, lying in Virginia Military Survey No. 5802, and lying on, over and across that 15.159 acre tract as conveyed to Maronda Homes Inc. of Ohio by deed of record in Official Record 215, Page 2169, Parcel No. 31-03399.080 (all records herein are from the Recorder's Office, Madison County, Ohio) and being more particularly described as follows:

Begin for reference at an iron pipe set at the northwesterly corner of Reserve G of "Chevington Place Section 3" a subdivision of record in Slide B, Pages 296-298, a common corner to the said 15.159 acre tract and an original 194.667 acre tract as conveyed to MTB Corp. by deed of record in Deed Book 298, Page 400;

Thence the following courses and distances along the lines common to said 15.159 acre and original 194.667 acre tracts:

1. South 82°20'44" West, a distance of 301.00 feet, to 3/4 inch iron pipe set;
2. South 07°39'16" East, a distance of 125.00 feet, to 3/4 inch iron pipe set at a common corner of said 15.159 acre tract and an original 194.667 acre tract;

Thence the following courses and distances along the lines common to said 15.159 acre and original 194.667 acre tracts and an original 509.66 acre tract as conveyed to MTB Corp by deed of record in Official Record 10, Page 1057;

1. South 82°20'44" West, a distance of 446.63 feet, to 3/4 inch iron pipe set;
2. South 86°56'40" West, a distance of 60.00 feet, to 3/4 inch iron pipe set and the **Point of True Beginning** for the herein described;

Thence the following courses and distances along the 15.159 acre tract;

1. Along an arc of a curve to the right having a central angle of 00°37'18", a radius of 445.00 feet, an arc length of 4.83 feet, with a chord bearing of South 02°44'41" East, and a chord length of 4.83 feet, to 3/4 inch iron pipe set;
2. South 82°20'44" West, a distance of 78.37 feet, to 3/4 inch iron pipe set;
3. North 07°39'16" West, a distance of 125.00 feet, to 3/4 inch iron pipe set;

Thence the following courses and distances across the said 15.159 acre tract:

1. North 82°20'44" East, a distance of 55.22 feet, to 3/4 inch iron pipe set;
2. Along the arc of a curve to the right having a central angle of 90°00'00", a radius of 25.00 feet, an arc length of 39.27 feet, with a chord bearing of South 52°39'16" East, and a chord length of 35.36 feet, to 3/4 inch iron pipe set;
3. South 07°39'16" East, a distance of 59.51 feet, to 3/4 inch iron pipe set;
4. Along the arc of a curve to the right having a central angle of 04°35'55", a radius of 445.00 feet, an arc length of 35.72 feet, with a chord bearing of South 05°21'18" East, and a chord length of 35.71 feet, to the **Point of**

True Beginning, containing 0.227 acres, more or less, being subject to all easements and restrictions of record.

Bearings in the above descriptions are based on the grid bearing of North 37° 22' 00" East for the old centerline of Lafayette Road as determined by a GPS Network of field observations performed in May, 2000.

All iron pipes set are 3/4" dia., 30 inches in length, with a yellow cap stamped "STANTEC".

Stantec Consulting Services Inc.



Tim Baker 3-14-17

Tim A. Baker, P.S. Date
Professional Surveyor No. S-7818

**SPLIT APPROVED
NO PLAT REQUIRED**

Joseph D. Morin
Safety Service Director

**DESCRIPTION OF A
0.894 ACRE TRACT
(AREA 8)
CITY OF LONDON
MADISON COUNTY, OHIO**

Situated in the State of Ohio, Madison County, City of London, lying in Virginia Military Survey No. 5802, and lying on, over and across that original 194.667 acre tract as conveyed to MTB Corporation by deed of record in Deed Book 298, Page 400, Parcel No. 31-03576.000 (all records herein are from the Recorder's Office, Madison County, Ohio) and being more particularly described as follows:

BEGINNING at an iron pipe set at the northwesterly corner of Reserve G of "Chevington Place Section 3" a subdivision of record in Slide B, Pages 296-298, at a common corner of said 194.667 acre tract, and a common corner to that 15.159 acre tract as conveyed to Maronda Homes Inc. of Ohio by deed of record in Official Record 215, Page 2169;

Thence South 18° 17' 00" West, a distance of 140.74 feet, along the westerly line of said Reserve G, and along an easterly line of said 194.667 acre tract, to a point;

Thence the following three (3) courses and distances across said original 194.667 acre tract;

1. South 71° 37' 09" West, a distance of 126.09 feet, to an iron pipe set;
2. South 18° 22' 51" East, a distance of 10.59 feet, to an iron pipe set;
3. South 87° 25' 14" West, a distance of 117.99 feet, to an iron pipe set;

Thence the following two (2) courses and distances along the lines common to said original 194.667 acre tract and that 15.159 acre tract as conveyed to Maronda Homes Inc. of Ohio by deed of record in Official Record 215, Page 2169;

1. North 07° 39' 16" West, a distance of 150.00 feet, to an iron pipe set;
2. North 82° 20' 44" East, a distance of 301.00 feet, to the **POINT OF BEGINNING**, containing 0.894 acre, more or less, subject to all easements, restrictions and rights-of-way of record.

Bearings in the above descriptions are based on the grid bearing of North 37° 22' 00" East for the old centerline of Lafayette Road as determined by a GPS Network of field observations performed in May, 2000.

All iron pipes set are 3/4" dia., 30 inches in length, with a yellow cap stamped "STANTEC".



Stantec Consulting Services Inc.

Tim Baker 3-14-17
Tim A. Baker, P.S. Date
Professional Surveyor No. S-7818

**SPLIT APPROVED
NO PLAT REQUIRED**

Jay D. Mason

Safety Service Director