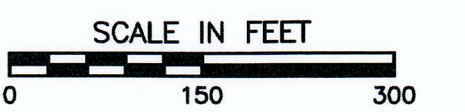


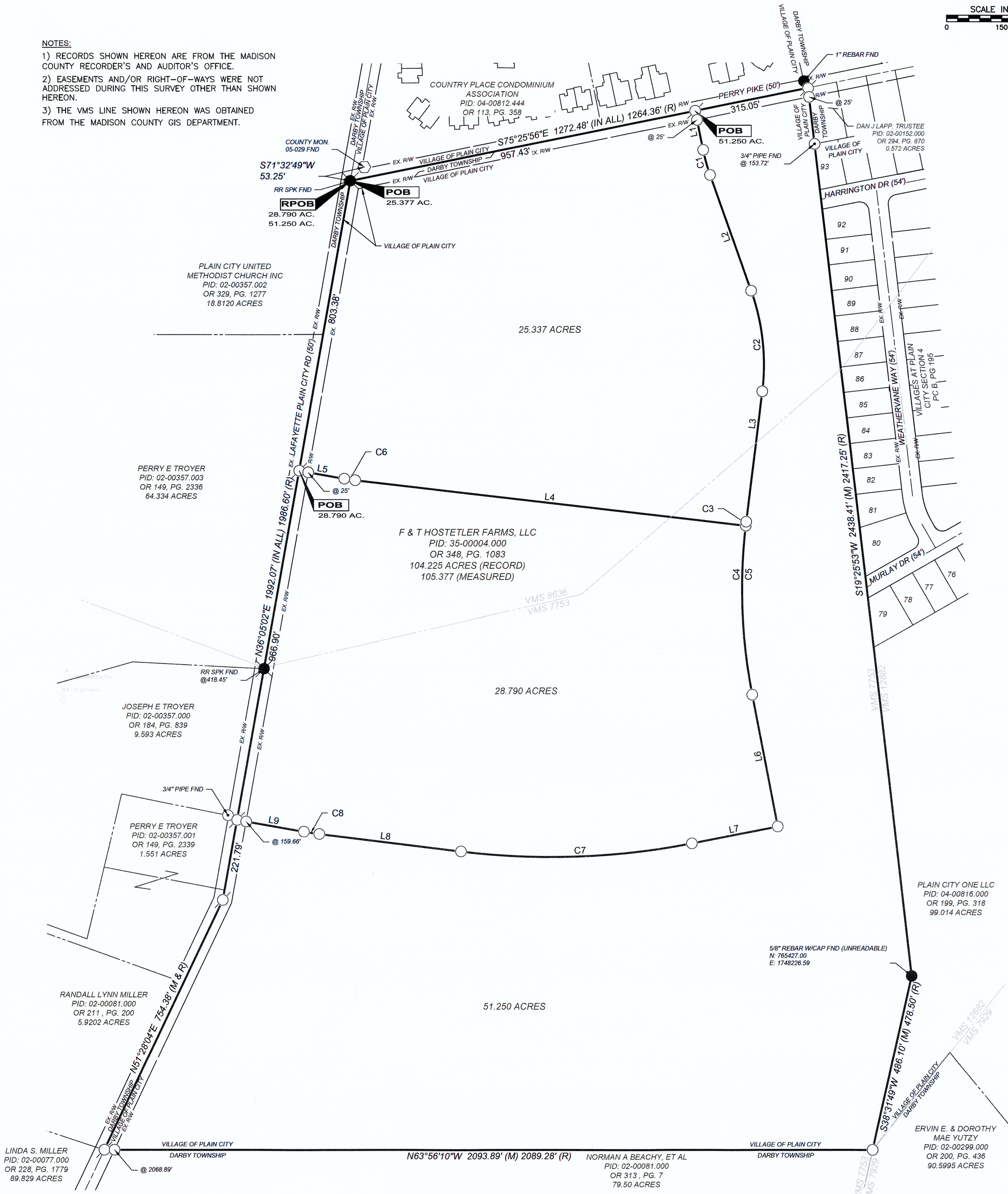
BOUNDARY SURVEY LOT SPLIT

STATE OF OHIO, COUNTY OF MADISON, VILLAGE OF PLAIN CITY TOWNSHIP OF DARBY, VMS 8636 & 7753



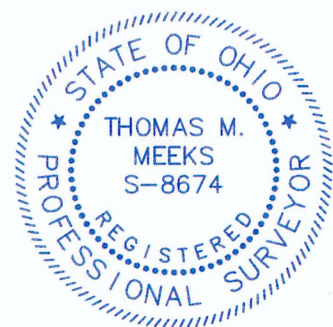
NOTES:

- 1) RECORDS SHOWN HEREON ARE FROM THE MADISON COUNTY RECORDER'S AND AUDITOR'S OFFICE.
- 2) EASEMENTS AND/OR RIGHT-OF-WAYS WERE NOT ADDRESSED DURING THIS SURVEY OTHER THAN SHOWN HEREON.
- 3) THE VMS LINE SHOWN HEREON WAS OBTAINED FROM THE MADISON COUNTY GIS DEPARTMENT.



ACREAGE BREAKDOWNS:

- 25.337 ACRES:**
 DARBY TOWNSHIP: 0.552 ACRES
 VILLAGE OF PLAIN CITY: 24.785 ACRES
- 51.250 ACRES:**
 DARBY TOWNSHIP: 0.181 ACRES
 VILLAGE OF PLAIN CITY: 51.069 ACRES
- 28.790 ACRES:**
 VILLAGE OF PLAIN CITY: 28.790 ACRES



LEGEND

- IRON PIN SET
- IRON PIN FOUND
- MAGNAIL SET
- ⊗ R x R SPIKE FOUND
- ⊙ PIPE FOUND
- SUBJECT BOUNDARY & SPLIT LINES
- VIRGINIA MILITARY SURVEY
- PARCEL LINES
- CENTERLINE R/W
- EX. R/W R/W LIMITS

LINE TABLE		
LINE #	BEARING	DISTANCE
L1	S14°34'04"W	108.66'
L2	S6°27'30"W	335.26'
L3	S33°05'56"W	358.16'
L4	N57°18'53"W	1071.33'
L5	N53°54'58"W	124.59'
L6	S14°59'33"W	366.03'
L7	N75°00'27"W	239.38'
L8	N56°55'44"W	389.14'
L9	N53°54'58"W	184.66'

CURVE TABLE					
CURVE #	LENGTH	RADIUS	DELTA	BEARING	CHORD
C1	70.77	500.00	8°06'34"	S10° 30' 47"W	70.71
C2	278.98	600.00	26°38'26"	S19° 46' 43"W	276.47
C3	10.83	1500.00	0°24'49"	S32° 53' 32"W	10.83
C4	463.19	1500.00	17°41'34"	S23° 50' 20"W	461.36
C5	474.03	1500.00	18°06'23"	N24° 02' 45"E	472.06
C6	29.66	500.00	3°23'55"	N55° 36' 55"W	29.65
C7	631.06	2000.00	18°04'43"	N65° 58' 05"W	628.45
C8	42.07	800.00	3°00'46"	N55° 25' 21"W	42.06

BASIS OF BEARINGS

THE BEARINGS DESCRIBED HEREIN ARE BASED ON GRID NORTH (NORTH 0°00'00" EAST) FROM GPS OBSERVATIONS UTILIZING THE OHIO STATE PLANE NORTH AMERICAN DATUM 1983 (2011 ADJ., SOUTH ZONE) COORDINATE SYSTEM. ALL DISTANCES EXPRESSED HEREIN ARE IN US SURVEY FEET.

IRON PINS

WHERE SHOWN HEREON, AND UNLESS OTHERWISE NOTED, ARE TO BE SET 5/8 INCH IN DIAMETER, 30 INCH LONG REBAR WITH A YELLOW CAP INSCRIBED "CT CONSULTANTS."



WE HEREBY CERTIFY THAT THE FOREGOING BOUNDARY SURVEY WAS PREPARED WITH ACTUAL FIELD MEASUREMENTS IN ACCORDANCE WITH CHAPTER 4733-37 OF THE OHIO ADMINISTRATIVE CODE

DATE: 8/25/2020

THOMAS M. MEEKS
 OHIO REGISTRATION/LICENSE NO. 8674

DATE: 8/24/2020
 SCALE: 1" = 150'
 DRAWN BY: JWC
 CHECKED BY: TMM
 APPROVED BY: TMM

F & T HOSTETLER FARMS
 STATE OF OHIO,
 COUNTY OF MADISON,
 VILLAGE OF PLAIN CITY

LOT SPLIT

PROJECT NO.	
19023501	
DISCIPLINE	
SURVEY	
SHEET NAME	
SPLIT	
SHEET	OF
1	1

DESCRIPTION OF 25.337 ACRES MADISON COUNTY, OHIO

Situated in the State of Ohio, County of Madison, Village of Plain City, Township of Darby, VMS 8636 & 7753, and being part of that 104.225 acres conveyed to F & T Hostetler Farms LLC of record in Official Record Volume 348, Page 1083 (104.644 acres in Parcel No. 35-00004.000 & 0.733 acres in Parcel 02-00064.000 per annexation recorded in OR 362, Page 1689), all of record in the Madison County Recorder's and Auditor's office and being more particularly described as follows;

POINT OF TRUE BEGINNING; at a railroad spike found at the right-of-way centerline intersection of Perry Pike Road (50') and Lafayette Plain City Road (50'), said centerline intersection being a deflection point in the corporation line between said Village of Plain City and said Darby Township, said railroad spike being the northwesterly corner of said 104.225 acres and being on the easterly line of a 18.8120 acre tract conveyed to Plain City United Methodist Church, Inc, of record in Official Record Volume 329, Page 1277, said railroad spike being South $71^{\circ}32'49''$ West, a distance of 53.25 feet from Madison County Monument 05-029 found;

Thence, South $75^{\circ}25'56''$ East, with said corporation line and said centerline of said Perry Pike, said centerline being a common line to said 104.225 acres and County Place Condominium Association, of record in Official Record Volume 113, Page 358, a distance of 957.43 feet, to a magnail set;

Thence, leaving said centerline, said common line, said corporation line, passing another corporation line, and through said 104.225 acres, the following courses:

South $14^{\circ}34'04''$ West, passing an iron pin set at 25.00 feet on another corporation line, a total distance of 108.66 feet, to an iron pin set;

With the arc of a curve to the left, having a radius of 500.00 feet, a delta angle of $8^{\circ}06'34''$, arc length of 70.77 feet, a bearing of South $10^{\circ}30'47''$ West, and chord distance of 70.71 feet, to an iron pin set;

South $06^{\circ}27'30''$ West, a distance of 335.26 feet, to an iron pin set;

With the arc of a curve to the right, having a radius of 600.00 feet, a delta angle of $26^{\circ}38'26''$, arc length of 278.98 feet, a bearing of South $19^{\circ}46'43''$ West, and chord distance of 276.47 feet, to an iron pin set;

South $33^{\circ}05'56''$ West, a distance of 358.16 feet, to an iron pin set;

With the arc of a curve to the left, having a radius of 1500.00 feet, a delta angle of $0^{\circ}24'49''$, arc length of 10.83 feet, a bearing of South $32^{\circ}53'32''$ West, and chord distance of 10.83 feet, to an iron pin set;

North $57^{\circ}18'53''$ West, a distance of 1071.33 feet, to an iron pin set;

With the arc of a curve to the right, having a radius of 500.00 feet, a delta angle of $3^{\circ}23'55''$, arc length of 29.66 feet, a bearing of North $55^{\circ}36'55''$ West, and chord distance of 29.65 feet, to an iron pin set;



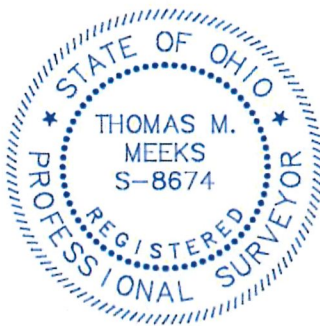
North 53°54'58" West, passing an iron pin set at 99.59 feet, a total distance of 124.59 feet, to a magnail set on the centerline right-of-way of said Lafayette Plain City Road, also being another corporation line, said centerline being a line common with said 104.225 acres and a 64.334 acre tract conveyed to Perry E. Troyer, of record in Official Record Volume 149, Page 2336

Thence, North 36°05'02" East, with said centerline, said corporation line, in part with said common line, and in part with a line common to said 104.225 acres and said 18.8120 acres, a distance of 803.38 feet, to the **POINT OF TRUE BEGINNING**, containing 25.337 acres, more or less, and being subject to all easements of record. Of said 25.337 acres, 0.552 acres are within the limits of the Township of Darby, and 24.785 acres are within the limits of the Village of Plain City.

Where indicated hereon, all iron pins set are 5/8 inch diameter rebar, 30 inches in length, having a yellow cap bearing the inscription "CT Consultants."

The bearings described herein are based on grid north (North 0°00'00" East) from GPS observations utilizing the Ohio State Plane North American Datum 1983 (2011 adj, South Zone) coordinate system. All distances expressed herein are in US Survey Feet.

This description is based on an actual field survey performed during the month of February 2019, by or under the direct supervision of Thomas M. Meeks, registered surveyor #8674.



CT Consultants, Inc.

 8/25/2020

Thomas M. Meeks P.S.
Registered Surveyor No. 8674

Date

**DESCRIPTION OF 28.790 ACRES
MADISON COUNTY, OHIO**

Situated in the State of Ohio, County of Madison, Village of Plain City, VMS 8636 & 7753, and being part of that 104.225 acres conveyed to F & T Hostetler Farms LLC of record in Official Record Volume 348, Page 1083 (104.644 acres in Parcel No. 35-00004.000 & 0.733 acres in Parcel 02-00064.000 per annexation recorded in OR 362, Page 1689), all of record in the Madison County Recorder's and Auditor's office and being more particularly described as follows;

BEGINNING FOR REFERENCE; at a railroad spike found at the right-of-way centerline intersection of Perry Pike Road (50') and Lafayette Plain City Road (50'), said centerline intersection being a deflection point in the corporation line between said Village of Plain City and said Darby Township, said railroad spike being the northwesterly corner of said 104.225 acres and being on the easterly line of a 18.8120 acre tract conveyed to Plain City United Methodist Church, Inc, of record in Official Record Volume 329, Page 1277, said railroad spike being South $71^{\circ}32'49''$ West, a distance of 53.25 feet from Madison County Monument 05-029 found;

Thence, South $36^{\circ}05'02''$ West, in part with said corporation line and with the centerline right-of-way of said Lafayette Plain City Road, in part with a line common to said 104.225 acres, 18.8120 acres, and a 64.334 acre tract conveyed to Perry E. Troyer of record in Official Record Volume 149, Page 2336, a distance of 803.38 feet, to a magnail set at the **POINT OF TRUE BEGINNING;**

Thence, leaving said corporation line, said centerline right-of-way, said common line, and through said 104.225 acres, the following courses:

South $53^{\circ}54'58''$ East, passing an iron pin set 25.00 feet, a total distance of 124.59 feet, to an iron pin set;

With the arc of a curve to the left, having a radius of 500.00 feet, a delta angle of $3^{\circ}23'55''$, arc length of 29.66 feet, a bearing of South $55^{\circ}36'55''$ East, and chord distance of 29.65 feet, to an iron pin set;

South $57^{\circ}18'53''$ East, a distance of 1071.33 feet, to an iron pin set;

With the arc of a curve to the left, having a radius of 1500.00 feet, a delta angle of $17^{\circ}41'34''$, arc length of 463.19 feet, a bearing of South $23^{\circ}50'20''$ West, and chord distance of 461.36 feet, to an iron pin set;

South $14^{\circ}59'33''$ West, a distance of 366.03 feet, to an iron pin set;

North $75^{\circ}00'27''$ West, a distance of 239.38 feet, to an iron pin set;

With the arc of a curve to the right, having a radius of 2000.00 feet, a delta angle of $18^{\circ}04'43''$, arc length of 631.06 feet, a bearing of North $65^{\circ}58'05''$ West, and chord distance of 628.45 feet, to an iron pin set;

North $56^{\circ}55'44''$ West, a distance of 389.14 feet, to an iron pin set;

With the arc of a curve to the right, having a radius of 800.00 feet, a delta angle of $3^{\circ}00'46''$, arc length of 42.07 feet, a bearing of North $55^{\circ}25'21''$ West, and chord distance of 42.06 feet, to an iron pin set;



North 53°54'58" West, passing an iron pin set at 159.66 feet, a total distance of 184.66 feet, to a magnail set on said corporation line and said centerline right-of-way, said centerline right-of-way being a line common to said 104.225 acres and a 1.551 acre tract conveyed to Perry E. Troyer, of record in Official Record Volume 149, Page 2339;

Thence, North 36°05'02" East, with said corporation line and in part with said common line, in part with a line common to said 104.225 acres and a 9.593 acre tract conveyed to Joseph E. Troyer, of record in Official Record Volume 184, Page 839, in part with a line common to said 104.225 acres and said 64.334 acres, passing a railroad spike found at 418.45 feet, a total distance of 966.90 feet to the **POINT OF TRUE BEGINNING**, containing 28.790 acres, more or less, and being subject to all easements of record.

Where indicated hereon, all iron pins set are 5/8 inch diameter rebar, 30 inches in length, having a yellow cap bearing the inscription "CT Consultants."

The bearings described herein are based on grid north (North 0°00'00" East) from GPS observations utilizing the Ohio State Plane North American Datum 1983 (2011 adj, South Zone) coordinate system. All distances expressed herein are in US Survey Feet.

This description is based on an actual field survey performed during the month of February 2019, by or under the direct supervision of Thomas M. Meeks, registered surveyor #8674.



CT Consultants, Inc.

 8/25/2020

Thomas M. Meeks P.S.

Date

Registered Surveyor No. 8674

DESCRIPTION OF 51.250 ACRES MADISON COUNTY, OHIO

Situated in the State of Ohio, County of Madison, Village of Plain City, Township of Darby, VMS 8636 & 7753, and being part of that 104.225 acres conveyed to F & T Hostetler Farms LLC of record in Official Record Volume 348, Page 1083 (104.644 acres in Parcel No. 35-00004.000 & 0.733 acres in Parcel 02-00064.000 per annexation recorded in OR 362, Page 1689), all of record in the Madison County Recorder's and Auditor's office and being more particularly described as follows;

BEGINNING FOR REFERENCE; at a railroad spike found at the right-of-way centerline intersection of Perry Pike Road (50') and Lafayette Plain City Road (50'), said centerline intersection being a deflection point in the corporation line between said Village of Plain City and said Darby Township, said railroad spike being the northwesterly corner of said 104.225 acres and being on the easterly line of a 18.8120 acre tract conveyed to Plain City United Methodist Church, Inc, of record in Official Record Volume 329, Page 1277, said railroad spike being South $71^{\circ}32'49''$ West, a distance of 53.25 feet from Madison County Monument 05-029 found;

Thence, South $75^{\circ}25'56''$ East, with said corporation line and with said centerline of said Perry Pike, said centerline being a common line to said 104.225 acres and County Place Condominium Association, of record in Official Record Volume 113, Page 358, a distance of 957.43 feet, to a magnail set at the **POINT OF TRUE BEGINNING;**

Thence, South $75^{\circ}25'56''$ East, continuing with said corporation line, said centerline and said common line, a distance of 315.05 feet, to a magnail set at a corner common to said 104.225 acres and a 0.572 acre tract conveyed to Dan J. Lapp, Trustee, of record in Official Record Volume 294, Page 870;

Thence South $19^{\circ}25'53''$ West, leaving said centerline, in part with said corporation line and in part with a line common to said 104.225 acres, said 0.572 acres, Villages at Plain City Section 4 of record in Plat Cabinet B, Page 195, and a 99.014 acre tract conveyed to Plain City One, LLC, of record in Official Record Volume 199, Page 318, and a line common to VMS 7753 & VMS 12882, passing a 3/4 inch pipe found at a distance of 153.72 feet, a total distance of 2438.41 feet, to a 5/8 inch rebar with cap found (unreadable);

Thence, South $38^{\circ}31'49''$ West, with a line common to said 104.225 acres and said 99.014 acres, and said VMS 7753 & VMS 12882, a distance of 486.10 feet, to an iron pin set at a corner common to said 104.225 acres, a 90.5995 acre tract conveyed to Ervin E. & Dorothy Mae Yutzy, of record in Official Record Volume 200, Page 436, and a 79.50 acre tract conveyed to Norman A. Beachy, Et Al, of record in Official Record Volume 313, Page 7, said iron pin found also being a deflection point of said corporation line and a corner common to said VMS 7753, said VMS 12882, and VMS 7929;

Thence, North $63^{\circ}56'10''$ West, with said corporation line and with a line common to said 104.225 acres and said 79.50 acres, passing an iron pin set at a distance of 2068.89 feet, a total distance of 2093.89 feet, to a magnail set on the centerline right-of-way of said Lafayette Plain City Road, said said magnail being a point of deflection in said corporation line and on the easterly line of a 5.9209 acre tract conveyed to Randall Lynn Miller, of record in Official Record Volume 211, Page 200;

Thence, North $51^{\circ}28'04''$ East, with said corporation line and said centerline, in part with a line common to said 104.225 acres, said 5.9202 acres, and a 64.334 acre tract conveyed to Perry E. Troyer, of record in Official Record Volume 149, Page 2336, a distance of 754.38 feet to a magnail set;



Thence, North $36^{\circ}05'02''$ East, continuing with said corporation line and said centerline, in part with a line common to said 104.225 acres and said 64.334 acres, in part with a line common to said 104.225 acres and a 1.551 acre tract conveyed to Perry E. Troyer, of record in Official Record Volume 149, Page 2339, a distance of 221.79 feet, to a magnail set on a line common to said 104.225 acres, said 1.551 acres;

Thence, leaving said corporation line, said common line, said centerline, and through said 104.225 acres, the following courses;

South $53^{\circ}54'58''$ East, passing an iron pin set at 25.00 feet, a total distance of 184.66 feet, to an iron pin set;

With the arc of a curve to the left, having a radius of 800.00 feet, a delta angle of $3^{\circ}00'46''$, arc length of 42.07 feet, a bearing of South $55^{\circ}25'21''$ East, and chord distance of 42.06 feet, to an iron pin set;

South $56^{\circ}55'44''$ East, a distance of 389.14 feet, to an iron pin set;

With the arc of a curve to the left, having a radius of 2000.00 feet, a delta angle of $18^{\circ}04'43''$, arc length of 631.06 feet, a bearing of South $65^{\circ}58'05''$ East, and chord distance of 628.45 feet, to an iron pin set;

South $75^{\circ}00'27''$ East, a distance of 239.38 feet, to an iron pin set;

North $14^{\circ}59'33''$ East, a distance of 366.03 feet, to an iron pin set;

With the arc of a curve to the right, having a radius of 1500.00 feet, a delta angle of $18^{\circ}06'23''$, arc length of 474.03 feet, a bearing of North $24^{\circ}02'45''$ East, and chord distance of 472.06 feet, to an iron pin set;

North $33^{\circ}05'56''$ East, a distance of 358.16 feet, to an iron pin set;

With the arc of a curve to the left, having a radius of 600.00 feet, a delta angle of $26^{\circ}38'26''$, arc length of 278.98 feet, a bearing of North $19^{\circ}46'43''$ East, and chord distance of 276.47 feet, to an iron pin set;

North $06^{\circ}27'30''$ East, a distance of 335.26 feet, to an iron pin set;

With the arc of a curve to the right, having a radius of 500.00 feet, a delta angle of $8^{\circ}06'34''$, arc length of 70.77 feet, a bearing of North $10^{\circ}30'47''$ East, and chord distance of 70.71 feet, to an iron pin set;

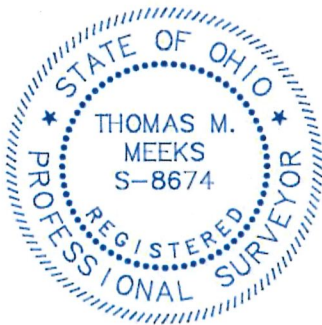
North $14^{\circ}34'04''$ East, passing an iron pin set on the corporation line at 83.66 feet, a total distance of 108.66 feet, to the **POINT OF TRUE BEGINNING**, containing 51.250 acres, more or less, and being subject to all easements of record. Of said 51.250 acres, 0.181 acres are within the limits of the Township of Darby, and 51.069 acres are within the limits of the Village of Plain City.



Where indicated hereon, all iron pins set are 5/8 inch diameter rebar, 30 inches in length, having a yellow cap bearing the inscription "CT Consultants."

The bearings described herein are based on grid north (North 0°00'00" East) from GPS observations utilizing the Ohio State Plane North American Datum 1983 (2011 adj, South Zone) coordinate system. All distances expressed herein are in US Survey Feet.

This description is based on an actual field survey performed during the month of February 2019, by or under the direct supervision of Thomas M. Meeks, registered surveyor #8674.



CT Consultants, Inc.

Thomas M. Meeks 8/25/2020

Thomas M. Meeks P.S.
Registered Surveyor No. 8674

Date

Polyline Report

Wed Dec 4 17:22:50 2019

Northing	Easting	Bearing	Distance
767805.766	1748732.876		
		N 75°25'56" W	957.429
768046.585	1747806.228		
		S 36°05'02" W	803.383
767397.327	1747333.059		
		S 53°54'58" E	124.592
767323.946	1747433.749		
		Radius: 500.000 Chord: 29.655 Degree: 11°27'33" Dir: Left	
		Length: 29.659 Delta: 3°23'55" Tangent: 14.834	
		Chord BRG: S 55°36'55" E Rad-In: N 36°05'02" E Rad-Out: N 32°41'07" E	
		Radius Point: 767728.023,1747728.234	
767307.198	1747458.222		
		S 57°18'53" E	1071.334
766728.652	1748359.910		
		Radius: 1500.000 Chord: 10.831 Degree: 3°49'11" Dir: Right	
		Length: 10.831 Delta: 0°24'49" Tangent: 5.416	
		Chord BRG: N 32°53'32" E Rad-In: S 57°18'53" E Rad-Out: S 56°54'04" E	
		Radius Point: 765918.616,1749622.384	
766737.747	1748365.792		
		N 33°05'56" E	358.161
767037.789	1748561.379		
		Radius: 600.000 Chord: 276.473 Degree: 9°32'57" Dir: Left	
		Length: 278.980 Delta: 26°38'26" Tangent: 142.058	
		Chord BRG: N 19°46'43" E Rad-In: N 56°54'04" W Rad-Out: N 83°32'30" W	
		Radius Point: 767365.441,1748058.742	
767297.952	1748654.934		
		N 06°27'30" E	335.257
767631.082	1748692.645		
		Radius: 500.000 Chord: 70.709 Degree: 11°27'33" Dir: Right	
		Length: 70.768 Delta: 8°06'34" Tangent: 35.443	
		Chord BRG: N 10°30'47" E Rad-In: S 83°32'30" E Rad-Out: S 75°25'56" E	
		Radius Point: 767574.841,1749189.471	
767700.604	1748705.546		
		N 14°34'04" E	108.656
767805.766	1748732.876		

Closure Error Distance > 0.00000

Total Distance > 4149.051

Polyline Area: 1103699.5 sq ft, 25.337 acres

Thomas M. Meeks
8/25/2020



Polyline Report

Wed Dec 4 17:24:07 2019

Northing	Easting	Bearing	Distance
767397.327	1747333.059		
		S 36°05'02" W	966.900
766615.923	1746763.584		
		S 53°54'58" E	184.663
766507.162	1746912.820		
Radius: 800.000 Chord: 42.063 Degree: 7°09'43" Dir: Left			
Length: 42.068 Delta: 3°00'46" Tangent: 21.039			
Chord BRG: S 55°25'21" E Rad-In: N 36°05'02" E Rad-Out: N 33°04'16" E			
Radius Point: 767153.685,1747383.996			
766483.290	1746947.452		
		S 56°55'44" E	389.140
766270.944	1747273.550		
Radius: 2000.000 Chord: 628.446 Degree: 2°51'53" Dir: Left			
Length: 631.060 Delta: 18°04'43" Tangent: 318.174			
Chord BRG: S 65°58'05" E Rad-In: N 33°04'16" E Rad-Out: N 14°59'33" E			
Radius Point: 767946.932,1748364.908			
766015.014	1747847.521		
		S 75°00'27" E	239.383
765953.087	1748078.756		
		N 14°59'33" E	366.030
766306.657	1748173.445		
Radius: 1500.000 Chord: 461.356 Degree: 3°49'11" Dir: Right			
Length: 463.194 Delta: 17°41'34" Tangent: 233.455			
Chord BRG: N 23°50'20" E Rad-In: S 75°00'27" E Rad-Out: S 57°18'53" E			
Radius Point: 765918.616,1749622.384			
766728.652	1748359.910		
		N 57°18'53" W	1071.334
767307.198	1747458.222		
Radius: 500.000 Chord: 29.655 Degree: 11°27'33" Dir: Right			
Length: 29.659 Delta: 3°23'55" Tangent: 14.834			
Chord BRG: N 55°36'55" W Rad-In: N 32°41'07" E Rad-Out: N 36°05'02" E			
Radius Point: 767728.023,1747728.234			
767323.946	1747433.749		
		N 53°54'58" W	124.592
767397.327	1747333.059		

Closure Error Distance > 0.00000

Total Distance > 4508.023

Polyline Area: 1254095.5 sq ft, 28.790 acres

Thomas M. Meeks
 8/25/2020



Polyline Report

Wed Dec 4 17:24:40 2019

Northing	Easting	Bearing	Distance
766615.923	1746763.584	S 53°54'58" E	184.663
766507.162	1746912.820	Radius: 800.000 Chord: 42.063 Degree: 7°09'43" Dir: Left Length: 42.068 Delta: 3°00'46" Tangent: 21.039 Chord BRG: S 55°25'21" E Rad-In: N 36°05'02" E Rad-Out: N 33°04'16" E Radius Point: 767153.685,1747383.996	
766483.290	1746947.452	S 56°55'44" E	389.140
766270.944	1747273.550	Radius: 2000.000 Chord: 628.446 Degree: 2°51'53" Dir: Left Length: 631.060 Delta: 18°04'43" Tangent: 318.174 Chord BRG: S 65°58'05" E Rad-In: N 33°04'16" E Rad-Out: N 14°59'33" E Radius Point: 767946.932,1748364.908	
766015.014	1747847.521	S 75°00'27" E	239.383
765953.087	1748078.756	N 14°59'33" E	366.030
766306.657	1748173.445	Radius: 1500.000 Chord: 472.055 Degree: 3°49'11" Dir: Right Length: 474.025 Delta: 18°06'23" Tangent: 239.005 Chord BRG: N 24°02'45" E Rad-In: S 75°00'27" E Rad-Out: S 56°54'04" E Radius Point: 765918.616,1749622.384	
766737.747	1748365.792	N 33°05'56" E	358.161
767037.789	1748561.379	Radius: 600.000 Chord: 276.473 Degree: 9°32'57" Dir: Left Length: 278.980 Delta: 26°38'26" Tangent: 142.058 Chord BRG: N 19°46'43" E Rad-In: N 56°54'04" W Rad-Out: N 83°32'30" W Radius Point: 767365.441,1748058.742	
767297.952	1748654.934	N 06°27'30" E	335.257
767631.082	1748692.645	Radius: 500.000 Chord: 70.709 Degree: 11°27'33" Dir: Right Length: 70.768 Delta: 8°06'34" Tangent: 35.443 Chord BRG: N 10°30'47" E Rad-In: S 83°32'30" E Rad-Out: S 75°25'56" E Radius Point: 767574.841,1749189.471	
767700.604	1748705.546	N 14°34'04" E	108.656
767805.766	1748732.876	S 75°25'56" E	315.052
767726.522	1749037.799	S 19°25'53" W	2438.410
765427.004	1748226.591	S 38°31'49" W	486.100
765046.739	1747923.785		

765966.741	1746042.837	N 63°56'10" W 2093.889
766436.685	1746632.958	N 51°28'04" E 754.380
766615.923	1746763.584	N 36°05'02" E 221.787

Closure Error Distance > 0.00000

Total Distance > 9787.808

Polyline Area: 2232440.2 sq ft, 51.250 acres

T. M. Meeks
8/25/2020

