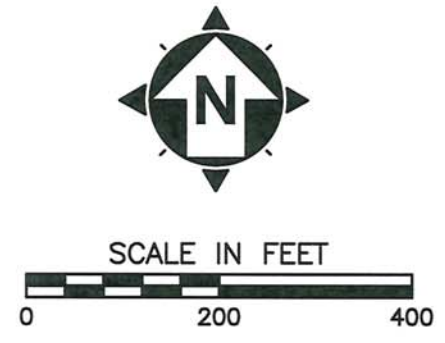
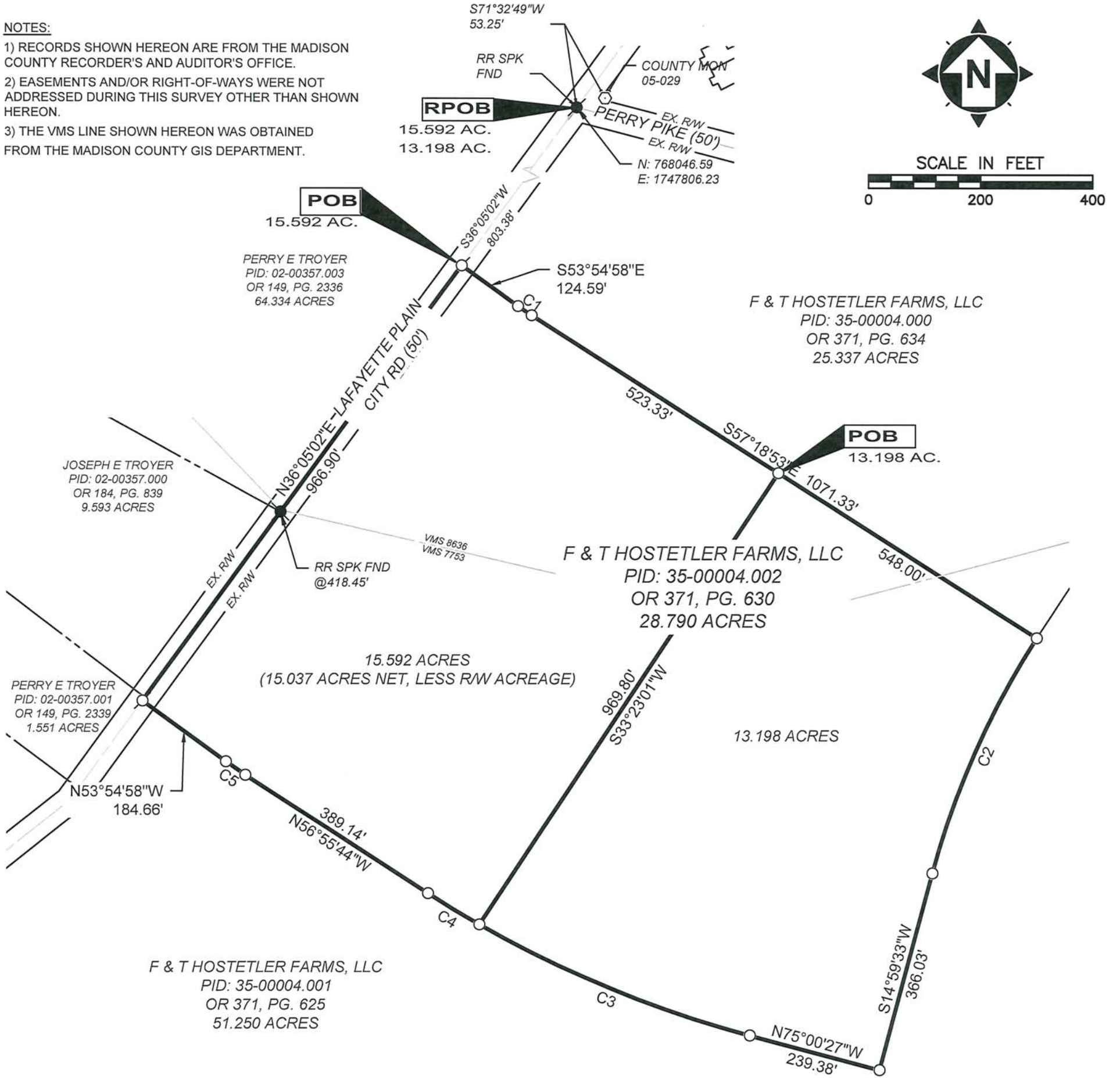


BOUNDARY SURVEY LOT SPLIT

STATE OF OHIO, COUNTY OF MADISON, VILLAGE OF PLAIN CITY, VMS 8636 & 7753

- NOTES:**
- 1) RECORDS SHOWN HEREON ARE FROM THE MADISON COUNTY RECORDER'S AND AUDITOR'S OFFICE.
 - 2) EASEMENTS AND/OR RIGHT-OF-WAYS WERE NOT ADDRESSED DURING THIS SURVEY OTHER THAN SHOWN HEREON.
 - 3) THE VMS LINE SHOWN HEREON WAS OBTAINED FROM THE MADISON COUNTY GIS DEPARTMENT.



LEGEND

- IRON PIN SET
- IRON PIN FOUND
- ⊙ MAGNAIL SET
- ⊗ R x R SPIKE FOUND
- SUBJECT BOUNDARY & SPLIT LINES
- VIRGINIA MILITARY SURVEY
- PARCEL LINES
- CENTERLINE R/W
- EX. RW
- R/W LIMITS

BASIS OF BEARINGS

THE BEARINGS DESCRIBED HEREIN ARE BASED ON GRID NORTH (NORTH 0°00'00" EAST) FROM GPS OBSERVATIONS UTILIZING THE OHIO STATE PLANE NORTH AMERICAN DATUM 1983 (2011 ADJ, SOUTH ZONE) COORDINATE SYSTEM. ALL DISTANCES EXPRESSED HEREIN ARE IN US SURVEY FEET.

IRON PINS

WHERE SHOWN HEREON, AND UNLESS OTHERWISE NOTED, ARE TO BE SET 5/8 INCH IN DIAMETER, 30 INCH LONG REBAR WITH A YELLOW CAP INSCRIBED "CT CONSULTANTS."

15.592 ACREAGE BREAKDOWN:

GROSS ACRES: 15.592 AC.
 ACREAGE IN R/W: 0.555 AC.
 NET ACREAGE: 15.037 AC.

CURVE TABLE

TAG #	LENGTH	RADIUS	DELTA	CHD BEARING	CHD DIST.
C1	29.66	500.00	3°23'55"	S55° 36' 55"E	29.65
C2	463.19	1500.00	17°41'34"	S23° 50' 20"W	461.36
C3	523.69	2000.00	15°00'09"	N67° 30' 22"W	522.19
C4	107.37	2000.00	3°04'33"	N58° 28' 01"W	107.36
C5	42.07	800.00	3°00'46"	N55° 25' 21"W	42.06



PROJECT NO: 19023501	DRAWING NAME: F & T HOSTETLER FARMS	SCALE: 1" = 200'	DATE: 2/24/2021		
SHEET 1	OF 1	DRAWN BY: JWC		DATE 3/10/2021	THOMAS M. MEEKS OHIO LICENSE NO. 8674
LOT SPLIT		CHECKED BY: TMM			
		APPROVED BY: TMM			