

PID NO. 11739

RIGHT OF WAY PLAN
STA. 160+00 TO STA. 165+00

MAD-142-0-49

28/33

226
231

INDUSTRIAL MATERIALS TECHNOLOGY, INC.

NECCO AMERICA CORPORATION

MTB CORP.

STANLEY ELECTRIC U.S. CO., INC.

MADISON COUNTY
CITY OF LONDON
VMS 5801

MONUMENT LEGEND

- IRON PIPE / IRON PIN FOUND
- IRON PIN SET

NOTE:

ALL SIDE ROAD BEARINGS AND STATIONING DELINEATED UPON THIS PLAN ARE TO THE CENTERLINE OF THE RIGHT-OF-WAY OF EACH ROAD.

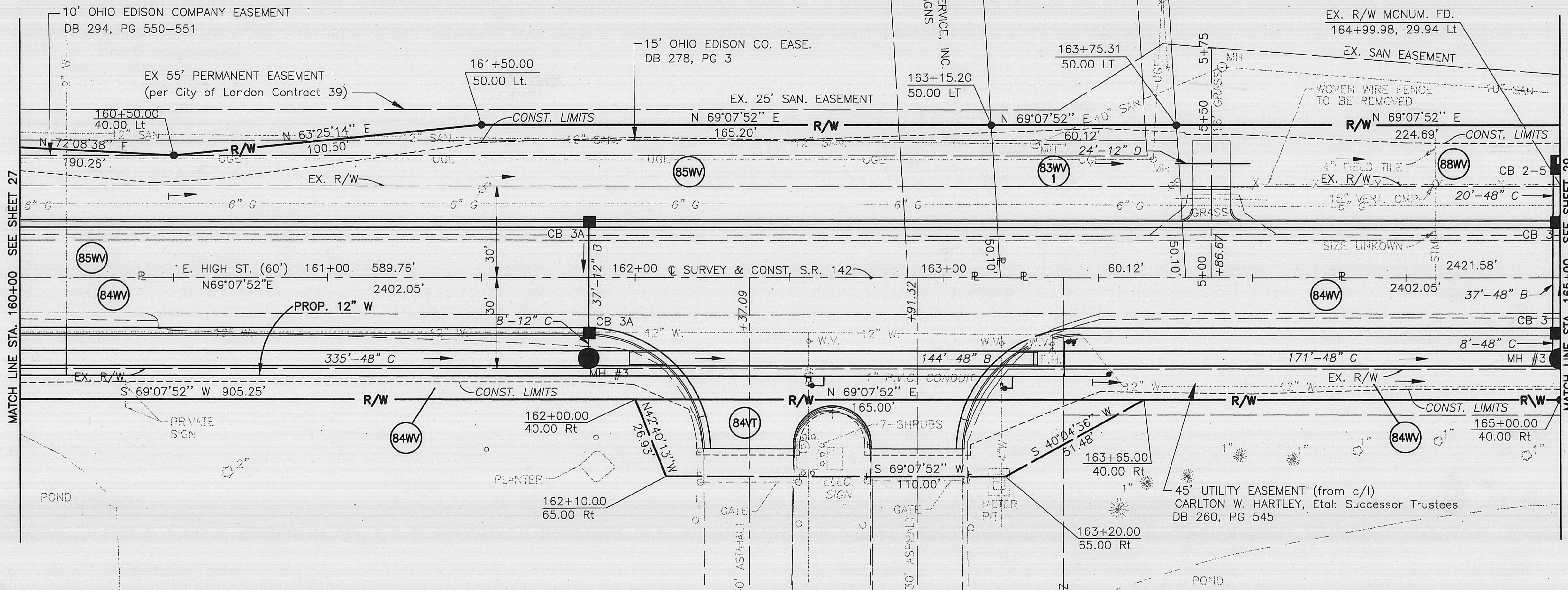
BASIS OF BEARINGS

ALL BEARINGS SHOWN ARE FOR PROJECT USE ONLY. THEY ARE BASED ON THE BEARINGS OF THE CENTERLINE OF STATE ROUTE 142 AS DELINEATED UPON THE STATE OF OHIO RIGHT OF WAY PLANS, MADISON COUNTY S.H.6, SECTION A-1, ON FILE IN THE OHIO DEPARTMENT OF TRANSPORTATION.

NOTE:

THE EXISTING R/W WIDTH AND LOCATION WERE DETERMINED USING THE FOLLOWING O.D.O.T. R/W PLANS.
MADISON COUNTY - I.C.H. No. 6 - SEC. LONDON EAST
MADISON COUNTY - S.H.6 - SEC A-1, A-2

REV.	DATE	DESCRIPTION
DATE OF COMPLETION: 6/12/98		



MATCH LINE STA. 160+00 SEE SHEET 27

MATCH LINE STA. 165+00 SEE SHEET 29