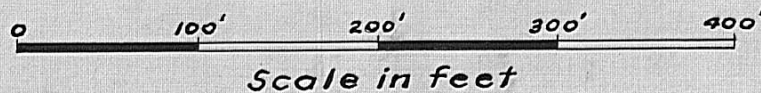


Scale 1"=100'

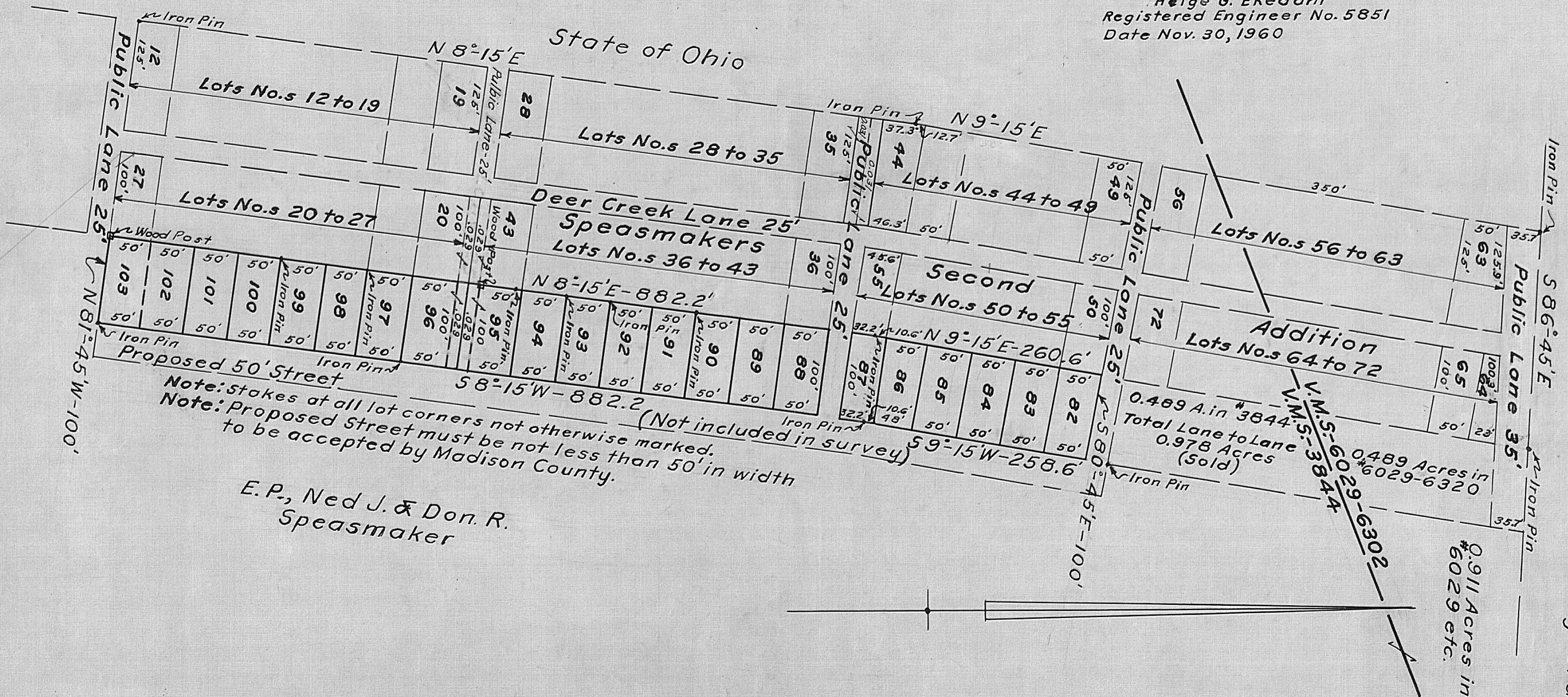
ANNEX SPEASMAKERS SECOND ADDITION MADISON LAKE



I certify the above Plat and Survey to be correct.

Helge G. Ekedahl

Registered Engineer No. 5851
Date Nov. 30, 1960



Note: stakes at all lot corners not otherwise marked.
Note: Proposed Street must be not less than 50' in width to be accepted by Madison County.

E. P., Ned J. & Don. R.
Speasmaker

Carrie J. Holway et al

0.911 Acres in #6029 etc.