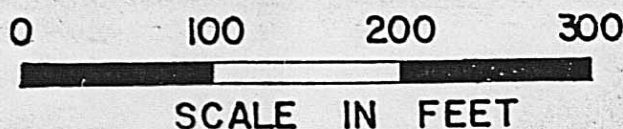
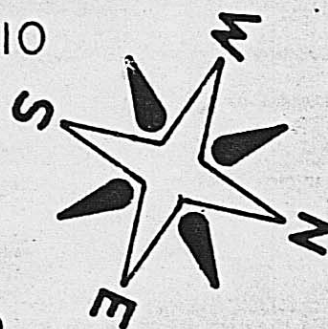


GIERICH WADE SUBDIVISION

FAIRFIELD TOWNSHIP, V.M.S. 6570, MADISON COUNTY, OHIO

4.8895 ACRES IN THE LOTS,
0.8851 ACRES DEDICATED TO
PUBLIC RIGHT-OF-WAY, FOR
A TOTAL OF 5.7746 ACRES.

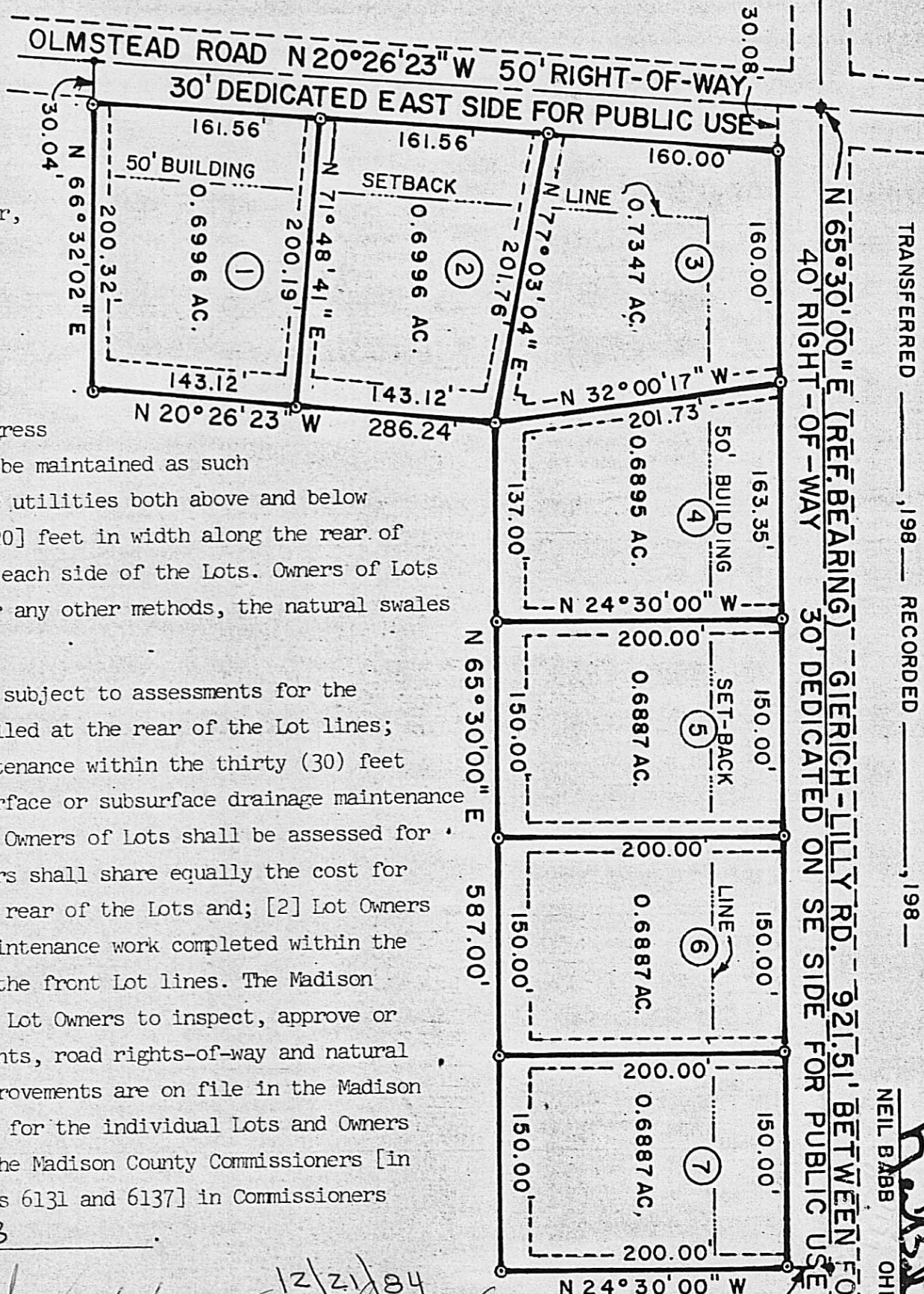


⊙ - IRON PIPES SET 3/4" IN
DIA. BY 30" IN LENGTH
WITH ALUMINUM CAPS
MARKED P.S. 5969

EASEMENTS AND ASSESSMENTS

Easements shown on this Plat are for the construction, operation, maintenance, repair, replacement or removal of water, storm sewers, surface drainage, electric, gas, telephone or other utilities or services, and for removal of any and all trees, or other obstructions, for the use of said utilities and for providing ingress and egress to the Lots for said purposes, and are to be maintained as such forever. Easements are reserved for public utilities both above and below the ground, said easements being twenty [20] feet in width along the rear of the Lots and ten [10] feet in width along each side of the Lots. Owners of Lots shall not alter or impair, by plantings or any other methods, the natural swales and waterways.

Further, said Lots and Owners thereof are subject to assessments for the maintenance of: [1] Subsurface tile installed at the rear of the Lot lines; [2] Driveway pipe and roadside ditch maintenance within the thirty (30) feet dedicated to highway use, and; [3] Any surface or subsurface drainage maintenance completed within dedicated easements. The Owners of Lots shall be assessed for maintenance work as follows: [1] Lot Owners shall share equally the cost for maintaining the subsurface tile along the rear of the Lots and; [2] Lot Owners shall be assessed individually for all maintenance work completed within the (30) feet dedicated to highway use along the front Lot lines. The Madison County Engineer shall be requested by the Lot Owners to inspect, approve or disapprove all construction within easements, road rights-of-way and natural waterways. Construction Plans for the improvements are on file in the Madison County Engineer's Office. The assessments for the individual Lots and Owners thereof are as approved and accepted by the Madison County Commissioners [in accordance with Ohio Revised Code Chapters 6131 and 6137] in Commissioners Journal No. 42, page 568.



MADISON COUNTY AUDITOR
TRANSFERRED _____, 198
MADISON COUNTY RECORDER
RECORDED _____, 198

I HEREBY CERTIFY THAT I SURVEYED
THE HEREON PLAT AND THAT IT IS CORRECT.
NEIL BABB
OHIO PS. 5969
1981

12/26/84
Mr. Paul
Madison County Engineer

12/21/84
James H. ...
Chairman, Planning Commission

12/21/84
Tom Alexander
Madison Co. Health Dept.

12/21/84
Robert C. Dorn
County Zoning Inspector

Board of Madison County Commissioners:

12/29/84
Robert Edwards
Robert Edwards

12/29/84
Lewis S. Overturf
Lewis S. Overturf

12/29/84
Herbert C. Markley
Herbert C. Markley

PROPERTY LINE

THOMAS L. PARKER
4.52 AC.

State of Ohio, Madison County, ss.: BE IT REMEMBERED, that on this _____ day of _____ A.D. 1981, before me the subscriber, a notary public in and for said County, personally came the below named GIERICH A. WADE and MARJORIE M. WADE, and acknowledge the signing of the dedication of this plat to be their voluntary act and deed for the uses and purposes hereon expressed, IN WITNESS WHEREOF, I have hereunto subscribed my name and affixed my official seal.

MY COMMISSION EXPIRES _____

NOTARY PUBLIC _____

MADISON COUNTY, OHIO

We, the undersigned owners of the hereon platted 5.7746 acres, the 5.7746 acres being part of an original 130.45 acre tract recorded in the Madison County Recorder's Office in deed book 218, pages 235 and 236, do hereby certify and accept this plat as a true representation of the 5.7746 acres of the Gierich Wade Subdivision:

WIFE OF GRANTOR

DRAINAGE IMPROVEMENT PLANS
FOR THE
GIERICH WADE SUBDIVISION IN
FAIRFIELD TWP., MADISON CO., OHIO

ESTIMATE OF QUANTITIES

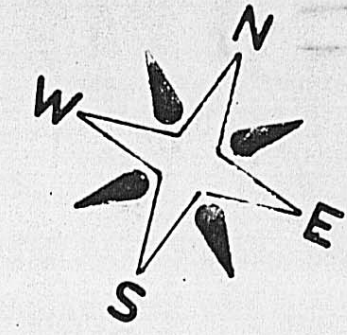
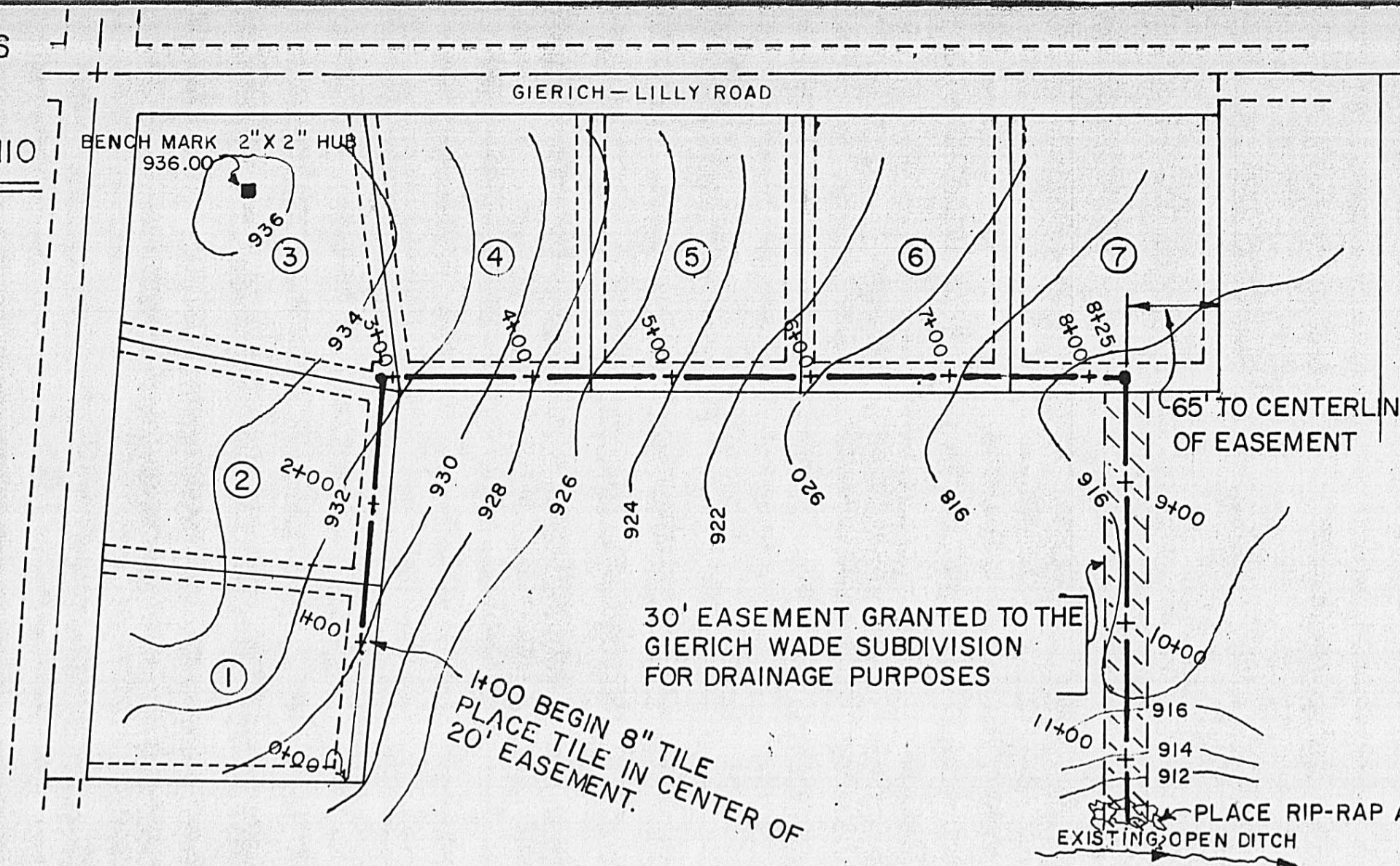
1050 LIN. FT. 8" DIA. PERFORATED
PLASTIC TILE

2 STD. 2-2 B CATCH BASINS WITH
CAST IRON GRATES

20 LIN. FT. 10" DIA. C.S.P. WITH
ANIMAL GUARD

36 TON RIP-RAP

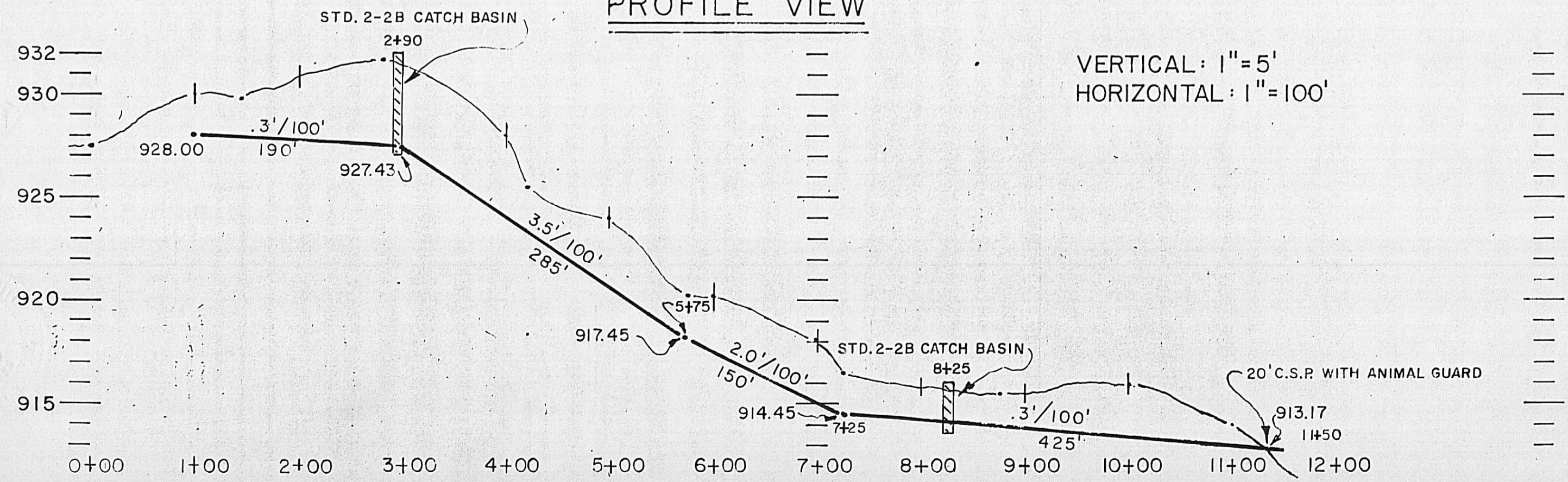
IMPROVEMENTS PLACED NOVEMBER
OF 1984



SCALE: 1"=100'

PLAN VIEW

PROFILE VIEW



VERTICAL: 1"=5'
HORIZONTAL: 1"=100'

PLAN BY:
BABB ENGINEERING & SURVEYING
11 EAST 1st STREET
LONDON, OHIO 43140
Neil Babb
NEIL BABB P.E. 36205
9 Dec 1981