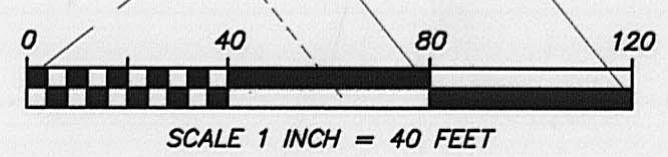
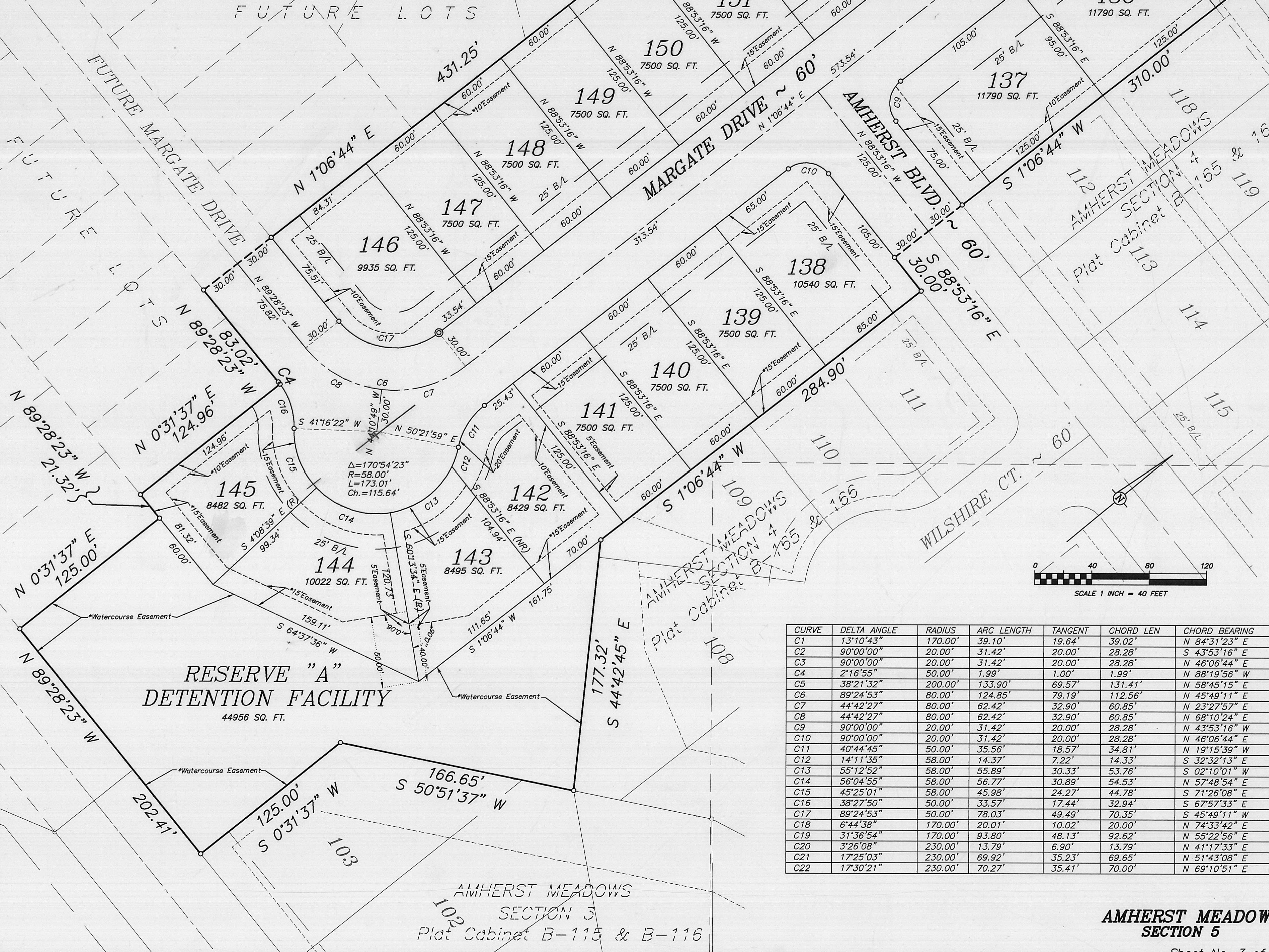


FUTURE LOTS



CURVE	DELTA ANGLE	RADIUS	ARC LENGTH	TANGENT	CHORD LEN	CHORD BEARING
C1	13°10'43"	170.00'	39.10'	19.64'	39.02'	N 84°31'23" E
C2	90°00'00"	20.00'	31.42'	20.00'	28.28'	S 43°53'16" E
C3	90°00'00"	20.00'	31.42'	20.00'	28.28'	N 46°06'44" E
C4	2°16'55"	50.00'	1.99'	1.00'	1.99'	N 88°19'56" W
C5	38°21'32"	200.00'	133.90'	69.57'	131.41'	N 58°45'15" E
C6	89°24'53"	80.00'	124.85'	79.19'	112.56'	N 45°49'11" E
C7	44°42'27"	80.00'	62.42'	32.90'	60.85'	N 23°27'57" E
C8	44°42'27"	80.00'	62.42'	32.90'	60.85'	N 68°10'24" E
C9	90°00'00"	20.00'	31.42'	20.00'	28.28'	N 43°53'16" W
C10	90°00'00"	20.00'	31.42'	20.00'	28.28'	N 46°06'44" E
C11	40°44'45"	50.00'	35.56'	18.57'	34.81'	N 19°15'39" W
C12	14°11'35"	58.00'	14.37'	7.22'	14.33'	S 32°32'13" E
C13	55°12'52"	58.00'	55.89'	30.33'	53.76'	S 02°10'01" W
C14	56°04'55"	58.00'	56.77'	30.89'	54.53'	N 57°48'54" E
C15	45°25'01"	58.00'	45.98'	24.27'	44.78'	S 71°26'08" E
C16	38°27'50"	50.00'	33.57'	17.44'	32.94'	S 67°57'33" E
C17	89°24'53"	50.00'	78.03'	49.49'	70.35'	S 45°49'11" W
C18	6°44'38"	170.00'	20.01'	10.02'	20.00'	N 74°33'42" E
C19	31°36'54"	170.00'	93.80'	48.13'	92.62'	N 55°22'56" E
C20	3°26'08"	230.00'	13.79'	6.90'	13.79'	N 41°17'33" E
C21	17°25'03"	230.00'	69.92'	35.23'	69.65'	N 51°43'08" E
C22	17°30'21"	230.00'	70.27'	35.41'	70.00'	N 69°10'51" E

AMHERST MEADOWS SECTION 5