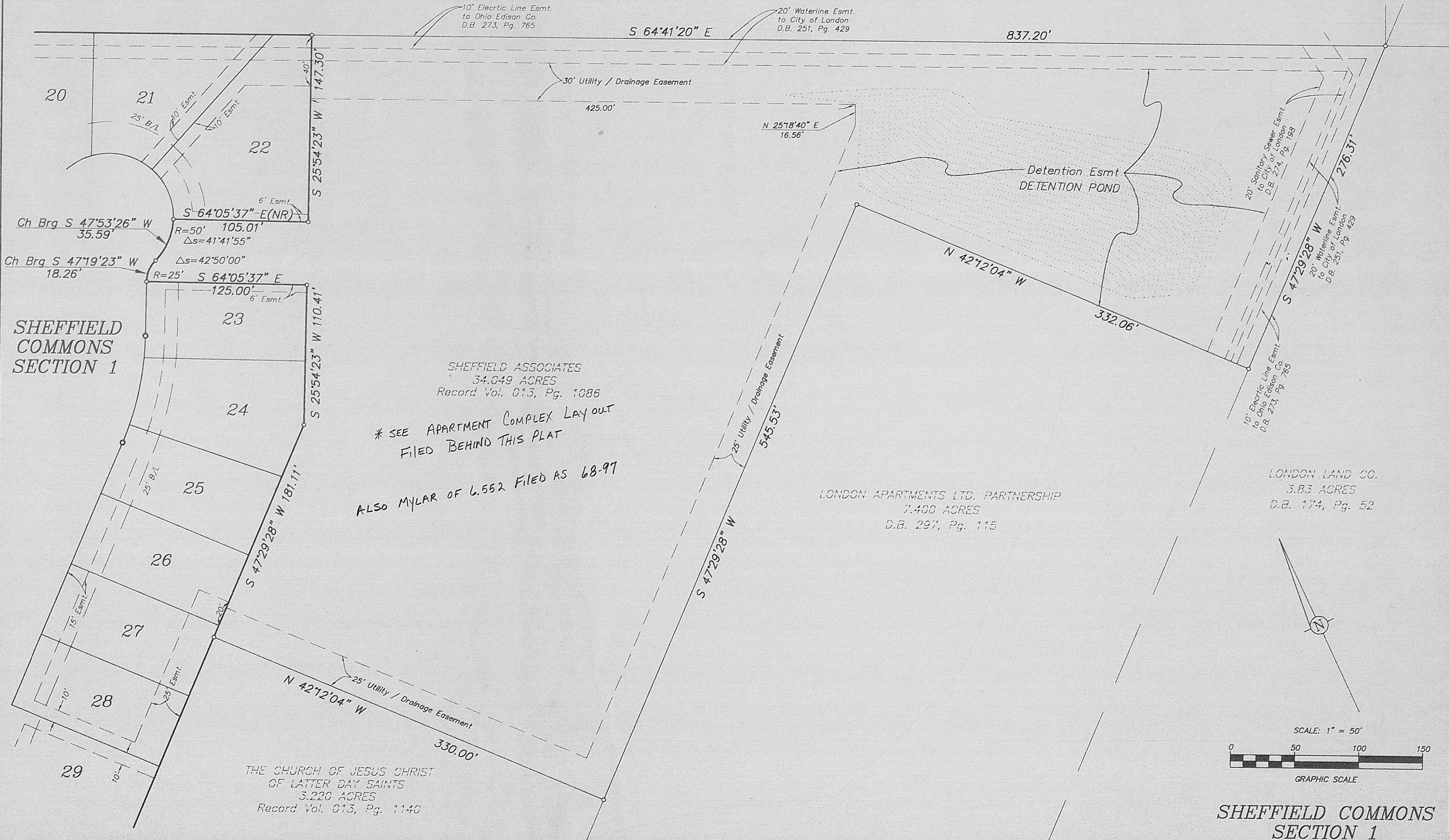




# SHEFFIELD COMMONS SECTION 1

CARMEN SCOTT  
14.317 ACRES  
D.B. 294, Pg. 197



**SHEFFIELD COMMONS SECTION 1**

SHEFFIELD ASSOCIATES  
34.049 ACRES  
Record Vol. 013, Pg. 1086

\* SEE APARTMENT COMPLEX LAYOUT  
FILED BEHIND THIS PLAT

ALSO MYLAR OF 6.552 FILED AS 68-97

LONDON APARTMENTS LTD. PARTNERSHIP  
7.400 ACRES  
D.B. 297, Pg. 115

LONDON LAND CO.  
3.83 ACRES  
D.B. 174, Pg. 52

THE CHURCH OF JESUS CHRIST  
OF LATTER DAY SAINTS  
3.220 ACRES  
Record Vol. 013, Pg. 1140

