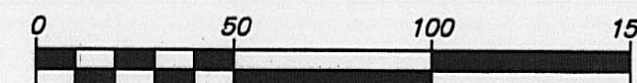


MTB Corp.
509.66 Acres
O.R. 10, Pg. 1057

SHEFFIELD COMMONS
SECTION III

CURVE	RADIUS	DELTA ANGLE	CHORD LENGTH	CHORD BEARING
C1	100.00'	37°35'56"	64.45'	S 82°53'35" E
C2	20.00'	90°00'00"	28.28'	S 33°18'27" W
C3	20.00'	90°00'00"	28.28'	S 56°41'33" E
C4	20.00'	90°00'00"	28.28'	N 56°41'33" W
C5	130.00'	22°12'48"	50.09'	S 89°24'51" W
C6	130.00'	15°23'08"	34.80'	N 71°47'11" W
C7	70.00'	37°35'56"	45.12'	S82°53'35" E
C8	20.00'	90°00'00"	28.28'	N 33°18'27" E

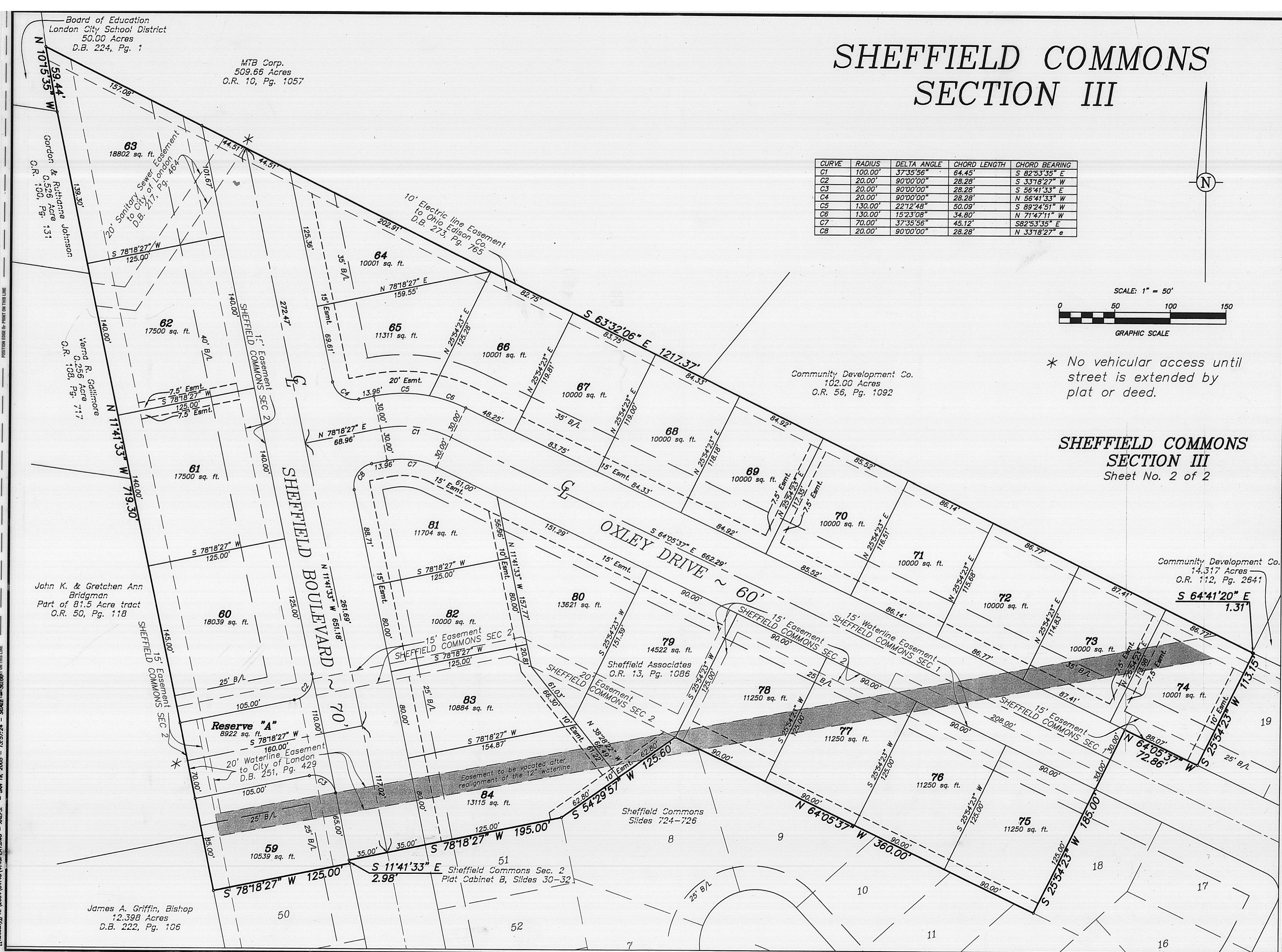
SCALE: 1" = 50'



GRAPHIC SCALE

* No vehicular access until street is extended by plat or deed.

SHEFFIELD COMMONS
SECTION III
Sheet No. 2 of 2

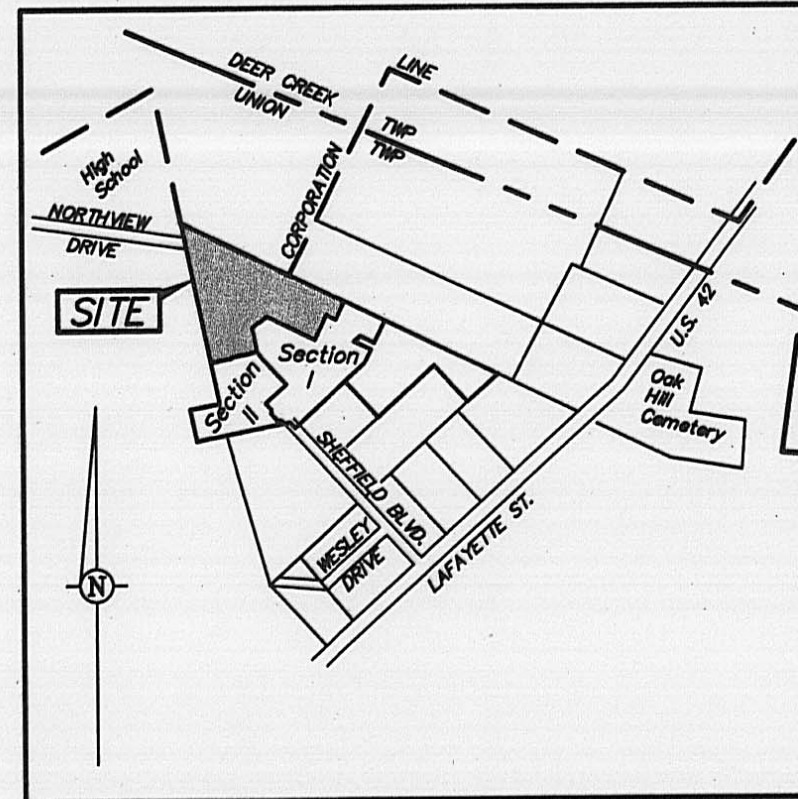


SHEFFIELD COMMONS SECTION III

Situated in the State of Ohio, County of Madison, City of London, being part of Virginia Military Survey No. 5802 and containing 9.480 acres of land, more or less, being all out of that original 34.049 acre tract of land conveyed to Sheffield Associates of record in Record Volume 013, Page 1086, Recorder's Office, Madison County Ohio.

The undersigned, P. Brent Wrightsel, President of Vision Development, managing partner of Sheffield Associates, owner of the lands platted herein, being duly authorized in the premises, does hereby certify that this plat correctly represents his "SHEFFIELD COMMONS SECTION III", a subdivision of Lots Nos. 59 through 84 inclusive, and Reserve "A", and does hereby accept this plat of same and dedicates to public use as such all or part of Sheffield Boulevard and Oxley Drive hereon and not heretofore shown dedicated.

Easements are reserved where indicated on the plat for the construction, operation and maintenance of all public and private utilities, and the cable television industry, both above and beneath the surface of the ground and, where necessary, are for the construction, operation and maintenance of service connections to all adjacent lots and lands and for storm water drainage.



LOCATION MAP
NO SCALE

Approved this 31st day of Jan, 2005.

Elmer Olsen
Planning Commission Chairman
City of London

Approved this 25th day of Jan, 2005.

David G. Eads
Mayor, City of London

Approved this 25th day of Jan, 2005.

Stephen S. Hume
Safety Service Director
City of London

Approved and accepted this _____ day of _____, 2005 by Ordinance No. _____ wherein Sheffield Boulevard and Oxley Drive dedicated hereon are accepted as such by the Council of the City of London, Ohio.

Village Clerk, City of London, Ohio

In witness whereof, P. Brent Wrightsel, President of Vision Development, managing partner of Sheffield Associates, has hereunto set his hand this 23 day of FEBRUARY, 2005.

WITNESSES:

SHEFFIELD ASSOCIATES
VISION DEVELOPMENT, INC.
Managing Partner

Betty J. Stidham

BY

P. Brent Wrightsel
P. Brent Wrightsel, President

William M. Stidham

State of Ohio > S.S.

Before me, a Notary Public in and for said State, personally appeared P. Brent Wrightsel, President of Vision Development, managing partner of Sheffield Associates, who acknowledged the signing of the foregoing instrument to be his free and voluntary act and deed for the uses and purposes therein expressed.

In Witness Whereof, I have hereunto set my hand and affixed my official seal this 23 day of FEBRUARY, 2005.

My Commission Expires: MAY 3, 2017

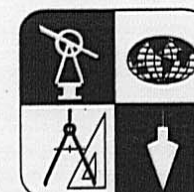
William M. Stidham
Notary Public, State of Ohio

PREPARED BY:

Geo-Graphics Inc.

Land Surveying & Civil Engineering

3331 Livingston Ave Road Columbus, Ohio 43227
614-231-2016



We do hereby certify that we have surveyed the above premises and prepared the attached plat and that said plat is correct. All measurements are shown in feet and decimal parts thereof. Dimensions along curves are chord measurements unless otherwise indicated. Iron pipes are indicated by the following symbol: —. Permanent monuments to be set upon completion of construction necessary to the improvement of this land are indicated by the following symbol: —.

The bearings shown on the plat are based on the northwesterly projection of Sheffield Boulevard which was assigned a bearing of N 42°12'04" W as shown on the record plat of Sheffield Subdivision as shown for record in slide 591 of the public records of the Madison County Recorder's Office, Madison County, Ohio.

Robert E. Blackburn
By

Robert E. Blackburn — Ohio Surveyor No. 6305



Transferred this 23rd day of February, 2005.

Jim Williamson by E. Crawford
Auditor, Madison County, Ohio

Filed for record this 28th day of Feb, 2005, at 12:18 P.M.

Fee \$ 43.60 File No. 05-1229 Charles E. Reed
Recorder, Madison County, Ohio

Recorded this 28th day of Feb, 2005, on Slides B-292-293.

Rachel A. Kimbler
Deputy Recorder, Madison County, Ohio

200500001229
Filed for Record in
MADISON COUNTY, OHIO
CHARLES E REED
02-28-2005 At 12:18 PM.
PLAT 43.60

DESCRIPTION ACCEPTABLE MADISON COUNTY ENGINEER
DATE 2-23-05 BY VC
ACRAGE 9.484 Acres 9.48
(lots 59-84, Res A, Oxley Drive
+ Sheffield Blvd.)

31-00092 CUD

SHEFFIELD COMMONS
SECTION III
Sheet No. 1 of 2



WILLIAM M. STIDHAM
NOTARY PUBLIC, STATE OF OHIO
MY COMMISSION EXPIRES MAY 3, 2017