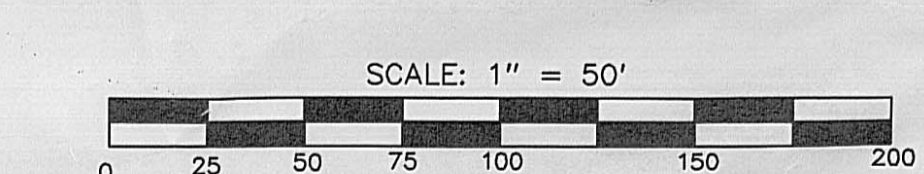
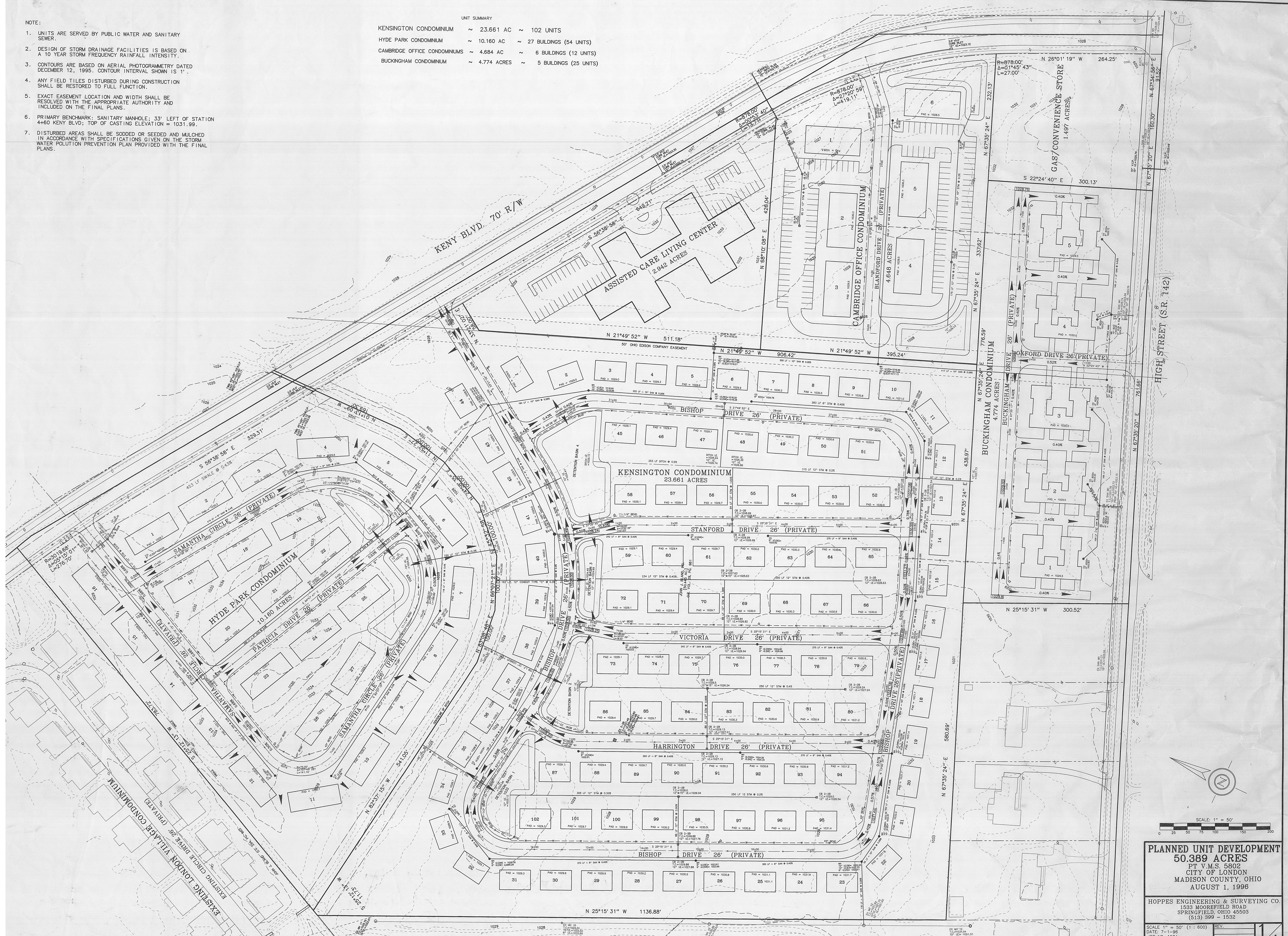


NOTE:

1. UNITS ARE SERVED BY PUBLIC WATER AND SANITARY SEWER.
2. DESIGN OF STORM DRAINAGE FACILITIES IS BASED ON A 10 YEAR STORM FREQUENCY RAINFALL INTENSITY.
3. CONTOURS ARE BASED ON AERIAL PHOTOGRAMMETRY DATED DECEMBER 12, 1995. CONTOUR INTERVAL SHOWN IS 1'.
4. ANY FIELD TILES DISTURBED DURING CONSTRUCTION SHALL BE RESTORED TO FULL FUNCTION.
5. EXACT EASEMENT LOCATION AND WIDTH SHALL BE RESOLVED WITH THE APPROPRIATE AUTHORITY AND INCLUDED ON THE FINAL PLANS.
6. PRIMARY BENCHMARK: SANITARY MANHOLE, 33' LEFT OF STATION 4+60 KENY BLVD; TOP OF CASTING ELEVATION = 1031.99.
7. DISTURBED AREAS SHALL BE SODED OR SEEDED AND MULCHED IN ACCORDANCE WITH SPECIFICATIONS GIVEN ON THE STORM WATER POLLUTION PREVENTION PLAN PROVIDED WITH THE FINAL PLANS.

UNIT SUMMARY

KENSINGTON CONDOMINIUM	~ 23.661 AC	~ 102 UNITS
HYDE PARK CONDOMINIUM	~ 10.160 AC	~ 27 BUILDINGS (54 UNITS)
CAMBRIDGE OFFICE CONDOMINIUMS	~ 4.684 AC	~ 6 BUILDINGS (12 UNITS)
BUCKINGHAM CONDOMINIUM	~ 4.774 ACRES	~ 5 BUILDINGS (25 UNITS)



**PLANNED UNIT DEVELOPMENT**  
**50.389 ACRES**  
 PT V.M.S. 5802  
 CITY OF LONDON  
 MADISON COUNTY, OHIO  
 AUGUST 1, 1996

HOPPES ENGINEERING & SURVEYING CO.  
 1533 MOOREFIELD ROAD  
 SPRINGFIELD, OHIO 45503  
 (513) 399-1532

SCALE 1" = 50' (1:500) REV. 1/1  
 DATE: 7-1-96  
 JOB NO: 1034  
 COMP: LONDON MASTERLUX  
 DRAWN BY: JAB