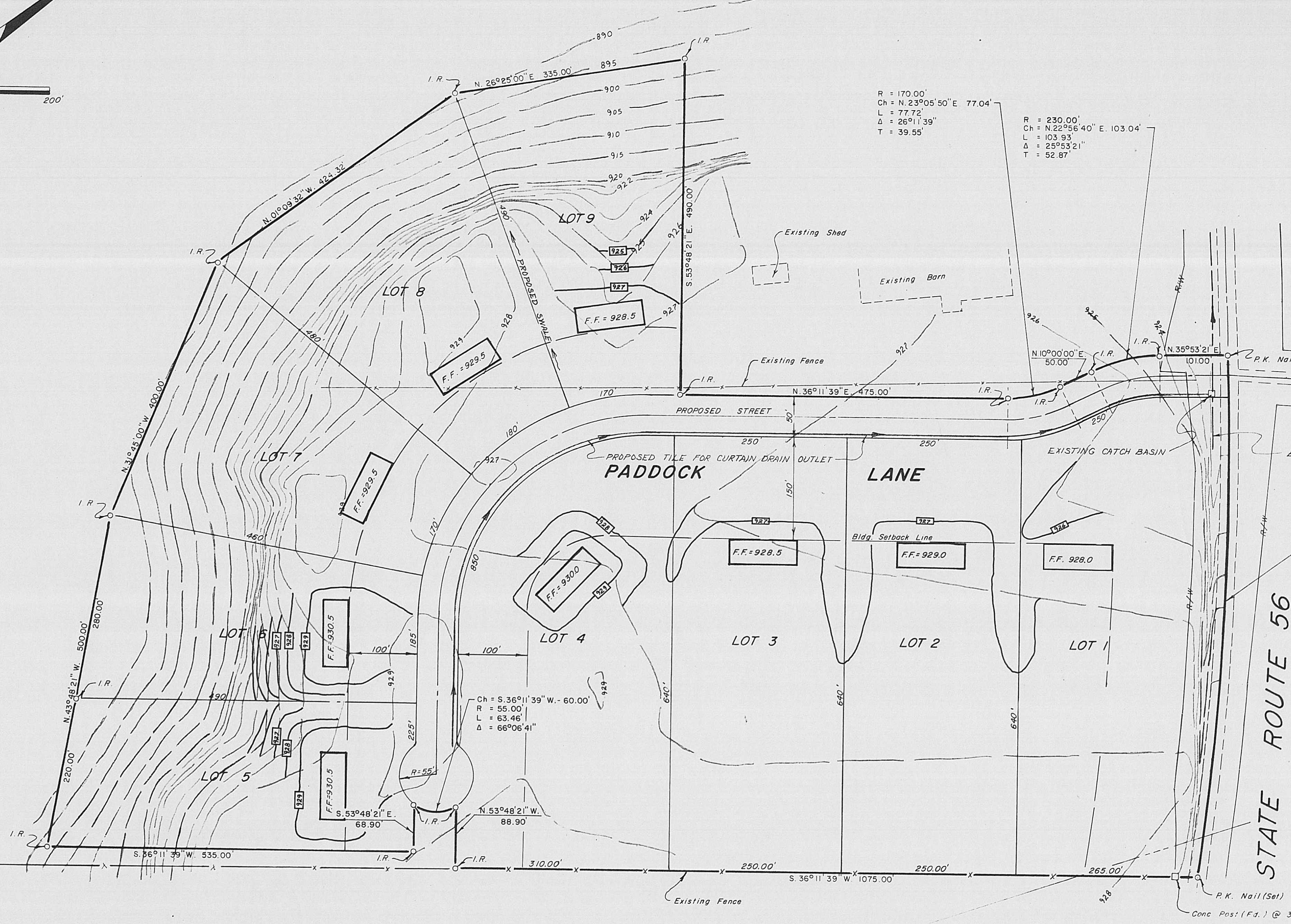
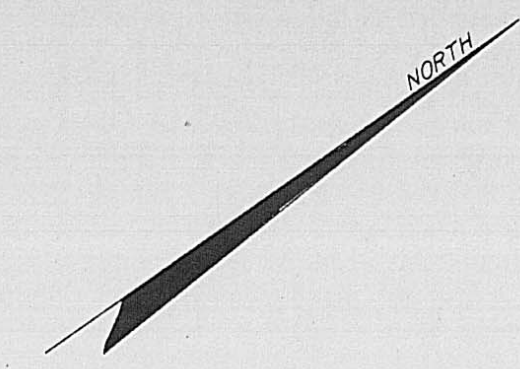


Scale: 1" = 100'

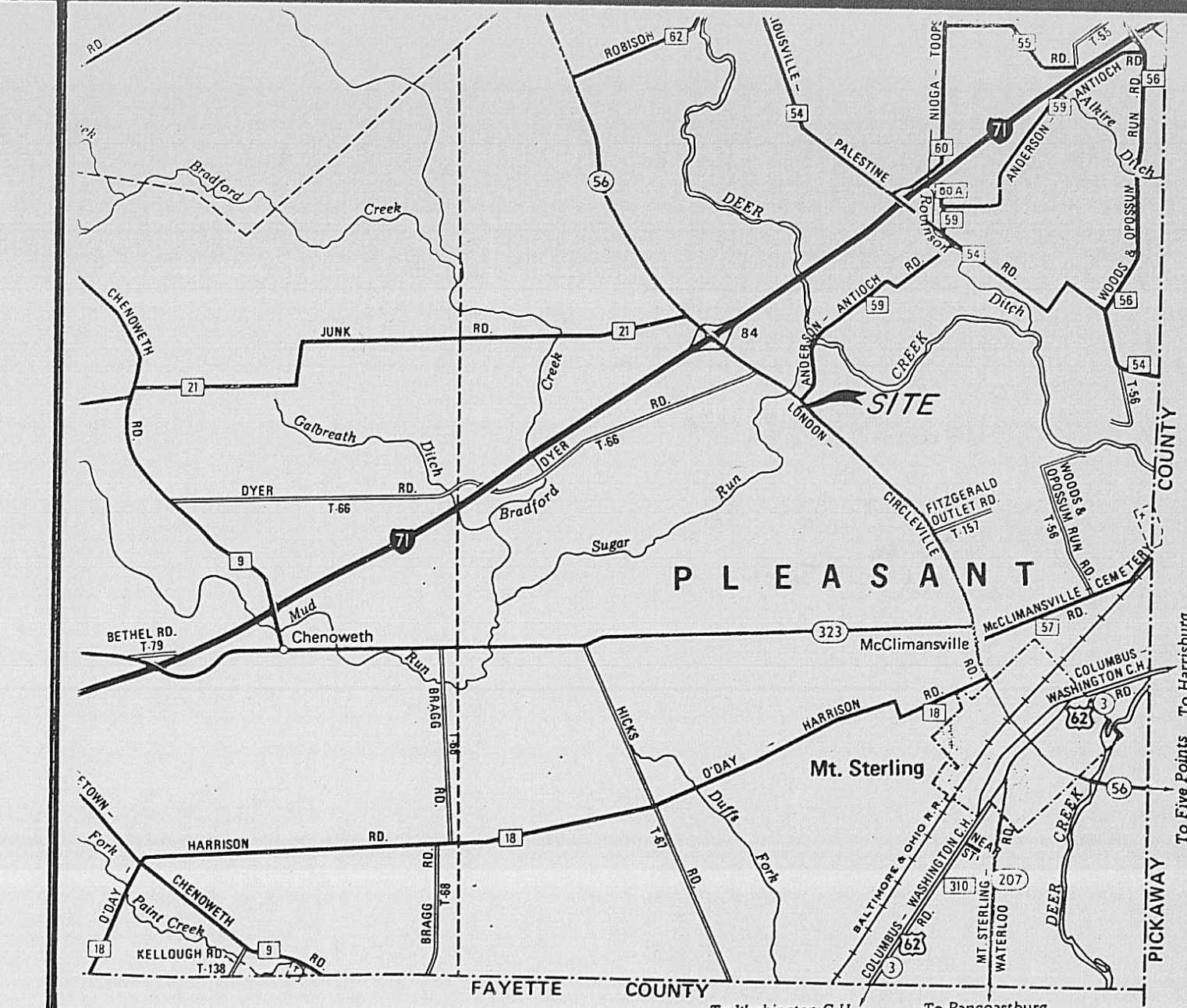


R = 170.00'  
 Ch = N 23°05'50" E 77.04'  
 L = 77.72'  
 Δ = 26°11'39"  
 T = 39.55'

R = 230.00'  
 Ch = N 22°46'40" E 103.04'  
 L = 103.93'  
 Δ = 25°53'21"  
 T = 52.87'

Ch = S 36°11'39" W 60.00'  
 R = 55.00'  
 L = 63.46'  
 Δ = 66°06'41"

⊕ CURVE DATA  
 Ch = S 51°31'45" E 771.76'  
 R = 7901.62'  
 Δ = 05°35'54"  
 T = 386.34'  
 L = 772.06'



VICINITY MAP

ANDERSON-ANTIOCH RD.  
 EXISTING STORM SEWER

STATE ROUTE 56

DEED REFERENCE  
 ROBERT B & MARY LOU WEBBER  
 D.B. 252, PG. 564  
 98.127 Ac.

- NOTES
1. REFERENCE BEARING: S 36°11'39" W S E Line of orig 98.127 Ac. tract as per D.B. 252, PG. 564
  2. OCCUPATION: Roadway, monumentation, & fences (Fd.) as shown.
  3. All monumentation is in good condition.
  4. I.R. = 5/8" Iron Rod (Set) w/1" dia. plastic cap stamped "RLI 6106."

LEGEND

--- 930 --- Existing Contour  
 --- 1370 --- Proposed Contour

MARTHA BRICKER  
 D.B. 223, PG. 132  
 Parcel 2  
 103.83 Ac.

V.M.S. 4208  
 V.M.S. 7883

PLAT AREA = 32.3563 AC.

SUGAR RUN FARMS SUBDIVISION  
 GRADING PLAN

PLEASANT TOWNSHIP  
 MADISON COUNTY, OHIO  
 V.M.S. 4208 & 7883

Gale L. Helms & Assoc., Inc.  
 Consulting Engineers & Surveyors  
 222 N. OAKLAND AVE.  
 WASHINGTON C.H., OHIO 43080

DATE: \_\_\_\_\_  
 SHEET No.  
 12 of 12  
 FILE No. 3348