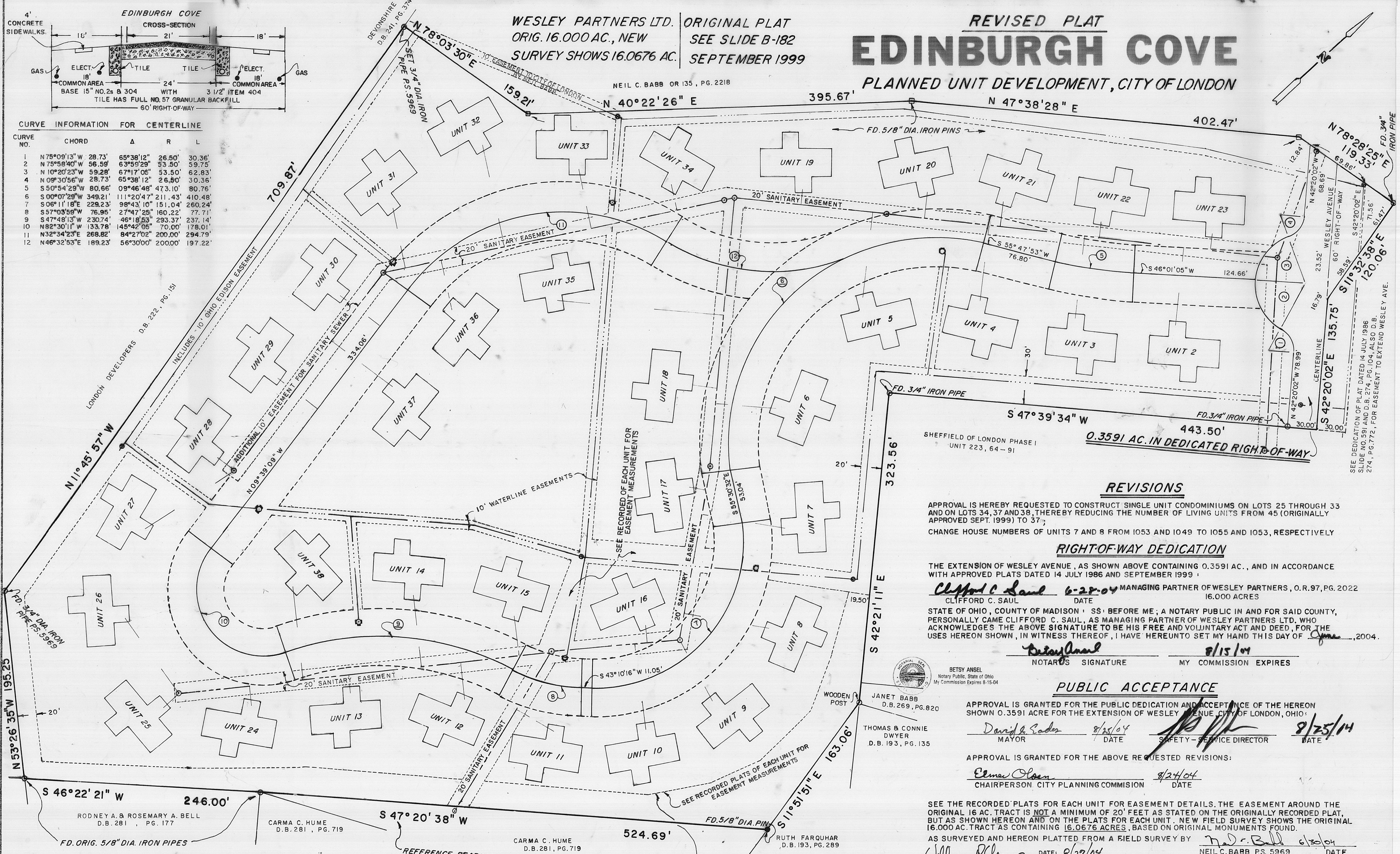


WESLEY PARTNERS LTD. ORIGINAL PLAT
 ORIG. 16.000 AC., NEW SEE SLIDE B-182
 SURVEY SHOWS 16.0676 AC. SEPTEMBER 1999

REVISED PLAT
EDINBURGH COVE
 PLANNED UNIT DEVELOPMENT, CITY OF LONDON

CURVE INFORMATION FOR CENTERLINE

CURVE NO.	CHORD	Δ	R	L
1	N75°09'13"W 28.73'	65°38'12"	26.50'	30.36'
2	N75°58'40"W 56.59'	63°59'29"	53.50'	59.75'
3	N10°20'23"W 59.28'	67°17'05"	53.50'	62.83'
4	N09°30'56"W 28.73'	65°38'12"	26.50'	30.36'
5	S50°54'29"W 80.66'	09°46'48"	473.10'	80.76'
6	S00°07'29"W 349.21'	111°20'47"	211.43'	410.48'
7	S06°11'18"E 229.23'	98°43'10"	151.04'	260.24'
8	S57°03'59"W 76.95'	27°47'25"	160.22'	77.71'
9	S47°48'13"W 230.74'	46°18'53"	293.37'	237.14'
10	N82°30'11"W 133.78'	145°42'05"	70.00'	178.01'
11	N32°34'23"E 268.82'	84°27'02"	200.00'	294.79'
12	N46°32'53"E 189.23'	56°30'00"	200.00'	197.22'



SHEFFIELD OF LONDON PHASE I
 UNIT 223, 64 - 91
 0.3591 AC. IN DEDICATED RIGHT-OF-WAY

REVISIONS

APPROVAL IS HEREBY REQUESTED TO CONSTRUCT SINGLE UNIT CONDOMINIUMS ON LOTS 25 THROUGH 33 AND ON LOTS 34, 37 AND 38, THEREBY REDUCING THE NUMBER OF LIVING UNITS FROM 45 (ORIGINALLY APPROVED SEPT. 1999) TO 37;
 CHANGE HOUSE NUMBERS OF UNITS 7 AND 8 FROM 1053 AND 1049 TO 1055 AND 1053, RESPECTIVELY

RIGHT-OF-WAY DEDICATION

THE EXTENSION OF WESLEY AVENUE, AS SHOWN ABOVE CONTAINING 0.3591 AC., AND IN ACCORDANCE WITH APPROVED PLATS DATED 14 JULY 1986 AND SEPTEMBER 1999:

Clifford C. Saul 6-22-04 MANAGING PARTNER OF WESLEY PARTNERS, O.R. 97, PG. 2022
 CLIFFORD C. SAUL DATE 16.000 ACRES

STATE OF OHIO, COUNTY OF MADISON: SS: BEFORE ME; A NOTARY PUBLIC IN AND FOR SAID COUNTY, PERSONALLY CAME CLIFFORD C. SAUL, AS MANAGING PARTNER OF WESLEY PARTNERS LTD. WHO ACKNOWLEDGES THE ABOVE SIGNATURE TO BE HIS FREE AND VOLUNTARY ACT AND DEED, FOR THE USES HEREON SHOWN, IN WITNESS WHEREOF, I HAVE HEREUNTO SET MY HAND THIS DAY OF *June*, 2004.

Betsy Ansel 8/15/04
 NOTARY'S SIGNATURE MY COMMISSION EXPIRES

PUBLIC ACCEPTANCE

APPROVAL IS GRANTED FOR THE PUBLIC DEDICATION AND ACCEPTANCE OF THE HEREON SHOWN 0.3591 ACRE FOR THE EXTENSION OF WESLEY AVENUE, CITY OF LONDON, OHIO:

David E. Sader 8/25/04
 MAYOR DATE SAFETY - SERVICE DIRECTOR DATE

APPROVAL IS GRANTED FOR THE ABOVE REQUESTED REVISIONS:

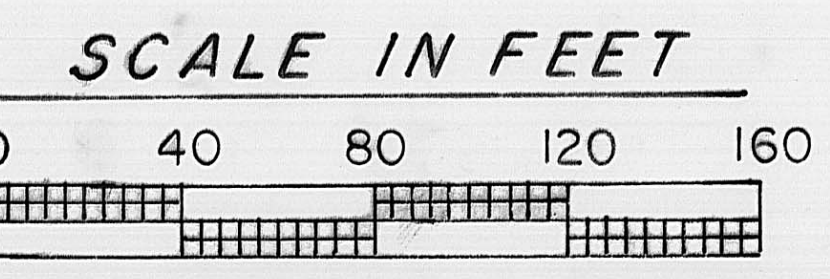
Elmer Olsen 8/24/04
 CHAIRPERSON CITY PLANNING COMMISSION DATE

SEE THE RECORDED PLATS FOR EACH UNIT FOR EASEMENT DETAILS. THE EASEMENT AROUND THE ORIGINAL 16 AC. TRACT IS NOT A MINIMUM OF 20' FEET AS STATED ON THE ORIGINALLY RECORDED PLAT, BUT AS SHOWN HEREON AND ON THE PLATS FOR EACH UNIT. THE NEW FIELD SURVEY SHOWS THE ORIGINAL 16.000 AC. TRACT AS CONTAINING 16.0676 ACRES, BASED ON ORIGINAL MONUMENTS FOUND.

AS SURVEYED AND HEREON PLATTED FROM A FIELD SURVEY BY *Neil C. Babb* 6/30/04
 NEIL C. BABB P.S. 5969 DATE

LEGEND

- PUBLIC 8" DIA. SANITARY
- SEWER WITH MANHOLES
- WATER PIPE WITH FIREHYDRANTS, SHUT-OFF VALVES, 10' EASE.
- 20' EASEMENT



EASEMENTS SHOWN ARE FOR THE EXTENSION OF UTILITIES FOR THE BENEFIT OF THE PROPERTY OWNER'S ASSOCIATION OF EDINBURGH COVE