

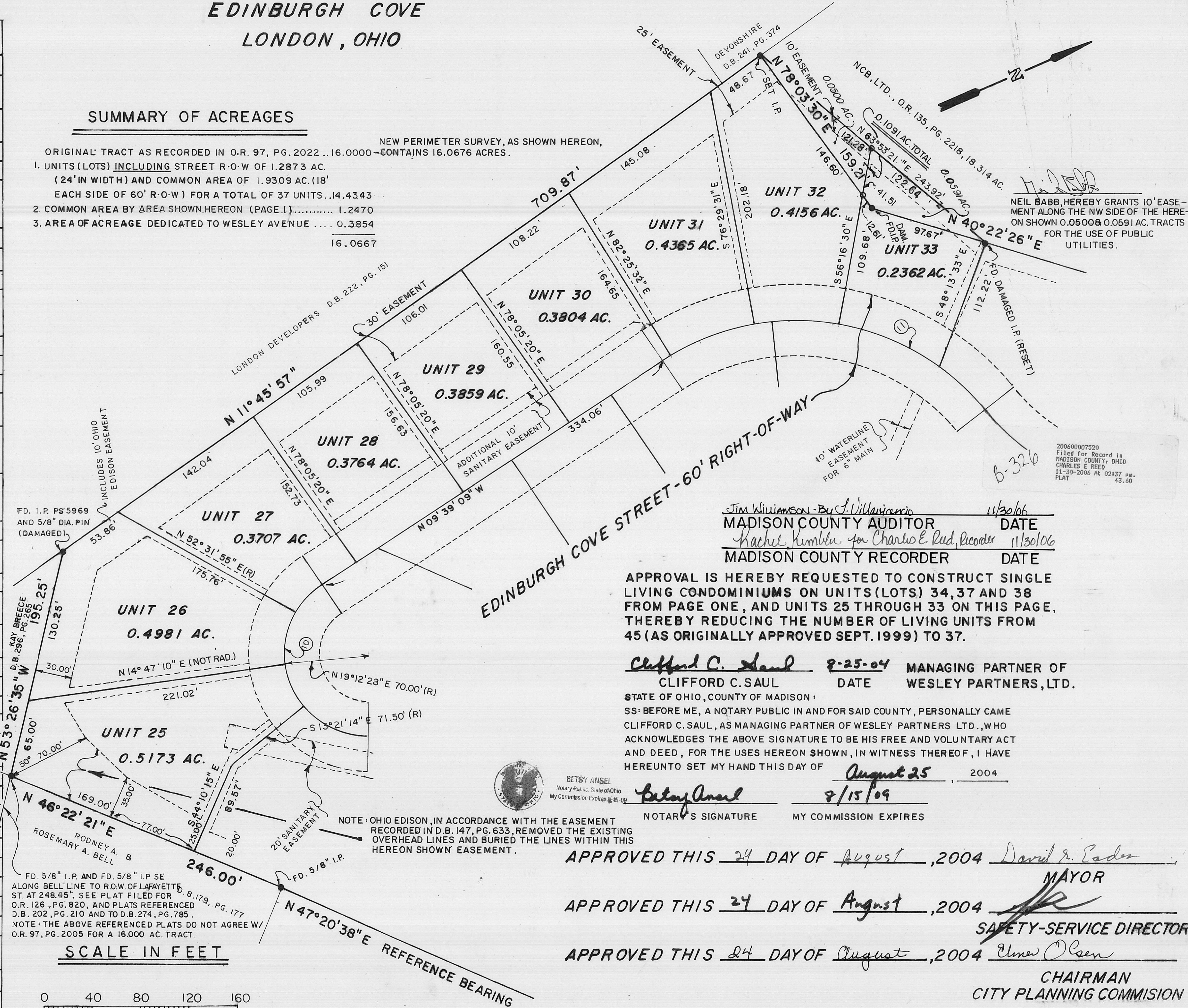
INFORMATION FOR UNITS

CONTINUATION OF THE COMPOSITE FOR INDIVIDUALLY RECORDED UNITS 25 → 33 EDINBURGH COVE LONDON, OHIO

SUMMARY OF ACREAGES

NEW PERIMETER SURVEY, AS SHOWN HEREON, ORIGINAL TRACT AS RECORDED IN O.R. 97, PG. 2022...16.0000—CONTAINS 16.0676 ACRES.
 1. UNITS (LOTS) INCLUDING STREET R-O-W OF 1.2873 AC. (24' IN WIDTH) AND COMMON AREA OF 1.9309 AC. (18' EACH SIDE OF 60' R-O-W) FOR A TOTAL OF 37 UNITS...14.4343
 2. COMMON AREA BY AREA SHOWN HEREON (PAGE 1)..... 1.2470
 3. AREA OF ACREAGE DEDICATED TO WESLEY AVENUE 0.3854
 16.0667

UNIT	DESCRIPTION OF FRONTAGE	ACREAGE	HOUSE NO.
2	N 46° 01' 05" E 124.66'	0.5324	1073
3	N 55° 47' 53" E 12.02'; CH = N 50° 54' 29" E 80.66'; Δ = 09° 46' 48", R = 473.10', L = 80.75'	0.3627	1071
4	CH = N 50° 24' 46" E 40.18', Δ = 10° 54' 14", R = 211.43', L = 40.24'; N 55° 47' 53" E 64.78'	0.3583	1065
5	CH = N 18° 35' 59" E 187.32', Δ = 52° 35' 20", R = 211.43', L = 194.06'	0.4240	1061
6	CH = N 28° 45' 09" W 151.90', Δ = 42° 06' 14", R = 211.43', L = 155.37'	0.3927	1057
7	CH = N 46° 14' 45" W 48.83', Δ = 18° 36' 17", R = 151.04', L = 49.04'; N 55° 30' 32" W 53.04'; CH = N 52° 38' 00" W 21.20', Δ = 05° 44' 59", R = 211.43', L = 21.22'	0.3786	1055
8	CH = N 22° 31' 56" W 75.18', Δ = 28° 49' 22", R = 151.04', L = 75.98'	0.4157	1053
9	CH = N 04° 29' 25" E 65.95', Δ = 25° 13' 19", R = 151.04', L = 66.49'	0.4389	1045
10	CH = N 30° 08' 10" E 68.13', Δ = 26° 04' 12", R = 151.04', L = 68.72'	0.3519	1043
11	CH = N 70° 50' 28" E 1.23', Δ = 00° 14' 26", R = 293.37', L = 1.23'; CH = N 57° 03' 59" E 76.95', Δ = 27° 47' 25", R = 160.22', L = 77.71'; N 43° 10' 16" E 11.05'	0.3050	1041
12	CH = N 59° 05' 30" E 118.28', Δ = 23° 15' 30", R = 293.37', L = 119.09'	0.3902	1039
13	CH = N 36° 03' 16" E 116.05', Δ = 22° 48' 57", R = 293.37', L = 116.83'	0.3874	1037
14	CH = S 47° 49' 26" W 96.21', Δ = 18° 52' 28", R = 293.37', L = 96.64'	0.3228	1038
15	CH = S 66° 19' 11" W 25.77', Δ = 09° 13' 25", R = 160.22', L = 25.79'; CH = S 64° 07' 11" W 69.97', Δ = 13° 41' 50", R = 293.37', L = 70.13'	0.3171	1042
16	CH = S 03° 23' 02" W 193.31', Δ = 79° 34' 38", R = 151.04', L = 209.78'; S 43° 10' 36" W 11.05'; CH = S 52° 27' 02" W 51.68', Δ = 18° 33' 43", R = 160.22', L = 51.91'	0.4616	1046
17	CH = S 50° 46' 23" E 36.03', Δ = 09° 46' 32", R = 211.43', L = 36.07'; S 55° 30' 32" E 53.04'; CH = S 45° 58' 14" E 50.22', Δ = 19° 08' 32", R = 151.04', L = 50.46'	0.4583	1050
18	CH = S 32° 21' 52" E 97.56', Δ = 26° 40' 38", R = 211.43', L = 98.44'	0.2754	1054
19	CH = N 36° 25' 18" E 124.43', Δ = 36° 14' 50", R = 200.00', L = 126.53'; CH = N 20° 47' 50" E 18.45', Δ = 05° 00' 00", R = 211.43', L = 18.45'	0.4809	1058
20	CH = S 36° 04' 29" W 93.52', Δ = 25° 33' 12", R = 211.43', L = 94.30'	0.3762	1062
21	S 55° 47' 53" W 68.31'; CH = S 52° 19' 28" W 25.62', Δ = 06° 56' 50", R = 211.43', L = 25.64'	0.3151	1066
22	S 46° 01' 05" W 22.70'; CH = S 50° 54' 29" W 80.66', Δ = 09° 46' 48", R = 473.10', L = 80.76'; S 55° 47' 53" W 8.49'	0.3632	1070
23	S 46° 01' 05" W 101.96'	0.4561	1074
24	CH = N 50° 38' 17" E 61.37', Δ = 52° 00' 00", R = 70.00', L = 63.53'	0.3573	1035
25	CH = S 87° 04' 26" E 39.28', Δ = 32° 33' 42", R = 70.00', L = 39.78	0.5173	1033
26	CH = S 54° 06' 47" E 40.15', Δ = 33° 19' 27", R = 70.00', L = 40.71	0.4981	1031
27	S 09° 39' 10" E 33.28'; CH = S 23° 33' 32" E 33.65', Δ = 27° 49' 02", R = 70.00', L = 33.99'	0.3707	1029
28	S 09° 39' 10" E 106.08'	0.3764	1027
29	S 09° 39' 10" E 106.08'	0.3859	1025
30	CH = S 08° 36' 15" E 7.25', Δ = 02° 04' 33", R = 200.00', L = 7.25'; S 09° 39' 10" E 88.62'	0.3804	1023
31	CH = S 02° 58' 02" W 73.18', Δ = 21° 04' 57", R = 200.00', L = 73.79'	0.4365	1021
32	CH = S 23° 37' 09" W 70.21', Δ = 20° 13' 01", R = 200.00', L = 70.57'	0.4146	1019
33	CH = S 47° 08' 58" W 92.86', Δ = 26° 50' 53", R = 200.00', L = 93.72'	0.2362	1017
34	CH = S 64° 40' 15" W 70.33', Δ = 20° 15' 10", R = 200.00', L = 70.70'	0.3735	1015
35	CH = N 45° 47' 53" E 193.92', Δ = 58° 00' 00", R = 200.00', L = 202.46'	0.4082	1024
36	N 09° 39' 09" W 50.00'; CH = N 03° 34' 23" E 91.51', Δ = 26° 27' 02", R = 200.00', L = 92.33'	0.3428	1026
37	N 09° 39' 09" W 100.00'	0.3099	1028
38	CH = S 31° 29' 58" W 70.18', Δ = 13° 44' 28", R = 293.37', L = 70.36'; CH = N 82° 30' 11" W 133.78', Δ = 145° 42' 05", R = 70.00', L = 178.01'; N 09° 39' 09" W 50.84'	0.4620	1036



Jim Williamson - By J. Villavicencio 11/30/06
 MADISON COUNTY AUDITOR DATE
 Rachel Kumbler for Charles E. Reed, Recorder 11/30/06
 MADISON COUNTY RECORDER DATE

APPROVAL IS HEREBY REQUESTED TO CONSTRUCT SINGLE LIVING CONDOMINIUMS ON UNITS (LOTS) 34, 37 AND 38 FROM PAGE ONE, AND UNITS 25 THROUGH 33 ON THIS PAGE, THEREBY REDUCING THE NUMBER OF LIVING UNITS FROM 45 (AS ORIGINALLY APPROVED SEPT. 1999) TO 37.

Clifford C. Saul 8-25-04 MANAGING PARTNER OF CLIFFORD C. SAUL DATE WESLEY PARTNERS, LTD.

STATE OF OHIO, COUNTY OF MADISON: SS: BEFORE ME, A NOTARY PUBLIC IN AND FOR SAID COUNTY, PERSONALLY CAME CLIFFORD C. SAUL, AS MANAGING PARTNER OF WESLEY PARTNERS LTD., WHO ACKNOWLEDGES THE ABOVE SIGNATURE TO BE HIS FREE AND VOLUNTARY ACT AND DEED, FOR THE USES HEREON SHOWN, IN WITNESS THEREOF, I HAVE HEREUNTO SET MY HAND THIS DAY OF August 25, 2004

Betsy Ansel 8/15/09 NOTARY'S SIGNATURE MY COMMISSION EXPIRES

APPROVED THIS 24 DAY OF August, 2004 David R. Eades MAYOR

APPROVED THIS 27 DAY OF August, 2004 SAFETY-SERVICE DIRECTOR

APPROVED THIS 24 DAY OF August, 2004 Ulmer Olsen CHAIRMAN CITY PLANNING COMMISSION