

**EDINBURGH COVE
PLANNED UNIT DEVELOPMENT**

CITY OF LONDON, OHIO.
APPROVED SEPT. 28, 1999
UNIT #2

DEED REFERENCE
WESLEY PARTNERS LTD.
O.R. 97, PG. 2055
16.000 ACRES
(3549)

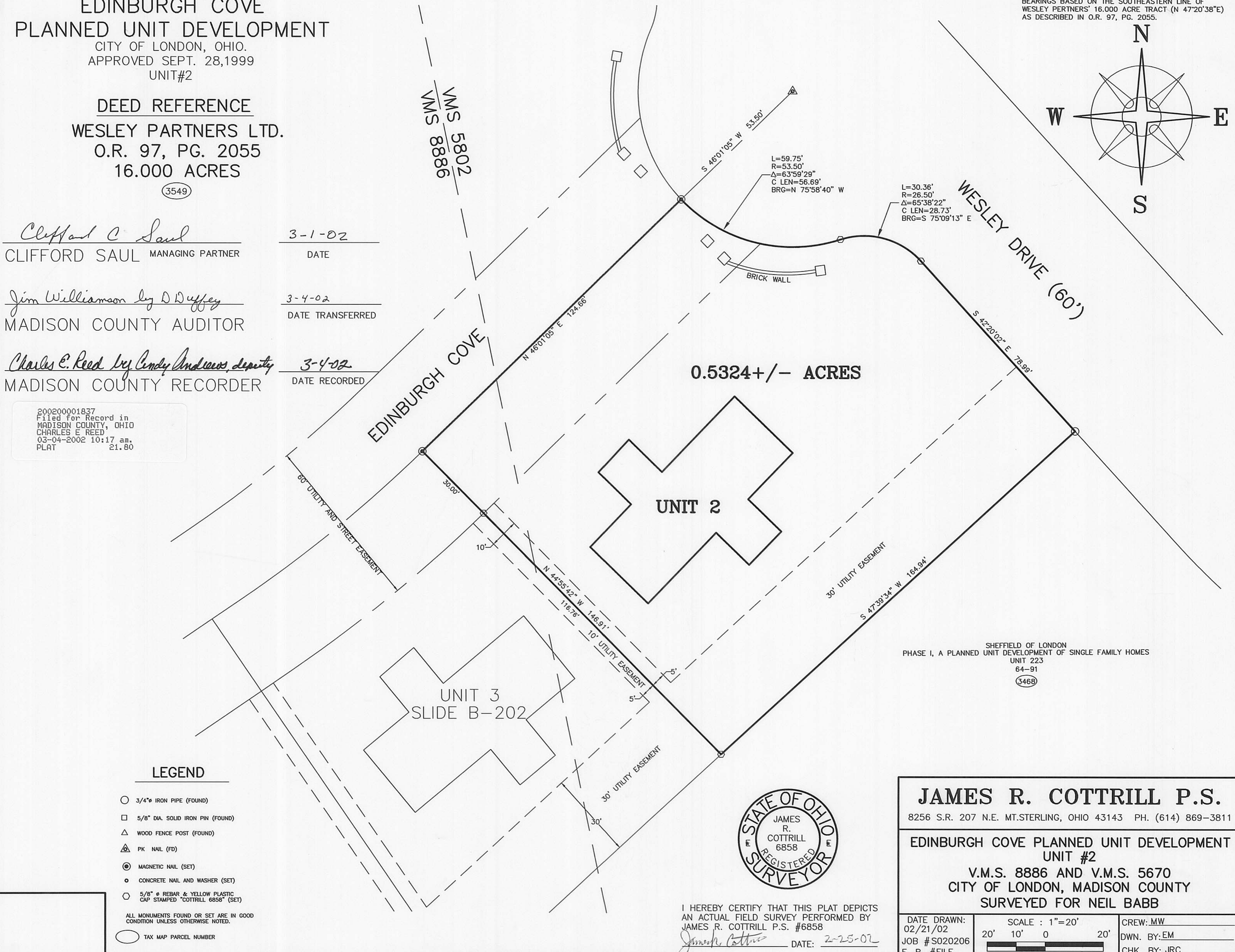
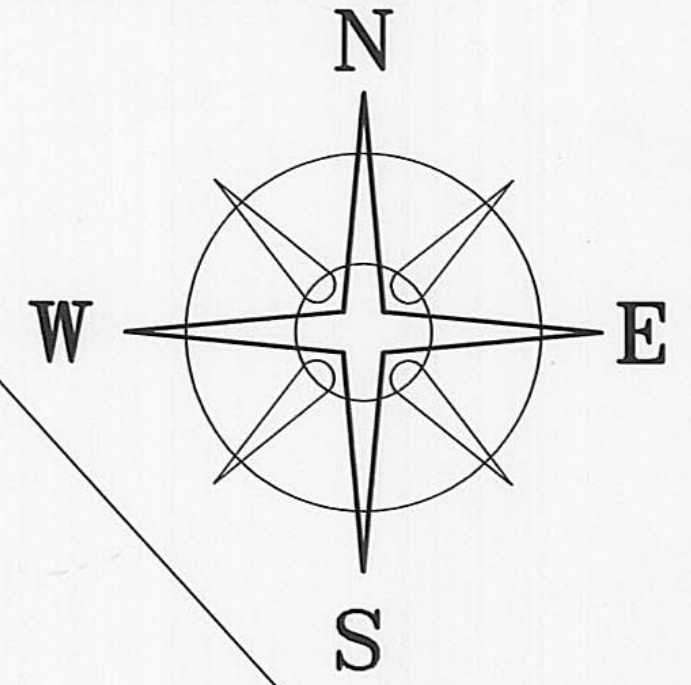
Clifford C. Saul
CLIFFORD SAUL MANAGING PARTNER
3-1-02
DATE

Jim Williamson by D. Duffey
MADISON COUNTY AUDITOR
3-4-02
DATE TRANSFERRED

Charles E. Reed by Cindy Andrews, deputy
MADISON COUNTY RECORDER
3-4-02
DATE RECORDED

20020001837
Filed for Record in
MADISON COUNTY, OHIO
CHARLES E. REED
03-04-2002 10:17 am.
PLAT 21.80

BEARINGS BASED ON THE SOUTHEASTERN LINE OF
WESLEY PARTNERS' 16,000 ACRE TRACT (N 47°20'38"E)
AS DESCRIBED IN O.R. 97, PG. 2055.



LEGEND

- 3/4" IRON PIPE (FOUND)
- 5/8" DIA. SOLID IRON PIN (FOUND)
- △ WOOD FENCE POST (FOUND)
- ▲ PK NAIL (FD)
- MAGNETIC NAIL (SET)
- CONCRETE NAIL AND WASHER (SET)
- 5/8" REBAR & YELLOW PLASTIC CAP STAMPED "COTTRILL 6858" (SET)
- ALL MONUMENTS FOUND OR SET ARE IN GOOD CONDITION UNLESS OTHERWISE NOTED.
- TAX MAP PARCEL NUMBER



I HEREBY CERTIFY THAT THIS PLAT DEPICTS
AN ACTUAL FIELD SURVEY PERFORMED BY
JAMES R. COTTRILL P.S. #6858
James R. Cottrill DATE: 2-25-02

JAMES R. COTTRILL P.S.
8256 S.R. 207 N.E. MT. STERLING, OHIO 43143 PH. (614) 869-3811

**EDINBURGH COVE PLANNED UNIT DEVELOPMENT
UNIT #2**
V.M.S. 8886 AND V.M.S. 5670
CITY OF LONDON, MADISON COUNTY
SURVEYED FOR NEIL BABB

DATE DRAWN: 02/21/02	SCALE: 1"=20' 20' 10' 0' 20'	CREW: MW
JOB # S020206		DWN. BY: EM
F. B. # FILE		CHK. BY: JRC

Clifford C. Saul
CLIFFORD SAUL MANAGING PARTNER
8-8-02
DATE

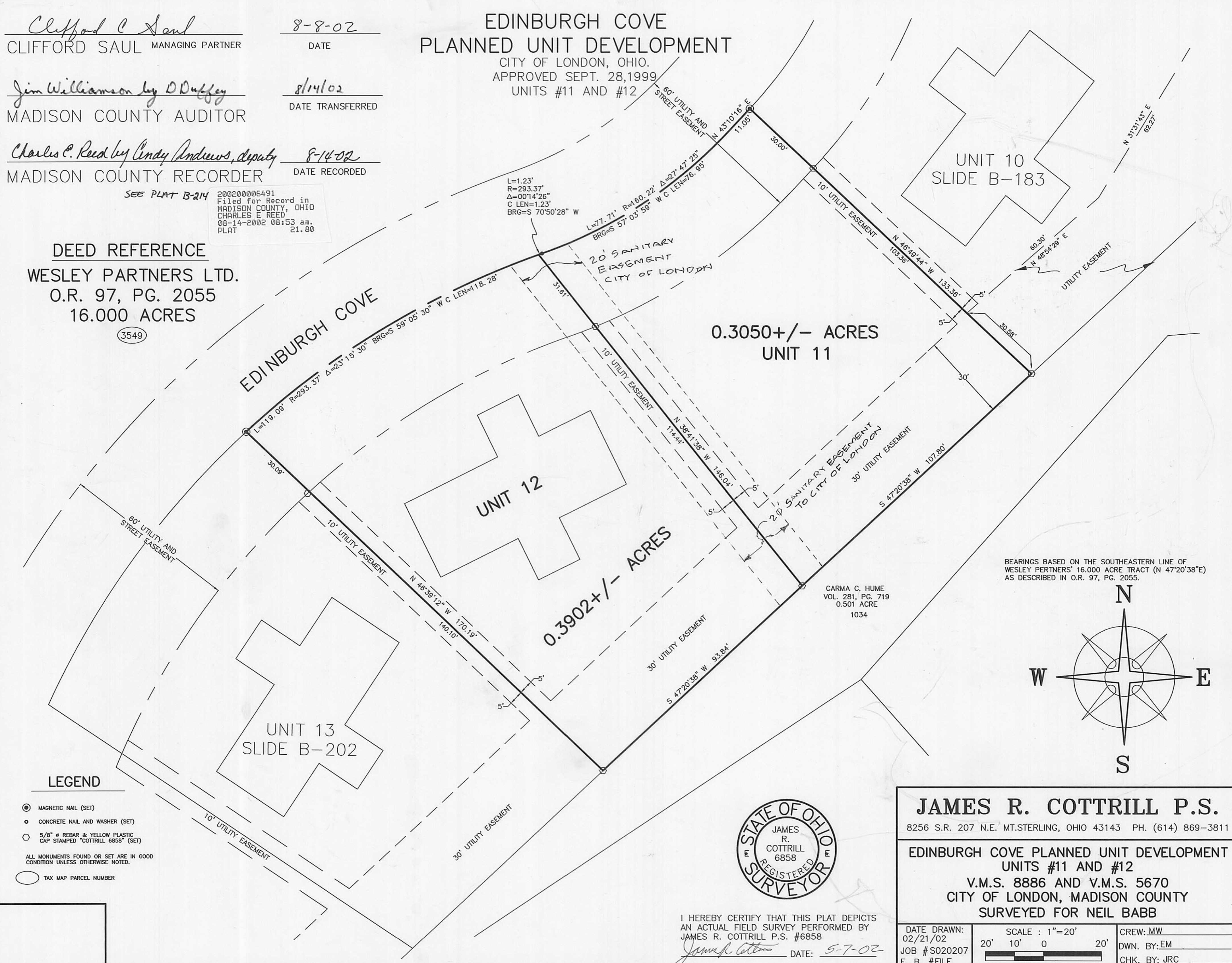
Jim Williamson by D. Duffey
MADISON COUNTY AUDITOR
8/14/02
DATE TRANSFERRED

Charles E. Reed by Cindy Andrews, deputy
MADISON COUNTY RECORDER
8-14-02
DATE RECORDED

SEE PLAT B-214
200200006491
Filed for Record in
MADISON COUNTY, OHIO
CHARLES E. REED
08-14-2002 08:53 am.
PLAT 21.80

DEED REFERENCE
WESLEY PARTNERS LTD.
O.R. 97, PG. 2055
16.000 ACRES
(3549)

**EDINBURGH COVE
PLANNED UNIT DEVELOPMENT**
CITY OF LONDON, OHIO.
APPROVED SEPT. 28, 1999
UNITS #11 AND #12



LEGEND

- MAGNETIC NAIL (SET)
- CONCRETE NAIL AND WASHER (SET)
- 5/8" REBAR & YELLOW PLASTIC CAP STAMPED "COTTRILL 6858" (SET)
- ALL MONUMENTS FOUND OR SET ARE IN GOOD CONDITION UNLESS OTHERWISE NOTED.
- TAX MAP PARCEL NUMBER



I HEREBY CERTIFY THAT THIS PLAT DEPICTS
AN ACTUAL FIELD SURVEY PERFORMED BY
JAMES R. COTTRILL P.S. #6858
James R. Cottrill DATE: 5-7-02

JAMES R. COTTRILL P.S.
8256 S.R. 207 N.E. MT. STERLING, OHIO 43143 PH. (614) 869-3811

**EDINBURGH COVE PLANNED UNIT DEVELOPMENT
UNITS #11 AND #12**
V.M.S. 8886 AND V.M.S. 5670
CITY OF LONDON, MADISON COUNTY
SURVEYED FOR NEIL BABB

DATE DRAWN: 02/21/02	SCALE: 1"=20' 20' 10' 0' 20'	CREW: MW
JOB # S020207		DWN. BY: EM
F. B. # FILE		CHK. BY: JRC

BEARINGS BASED ON THE SOUTHEASTERN LINE OF
WESLEY PARTNERS' 16,000 ACRE TRACT (N 47°20'38"E)
AS DESCRIBED IN O.R. 97, PG. 2055.

