

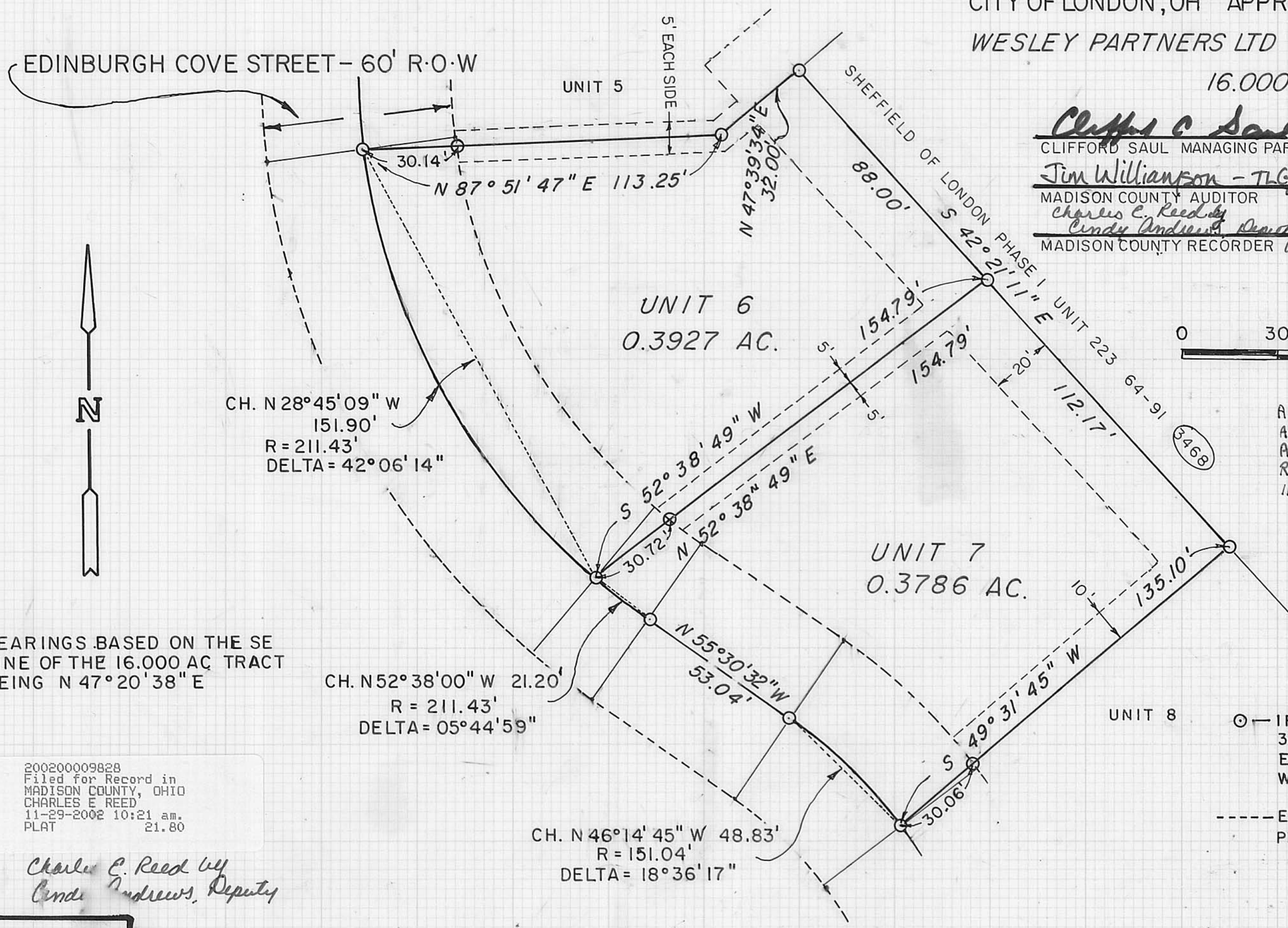
PLAT OF A SURVEY FOR UNIT 6 AND UNIT 7 OF THE :

EDINBURGH COVE PLANNED UNIT DEVELOPMENT

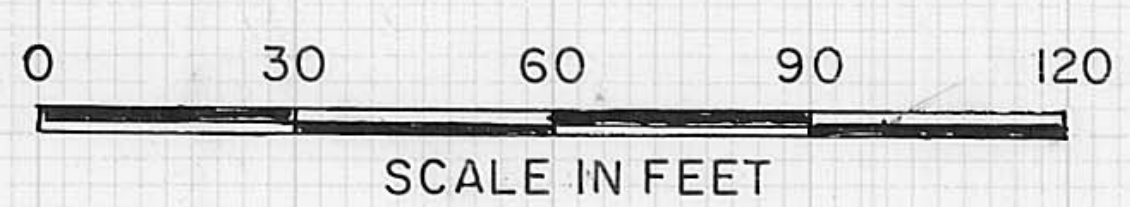
CITY OF LONDON, OH APPROVED 28 SEPT 1999

WESLEY PARTNERS LTD O.R. 97, PG. 2005

16.000 AC.



Clifford C. Saul 11-25-02
 CLIFFORD SAUL MANAGING PARTNER DATE
Jim Williamson - TLG 11-29-02
 MADISON COUNTY AUDITOR DATE
Charles E. Reed by Cindy Andrews, Deputy 11-29-02
 MADISON COUNTY RECORDER DATE



ACCEPTED BY MADISON COUNTY ENGINEER
 ACREAGE 0.3927 UNIT 6
 ACREAGE 0.3786 UNIT 7
 RESIDUAL 10.5739 (31-00055.001)
 11/26/02 JB

LEGEND

- IRON PIPES SET 3/4" IN DIA. BY 30" IN LENGTH WITH CAPS P.S. 5969, EXCEPTING CENTERLINE MONUMENTS WHICH ARE "MAG" NAILS
- EASEMENT LINES FOR PUBLIC AND PRIVATE UTILITIES

BEARINGS BASED ON THE SE LINE OF THE 16.000 AC TRACT BEING N 47° 20' 38" E

200200009828
 Filed for Record in
 MADISON COUNTY, OHIO
 CHARLES E REED
 11-29-2002 10:21 am.
 PLAT 21.80

Charles E. Reed by
 Cindy Andrews, Deputy

I HEREBY CERTIFY THAT THIS PLAT REPRESENTS A FIELD SURVEY BY:

Neil Babb
 NEIL BABB P.S. 5969
 18 Nov 2002
 DATE

PLAT OF A SURVEY OF UNIT 4

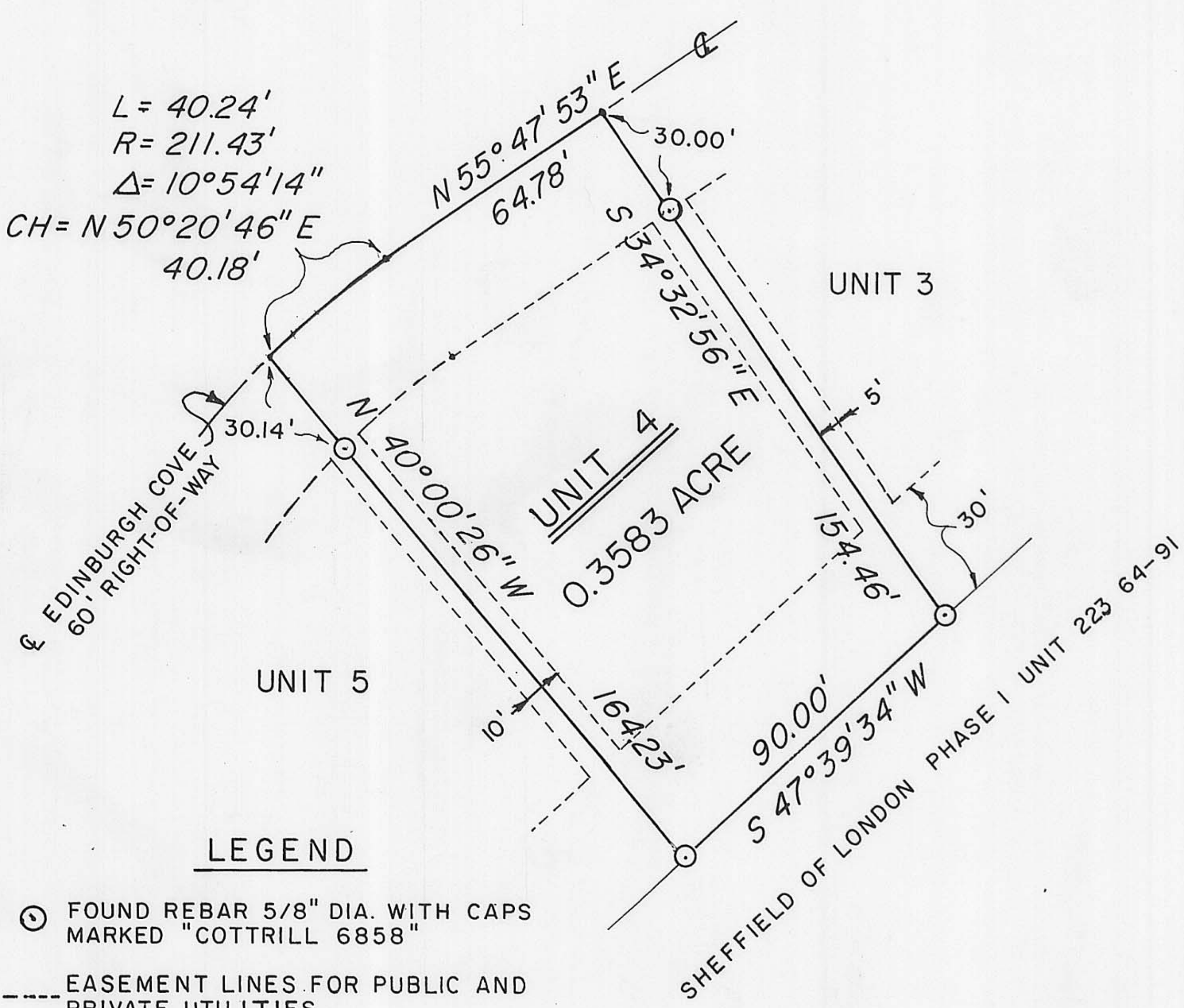
1065 EDINBURGH COVE

EDINBURGH COVE PLANNED UNIT DEV.

CITY OF LONDON, OH APPROVED 28 SEPT 1999

O.R. 97, PG. 2005

16.000 AC.



Clifford C. Saul 3-18-03
 CLIFFORD SAUL MANAGING PARTNER DATE
Jim Williamson - AS 3-21-03
 MADISON COUNTY AUDITOR DATE
Charles E. Reed by Cindy Andrews, Deputy 3-21-03
 MADISON COUNTY RECORDER DATE

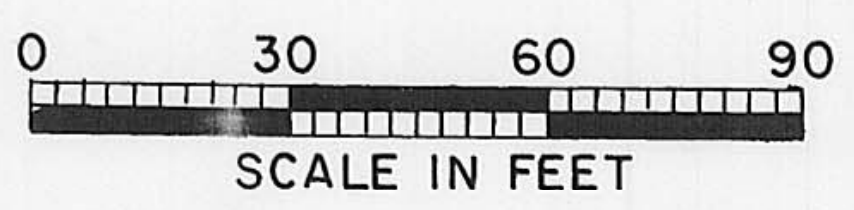
200300002631
 Filed for Record in
 MADISON COUNTY, OHIO
 CHARLES E REED
 03-21-2003 02:10 pm.
 PLAT 21.80

B-256

BEARINGS BASED ON THE SE LINE OF THE 16.000 AC. TRACT BEING N 47° 20' 38" E

LEGEND

- FOUND REBAR 5/8" DIA. WITH CAPS MARKED "COTTRILL 6858"
- EASEMENT LINES FOR PUBLIC AND PRIVATE UTILITIES



PLAT ACCEPTED
 MADISON COUNTY ENGINEER
 BY JB + VE
 DATE 3-18-03
 ACREAGE 0.3583
 RESIDUAL 10.2156 AC
 LONDON 31-00055.001

I HEREBY CERTIFY THAT THIS PLAT REPRESENTS A FIELD SURVEY BY:
Neil Babb
 NEIL BABB P.S. 5969
 3/18/03
 DATE