

# PLAT OF A SURVEY OF UNIT 15

# 1042 EDINBURGH COVE

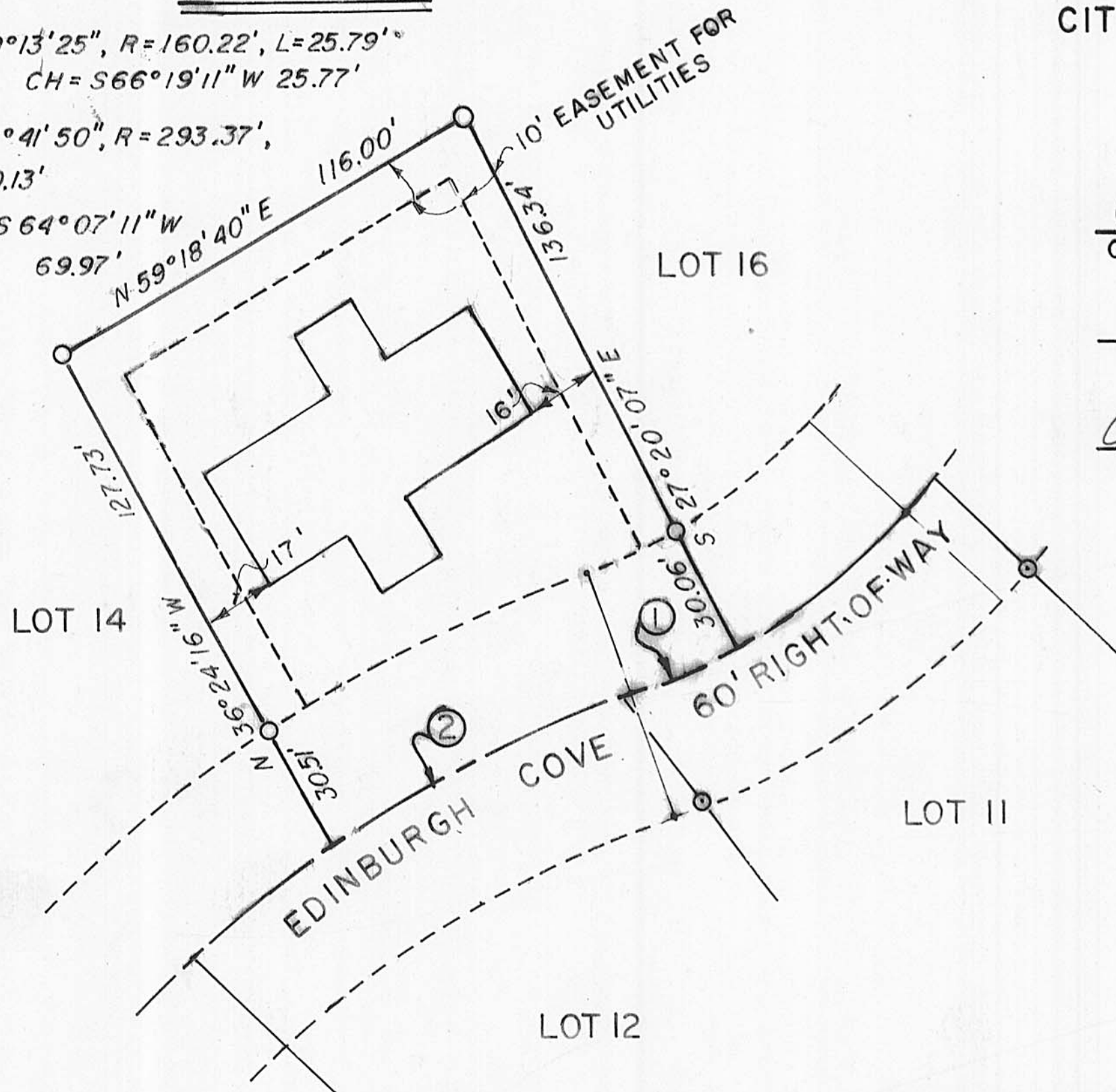
0.3171 AC.

EDINBURGH COVE PLANNED UNIT DEV.  
CITY OF LONDON, OH APPROVED 28 SEPT 1999  
O. R. 97, PG. 2005  
16.000 AC.

CURVE 1:  $\Delta = 09^{\circ}13'25''$ ,  $R = 160.22'$ ,  $L = 25.79'$   
 $CH = S66^{\circ}19'11'' W 25.77'$

CURVE 2:  $\Delta = 13^{\circ}41'50''$ ,  $R = 293.37'$ ,  
 $L = 70.13'$

$CH = S64^{\circ}07'11'' W 69.97'$   
 $N59^{\circ}18'40'' E$



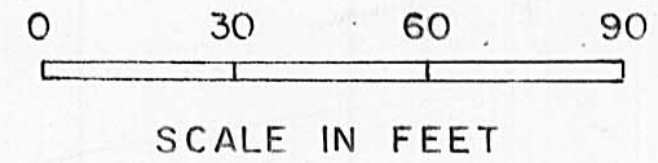
Clifford C. Saul 5-20-03  
CLIFFORD SAUL MANAGING PARTNER DATE

Jim Williamson - by Terry Hurlburt 5-27-03  
MADISON COUNTY AUDITOR DATE

Charles E. Reed by Cindy Andrews, Deputy 5-29-03  
MADISON COUNTY RECORDER DATE

20030005054 b-260  
Filed for Record in  
MADISON COUNTY, OHIO  
CHARLES E REED  
05-29-2003 08:45 am.  
PLAT 21.80

BEARINGS BASED ON THE SE  
LINE OF THE 16.000 AC. TRACT  
BEING N 47° 20' 38" E



- LEGEND
- ⊙ FOUND REBAR 5/8" DIA. WITH CAPS MARKED "COTTRILL" 6858
  - SET IRON PIPES 3/4" IN DIA. BY 30" IN LENGTH WITH CAPS. MARKED 5969

PLAT ACCEPTED BY MADISON COUNTY ENGINEER  
BY VE DATE 5-27-03  
ACREAGE 0.3171 RESIDUAL 9.8985  
LONDON 31-00655.001

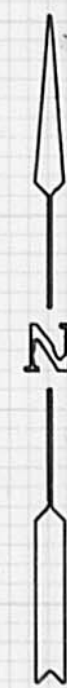
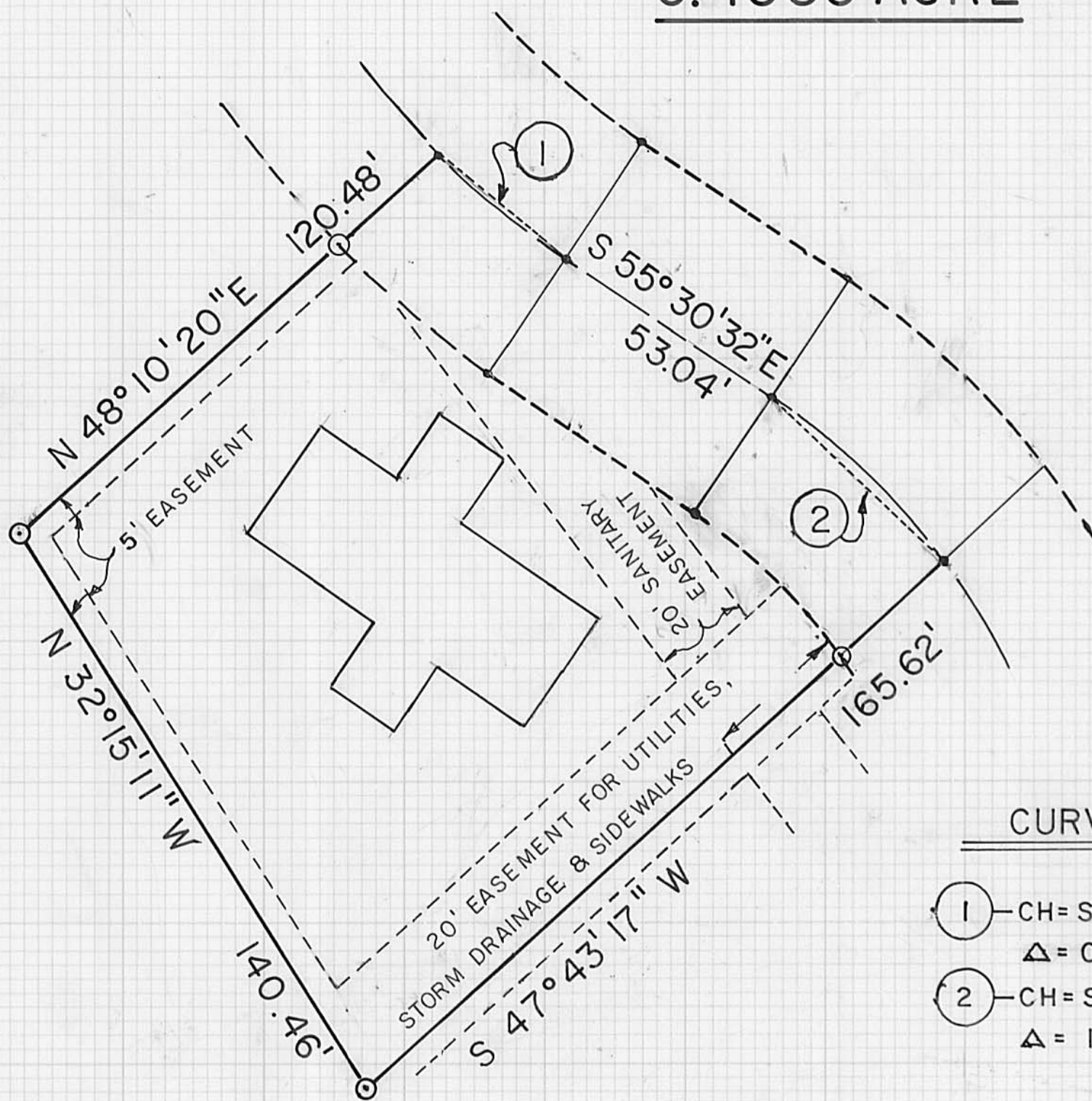
I HEREBY CERTIFY THAT THIS  
PLAT REPRESENTS A FIELD  
SURVEY BY:  
Neil Babb  
NEIL BABB PS. 5969 DATE

# PLAT OF A SURVEY OF UNIT 17

# 1050 EDINBURGH COVE

0.4583 ACRE

EDINBURGH COVE PLANNED UNIT DEV.  
CITY OF LONDON, OH APPROVED 28 SEPT 1999  
WESLEY PARTNERS O. R. 97, PG 2005  
ORIGINAL 16.000 AC



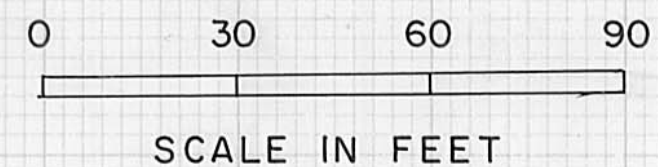
Clifford C. Saul 12-5-03  
CLIFFORD SAUL MANAGING PARTNER DATE

Jana Colwell - Deputy 12-8-03  
MADISON COUNTY AUDITOR DATE

Charles E. Reed by Rachel Kimble, Deputy 12-8-03  
MADISON COUNTY RECORDER DATE

200300012488  
Filed for Record in  
MADISON COUNTY, OHIO  
CHARLES E REED  
12-08-2003 At 02:52 pm.  
PLAT 43.60  
Slide B-270

BEARINGS BASED ON THE SE  
LINE OF THE 16.000 AC. TRACT  
BEING N 47° 20' 38" E



CURVE DATA

- ① -  $CH = S50^{\circ}46'23'' E 36.03'$ ,  
 $\Delta = 09^{\circ}46'32''$ ,  $R = 211.43'$
- ② -  $CH = S45^{\circ}58'14'' E 50.22'$ ,  
 $\Delta = 19^{\circ}08'32''$ ,  $R = 151.04'$

- LEGEND
- SET IRON PIPES 3/4" IN DIA. BY 30" IN LENGTH WITH CAPS MARKED 5969

PLAT ACCEPTED BY MADISON COUNTY ENGINEER  
BY VE DATE 12-03  
ACREAGE 0.4583 RESIDUAL .02  
LONDON 31-00655.001

I HEREBY CERTIFY THAT THIS  
PLAT REPRESENTS A FIELD  
SURVEY BY:  
Neil Babb 11/03/03  
NEIL BABB PS. 5969 DATE