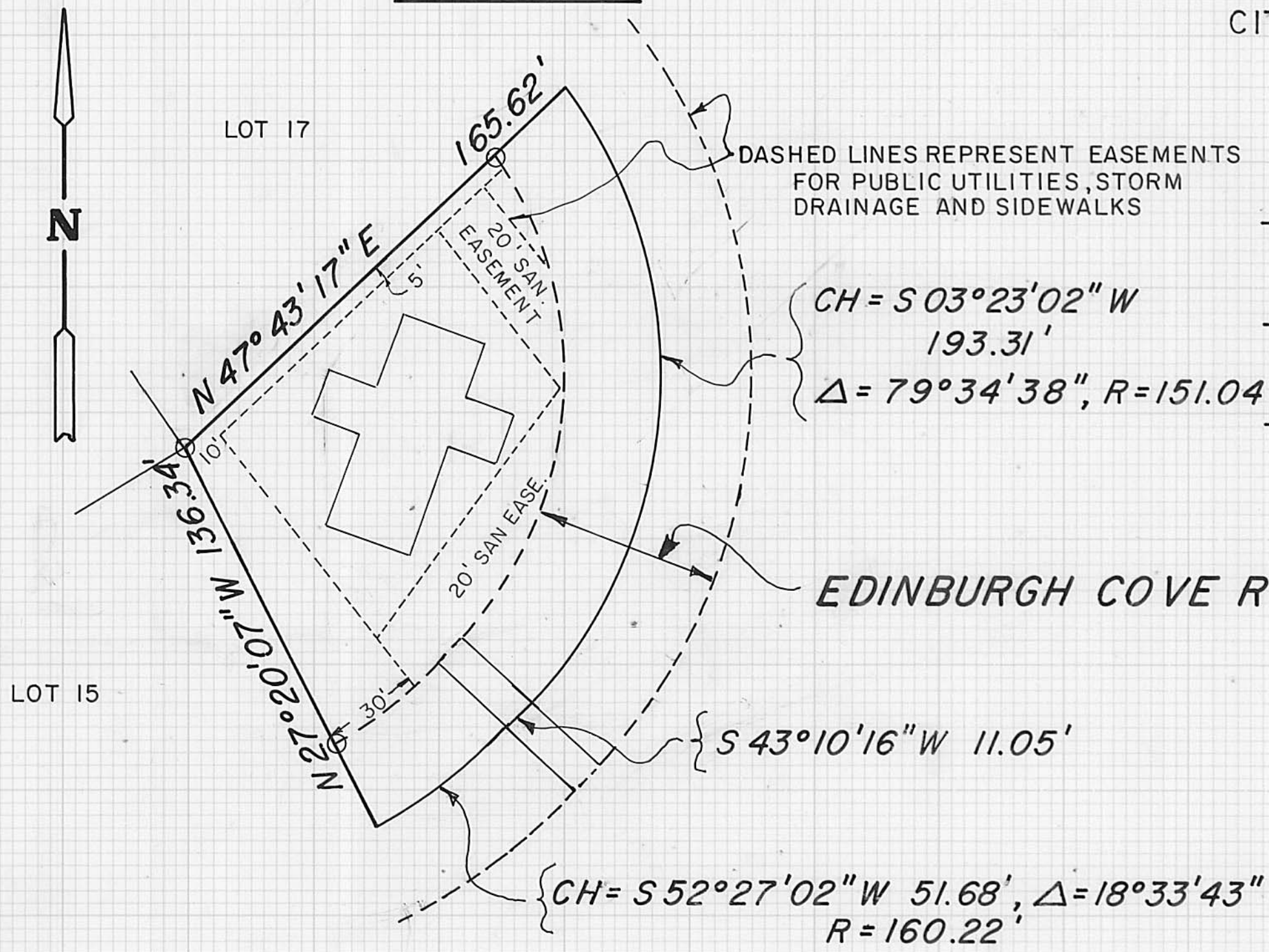


**PLAT OF A SURVEY OF UNIT 16**

**1046 EDINBURGH COVE**

0.4616 AC.

EDINBURGH COVE PLANNED UNIT DEV.  
CITY OF LONDON, OH APPROVED 28 SEPT 1999  
O.R. 97, PG. 2005  
16.000 AC.



Clifford C. Saul 12-29-03  
CLIFFORD SAUL, MANAGING PARTNER DATE

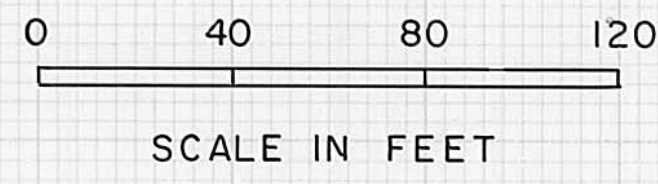
Jerry L. Matthews - Deputy 12-31-03  
MADISON COUNTY AUDITOR DATE

Charles E. Reed by Rachel Cummins, Deputy 12-31-03  
MADISON COUNTY RECORDER DATE

200300013098  
Filed for Record in  
MADISON COUNTY, OHIO  
CHARLES E REED  
12-31-2003 At 03:14 PM.  
PLAT 43.60

B-271

BEARINGS BASED ON THE SE  
LINE OF THE 16.000 AC. TRACT  
BEING N 47° 20' 38" E



**LEGEND**

○ SET IRON PIPES 3/4" IN DIA. BY  
30" IN LENGTH WITH CAPS  
MARKED 5969.

PLAT ACCEPTED BY MADISON COUNTY ENGINEER  
BY VE DATE 12-30-03  
ACREAGE UNIT 16 0.4616 RESIDUAL 8.9786  
LONDON 31-0005-001

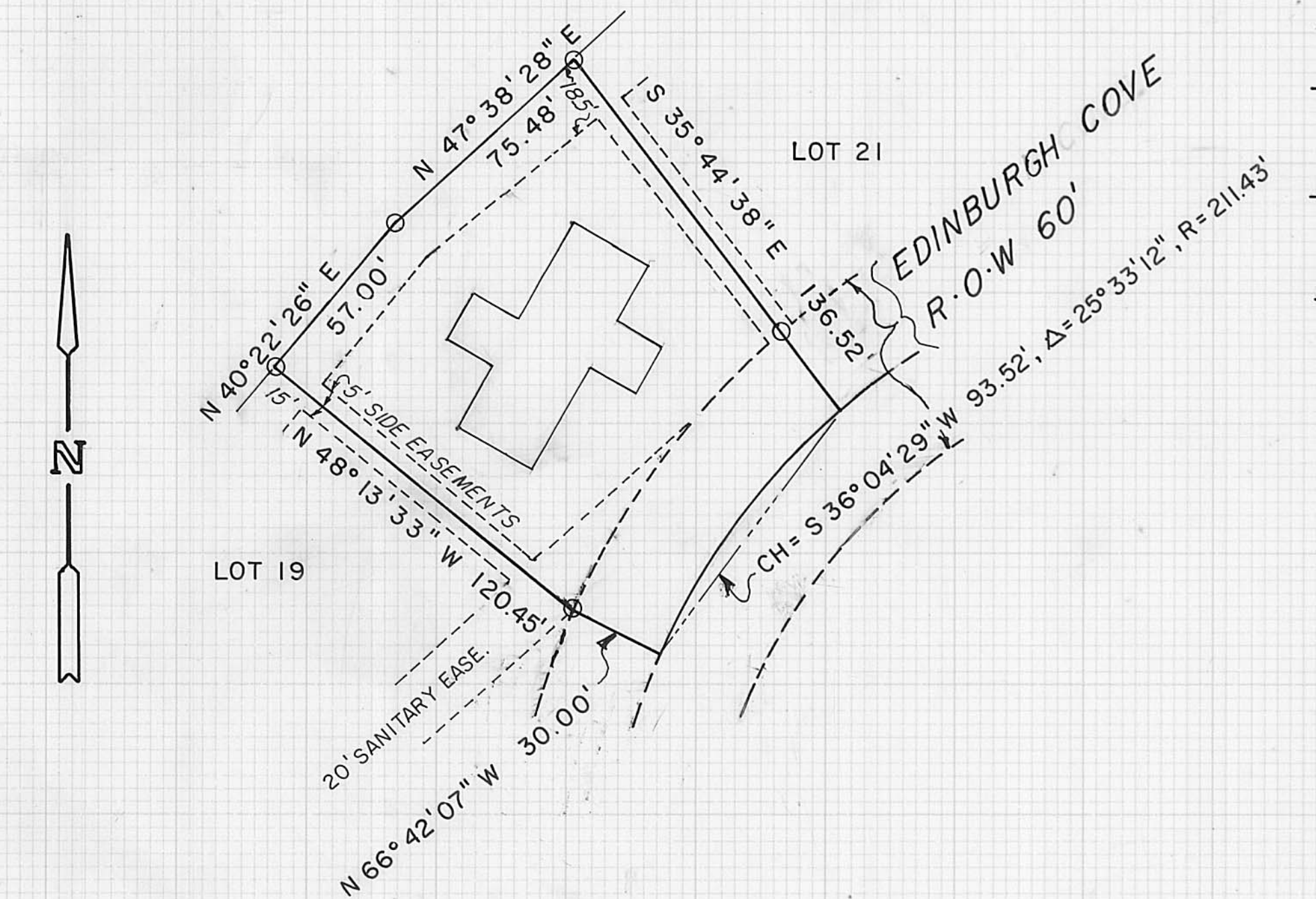
I HEREBY CERTIFY THAT THIS  
PLAT REPRESENTS A FIELD  
SURVEY BY:  
Neil Babb 11/07/03  
NEIL BABB P.S. 5969 DATE

**PLAT OF A SURVEY OF UNIT 20**

**1062 EDINBURGH COVE**

0.3762 AC.

EDINBURGH COVE PLANNED UNIT DEV.  
CITY OF LONDON, OH APPROVED 28 SEPT 1999  
O.R. 97, PG. 2005  
16.000 AC.



Clifford C. Saul 1-2-04  
CLIFFORD SAUL, MANAGING PARTNER DATE

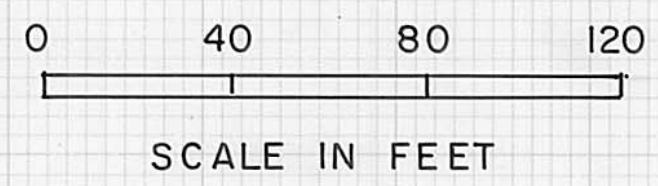
Jim Williamson 1-5-2004  
MADISON COUNTY AUDITOR DATE

Charles E. Reed by Cindy Andrews, Deputy 1-5-04  
MADISON COUNTY RECORDER DATE

SLIDE  
B-272

200400000079  
Filed for Record in  
MADISON COUNTY, OHIO  
CHARLES E REED  
01-05-2004 At 02:41 PM.  
PLAT 43.60

BEARINGS BASED ON THE SE  
LINE OF THE 16.000 AC. TRACT  
BEING N 47° 20' 38" E



**LEGEND**

○ SET IRON PIPES 3/4" X 30" WITH  
CAPS MARKED P.S. 5969

PLAT ACCEPTED BY MADISON COUNTY ENGINEER  
BY VE DATE 1-5-04  
ACREAGE 16 0.3762 RESIDUAL 7.6238  
LONDON 31-00053-001

I HEREBY CERTIFY THAT THIS  
PLAT REPRESENTS A FIELD  
SURVEY BY:  
Neil Babb 11/24/03  
NEIL BABB P.S. 5969 DATE