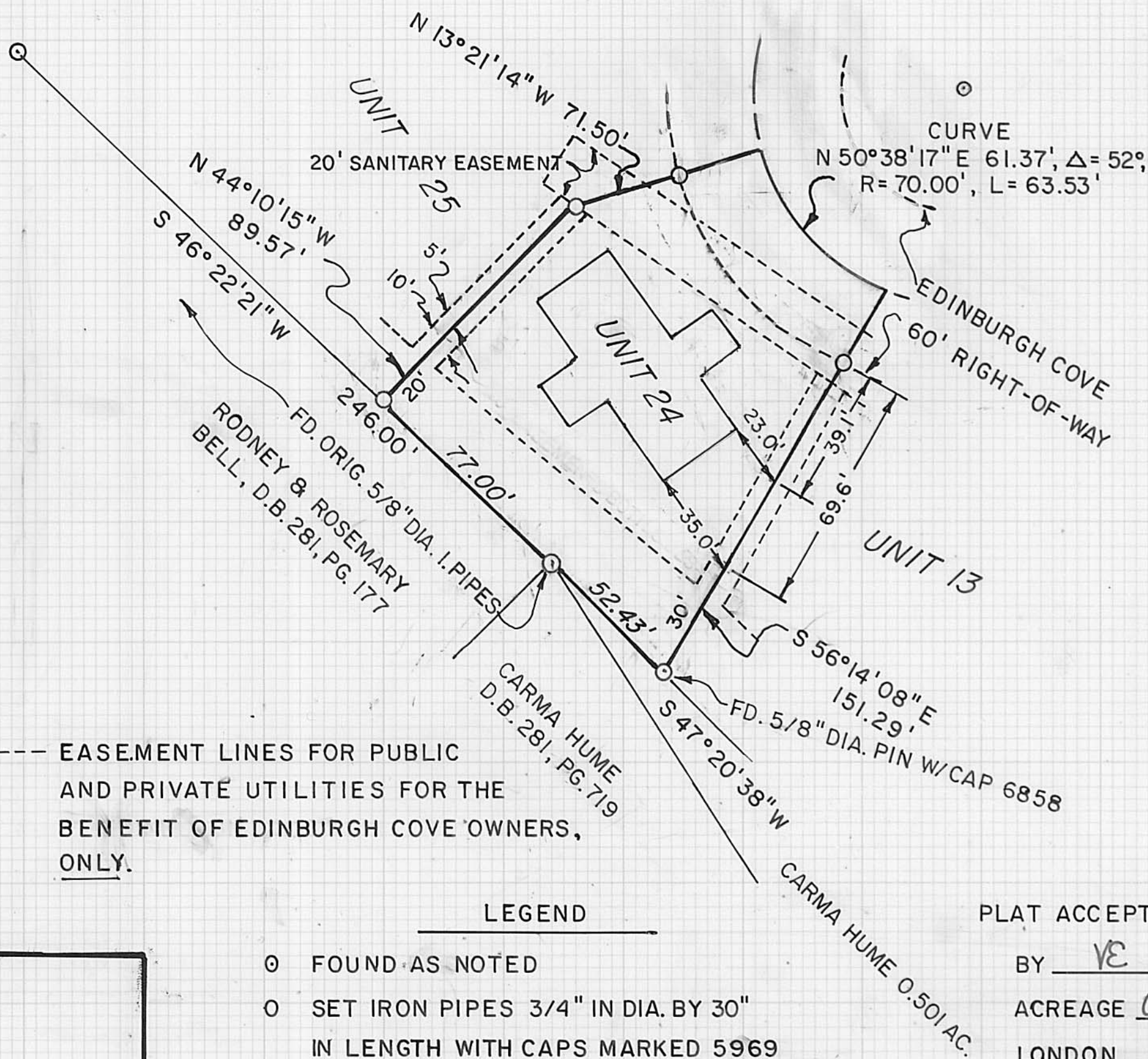


PLAT OF A SURVEY OF UNIT 24

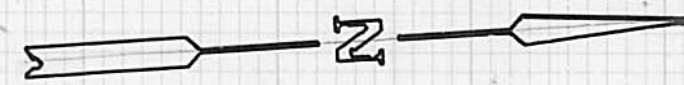
CONTAINING 0.3573 ACRES

1035 EDINBURGH COVE

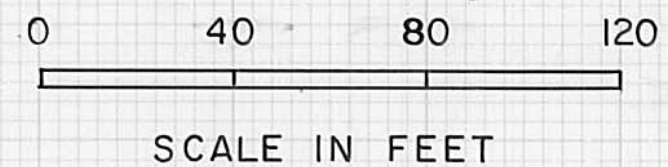
EDINBURGH COVE PLANNED UNIT DEV.
CITY OF LONDON, OH APPROVED 28 SEPT 1999
O. R. 97, PG. 2005
16.000 AC.



Clifford C Saul 7-30-04
CLIFFORD SAUL MANAGING PARTNER DATE
Jim Williamson - by J. Muntz 8-04-04
MADISON COUNTY AUDITOR DATE
Charles E. Reed by Cindy Andrews, deputy 8-4-04
MADISON COUNTY RECORDER DATE



BEARINGS BASED ON THE SE LINE OF THE 16.000 AC. TRACT BEING N 47°20'38" E



----- EASEMENT LINES FOR PUBLIC AND PRIVATE UTILITIES FOR THE BENEFIT OF EDINBURGH COVE OWNERS, ONLY.

LEGEND

- FOUND AS NOTED
- SET IRON PIPES 3/4" IN DIA. BY 30" IN LENGTH WITH CAPS MARKED 5969

PLAT ACCEPTED BY MADISON COUNTY ENGINEER
BY VE DATE 8-2-04
ACREAGE 0.3573 RESIDUAL 8.241
LONDON 31-00055-001

I HEREBY CERTIFY THAT THIS PLAT REPRESENTS A FIELD SURVEY BY:
Neil Babb 11/20/04
NEIL BABB PS.5969 DATE

200400006499
Filed for Record in
MADISON COUNTY, OHIO
CHARLES E REED
08-04-2004 At 02:36 pm.
43.60
PLAT

PLAT OF A SURVEY OF UNIT 14

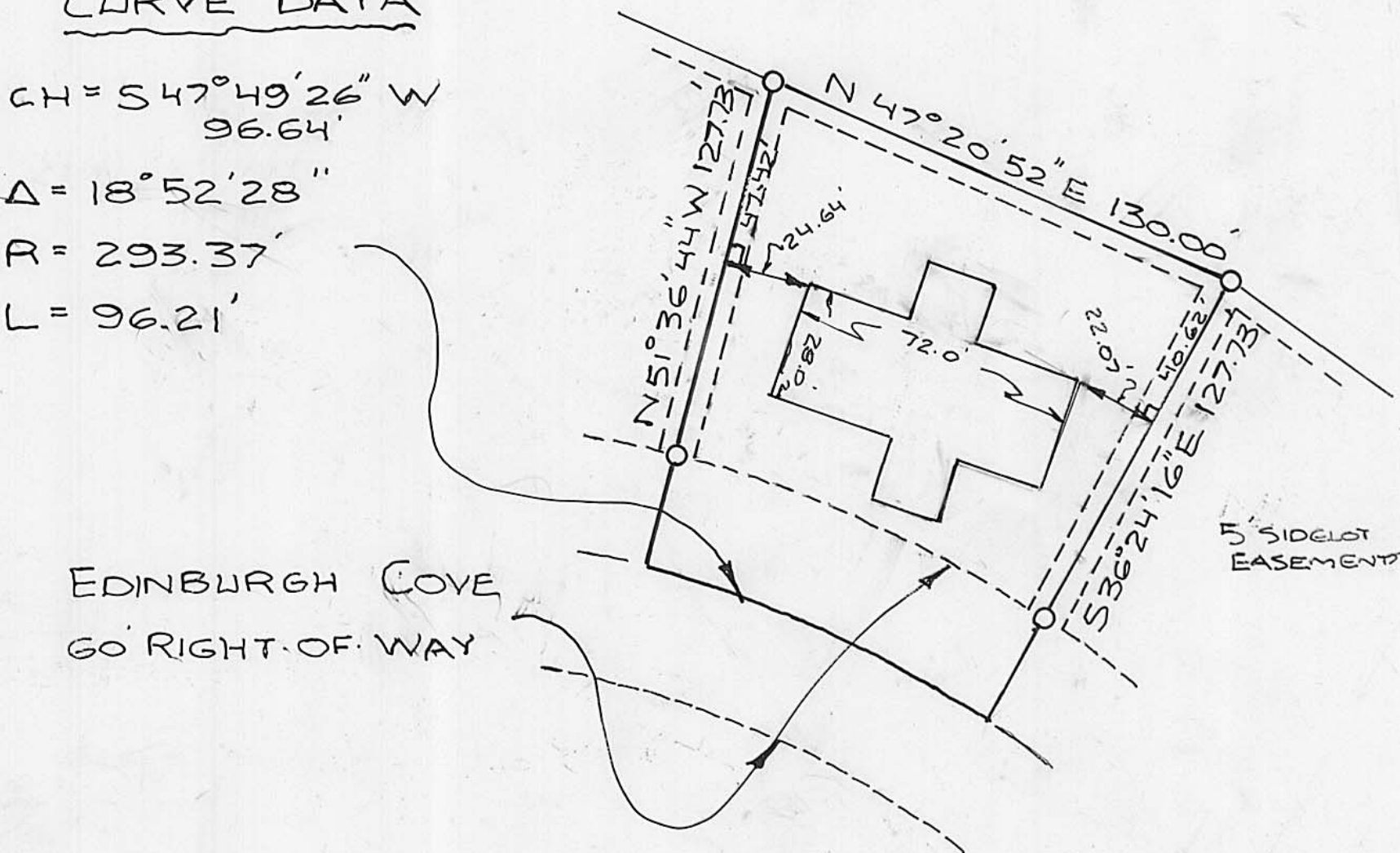
CONTAINING 0.3228 ACRES

1038 EDINBURGH COVE

EDINBURGH COVE PLANNED UNIT DEV.
CITY OF LONDON, OH APPROVED 28 SEPT 1999
AND A REVISED PLAT ON 20 JULY 2004
WESLEY PARTNERS, O. R. 97, PG. 2005, 16.000 AC.
NEW SURVEY SHOWS 16.0676 ACRES

CURVE DATA

CH = S 47°49'26" W 96.64'
Δ = 18°52'28"
R = 293.37'
L = 96.21'



EDINBURGH COVE
60' RIGHT-OF-WAY

----- EASEMENT LINES FOR PUBLIC AND PRIVATE UTILITIES FOR THE BENEFIT OF EDINBURGH COVE OWNERS ONLY.

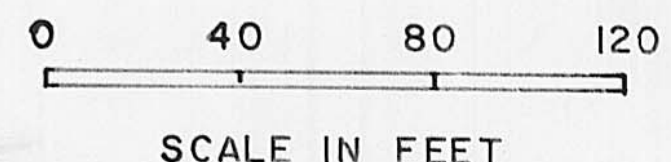
LEGEND

- FOUND AS NOTED
- SET IRON PIPES 3/4" IN DIA. BY 30" IN LENGTH WITH CAPS MARKED 5969

PLAT ACCEPTED BY MADISON COUNTY ENGINEER
BY John Brill DATE 10-27-04
ACREAGE 0.3228 RESIDUAL 7.9223
LONDON 31-00055-001

I HEREBY CERTIFY THAT THIS PLAT REPRESENTS A FIELD SURVEY BY:
Neil Babb 9/25/04
NEIL BABB P.S. 5969

BEARINGS BASED ON THE SE LINE OF THE 16.000 AC. BEING N 47°20'38" E



200400008560
Filed for Record in
MADISON COUNTY, OHIO
CHARLES E REED
10-27-2004 At 03:21 pm.
43.60
PLAT

B-289