

PLAT OF A SURVEY OF UNIT 22

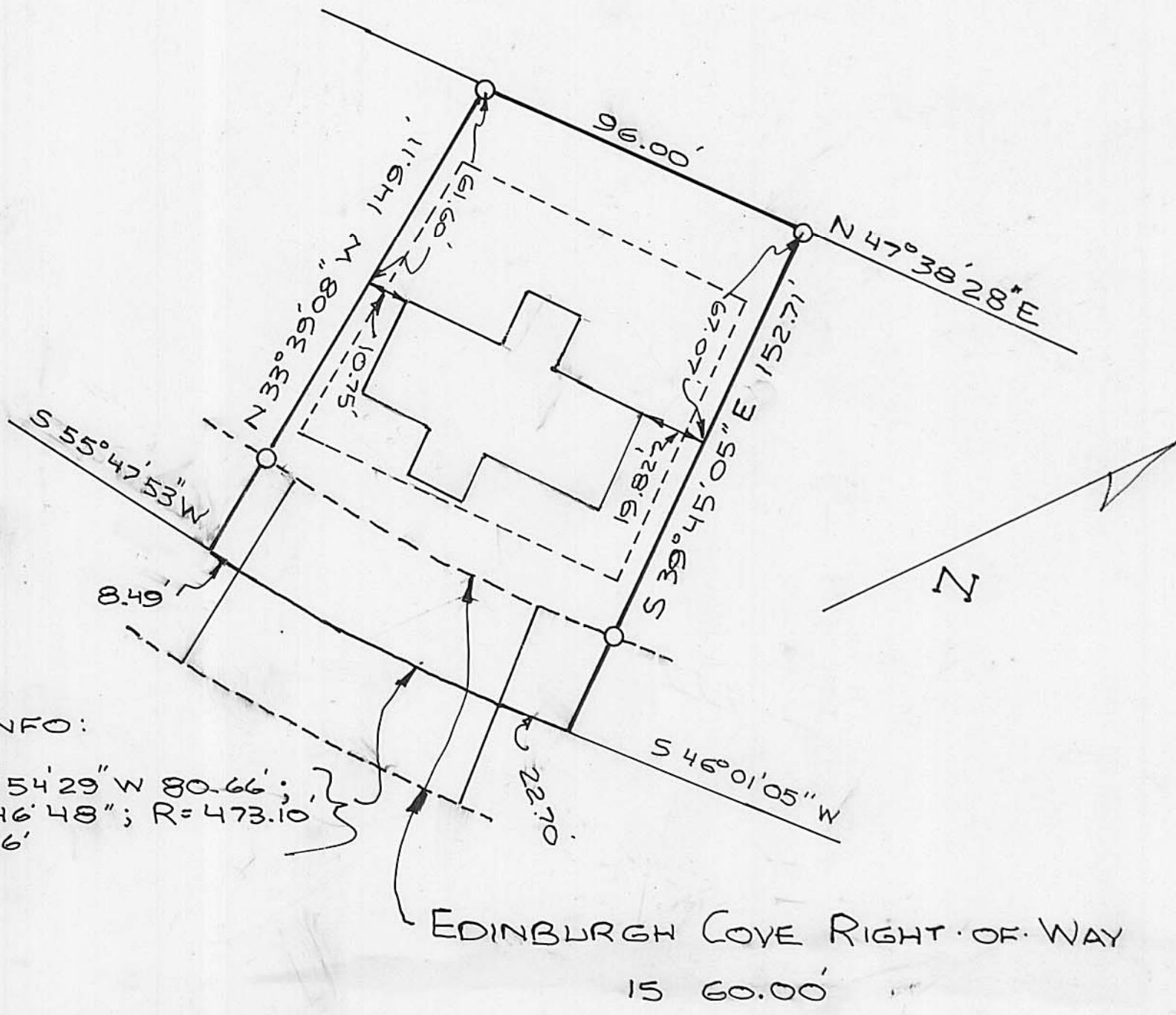
CONTAINING 0.3632 ACRES

1070 EDINBURGH COVE

EDINBURGH COVE PLANNED UNIT DEV.

CITY OF LONDON, OH APPROVED 28 SEPT 1999
AND A REVISED PLAT ON 20 JULY 2004

WESLEY PARTNERS, O.R. 97, PG. 2005, 16.000 AC.
NEW SURVEY SHOWS 16.0676 ACRES



CURVE INFO:

CH = S 55° 54' 29\" W 80.66';
Δ = 09° 46' 48\"; R = 473.10
L = 80.76'

EDINBURGH COVE RIGHT-OF-WAY
15 60.00'

----- EASEMENT LINES FOR PUBLIC
AND PRIVATE UTILITIES FOR THE
BENEFIT OF EDINBURGH COVE
OWNERS ONLY.

LEGEND

- FOUND AS NOTED
- SET IRON PIPES 3/4\" IN DIA. BY 30\"
IN LENGTH WITH CAPS MARKED 5969

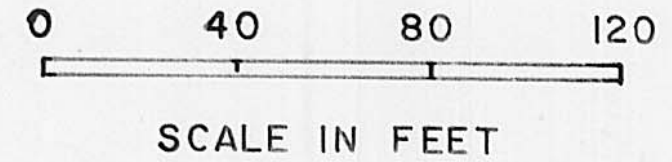
PLAT ACCEPTED BY MADISON COUNTY ENGINEER
BY John Brill DATE 10-27-04
ACREAGE 0.3632 RESIDUAL 7.5591
LONDON 31-00055.001

I HEREBY CERTIFY THAT THIS
PLAT REPRESENTS A FIELD
SURVEY BY:
Neil Babb 8/31/04
NEIL BABB P.S. 5969

20040008561
Filed for Record in
MADISON COUNTY, OHIO
CHARLES E REED
10-27-2004 At 03:21 pm.
PLAT 43.60

B-290

BEARINGS BASED ON THE SE LINE OF THE 16.000 AC. BEING
N 47° 20' 38\" E



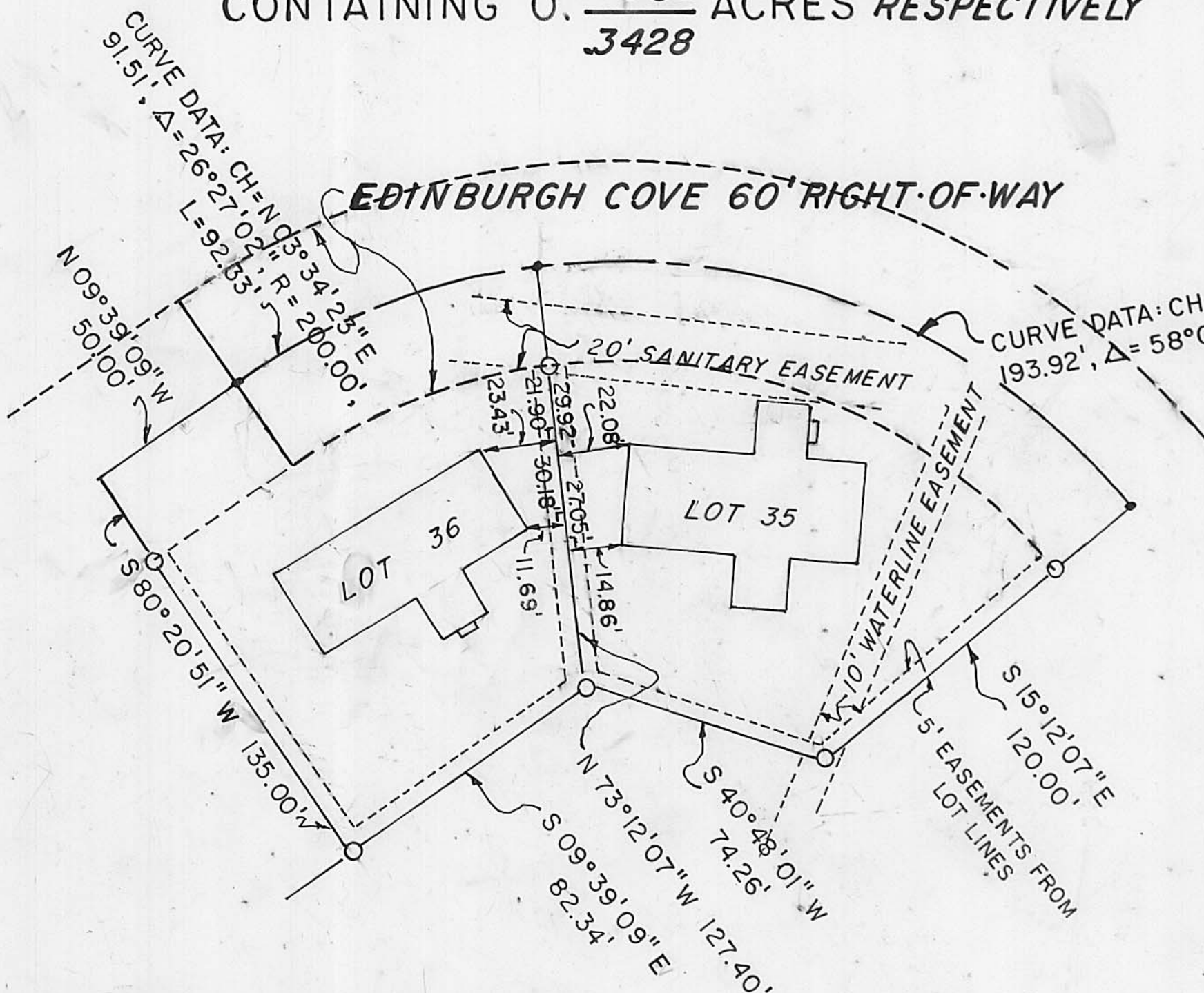
PLAT OF A SURVEY OF UNIT'S 35 & 36, 10248 & 1026, RESP. EDINBURGH COVE

CONTAINING 0.4082 ACRES RESPECTIVELY
3428

EDINBURGH COVE PLANNED UNIT DEV.

CITY OF LONDON, OH APPROVED 28 SEPT 1999
AND A REVISED PLAT ON 20 JULY 2004

WESLEY PARTNERS, O.R. 97, PG. 2005, 16.000 AC.
NEW SURVEY SHOWS 16.0676 ACRES



----- EASEMENT LINES FOR PUBLIC
AND PRIVATE UTILITIES FOR THE
BENEFIT OF EDINBURGH COVE
OWNERS ONLY.

LEGEND

- FOUND AS NOTED
- SET IRON PIPES 3/4\" IN DIA. BY 30\"
IN LENGTH WITH CAPS MARKED 5969

PLAT ACCEPTED BY MADISON COUNTY ENGINEER
BY John Brill DATE 12-22-04
ACREAGE 0.4082 + 0.3428 RESIDUAL 6.8081 ac
LONDON 31-00055.001

I HEREBY CERTIFY THAT THIS
PLAT REPRESENTS A FIELD
SURVEY BY:
Neil Babb 12/04/04
NEIL BABB P.S. 5969

Clifford C Saul 12-17-04
CLIFFORD SAUL MANAGING PARTNER DATE

JIM WILLIAMSON / J. Strauss 12-22-04
MADISON COUNTY AUDITOR DATE

Charles E. Reed by Cindy Andrews, Deputy 12-27-04
MADISON COUNTY RECORDER DATE

20040009917
Filed for Record in
MADISON COUNTY, OHIO
CHARLES E REED
12-27-2004 At 08:22 am.
PLAT 43.60

SLIDE B-291

BEARINGS BASED ON THE SE LINE OF THE 16.000 AC. BEING
N 47° 20' 38\" E

