

PLAT OF A SURVEY OF UNIT 19

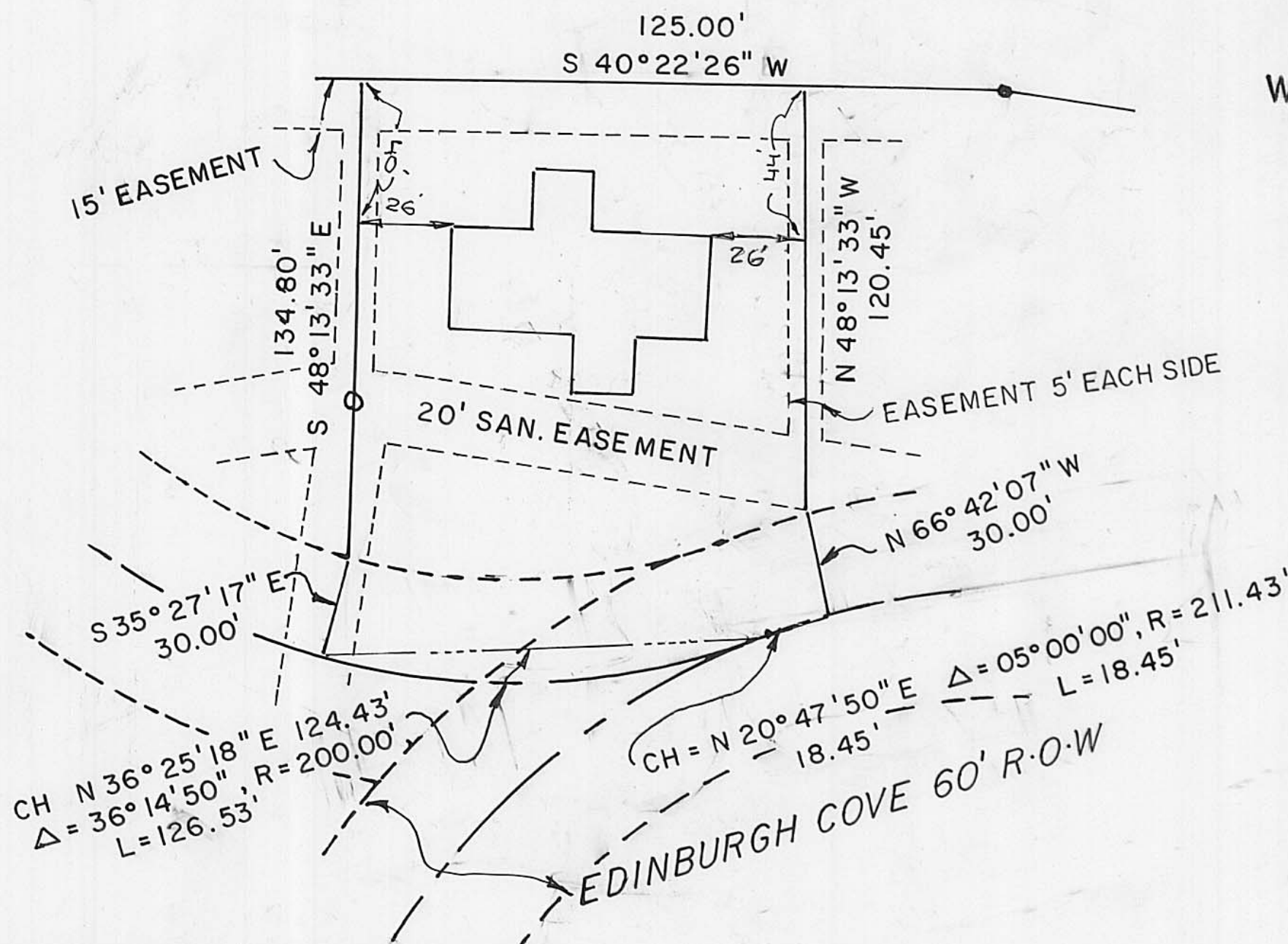
CONTAINING 0.4809 ACRES

1058 EDINBURGH COVE

EDINBURGH COVE PLANNED UNIT DEV.

CITY OF LONDON, OH APPROVED 28 SEPT 1999
AND A REVISED PLAT ON 20 JULY 2004

WESLEY PARTNERS, O.R. 97, PG. 2005, 16.000 AC.
NEW SURVEY SHOWS 16.0676 ACRES



--- EASEMENT LINES FOR PUBLIC AND PRIVATE UTILITIES FOR THE BENEFIT OF EDINBURGH COVE OWNERS ONLY.

LEGEND

- FOUND AS NOTED
- SET IRON PIPES 3/4" IN DIA. BY 30" IN LENGTH WITH CAPS MARKED 5969

PLAT ACCEPTED BY MADISON COUNTY ENGINEER

BY VE DATE 3-18-05

ACREAGE 0.4809 RESIDUAL 6.3272

LONDON 31-00055-001

I HEREBY CERTIFY THAT THIS

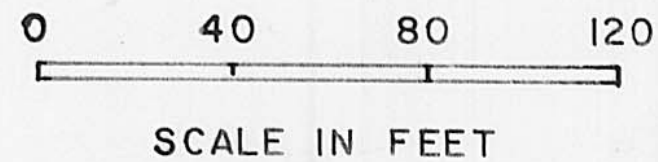
PLAT REPRESENTS A FIELD

SURVEY BY: Neil Babb 03/10/05

NEIL BABB P.S. 5969

200500001706
Filed for Record in
MADISON COUNTY, OHIO
CHARLES E REED
03-21-2005 At 02:19 PM
PLAT 43.60
B-295

BEARINGS BASED ON THE SE LINE OF THE 16.000 AC. BEING
N 47° 20' 38" E



PLAT OF A SURVEY OF UNIT 38

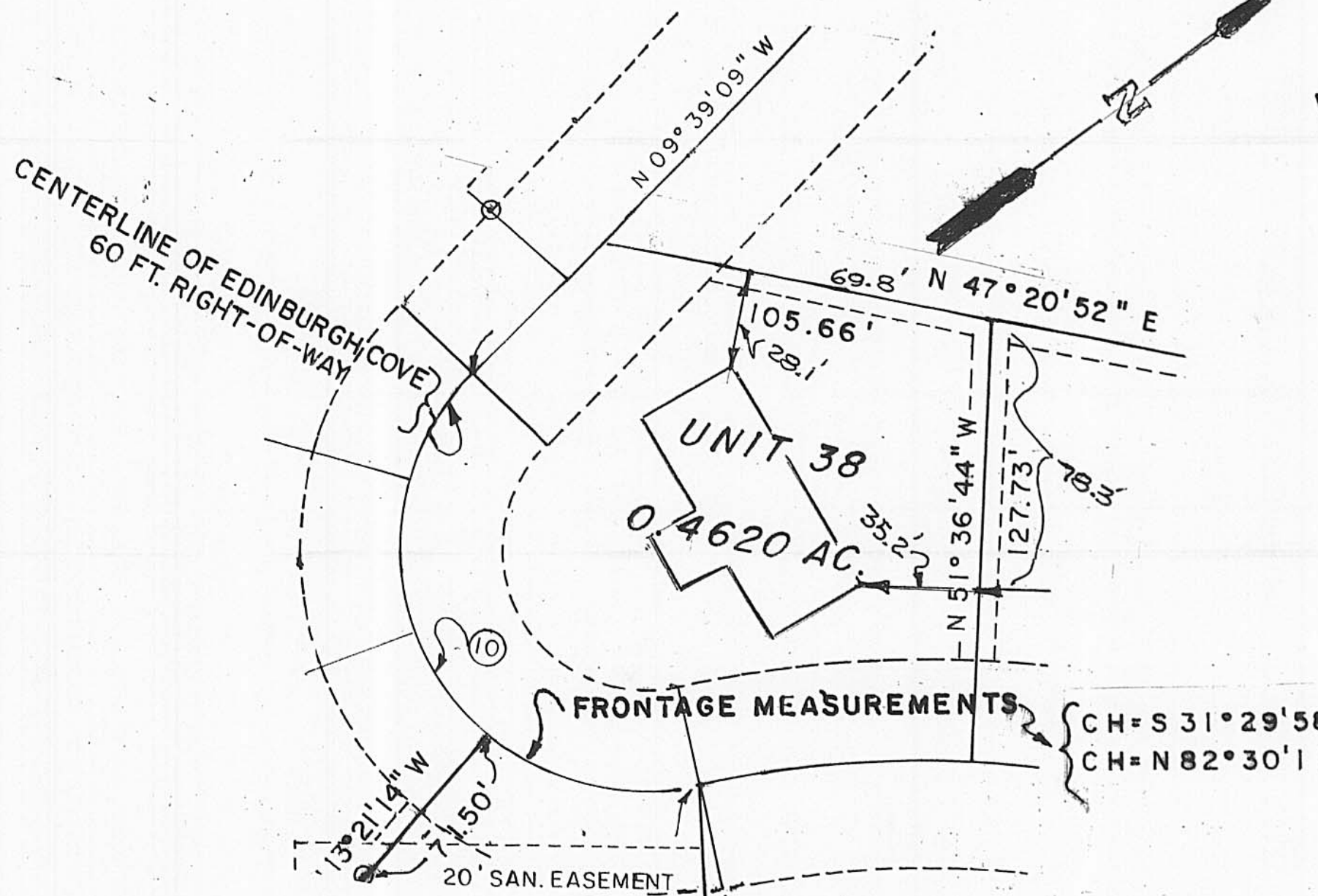
CONTAINING 0.4620 ACRES

1036 EDINBURGH COVE

EDINBURGH COVE PLANNED UNIT DEV.

CITY OF LONDON, OH APPROVED 28 SEPT 1999
AND A REVISED PLAT ON 20 JULY 2004

WESLEY PARTNERS, O.R. 97, PG. 2005, 16.000 AC.
NEW SURVEY SHOWS 16.0676 ACRES



--- EASEMENT LINES FOR PUBLIC AND PRIVATE UTILITIES FOR THE BENEFIT OF EDINBURGH COVE OWNERS ONLY.

EASEMENT FOR THE STREET IS 60 FT.
RIGHT-OF-WAY

LEGEND

- FOUND AS NOTED
- SET IRON PIPES 3/4" IN DIA. BY 30" IN LENGTH WITH CAPS MARKED 5969

PLAT ACCEPTED BY MADISON COUNTY ENGINEER

BY VE DATE 6-16-05

ACREAGE 0.4620 RESIDUAL 5.8652

LONDON 31-00055-001

I HEREBY CERTIFY THAT THIS

PLAT REPRESENTS A FIELD

SURVEY BY: Neil Babb 6/10/05

NEIL BABB P.S. 5969

200500003817
Filed for Record in
MADISON COUNTY, OHIO
CHARLES E REED
06-17-2005 At 11:03 AM
PLAT 43.60
B-302

BEARINGS BASED ON THE SE LINE OF THE 16.000 AC. BEING
N 47° 20' 38" E

