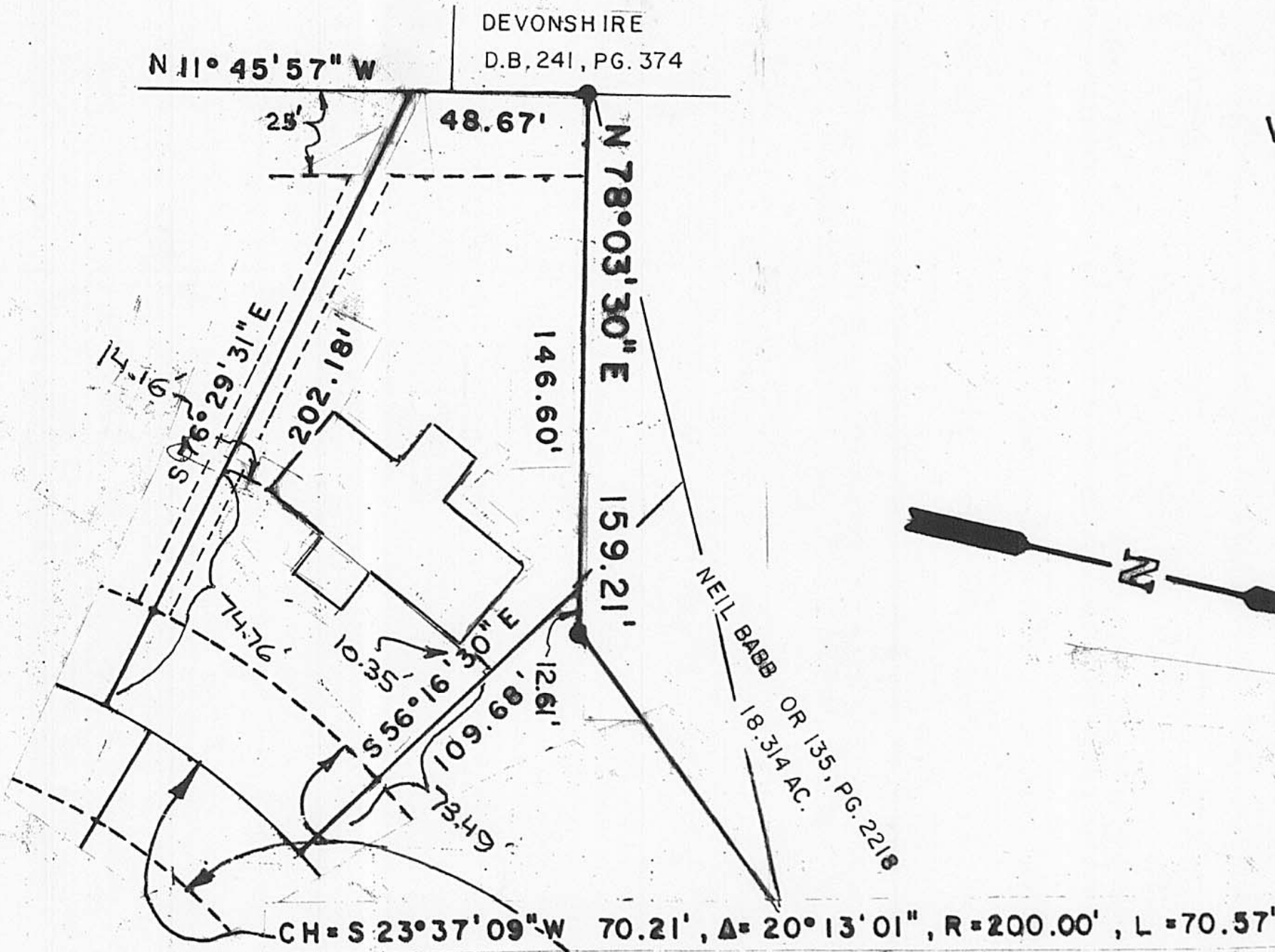


PLAT OF A SURVEY OF UNIT 32

CONTAINING 0.4146 ACRES

DEVONSHIRE
D.B. 241, PG. 374



----- EASEMENT LINES FOR PUBLIC AND PRIVATE UTILITIES FOR THE BENEFIT OF EDINBURGH COVE OWNERS ONLY.

EASEMENT FOR THE STREET IS 60 FT. RIGHT-OF-WAY

LEGEND

- FOUND AS NOTED
- SET IRON PIPES 3/4" IN DIA. BY 30" IN LENGTH WITH CAPS MARKED 5969

1019 EDINBURGH COVE

EDINBURGH COVE PLANNED UNIT DEV.

CITY OF LONDON, OH APPROVED 28 SEPT 1999 AND A REVISED PLAT ON 20 JULY 2004

WESLEY PARTNERS, O.R. 97, PG. 2005, 16.000 AC. NEW SURVEY SHOWS 16.0676 ACRES

Clifford C. Saul 6-17-05
CLIFFORD SAUL MANAGING PARTNER DATE

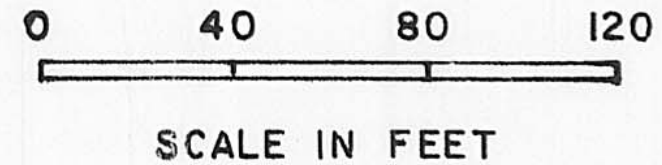
Jim Williamson - By: Jerry J. Hunt 6-22-05
MADISON COUNTY AUDITOR DATE

Charles E. Reed by Cindy Andrews, deputy 6-23-05
MADISON COUNTY RECORDER DATE

20050003948
Filed for Record in
MADISON COUNTY, OHIO
CHARLES E REED
06-23-2005 At 08:25 am.
PLAT 43.60

PLAT SLIDE B-303

BEARINGS BASED ON THE SE LINE OF THE 16.000 AC. BEING
N 47° 20' 38" E



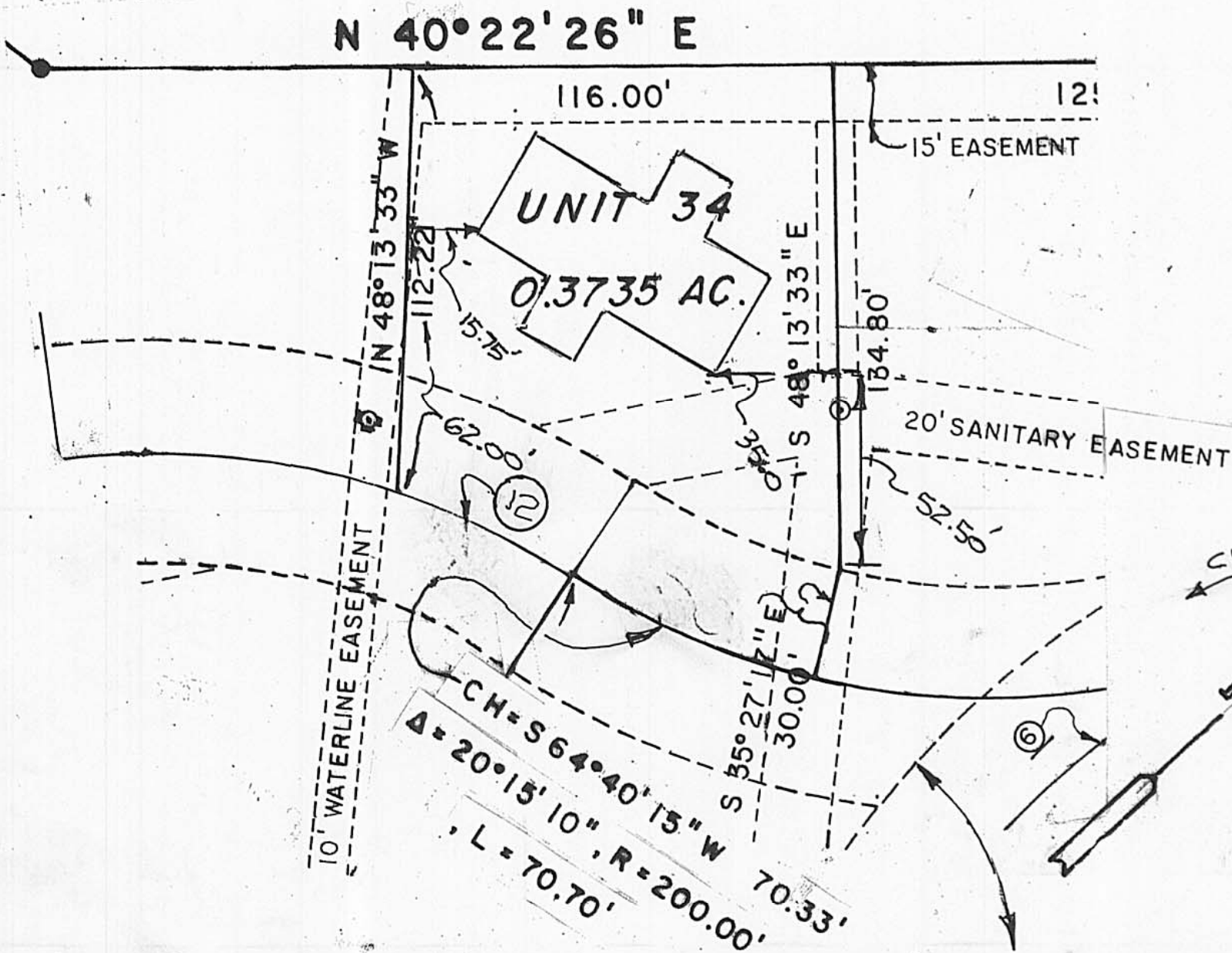
PLAT ACCEPTED BY MADISON COUNTY ENGINEER

BY VE DATE 6-22-05
ACREAGE 0.4146 RESIDUAL 4.7854506
LONDON 31-00065-001

I HEREBY CERTIFY THAT THIS PLAT REPRESENTS A FIELD SURVEY BY
NEIL BABB R.S. 5969

PLAT OF A SURVEY OF UNIT 34

CONTAINING 0.3735 ACRES



----- EASEMENT LINES FOR PUBLIC AND PRIVATE UTILITIES FOR THE BENEFIT OF EDINBURGH COVE OWNERS ONLY.

EASEMENT FOR THE STREET IS 60 FT. RIGHT-OF-WAY

LEGEND

- FOUND AS NOTED
- SET IRON PIPES 3/4" IN DIA. BY 30" IN LENGTH WITH CAPS MARKED 5969

1015 EDINBURGH COVE

EDINBURGH COVE PLANNED UNIT DEV.

CITY OF LONDON, OH APPROVED 28 SEPT 1999 AND A REVISED PLAT ON 20 JULY 2004

WESLEY PARTNERS, O.R. 97, PG. 2005, 16.000 AC. NEW SURVEY SHOWS 16.0676 ACRES

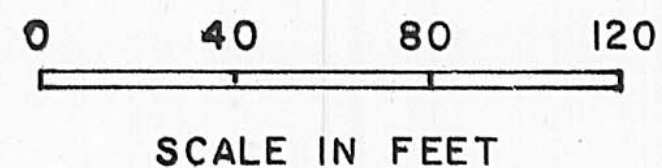
Clifford C. Saul 6-17-05
CLIFFORD SAUL MANAGING PARTNER DATE

Jim Williamson - By: Jerry J. Hunt 6-22-05
MADISON COUNTY AUDITOR DATE

Charles E. Reed by Cindy Andrews, deputy 6-23-05
MADISON COUNTY RECORDER DATE

20050003949
Filed for Record in
MADISON COUNTY, OHIO
CHARLES E REED
06-23-2005 At 08:25 am.
PLAT 43.60

BEARINGS BASED ON THE SE LINE OF THE 16.000 AC. BEING
N 47° 20' 38" E



PLAT ACCEPTED BY MADISON COUNTY ENGINEER

BY VE DATE 6-22-05
ACREAGE 0.3735 RESIDUAL 5.07731
LONDON 31-00055-001

I HEREBY CERTIFY THAT THIS PLAT REPRESENTS A FIELD SURVEY BY
NEIL BABB P.S. 5969