

# PLAT OF A SURVEY OF UNIT 37

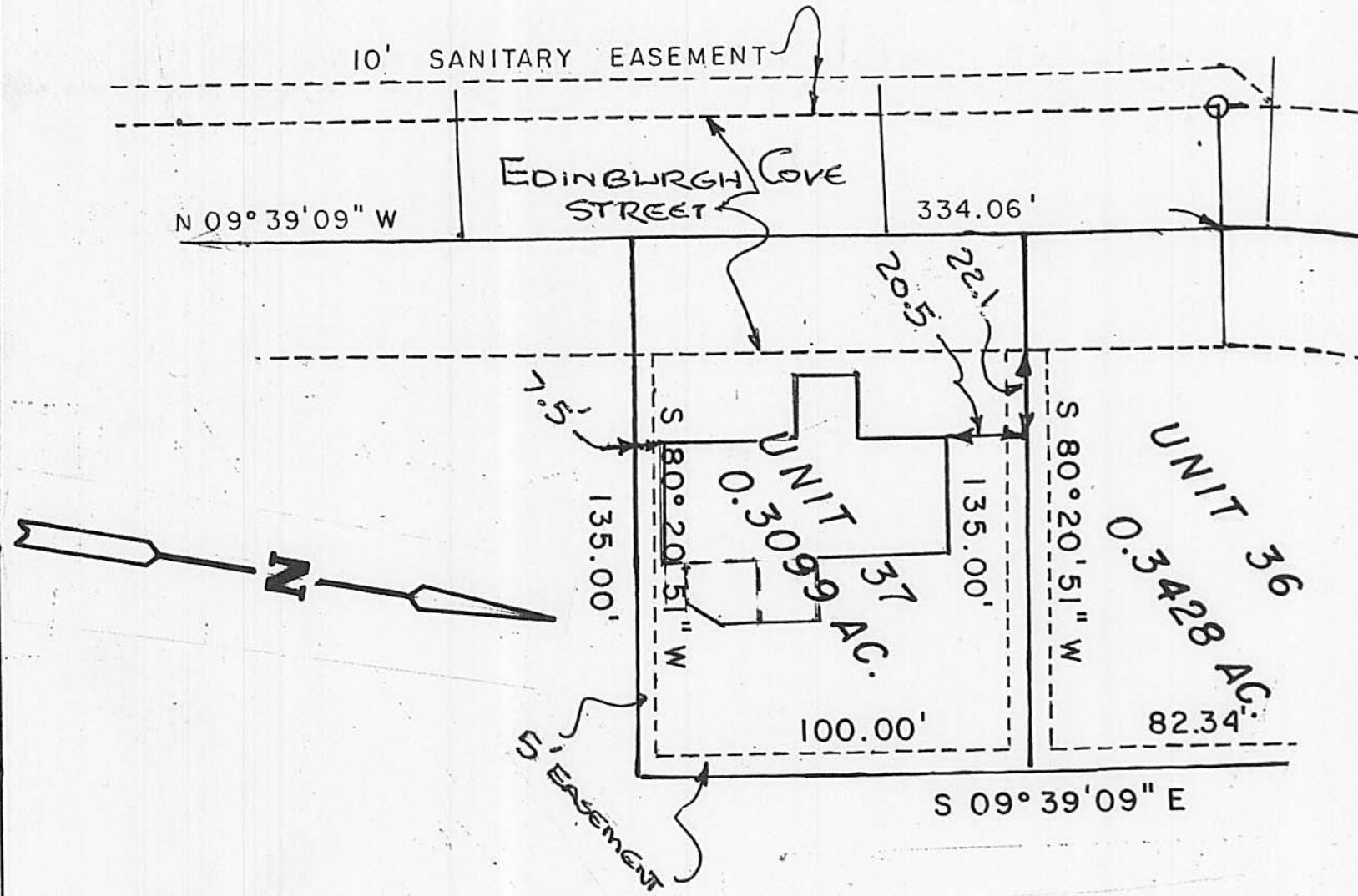
CONTAINING 0.3099 ACRES

# 1028 EDINBURGH COVE

EDINBURGH COVE PLANNED UNIT DEV.

CITY OF LONDON, OH APPROVED 28 SEPT 1999  
AND A REVISED PLAT ON 20 JULY 2004

WESLEY PARTNERS, O.R. 97, PG. 2005, 16.000 AC.  
NEW SURVEY SHOWS 16.0676 ACRES



Clifford C Saul 10-25-05  
CLIFFORD SAUL MANAGING PARTNER DATE

Jim Williamson / R Adams 10-27-05  
MADISON COUNTY AUDITOR DATE

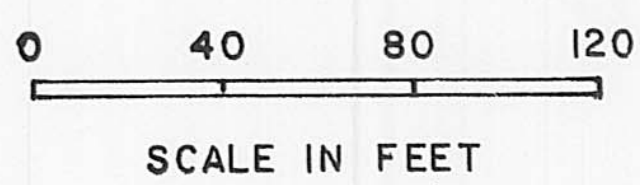
Charles E. Reed by  
Lindy Andrews, Deputy 10-27-05  
MADISON COUNTY RECORDER DATE

20050007371  
Filed for Record in  
MADISON COUNTY, OHIO  
CHARLES E REED  
10-27-2005 At 11:19 am.  
PLAT 43.60  
PLAT B-309

BEARINGS BASED ON THE SE LINE OF THE 16.000 AC. BEING  
N 47°20'38" E

--- EASEMENT LINES FOR PUBLIC  
AND PRIVATE UTILITIES FOR THE  
BENEFIT OF EDINBURGH COVE  
OWNERS ONLY.

EASEMENT FOR THE STREET IS 60 FT.  
RIGHT-OF-WAY



- LEGEND
- FOUND AS NOTED
  - SET IRON PIPES 3/4" IN DIA. BY 30" IN LENGTH WITH CAPS MARKED 5969

PLAT ACCEPTED BY MADISON COUNTY ENGINEER  
BY VE DATE 10-27-05  
ACREAGE 0.3099 Unit 37 RESIDUAL 4.7672  
LONDON 31-00055.001

I HEREBY CERTIFY THAT THIS  
PLAT REPRESENTS A FIELD  
SURVEY BY:  
Neil Babb 30/05  
NEIL BABB P.S. 5969

# PLAT OF A SURVEY OF UNIT 25

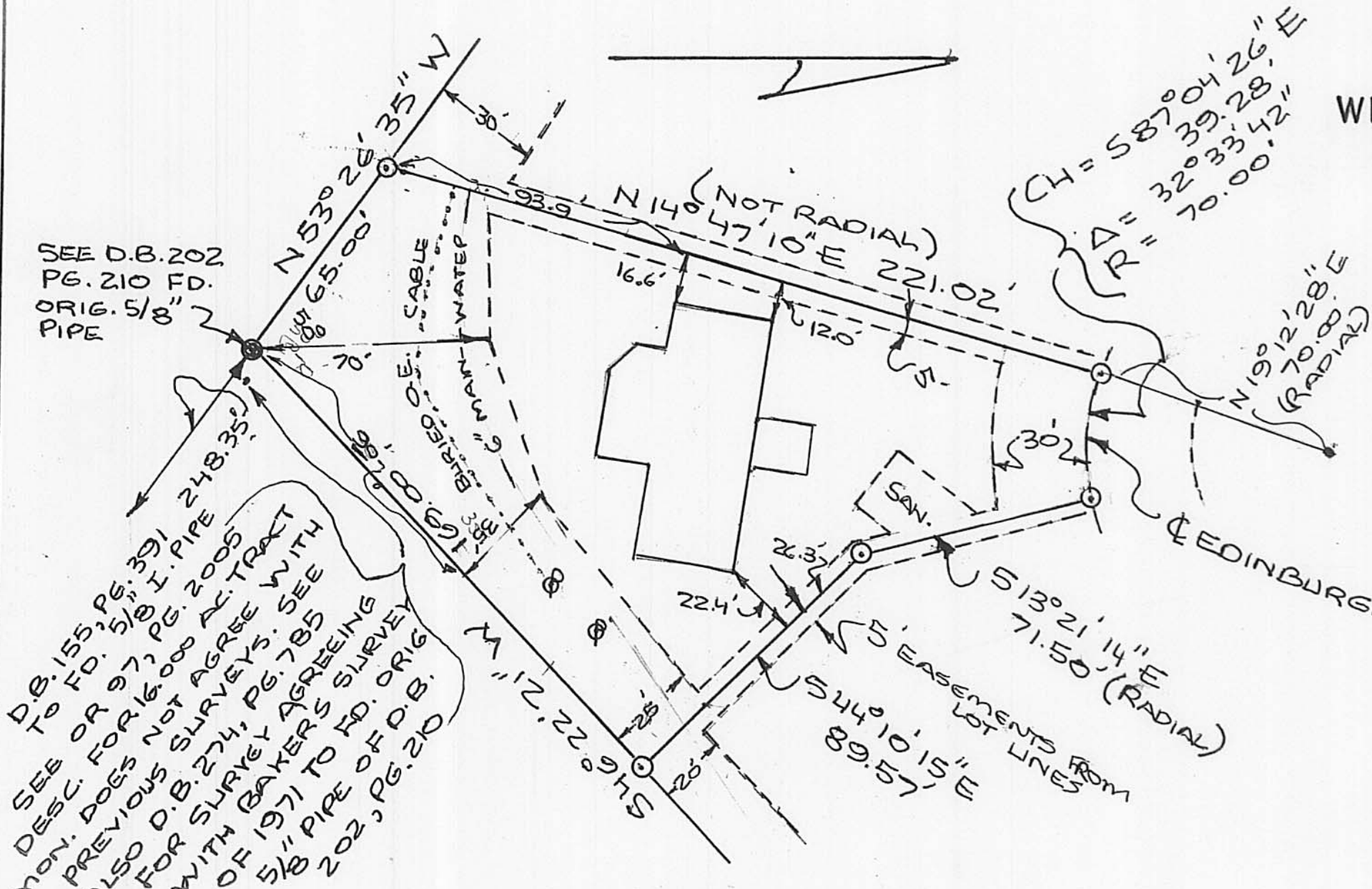
CONTAINING 0.5173 ACRES

# 1033 EDINBURGH COVE

EDINBURGH COVE PLANNED UNIT DEV.

CITY OF LONDON, OH APPROVED 28 SEPT 1999  
AND A REVISED PLAT ON 20 JULY 2004

WESLEY PARTNERS, O.R. 97, PG. 2005, 16.000 AC.  
NEW SURVEY SHOWS 16.0676 ACRES



Clifford C Saul 5-11-06  
CLIFFORD SAUL MANAGING PARTNER DATE

Jim Williamson - By: J. Muntz 5-15-06  
MADISON COUNTY AUDITOR DATE

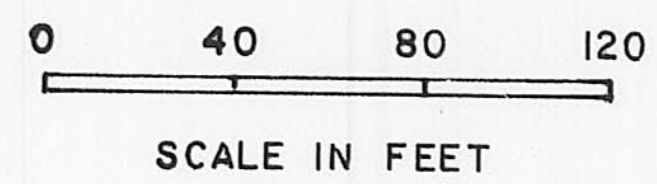
Charles E. Reed by Rachel Kimble 5-15-06  
MADISON COUNTY RECORDER DATE

20060002918  
Filed for Record in  
MADISON COUNTY, OHIO  
CHARLES E REED  
05-15-2006 At 10:28 am.  
PLAT 43.60  
B-311

BEARINGS BASED ON THE SE LINE OF THE 16.000 AC. BEING  
N 47°20'38" E

--- EASEMENT LINES FOR PUBLIC  
AND PRIVATE UTILITIES FOR THE  
BENEFIT OF EDINBURGH COVE  
OWNERS ONLY.

EASEMENT FOR THE STREET IS 60 FT.  
RIGHT-OF-WAY



- LEGEND
- FOUND AS NOTED
  - SET IRON PIPES 3/4" IN DIA. BY 30" IN LENGTH WITH CAPS MARKED 5969

PLAT ACCEPTED BY MADISON COUNTY ENGINEER  
BY VE DATE 5-12-06  
ACREAGE 0.5173 Unit 25 RESIDUAL 4.2499  
LONDON 01

I HEREBY CERTIFY THAT THIS  
PLAT REPRESENTS A FIELD  
SURVEY BY:  
Neil Babb 4/14/06  
NEIL BABB P.S. 5969