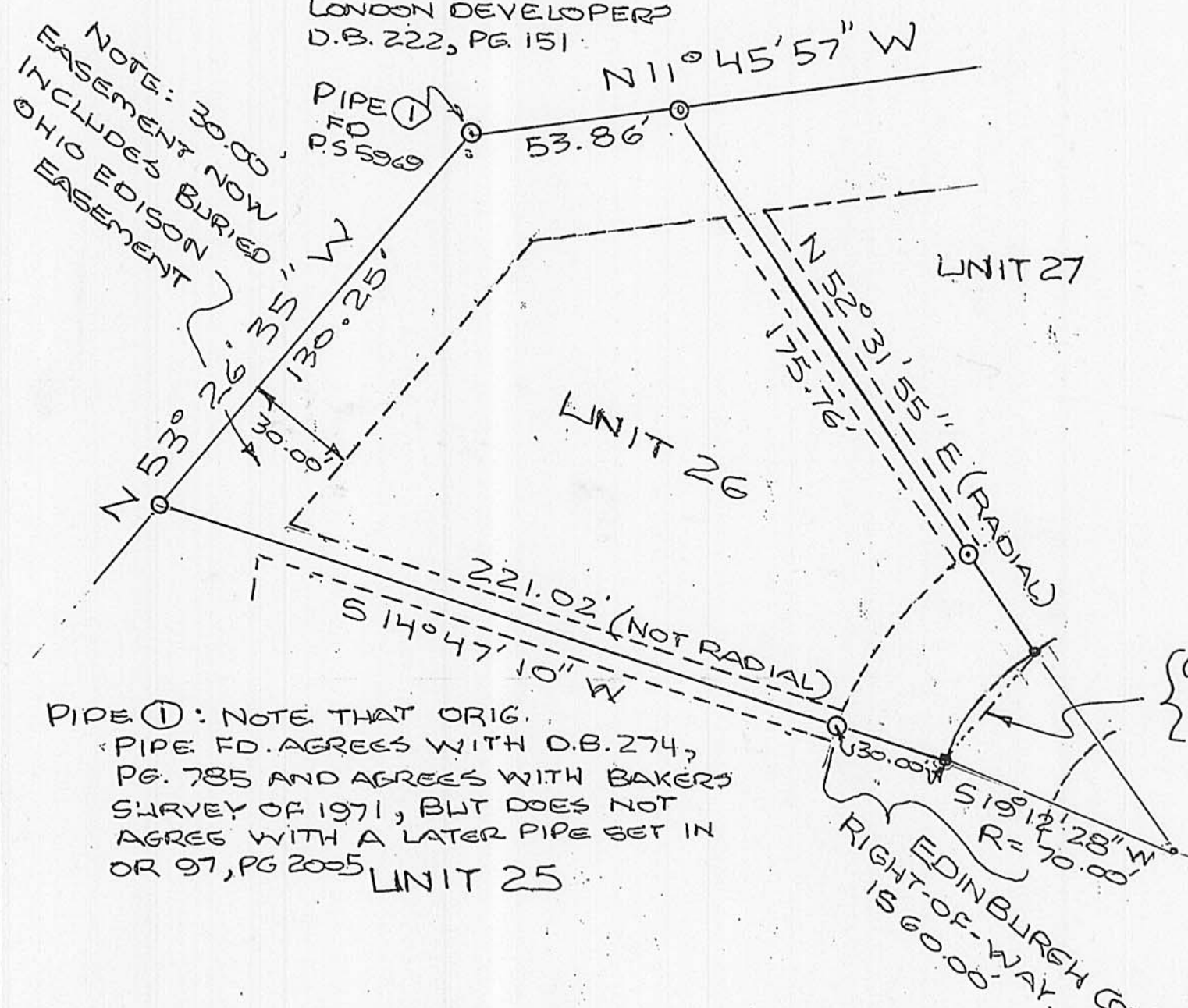


PLAT OF A SURVEY OF UNIT 26

CONTAINING 0.4981 ACRES

LONDON DEVELOPERS
D.B. 222, PG. 151



NOTE: 30.00' EASEMENT NOW INCLUDES BURIED OHIO EDISON EASEMENT

PIPE ①: NOTE THAT ORIG. PIPE FD. AGREES WITH D.B. 274, PG. 785 AND AGREES WITH BAKER'S SURVEY OF 1971, BUT DOES NOT AGREE WITH A LATER PIPE SET IN OR 97, PG. 2005

{ CH = S 54° 06' 47" E 40.15'
Δ = 33° 19' 27"
R = 70.00'

1031 EDINBURGH COVE

EDINBURGH COVE PLANNED UNIT DEV.

CITY OF LONDON, OH APPROVED 28 SEPT 1999
AND A REVISED PLAT ON 20 JULY 2004

WESLEY PARTNERS, O.R. 97, PG. 2005, 16.000 AC.
NEW SURVEY SHOWS 16.0676 ACRES

Clifford C Saul 7-11-06
CLIFFORD SAUL MANAGING PARTNER DATE

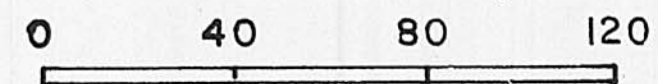
Jim Williamson 7-12-06
MADISON COUNTY AUDITOR DATE

Charles E Reed by Cindy Andrews 7-12-06
MADISON COUNTY RECORDER deputy DATE

20060004369
Filed for Record in
MADISON COUNTY, OHIO
CHARLES E REED
07-12-2006 At 10:57 am.
PLAT 43.60

SLID B-315

BEARINGS BASED ON THE SE LINE OF THE 16.000 AC. BEING
N 47° 20' 38" E



SCALE IN FEET

EASEMENT FOR THE STREET IS 60 FT.
RIGHT-OF-WAY

--- EASEMENT LINES FOR PUBLIC AND PRIVATE UTILITIES FOR THE BENEFIT OF EDINBURGH COVE OWNERS ONLY.

LEGEND

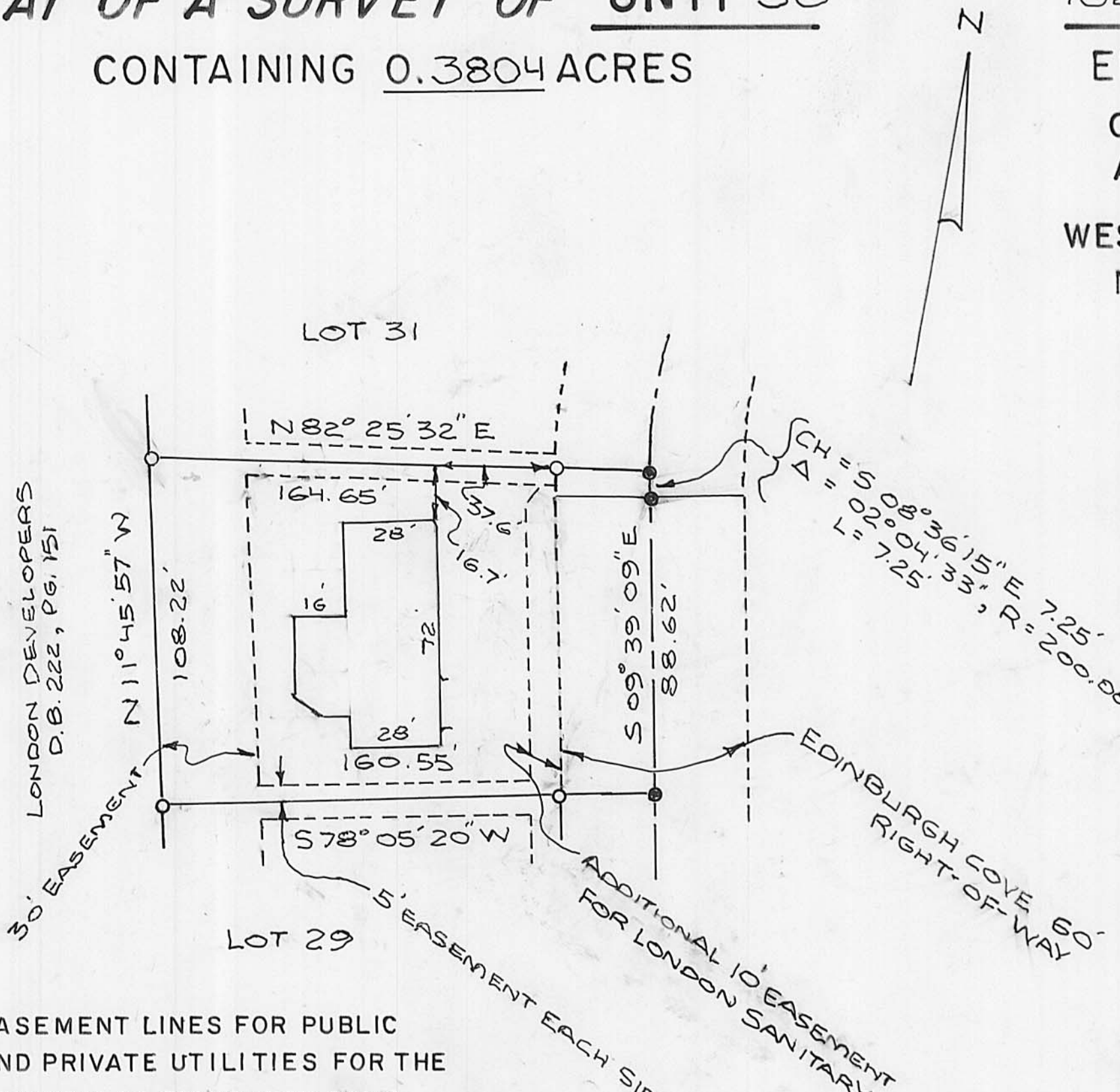
- FOUND AS NOTED
- SET IRON PIPES 3/4" IN DIA. BY 30" IN LENGTH WITH CAPS MARKED 5969

PLAT ACCEPTED BY MADISON COUNTY ENGINEER
BY LB DATE 7-11-06
ACREAGE 0.4981 RESIDUAL 3.7518
LONDON 31-00055.001

I HEREBY CERTIFY THAT THIS PLAT REPRESENTS A FIELD SURVEY BY
Neil Babb 4/14/06
NEIL BABB P.S. 5969

PLAT OF A SURVEY OF UNIT 30

CONTAINING 0.3804 ACRES



--- EASEMENT LINES FOR PUBLIC AND PRIVATE UTILITIES FOR THE BENEFIT OF EDINBURGH COVE OWNERS ONLY.

LEGEND

- FOUND AS NOTED
- SET IRON PIPES 3/4" IN DIA. BY 30" IN LENGTH WITH CAPS MARKED 5969

1023 EDINBURGH COVE

EDINBURGH COVE PLANNED UNIT DEV.

CITY OF LONDON, OH APPROVED 28 SEPT 1999
AND A REVISED PLAT ON 20 JULY 2004

WESLEY PARTNERS, O.R. 97, PG. 2005, 16.000 AC.
NEW SURVEY SHOWS 16.0676 ACRES

Clifford C Saul 7-17-06
CLIFFORD SAUL MANAGING PARTNER DATE

Jim Williamson 7-18-06
MADISON COUNTY AUDITOR DATE

Charles E Reed by Rachel Kimbler 7/19/06
MADISON COUNTY RECORDER Deputy DATE

20060004524
Filed for Record in
MADISON COUNTY, OHIO
CHARLES E REED
07-19-2006 At 11:02 am.
PLAT 43.60

B-316

BEARINGS BASED ON THE SE LINE OF THE 16.000 AC. BEING
N 47° 20' 38" E



SCALE IN FEET

PLAT ACCEPTED BY MADISON COUNTY ENGINEER
BY JB DATE 7-18-06
ACREAGE 0.3804 RESIDUAL 3.3714
LONDON 31-00055.001

I HEREBY CERTIFY THAT THIS PLAT REPRESENTS A FIELD SURVEY BY
Neil Babb 01/01/06
NEIL BABB P.S. 5969