

PLAT OF A SURVEY OF UNIT 31

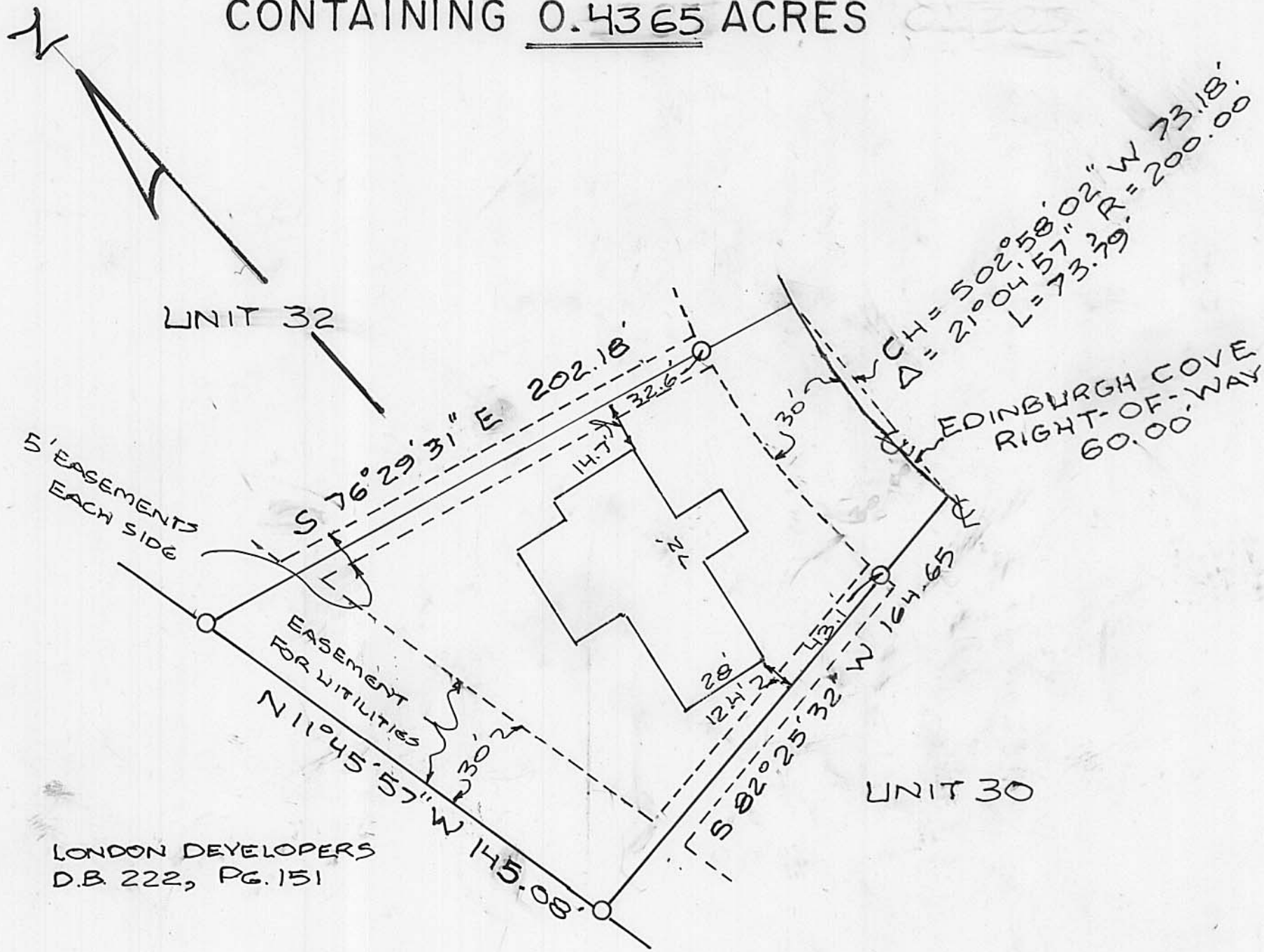
CONTAINING 0.4365 ACRES

1021 EDINBURGH COVE

EDINBURGH COVE PLANNED UNIT DEV.

CITY OF LONDON, OH APPROVED 28 SEPT 1999
AND A REVISED PLAT ON 20 JULY 2004

WESLEY PARTNERS, O.R. 97, PG. 2005, 16.000 AC.
NEW SURVEY SHOWS 16.0676 ACRES



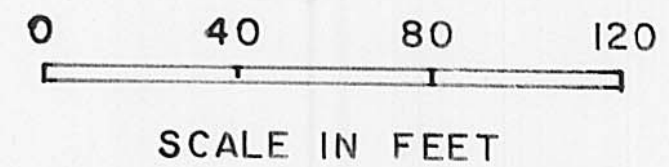
Clifford C. Saul 8-8-06
CLIFFORD SAUL MANAGING PARTNER DATE

Jim Williamson by: Jerry J. Guntz 8-11-06
MADISON COUNTY AUDITOR DATE

Charles E. Reed by Cindy Andrews 8-11-06
MADISON COUNTY RECORDER DATE

B-321 (PLAT)
200600005039
Filed for Record in
MADISON COUNTY, OHIO
CHARLES E REED
08-11-2006 At 10:47 am.
PLAT 43.60

BEARINGS BASED ON THE SE LINE OF THE 16.000 AC. BEING
N 47°20'38" E



----- EASEMENT LINES FOR PUBLIC
AND PRIVATE UTILITIES FOR THE
BENEFIT OF EDINBURGH COVE
OWNERS ONLY.

LEGEND

- FOUND AS NOTED
- SET IRON PIPES 3/4" IN DIA. BY 30"
IN LENGTH WITH CAPS MARKED 5969

PLAT ACCEPTED BY MADISON COUNTY ENGINEER
BY VE DATE 8-9-06
ACREAGE 0.4365 Unit 31 RESIDUAL 2.6983
LONDON 31-00055-001

I HEREBY CERTIFY THAT THIS
PLAT REPRESENTS A FIELD
SURVEY BY:
Neil Babb 02/06/06
NEIL BABB P.S. 5969

PLAT OF A SURVEY OF UNIT 33

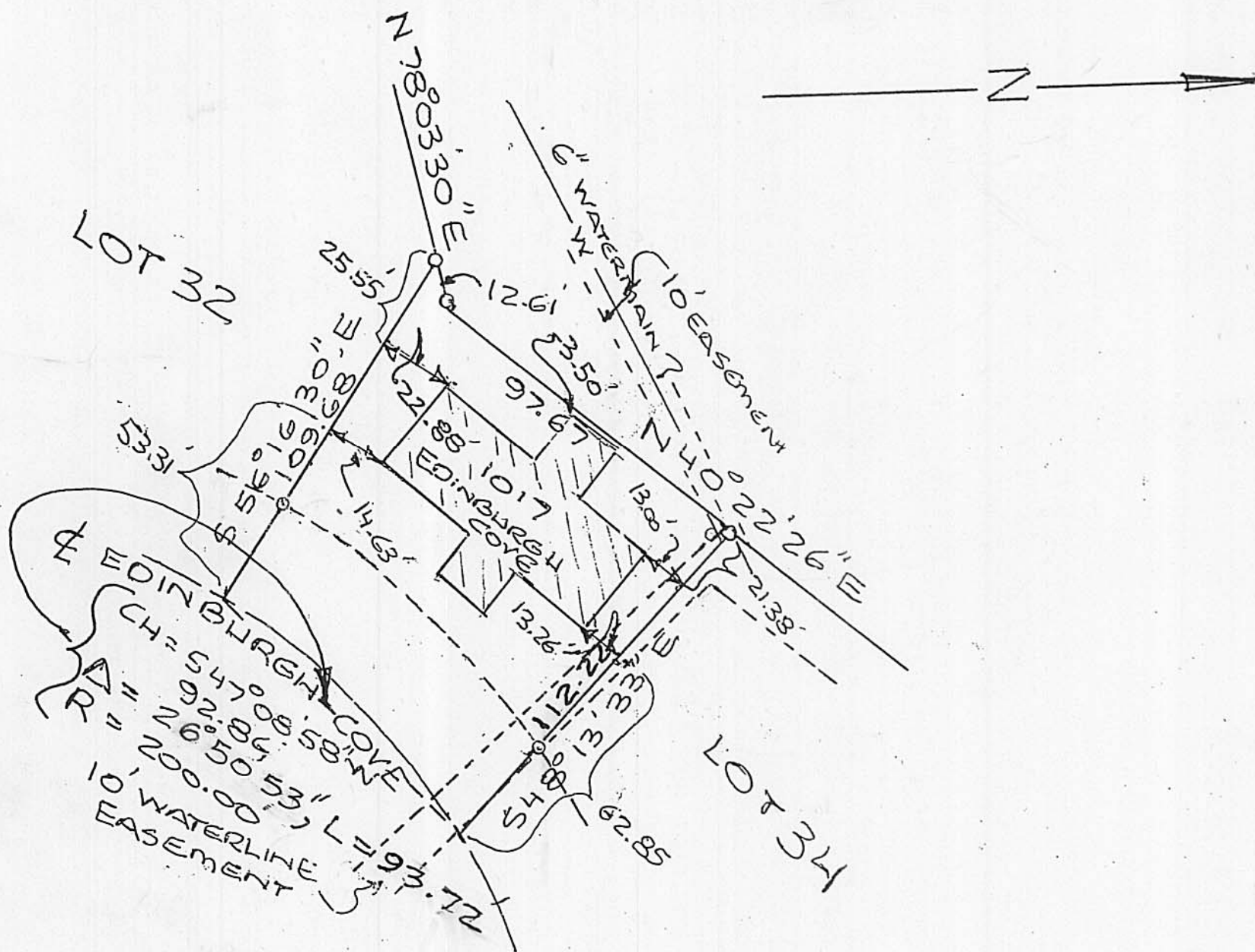
CONTAINING 0.2362 ACRES

**STREET ADDRESS: 1017
LOT 33 EDINBURGH COVE**

EDINBURGH COVE PLANNED UNIT DEV.

CITY OF LONDON, OH APPROVED 28 SEPT 1999
AND A REVISED PLAT ON 20 JULY 2004

WESLEY PARTNERS, O.R. 97, PG. 2005, 16.000 AC.
NEW SURVEY SHOWS 16.0676 ACRES



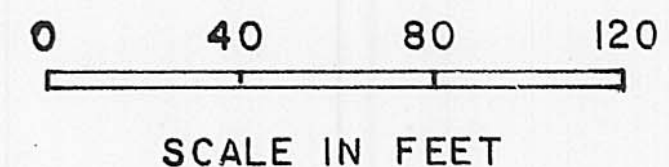
Clifford C. Saul 8-8-06
CLIFFORD SAUL MANAGING PARTNER DATE

Jim Williamson by: Jerry J. Guntz 8-11-06
MADISON COUNTY AUDITOR DATE

Charles E. Reed by Cindy Andrews 8-11-06
MADISON COUNTY RECORDER DATE

PLAT B-322
200600005040
Filed for Record in
MADISON COUNTY, OHIO
CHARLES E REED
08-11-2006 At 10:47 am.
PLAT 43.60

BEARINGS BASED ON THE SE LINE OF THE 16.000 AC. BEING
N 47°20'38" E



----- EASEMENT LINES FOR PUBLIC
AND PRIVATE UTILITIES FOR THE
BENEFIT OF EDINBURGH COVE
OWNERS ONLY.

EASEMENT FOR THE STREET IS 60 FT.
RIGHT-OF-WAY

LEGEND

- FOUND AS NOTED
- SET IRON PIPES 3/4" IN DIA. BY 30"
IN LENGTH WITH CAPS MARKED 5969

PLAT ACCEPTED BY MADISON COUNTY ENGINEER
BY VE DATE 8-9-06
ACREAGE 0.2362 Unit 33 RESIDUAL 3.1348
LONDON 31-00055-001

I HEREBY CERTIFY THAT THIS
PLAT REPRESENTS A FIELD
SURVEY BY:
Neil Babb 11/05/06
NEIL BABB P.S. 5969