

PLAT OF A SURVEY OF UNIT

CONTAINING 0. ACRES

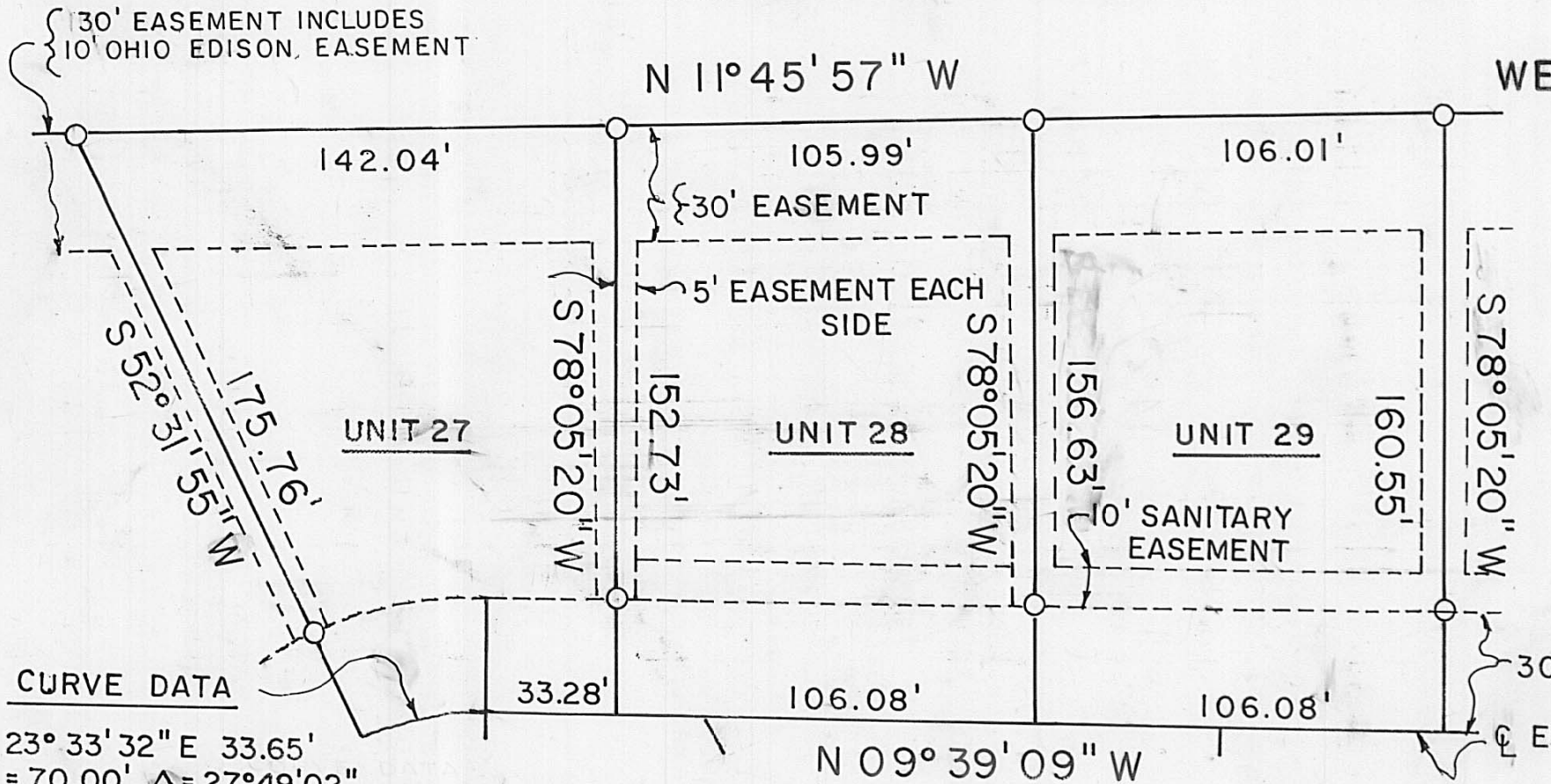
LONDON DEVELOPERS D.B. 222, PG 151

EDINBURGH COVE

EDINBURGH COVE PLANNED UNIT DEV.

CITY OF LONDON, OH APPROVED 28 SEPT 1999
AND A REVISED PLAT ON 20 JULY 2004

WESLEY PARTNERS, O.R. 97, PG. 2005, 16.000 AC.
NEW SURVEY SHOWS 16.0676 ACRES



Clifford C. Saul 9-14-06
CLIFFORD SAUL MANAGING PARTNER DATE

Jim Williamson by: Terry J. Guthrie 9-27-06
MADISON COUNTY AUDITOR DATE

Charles E. Reed by Rachel Kimbler 9-27-06
MADISON COUNTY RECORDER Deputy DATE

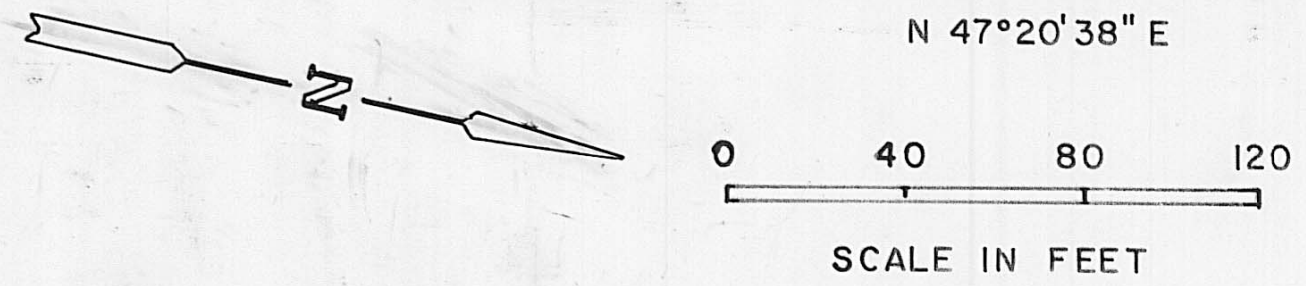
200600006146
Filed for Record in
MADISON COUNTY, OHIO
CHARLES E REED
09-27-2006 At 09:04 am.
PLAT 43.60
Slide 8-323

CURVE DATA
S 23° 33' 32" E 33.65'
R = 70.00', Δ = 27° 49' 02"
L = 33.99'

UNIT NO.	ACREAGE	ADDRESS
27	0.3707	1029
28	0.3764	1027
29	0.3859	1025

--- EASEMENT LINES FOR PUBLIC
AND PRIVATE UTILITIES FOR THE
BENEFIT OF EDINBURGH COVE
OWNERS ONLY.

BEARINGS BASED ON THE SE LINE OF THE 16.000 AC. BEING
N 47° 20' 38" E



LEGEND

- ⊙ FOUND AS NOTED
- SET IRON PIPES 3/4" IN DIA. BY 30" IN LENGTH WITH CAPS MARKED 5969

PLAT ACCEPTED BY MADISON COUNTY ENGINEER
BY VE DATE 9.19.06
ACREAGE Unit 27 0.3707 + Unit 28 0.3764 + Unit 29 0.3859 RESIDUAL 1.5653
LONDON 31-00655.00

I HEREBY CERTIFY THAT THIS
PLAT REPRESENTS A FIELD
SURVEY BY
Neil Babb 9/26/06
NEIL BABB P.S. 5969