

CONDOMINIUM DECLARATION
LIBERTY PARK
 CONDOMINIUM

SITUATED IN AND BEING PART OF
 VIRGINIA MILITARY SURVEY NO. 5802
 CITY OF LONDON, MADISON COUNTY, OHIO

RECORDING

Transferred this ____ day of _____, 2005.

Auditor, Madison County, Ohio

Filed for record this ____ day of _____, 2005, at _____, M.

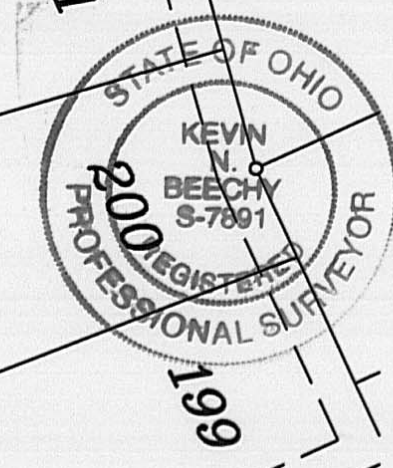
Fee \$ ____ File No. ____

Recorder, Madison County, Ohio

Recorded this ____ day of _____, 2005,

in Plat Cab. ____ Pages ____

Deputy Recorder, Madison County, Ohio



CERTIFICATION:
 I hereby certify that this drawing accurately reflects the location of the improvements and recorded easements.

Kevin Beechy 1/25/05 date
 Kevin Beechy
 Ohio Professional Surveyor No. 7891

CERTIFICATION:
 I hereby certify that these drawings accurately show each building as built or constructed.

Donald W. Schofield 1/28/05 date
 Donald W. Schofield
 Ohio Professional Architect No. 6111

LEGEND

- Iron Pin Set
- Iron Pin Found
- ▲ Railroad Spike Set
- △ Railroad Spike Found
- ▨ Limited Common Element

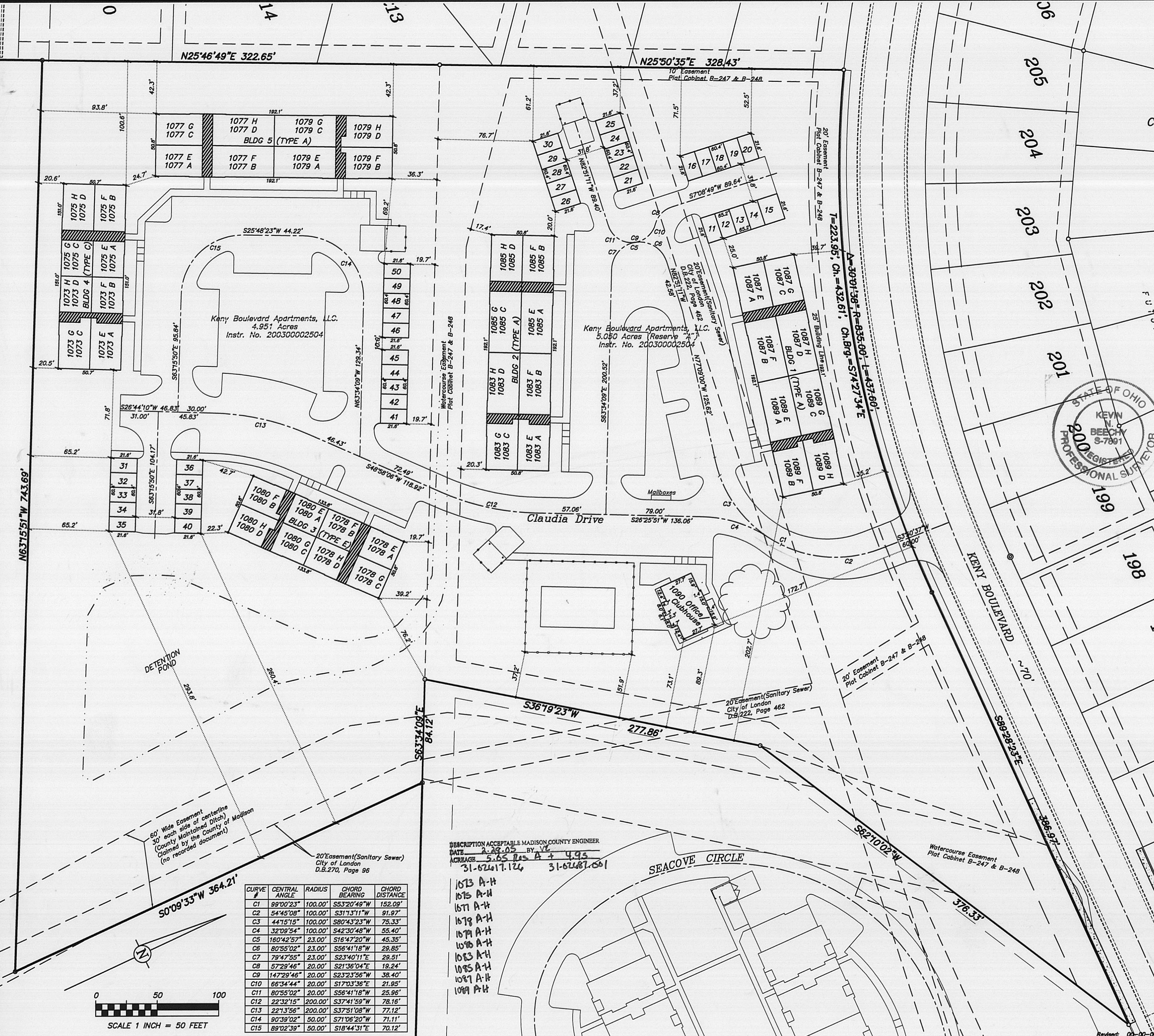
NOTES:
 Units A, B, C & D are 1st floor units,
 Units E, F, G & H are 2nd floor units.
 Areas not designated as units or Limited
 Common Elements are Common Elements.
 All garages, numbered 1 to 50 are exclusive
 use areas.
 All units are approximately 8 feet in height.

BASIS OF BEARINGS:
 The centerline of U.S. 42 (Lafayette Street) was
 assigned a bearing of South 39°34'19" West as
 described in Deed Volume 271, Page 453 of the
 public records of the Madison County Recorder's
 Office, Madison County, Ohio.

Geo-Graphics, Inc.
 Land Surveying & Civil Engineering
 3331 Livingston Avenue Columbus, Ohio 43227
 Phone: 614-231-2016 Fax: 614-231-2018

THE DRAWINGS
 LIBERTY PARK CONDOMINIUM
 EXHIBIT "C" TO THE DECLARATION
 LIBERTY PARK CONDOMINIUM

SCALE 1"=50'	DRAWN KB	CHECKED REB	DATE 01-14-05	SHEET 1 OF 1
-----------------	-------------	----------------	------------------	-----------------



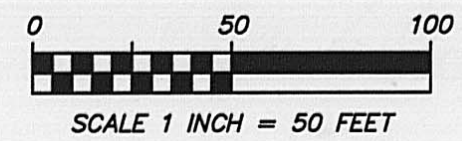
60' Wide Easement
 30' each side of centerline
 (County Maintained Ditch)
 Claimed by the County of Madison
 (no recorded document)

20' Easement (Sanitary Sewer)
 City of London
 D.B.270, Page 96

DESCRIPTION ACCEPTABLE MADISON COUNTY ENGINEER
 DATE 2-29-05 BY VL
 ACREAGE 5.65 Plus A + 4.95
 31-62417.124 31-62487.661

CURVE #	CENTRAL ANGLE	RADIUS	CHORD BEARING	CHORD DISTANCE
C1	99°00'23"	100.00'	S53°20'49"W	152.09'
C2	54°45'08"	100.00'	S31°13'11"W	91.97'
C3	44°15'15"	100.00'	S80°43'23"W	75.33'
C4	32°09'54"	100.00'	S42°30'48"W	55.40'
C5	180°42'57"	23.00'	S16°47'20"W	45.35'
C6	80°55'02"	23.00'	S56°41'18"W	28.85'
C7	79°47'55"	23.00'	S23°40'11"E	29.51'
C8	57°29'46"	20.00'	S21°36'04"E	19.24'
C9	147°29'46"	20.00'	S23°23'56"W	38.40'
C10	66°34'44"	20.00'	S17°03'36"E	21.95'
C11	80°55'02"	20.00'	S56°41'18"W	25.96'
C12	22°32'15"	200.00'	S37°41'59"W	78.16'
C13	22°13'56"	200.00'	S37°51'08"W	77.12'
C14	90°39'02"	50.00'	S71°06'20"W	71.11'
C15	89°02'39"	50.00'	S18°44'31"E	70.12'

- 1073 A-H
- 1075 A-H
- 1077 A-H
- 1079 A-H
- 1083 A-H
- 1085 A-H
- 1087 A-H
- 1089 A-H



SCALE 1 INCH = 50 FEET

Revised: 00-00-00