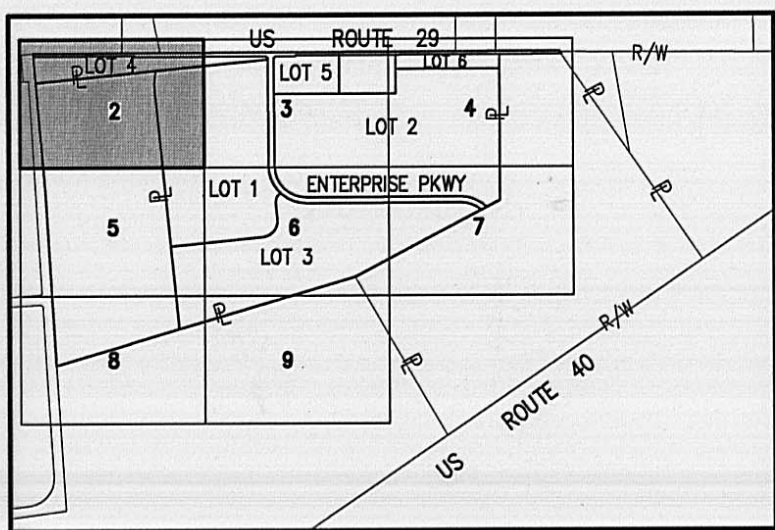
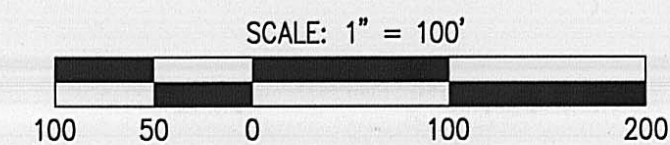


SUBDIVISION OF
PARK 70 AT WEST JEFFERSON PHASE I
 AND DEDICATION OF
ENTERPRISE PARKWAY



INDEX MAP
NTS

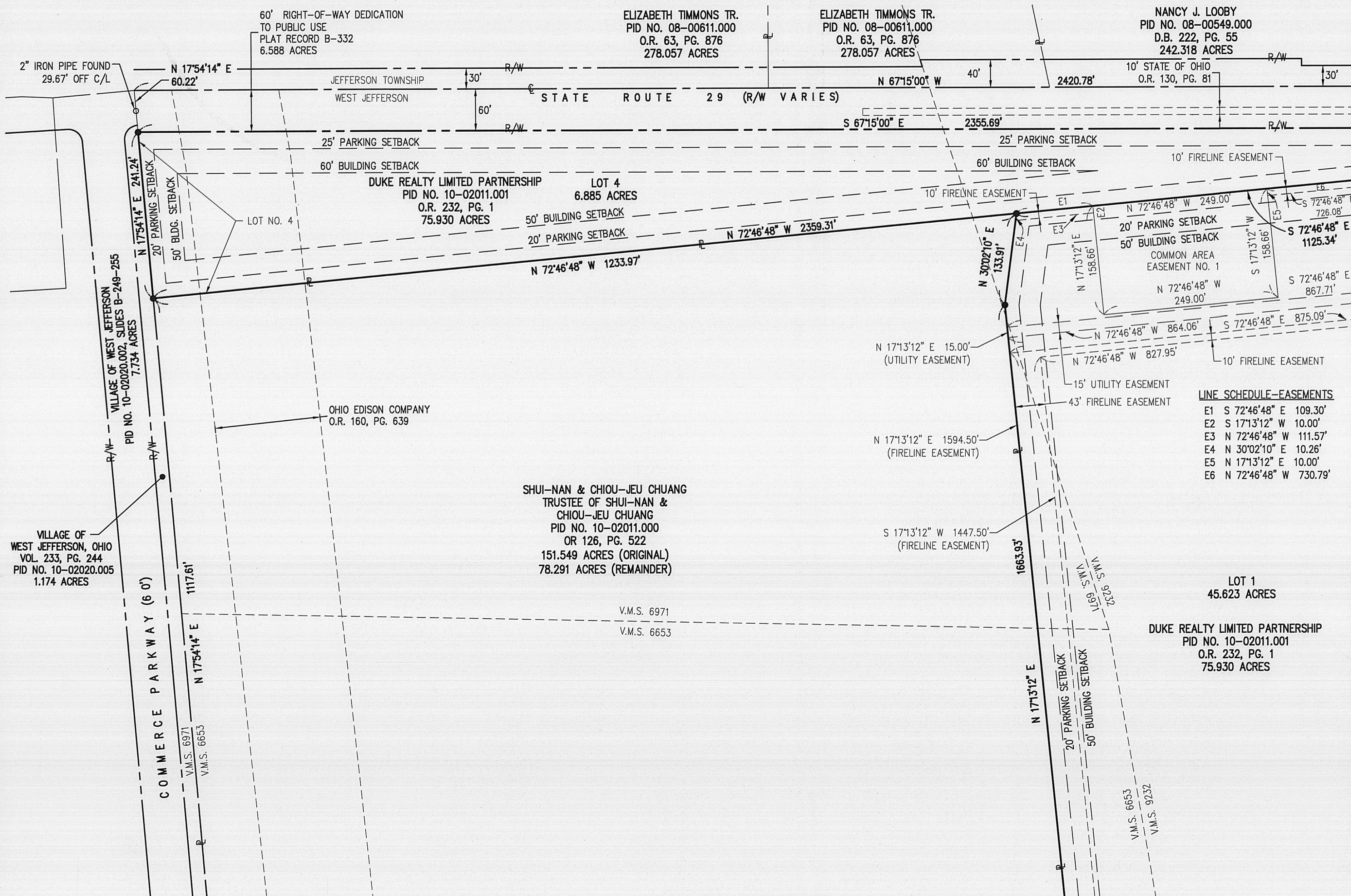


BASIS OF BEARING

ARE BASED ON THE CENTERLINE OF STATE ROUTE 29, NORTH 67 DEGREES 15 MINUTES 00 SECONDS WEST. BASIS REFERENCES A RECORD LEGAL DESCRIPTION RECORDED IN O.R. VOLUME 126, PAGE 522

SYMBOLS AND ABBREVIATIONS

- 5/8"x30" REBAR SET W/ YELLOW I.D. CAP MARKED "BRH GROUP"
- 1" REBAR SET
- ▲ RAILROAD SPIKE SET
- MAG NAIL SET
- FOUND, AS LABELED
- △ RAILROAD SPIKE FOUND
- ⊠ MONUMENT FOUND
- R/W RIGHT-OF-WAY LINE
- ⊕ CENTERLINE
- ⊔ PROPERTY LINE
- V.M.S. VIRGINIA MILITARY SURVEY
- PRK. SB. PARKING SETBACK
- BLDG. SB. BUILDING SETBACK



LINE SCHEDULE-EASEMENTS

E1	S 72°46'48" E	109.30'
E2	S 17°13'12" W	10.00'
E3	N 72°46'48" W	111.57'
E4	N 30°02'10" E	10.26'
E5	N 17°13'12" E	10.00'
E6	N 72°46'48" W	730.79'

MATCHLINE SHEET 3 OF 9

MATCHLINE SHEET 5 OF 9

PREPARED BY:

BRH
Group, Inc.

Engineering & Surveying

705-F Lakeview Plaza Boulevard
 Worthington, Ohio 43085-4779
 Phone: (614) 841-9500
 Fax: (614) 841-0170
 Email: info@brhgroup.com