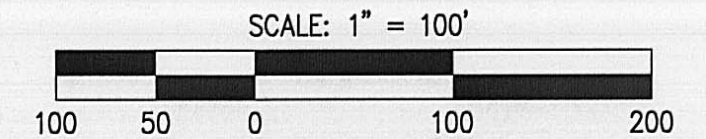
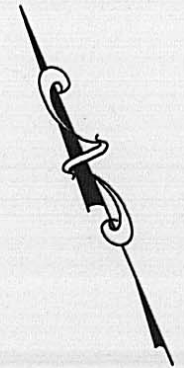


SUBDIVISION OF PARK 70 AT WEST JEFFERSON PHASE I AND DEDICATION OF ENTERPRISE PARKWAY

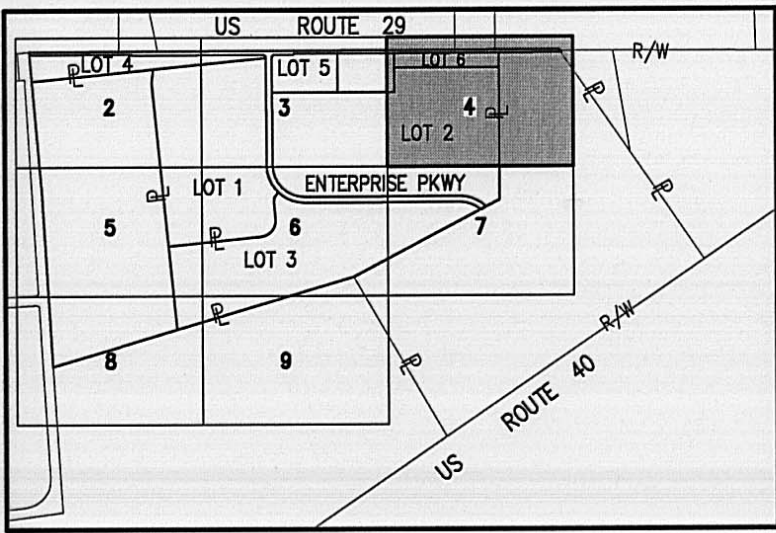


BASIS OF BEARING

ARE BASED ON THE CENTERLINE OF STATE ROUTE 29, NORTH 67 DEGREES 15 MINUTES 00 SECONDS WEST. BASIS REFERENCES A RECORD LEGAL DESCRIPTION RECORDED IN O.R. VOLUME 126, PAGE 522

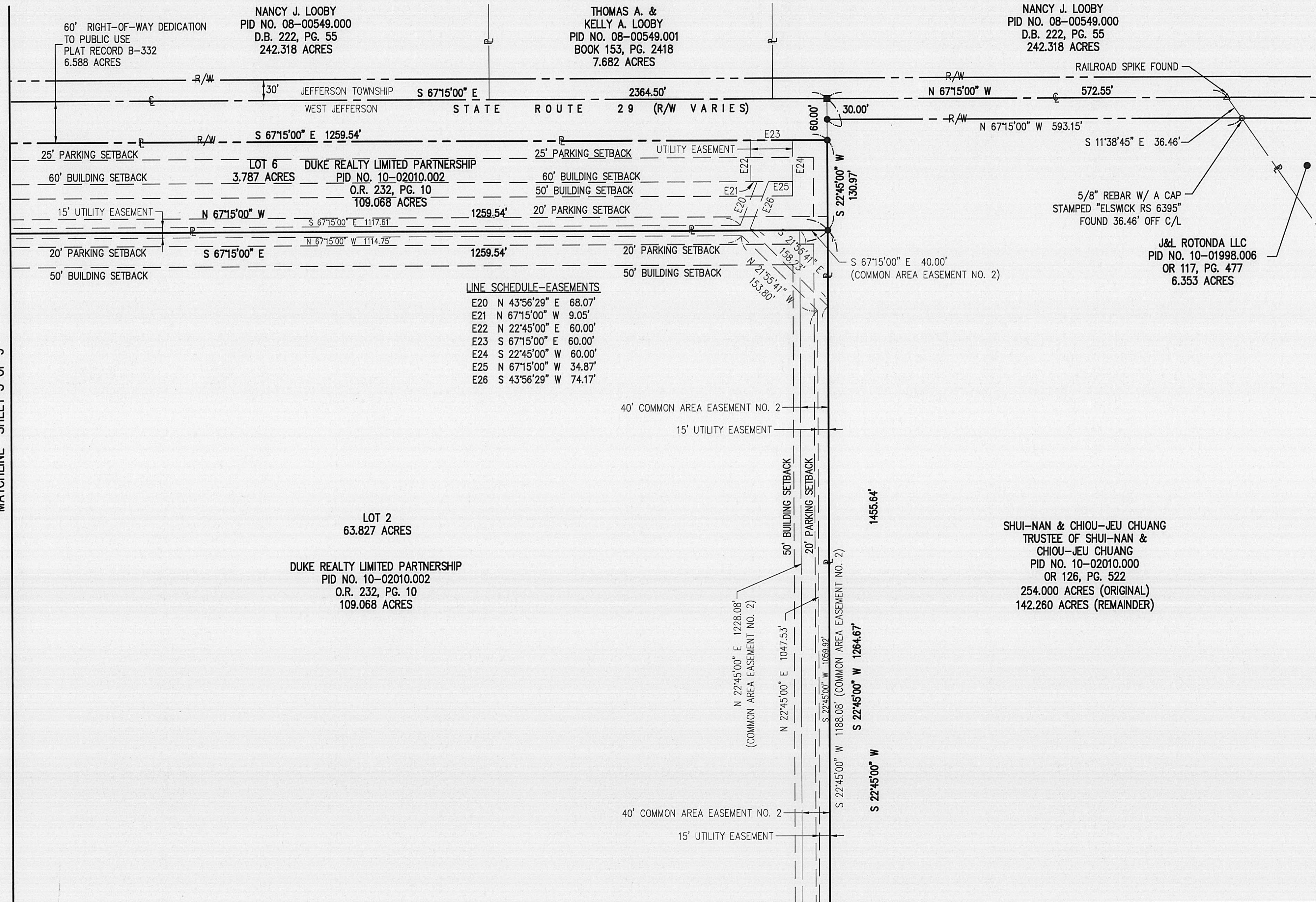
SYMBOLS AND ABBREVIATIONS

- 5/8"x30" REBAR SET W/ YELLOW I.D. CAP MARKED "BRH GROUP"
- ⬢ 1" REBAR SET
- ▲ RAILROAD SPIKE SET
- MAG NAIL SET
- FOUND, AS LABELED
- △ RAILROAD SPIKE FOUND
- ⊠ MONUMENT FOUND
- R/W RIGHT-OF-WAY LINE
- ⊕ CENTERLINE
- ⊔ PROPERTY LINE
- V.M.S. VIRGINIA MILITARY SURVEY
- PRK. SB. PARKING SETBACK
- BLDG. SB. BUILDING SETBACK



INDEX MAP
NTS

MATCHLINE SHEET 3 OF 9



LINE SCHEDULE-EASEMENTS

E20	N 43°56'29" E	68.07'
E21	N 67°15'00" W	9.05'
E22	N 22°45'00" E	60.00'
E23	S 67°15'00" E	60.00'
E24	S 22°45'00" W	60.00'
E25	N 67°15'00" W	34.87'
E26	S 43°56'29" W	74.17'

N 22°45'00" E 1228.08' (COMMON AREA EASEMENT NO. 2)
 N 22°45'00" E 1047.53'
 S 22°45'00" W 1069.92'
 S 22°45'00" W 1188.08' (COMMON AREA EASEMENT NO. 2)
 S 22°45'00" W 1264.67'
 S 22°45'00" W

MATCHLINE SHEET 7 OF 9

PREPARED BY:
BRH
 Group, Inc.
 Engineering & Surveying
 705-F Lakeview Plaza Boulevard
 Worthington, Ohio 43085-4779
 Phone: (614) 841-9500
 Fax: (614) 841-0170
 Email: info@brhgroup.com