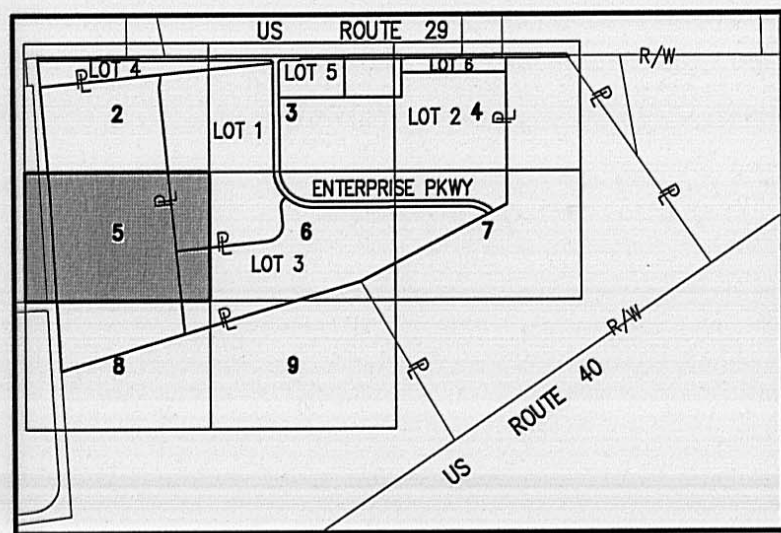
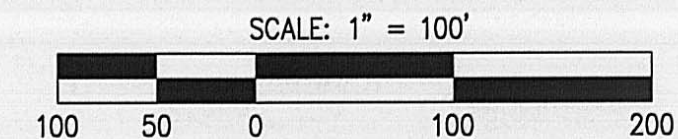
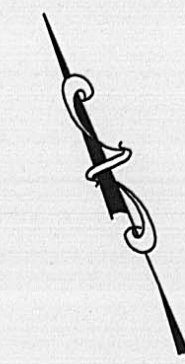


SUBDIVISION OF
PARK 70 AT WEST JEFFERSON PHASE I
 AND DEDICATION OF
ENTERPRISE PARKWAY



INDEX MAP
NTS

MATCHLINE SHEET 2 OF 9

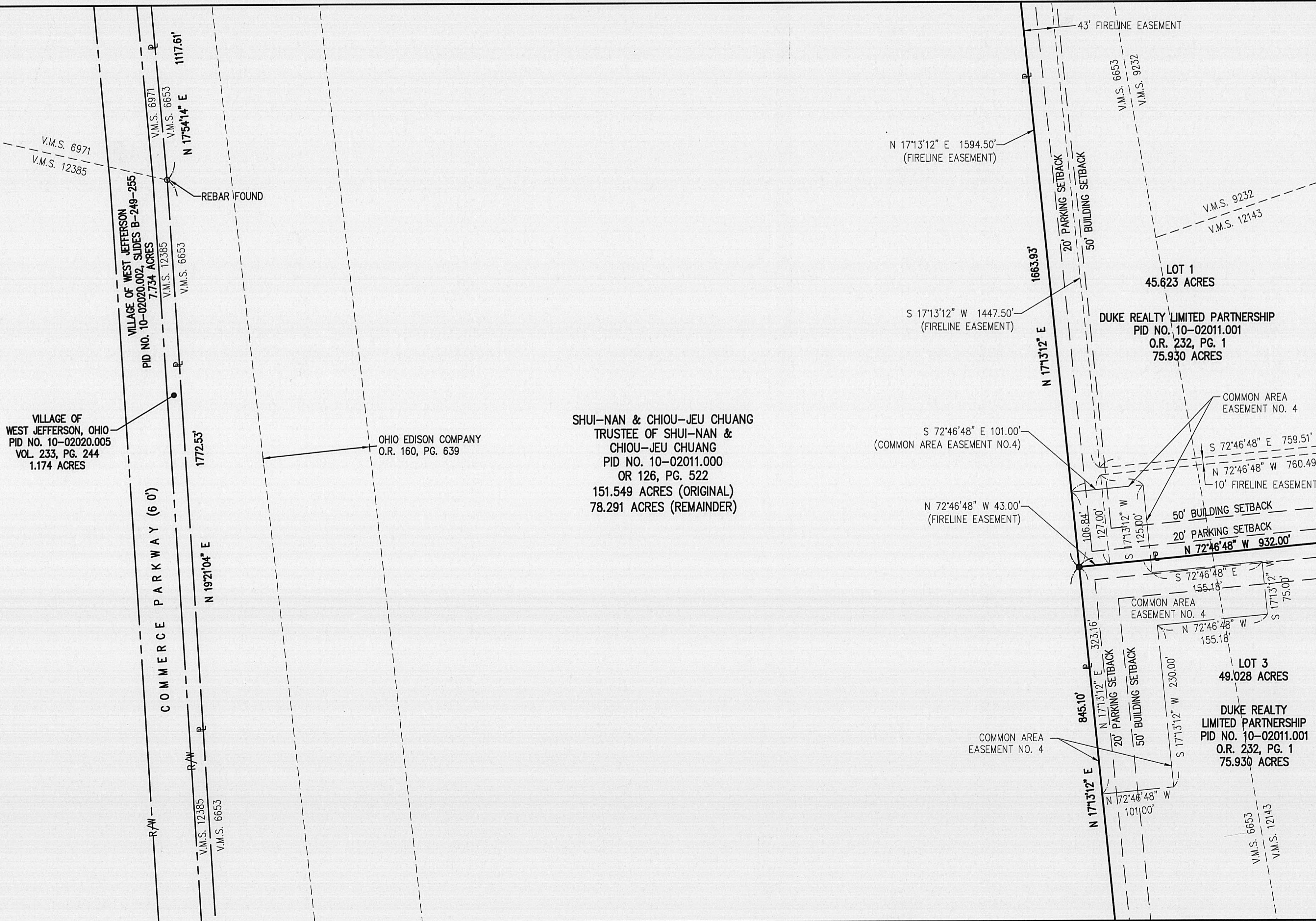


BASIS OF BEARING

ARE BASED ON THE CENTERLINE OF STATE ROUTE 29, NORTH 67 DEGREES 15 MINUTES 00 SECONDS WEST. BASIS REFERENCES A RECORD LEGAL DESCRIPTION RECORDED IN O.R. VOLUME 126, PAGE 522

SYMBOLS AND ABBREVIATIONS

- 5/8"x30" REBAR SET W/ YELLOW I.D. CAP MARKED "BRH GROUP"
- ⬢ 1" REBAR SET
- ▲ RAILROAD SPIKE SET
- MAG NAIL SET
- FOUND, AS LABELED
- △ RAILROAD SPIKE FOUND
- ⊠ MONUMENT FOUND
- R/W RIGHT-OF-WAY LINE
- ⊕ CENTERLINE
- ⊔ PROPERTY LINE
- V.M.S. VIRGINIA MILITARY SURVEY
- PRK. SB. PARKING SETBACK
- BLDG. SB. BUILDING SETBACK



MATCHLINE SHEET 6 OF 9

MATCHLINE SHEET 8 OF 9

PREPARED BY:

BRH
Group, Inc.
 Engineering & Surveying
 705-F Lakeview Plaza Boulevard
 Worthington, Ohio 43085-4779
 Phone: (614) 841-9500
 Fax: (614) 841-0170
 Email: info@brhgroup.com