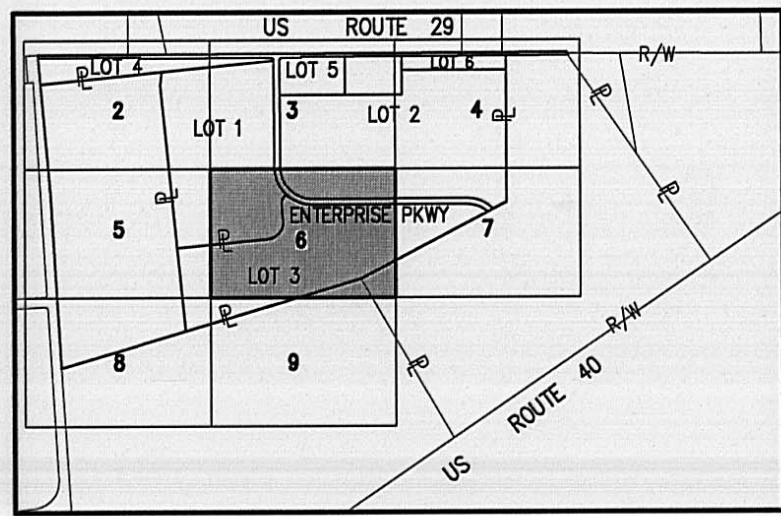
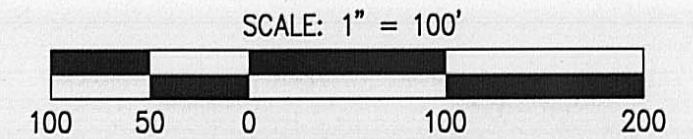


SUBDIVISION OF  
**PARK 70 AT WEST JEFFERSON PHASE I**  
 AND DEDICATION OF  
**ENTERPRISE PARKWAY**



INDEX MAP  
NTS

MATCHLINE SHEET 3 OF 9

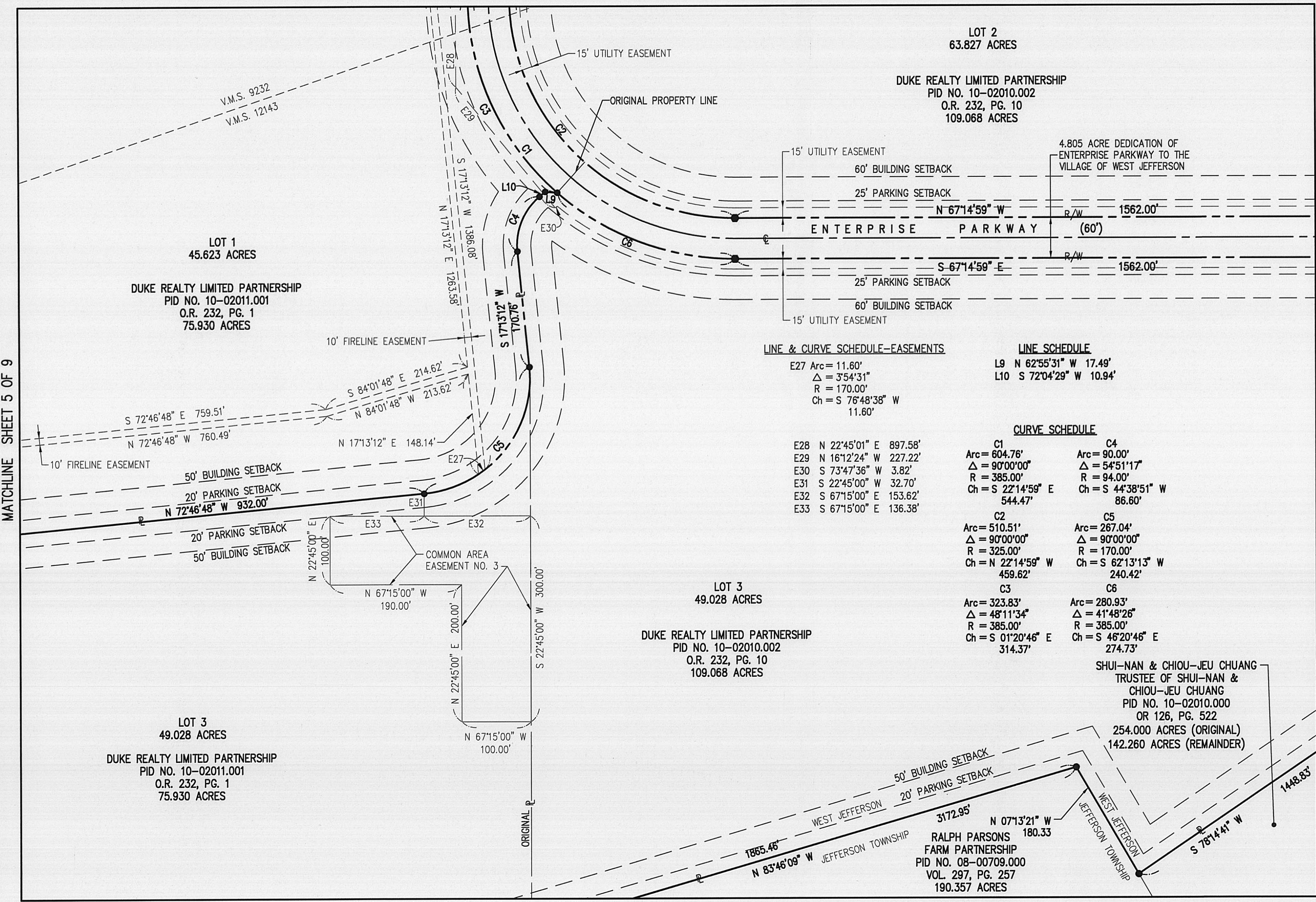


**BASIS OF BEARING**

ARE BASED ON THE CENTERLINE OF STATE ROUTE 29, NORTH 67 DEGREES 15 MINUTES 00 SECONDS WEST. BASIS REFERENCES A RECORD LEGAL DESCRIPTION RECORDED IN O.R. VOLUME 126, PAGE 522

**SYMBOLS AND ABBREVIATIONS**

- 5/8"x30" REBAR SET W/ YELLOW I.D. CAP MARKED "BRH GROUP"
- 1" REBAR SET
- ▲ RAILROAD SPIKE SET
- MAG NAIL SET
- FOUND, AS LABELED
- △ RAILROAD SPIKE FOUND
- ⊠ MONUMENT FOUND
- R/W RIGHT-OF-WAY LINE
- ⊕ CENTERLINE
- ⊖ PROPERTY LINE
- V.M.S. VIRGINIA MILITARY SURVEY
- PRK. SB. PARKING SETBACK
- BLDG. SB. BUILDING SETBACK



**LINE & CURVE SCHEDULE-EASEMENTS**

E27 Arc= 11.60'  
 Δ = 3'54'31"  
 R = 170.00'  
 Ch = S 76°48'38" W  
 11.60'

**LINE SCHEDULE**

L9 N 62°55'31" W 17.49'  
 L10 S 72°04'29" W 10.94'

**CURVE SCHEDULE**

E28 N 22°45'01" E 897.58'	C1 Arc= 604.76' Δ = 90°00'00" R = 385.00' Ch = S 22°14'59" E 544.47'	C4 Arc= 90.00' Δ = 54°51'17" R = 94.00' Ch = S 44°38'51" W 86.60'
E29 N 16°12'24" W 227.22'	C2 Arc= 510.51' Δ = 90°00'00" R = 325.00' Ch = N 22°14'59" W 459.62'	C5 Arc= 267.04' Δ = 90°00'00" R = 170.00' Ch = S 62°13'13" W 240.42'
E30 S 73°47'36" W 3.82'	C3 Arc= 323.83' Δ = 48°11'34" R = 385.00' Ch = S 01°20'46" E 314.37'	C6 Arc= 280.93' Δ = 41°48'26" R = 385.00' Ch = S 46°20'46" E 274.73'
E31 S 22°45'00" W 32.70'		
E32 S 67°15'00" E 153.62'		
E33 S 67°15'00" E 136.38'		

MATCHLINE SHEET 7 OF 9

MATCHLINE SHEET 5 OF 9

MATCHLINE SHEET 9 OF 9

PREPARED BY:



Engineering & Surveying  
 705-F Lakeview Plaza Boulevard  
 Worthington, Ohio 43085-4779  
 Phone: (614) 841-9500  
 Fax: (614) 841-0170  
 Email: info@brhgroup.com

SHEET

6

OF 9