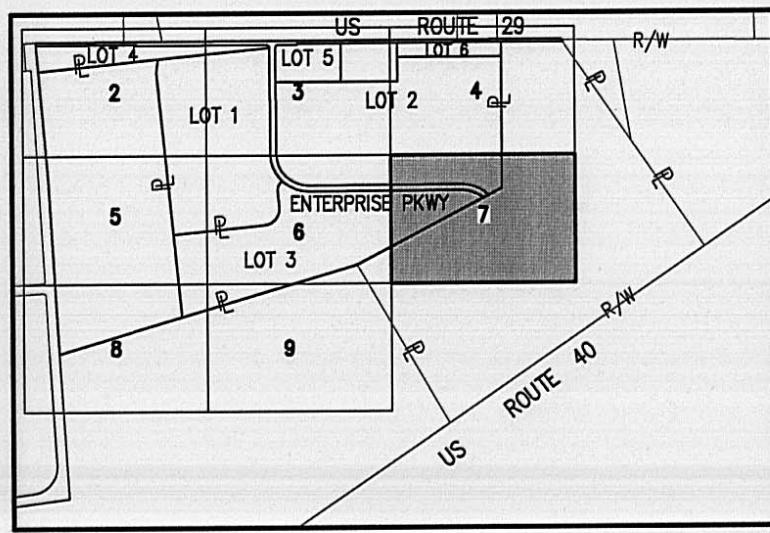
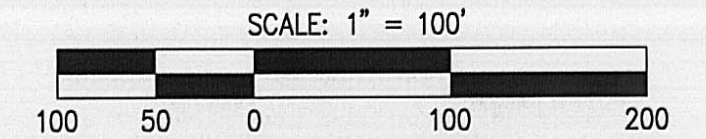
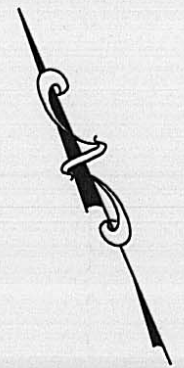


SUBDIVISION OF  
**PARK 70 AT WEST JEFFERSON PHASE I**  
 AND DEDICATION OF  
**ENTERPRISE PARKWAY**

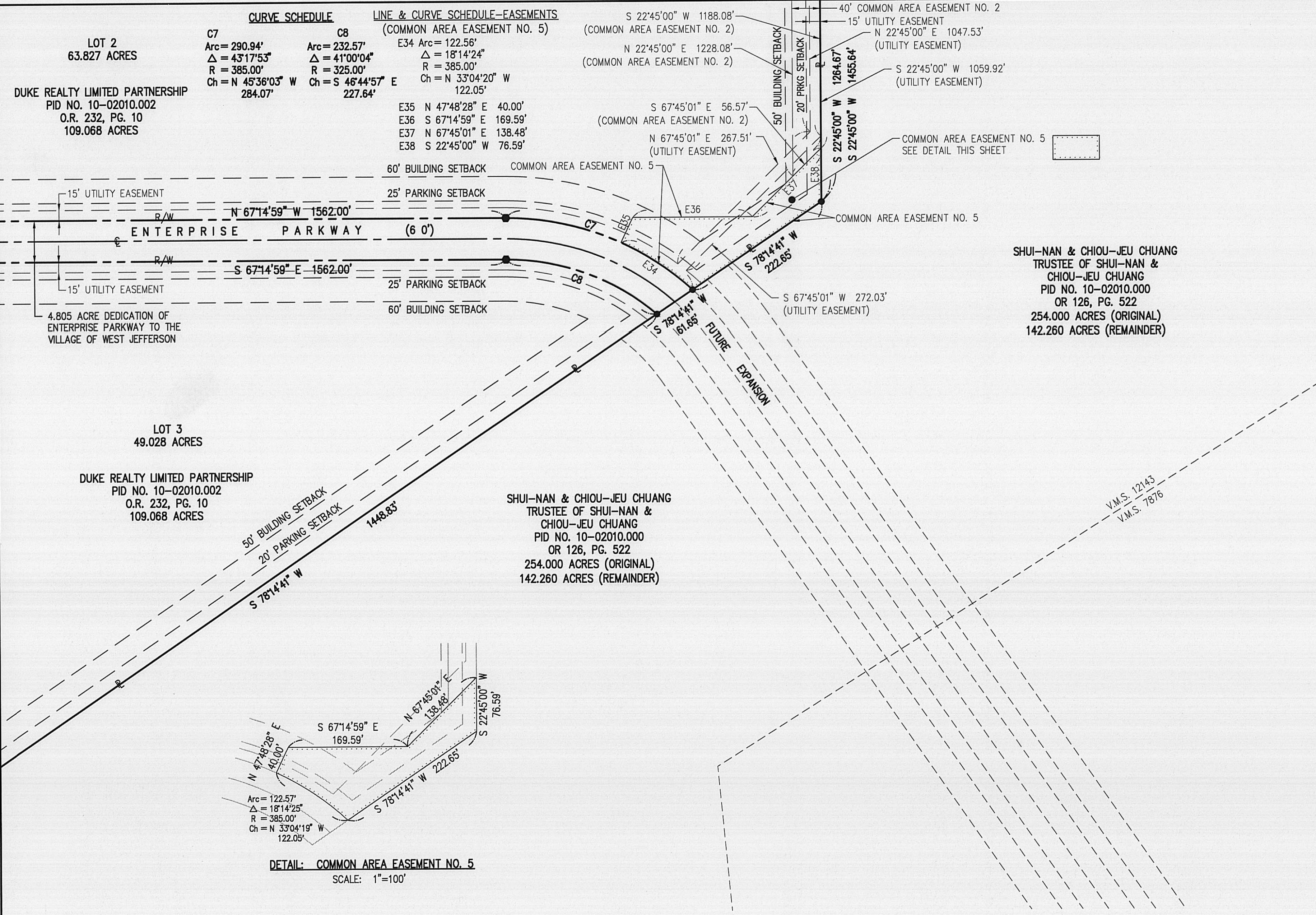


INDEX MAP  
NTS



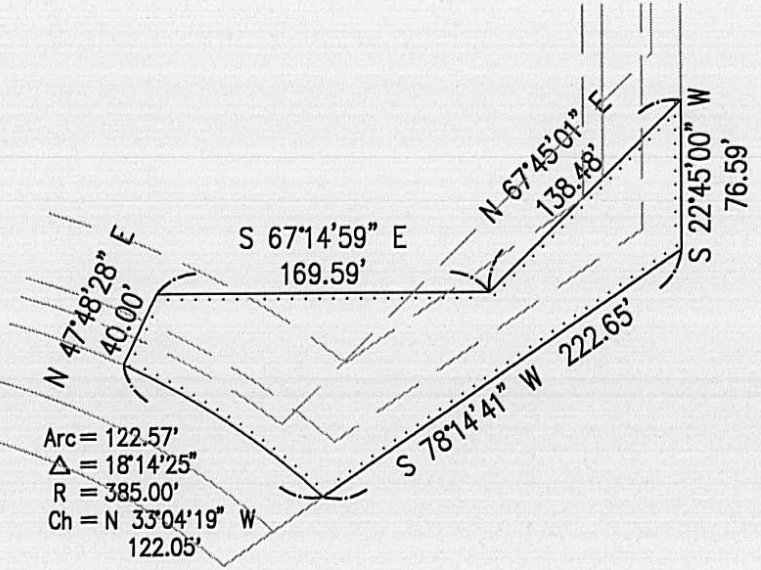
MATCHLINE SHEET 4 OF 9

MATCHLINE SHEET 6 OF 9



CURVE SCHEDULE		LINE & CURVE SCHEDULE-EASEMENTS	
<b>C7</b>	<b>C8</b>	<b>(COMMON AREA EASEMENT NO. 5)</b>	
Arc = 290.94'	Arc = 232.57'	E34 Arc = 122.56'	(COMMON AREA EASEMENT NO. 2)
Δ = 43°17'53"	Δ = 41°00'04"	Δ = 18°14'24"	(COMMON AREA EASEMENT NO. 2)
R = 385.00'	R = 325.00'	R = 385.00'	
Ch = N 45°36'03" W 284.07'	Ch = S 46°44'57" E 227.64'	Ch = N 33°04'20" W 122.05'	
		E35 N 47°48'28" E 40.00'	
		E36 S 67°14'59" E 169.59'	
		E37 N 67°45'01" E 138.48'	
		E38 S 22°45'00" W 76.59'	

- BASIS OF BEARING**  
 ARE BASED ON THE CENTERLINE OF STATE ROUTE 29, NORTH 67 DEGREES 15 MINUTES 00 SECONDS WEST. BASIS REFERENCES A RECORD LEGAL DESCRIPTION RECORDED IN O.R. VOLUME 126, PAGE 522
- SYMBOLS AND ABBREVIATIONS**
- 5/8"x30" REBAR SET W/ YELLOW I.D. CAP MARKED "BRH GROUP"
  - ⬢ 1" REBAR SET
  - ▲ RAILROAD SPIKE SET
  - MAG NAIL SET
  - FOUND, AS LABELED
  - △ RAILROAD SPIKE FOUND
  - ⊠ MONUMENT FOUND
  - R/W RIGHT-OF-WAY LINE
  - ⊕ CENTERLINE
  - ⊔ PROPERTY LINE
  - V.M.S. VIRGINIA MILITARY SURVEY
  - PRK. SB. PARKING SETBACK
  - BLDG. SB. BUILDING SETBACK



DETAIL: COMMON AREA EASEMENT NO. 5  
SCALE: 1"=100'

PREPARED BY:  
**BRH**  
**Group, Inc.**  
 Engineering & Surveying  
 705-F Lakeview Plaza Boulevard  
 Worthington, Ohio 43085-4779  
 Phone: (614) 841-9500  
 Fax: (614) 841-0170  
 Email: info@brhgroup.com