

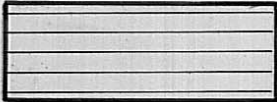
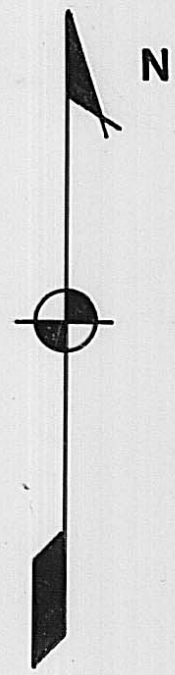


PROPOSED ACQUISITIONS (ORIGINAL)

-  Philip L. Ferguson
-  John Sawyer
-  J. Sawyer Company

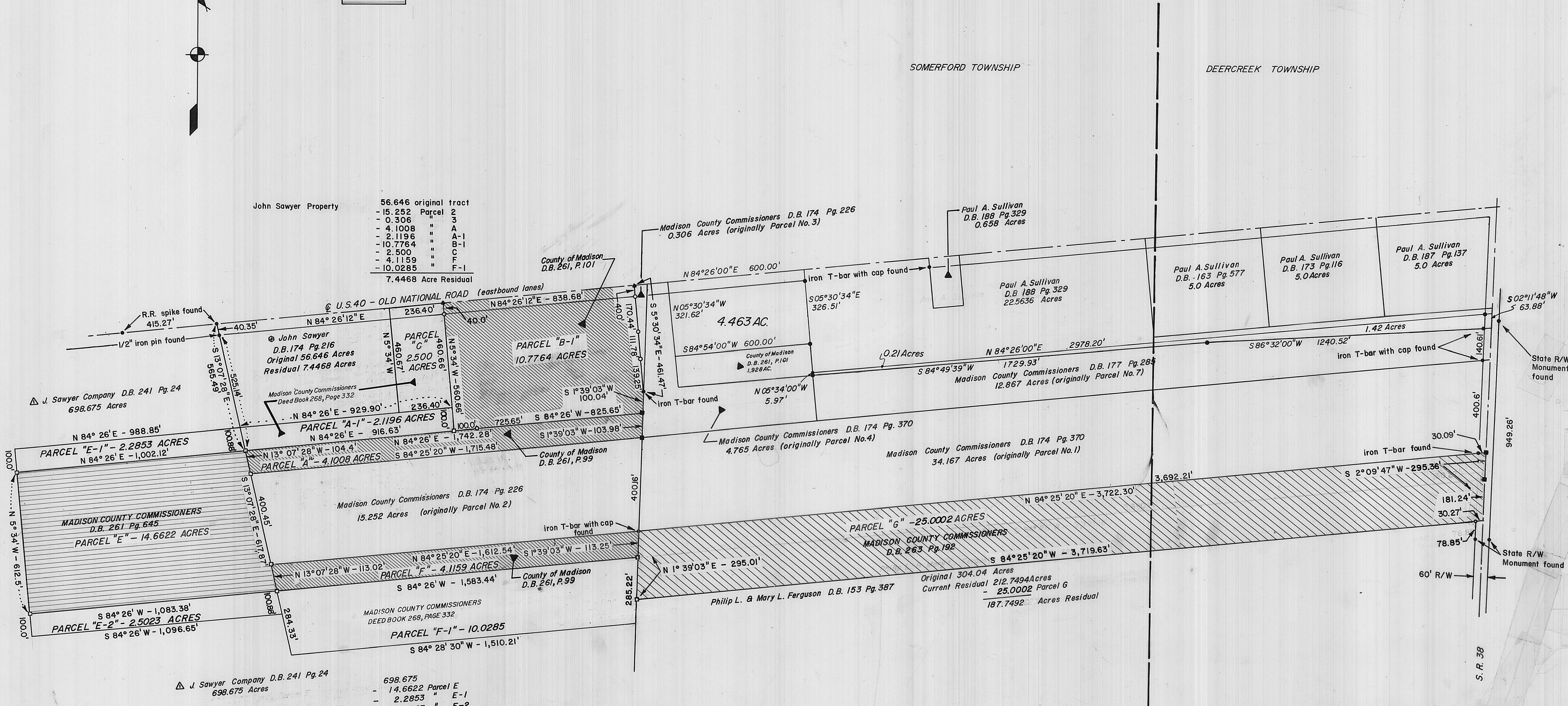


SOMERFORD TOWNSHIP

DEERCREEK TOWNSHIP

John Sawyer Property

56.646 original tract
- 15.252 Parcel 2
- 0.306 " 3
- 4.1008 " A
- 2.1196 " B-1
- 10.7764 " B-1
- 2.500 " C-1
- 4.1159 " F-1
- 10.0285 " F-1
7.4468 Acre Residual

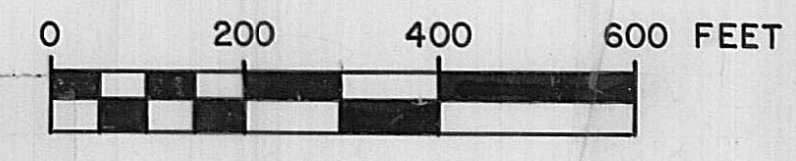


J. Sawyer Company D.B. 241 Pg. 24
698.675 Acres

698.675
- 14.6622 Parcel E
- 2.2853 " E-1
- 2.5023 " E-2
679.2252 Acres Residual

△ NOW Orleton Farms Joint Venture D.B. 264 Pg. 921

- Existing Monuments
- flush } 3/4" Iron Pipes set - 30" long with caps stamped L.S. 6495
- buried 2' }
- Railroad spikes set
- ▲ P.K. nail set



GRAPHIC SCALE

SCALE 1"=200'

Revised 21 APR. 83 PARCEL B-1
 " 6 JUN. 83 " "
 " 23 MAR. 84 " G
 " 5 FEB. 85 " A-1, E-1, E-2, F-1
 " 17 OCT. 85 " C

PROPOSED LAND ACQUISITIONS
MADISON COUNTY AIRPORT
 MADISON COUNTY, OHIO
 DEER CREEK TOWNSHIP - V.M.S. 6245 - 8374-8792-8503
 SOMERFORD TOWNSHIP - V.M.S. 6245-8352-8503

MADISON COUNTY ENGINEERS OFFICE
 222 GARFIELD AVE.
 LONDON, OHIO 43140
 SURVEYED: Jan. - Feb. 1983