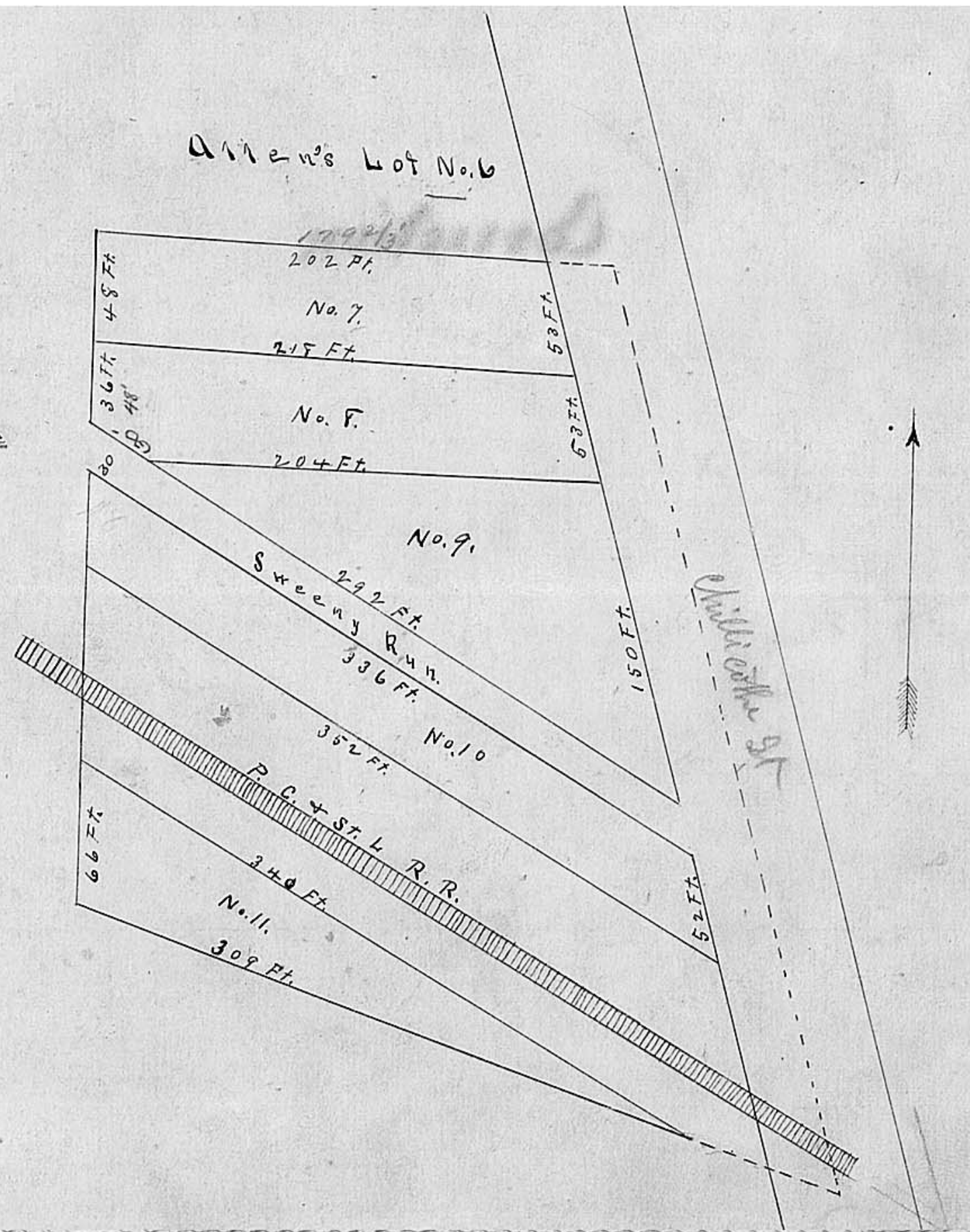


Plain City  
Charles Amenn's Addition.



Plain City

Charles Amenn's Addition

This Plat accepted and thirty feet of Chillicothe Street fronting on said Lots, dedicated to public use by ordinance No. 51 passed May 28<sup>th</sup> 1880.

Charles Amenns Addition to Plain City, is predicated at the S E corner of Lot No 6 of Marshalls Addition to Plain City Ohio. Lot No 7 is 53 ft wide on Chillicothe Street, 202 ft long on N line 48 feet wide on W line, 218 ft, long on S. line Lot No 8 is 53 ft wide on Chillicothe St. 218 ft on N line 48 ft on W line, 30 ft. to a stake on Sweeney Run, 204 ft S line. Lot No 9 is 150 ft. on Chillicothe St 204 ft on N. line 292 ft along Sweeney run. Lot No 10, 52 feet on Chillicothe Street 336 ft on N line along Sweeney run, 48 ft. wide on W line 352 ft on S line, with P. C. + St Louis R.R. Lot No 11 is 340 ft on N line, with P. C. + St L. R.R. 66 feet on W line, 309 ft S. line, from the center of Chillicothe Street to the line of above lots is 30 ft. above plat embraces all of the land sold by William Jones Sheriff of Madison County Ohio, to Charles Amann in, the case of Almira Curry and Almira Thomas vs L. S. Bigelow. Before me William Allen a Justice of the Peace, personally came Charles Amenn, the dedicator of the foregoing plat and acknowledged the signing and sealing of the same to be his voluntary act and deed for the purposes above mentioned.

Plain City O. May 17<sup>th</sup> 1880 Signed

Charles Amenn,

Wm Allen J. P.

I do hereby certify the above to be a true copy of the original as on file in the Mayors Office Plain City, Madison County Ohio, given under my hand and seal This 31<sup>st</sup> day of May 1880.

Received June 1<sup>st</sup> 1880 at 10 o'clock A.M.

Recorded June 15<sup>th</sup> 1880

L Eastman Recorder,

Original Record. Plat Book, vol. 1 Page, 101

A. K. Gray  
Corporation Clerk.