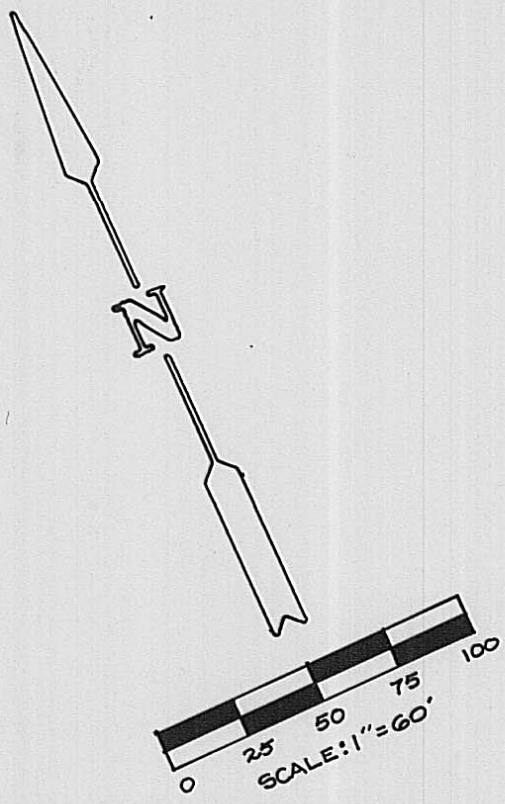
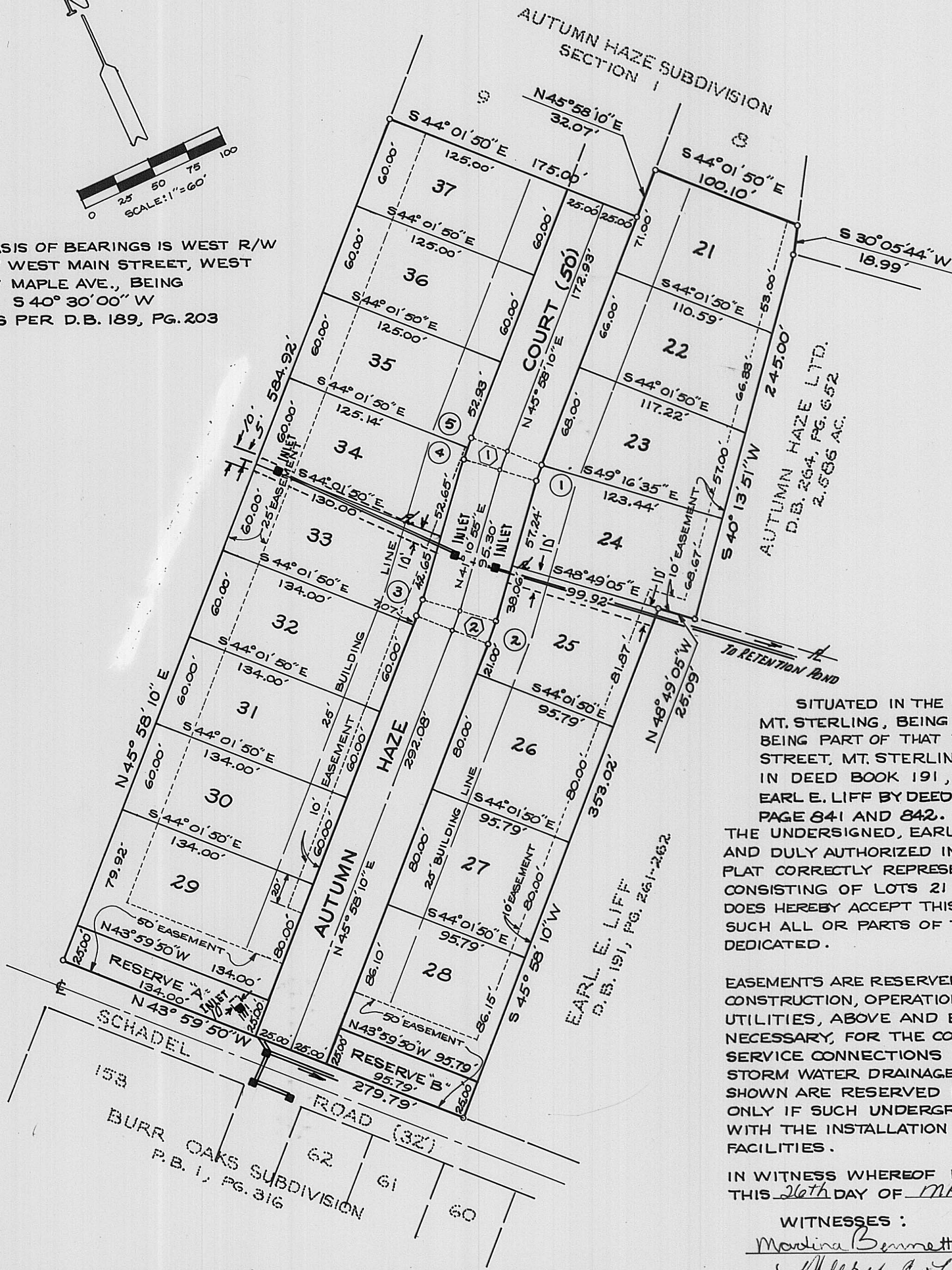


# AUTUMN HAZE SUBDIVISION

## SECTION TWO



BASIS OF BEARINGS IS WEST R/W  
OF WEST MAIN STREET, WEST  
OF MAPLE AVE., BEING  
S 40° 30' 00" W  
AS PER D.B. 189, PG. 203



SITUATED IN THE STATE OF OHIO, COUNTY OF MADISON, VILLAGE OF MT. STERLING, BEING IN V.M.S. 12140, AND CONTAINING 3.906 ACRES, BEING PART OF THAT TRACT CONVEYED TO EARL E. LIFF, 5 S. MARKET STREET, MT. STERLING, OHIO, BY DEED OF RECORD AS DESCRIBED IN DEED BOOK 191, PAGE 261-262, AND PART OF THAT TRACT CONVEYED TO EARL E. LIFF BY DEED OF RECORD AS DESCRIBED IN DEED BOOK 276, PAGE 841 AND 842.

THE UNDERSIGNED, EARL E. LIFF, OWNER OF THE LAND HEREIN DESCRIBED, AND DULY AUTHORIZED IN THE PREMISES, DOES HEREBY CERTIFY THAT THIS PLAT CORRECTLY REPRESENTS HIS AUTUMN HAZE SUBDIVISION, SECTION TWO, CONSISTING OF LOTS 21 THROUGH 37, AND RESERVES "A" AND "B", INCLUSIVE, AND DOES HEREBY ACCEPT THIS PLAT OF SAME AND DEDICATE TO PUBLIC USE AS SUCH ALL OR PARTS OF THE COURT SHOWN HEREON AND NOT HERETOFORE DEDICATED.

EASEMENTS ARE RESERVED WHERE INDICATED ON THE PLAT FOR THE CONSTRUCTION, OPERATION AND MAINTENANCE OF ALL PUBLIC AND PRIVATE UTILITIES, ABOVE AND BENEATH THE SURFACE OF THE GROUND, AND WHERE NECESSARY, FOR THE CONSTRUCTION, OPERATION, AND MAINTENANCE OF SERVICE CONNECTIONS TO ALL ADJACENT LOTS AND LANDS, AND FOR STORM WATER DRAINAGE, SURFACE AND UNDERGROUND. THE EASEMENTS SHOWN ARE RESERVED FOR UNDERGROUND CABLE TELEVISION FACILITIES, ONLY IF SUCH UNDERGROUND FACILITIES ARE INSTALLED CONCURRENTLY WITH THE INSTALLATION OF ELECTRIC AND TELEPHONE COMPANIES' FACILITIES.

IN WITNESS WHEREOF EARL E. LIFF HAS HEREUNTO SET HIS HAND THIS 26th DAY OF MAY, 1989.

WITNESSES:

*Mary C. LeBeau*  
*Mary C. LeBeau*

OWNER  
*Earl E. Liff*  
EARL E. LIFF

STATE OF OHIO, S.S.  
COUNTY OF MADISON

BEFORE ME, A NOTARY PUBLIC IN AND FOR SAID COUNTY, PERSONALLY CAME EARL E. LIFF, WHO ACKNOWLEDGES THE SIGNING OF THE FOREGOING INSTRUMENT TO BE HIS FREE AND VOLUNTARY ACT AND DEED FOR THE USES AND PURPOSES THEREIN EXPRESSED. IN WITNESS WHEREOF I HAVE HEREUNTO SET MY HAND AND AFFIXED MY OFFICIAL SEAL THIS 26th DAY OF MAY, 1989.

*Mary C. LeBeau*

MARY C. LeBEAU  
NOTARY PUBLIC, STATE OF OHIO  
MY COMMISSION EXPIRES SEPT. 6, 1993



WOLFE ENGINEERING  
4846 FRESHWATER ROAD  
DELAWARE, OHIO 43015

BY: *Charles R. Wolfe*  
REGISTERED SURVEYOR NO. 6186

913274

APPROVED 6/26/89 *Joyce L. Weir, Mayor*  
DATE  
APPROVED 6/26/89 *Gene & Ruth - P.O.S.*  
DATE  
APPROVED 6/26/89 *Virginia B. Lehman/Club*  
DATE  
MADISON COUNTY AUDITOR *Raymond M. Weisner*  
TRANSFERRED THIS 18 DAY OF Sept, 1989.  
MADISON COUNTY RECORDER *Margaret S. Ruff*  
RECORDED THIS 18 DAY OF September, 1989.  
PLAT BOOK \_\_\_\_\_ PAGE NO. Slide 614  
By: *Donna Wilkerson* - Deputy June: 12:35 P.m.  
APPROVED 6/26/89 *Joseph W. Cantor, Chairman*  
DATE PLANNING COMMISSION  
Fee - 19.55  
Resolution No. 1989-7

### ROAD CURVE DATA

NO.	Δ	R	T	L	CH	CH. BEARING
①	4° 47' 15"	150'	6.27'	12.53'	12.53'	N43° 34' 32" E
②	4° 47' 15"	150'	6.27'	12.53'	12.53'	N43° 34' 32" E

### LOT DIMENSIONS

NO.	Δ	R	T	L	CH	CH. BEARING
①	4° 47' 15"	125'	5.23'	10.44'	10.44'	N43° 34' 32" E
②	4° 47' 15"	175'	7.32'	14.62'	14.62'	N43° 34' 32" E
③	4° 47' 15"	125'	5.23'	10.44'	10.44'	N43° 34' 32" E
④	2° 28' 24"	175'	3.78'	7.55'	7.55'	N42° 25' 07" E
⑤	2° 18' 51"	175'	3.53'	7.07'	7.07'	N44° 48' 45" E

I DO HEREBY CERTIFY THAT I HAVE SURVEYED THE ABOVE PREMISES, PREPARED THIS PLAT, AND CERTIFY THAT THIS PLAT IS CORRECT. ALL DIMENSIONS ARE SHOWN IN FEET AND DECIMAL PARTS THEREOF. DIMENSIONS SHOWN ALONG CURVES ARE CHORD MEASUREMENTS. IRON PINS ARE INDICATED BY THE SYMBOL PERMANENT MONUMENTS (1" SOLID IRON PIN) TO BE PLACED UPON COMPLETION OF CONSTRUCTION ARE INDICATED BY THE SYMBOL .