

# DEDICATION OF COMMERCE PARKWAY & WALKER WAY PHASE I



GRAPHIC SCALE



( IN FEET )  
1 inch = 100 ft.

## LEGEND

- IRON PIN SET (1" O.D. IRON PIPE, 30" LONG W/PLASTIC CAP "M-E COMPANIES/S-6872")
- RAILROAD SPIKE SET
- ⊙ IRON PIN FOUND
- RR SPIKE FOUND
- ⊠ MONUMENT FOUND - HIGHWAY MONUMENT UNLESS OTHERWISE NOTED
- EASEMENT
- PAVING SETBACK
- BUILDING SETBACK

MTB CORP.  
O.R. 282, PG. 938  
461.5579 ACRES (ORIG.)  
460.588 ACRES SURVEY

GEORGE M. &  
SHIRLEE J. WHITSON  
D.V. 176, PG. 287  
17.717 ACRES (ORIG.)  
(45/100 INT.)

ROUTE 29, INC.  
O.R. 111, PG. 827  
4.453 ACRES  
4.416 ACRES SURVEY

WEBB PROPERTY COMPANY  
O.R. 72, PG. 759  
21.3954 ACRES  
(3/8 INT.)

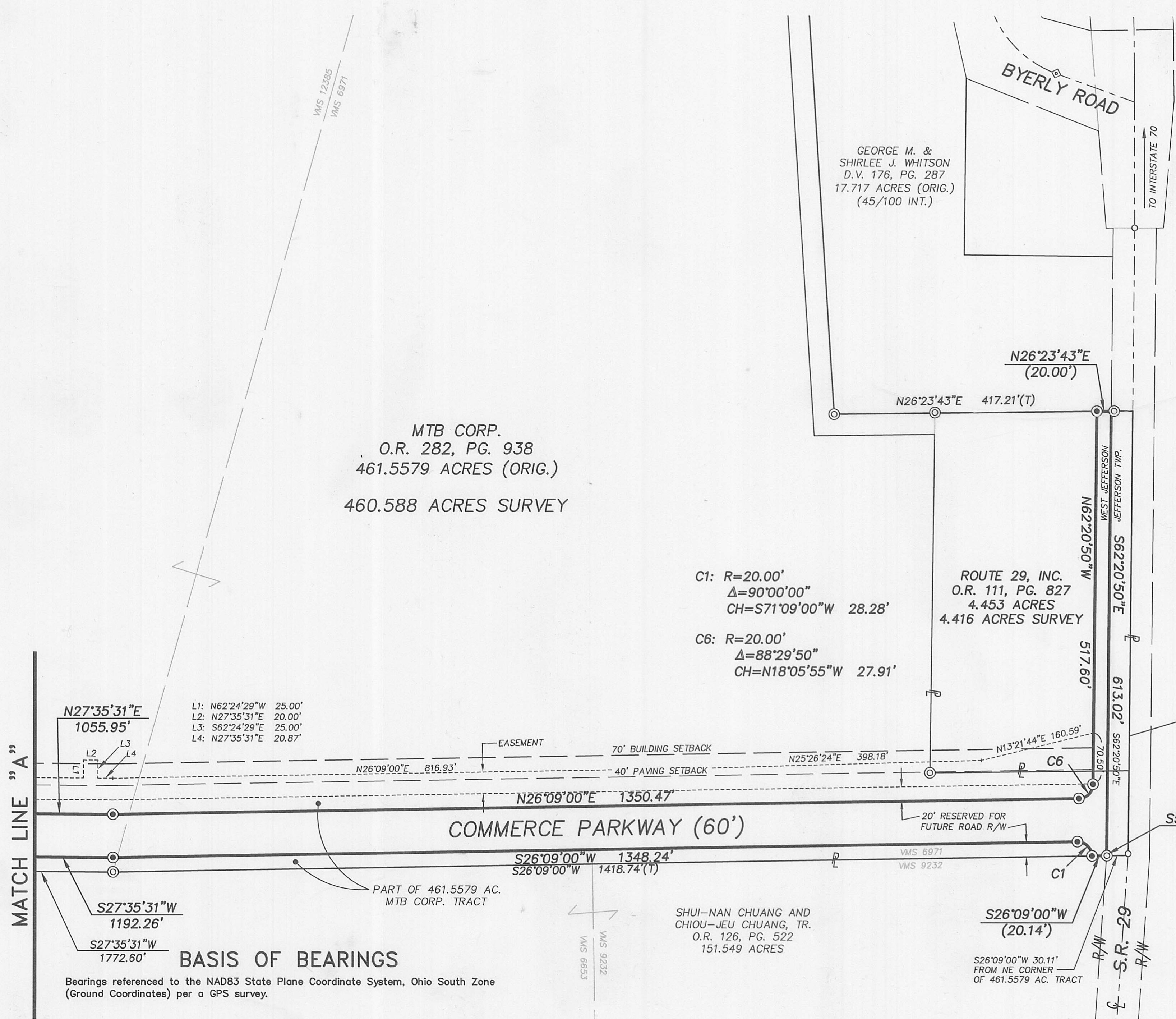
OWNER-DEVELOPER  
MTB CORP./ROUTE 29, INC.  
3755 W. DUBLIN-GRANVILLE RD.,  
DUBLIN, OHIO  
CONTACT: JIM SCHMIDT (614) 793-2233

PREPARED BY:



Civil Engineering Group  
635 Brookside Boulevard  
Westerville, OH 43081  
Contact: Thom Ries  
614-818-4900 Ext. 233  
Fax 818-4902

200300002258  
Filed for Record in  
MADISON COUNTY, OHIO  
CHARLES E REED  
03-11-2003 02:37 PM,  
PLAT  
21.80



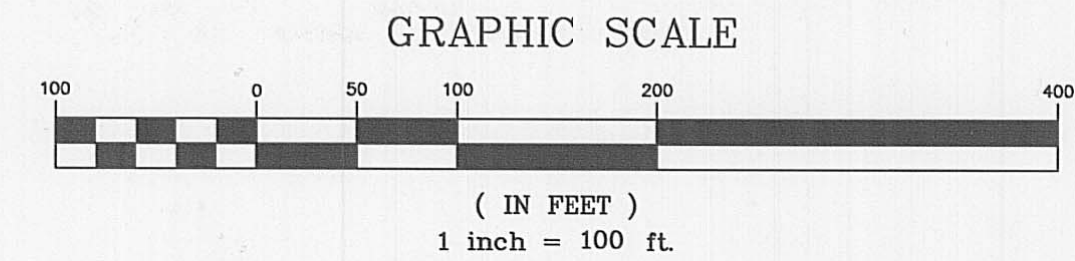
- L1: N62°24'29"W 25.00'  
L2: N27°35'31"E 20.00'  
L3: S62°24'29"E 25.00'  
L4: N27°35'31"E 20.87'

**BASIS OF BEARINGS**  
Bearings referenced to the NAD83 State Plane Coordinate System, Ohio South Zone (Ground Coordinates) per a GPS survey.

MATCH LINE "A"

J:\Land Projects\01-577\dwg\01577\_FP.dwg by:romano on 10/24/2002 @ 06:28:38 am ~ for M-E Companies, Inc.

# DEDICATION OF COMMERCE PARKWAY & WALKER WAY PHASE I



## LEGEND

- ⊙ IRON PIN SET (1" O.D. IRON PIPE, 30" LONG W/PLASTIC CAP "M-E COMPANIES/S-6872")
- RAILROAD SPIKE SET
- ⊙ IRON PIN FOUND
- RR SPIKE FOUND
- ⊠ MONUMENT FOUND - HIGHWAY MONUMENT UNLESS OTHERWISE NOTED
- EASEMENT
- PAVING SETBACK
- BUILDING SETBACK

TARGET CORPORATION  
O.R. 147, PG. 1480  
148.728 ACRES

MTB CORP.  
O.R. 282, PG. 938  
461.5579 ACRES (ORIG.)  
460.588 ACRES SURVEY

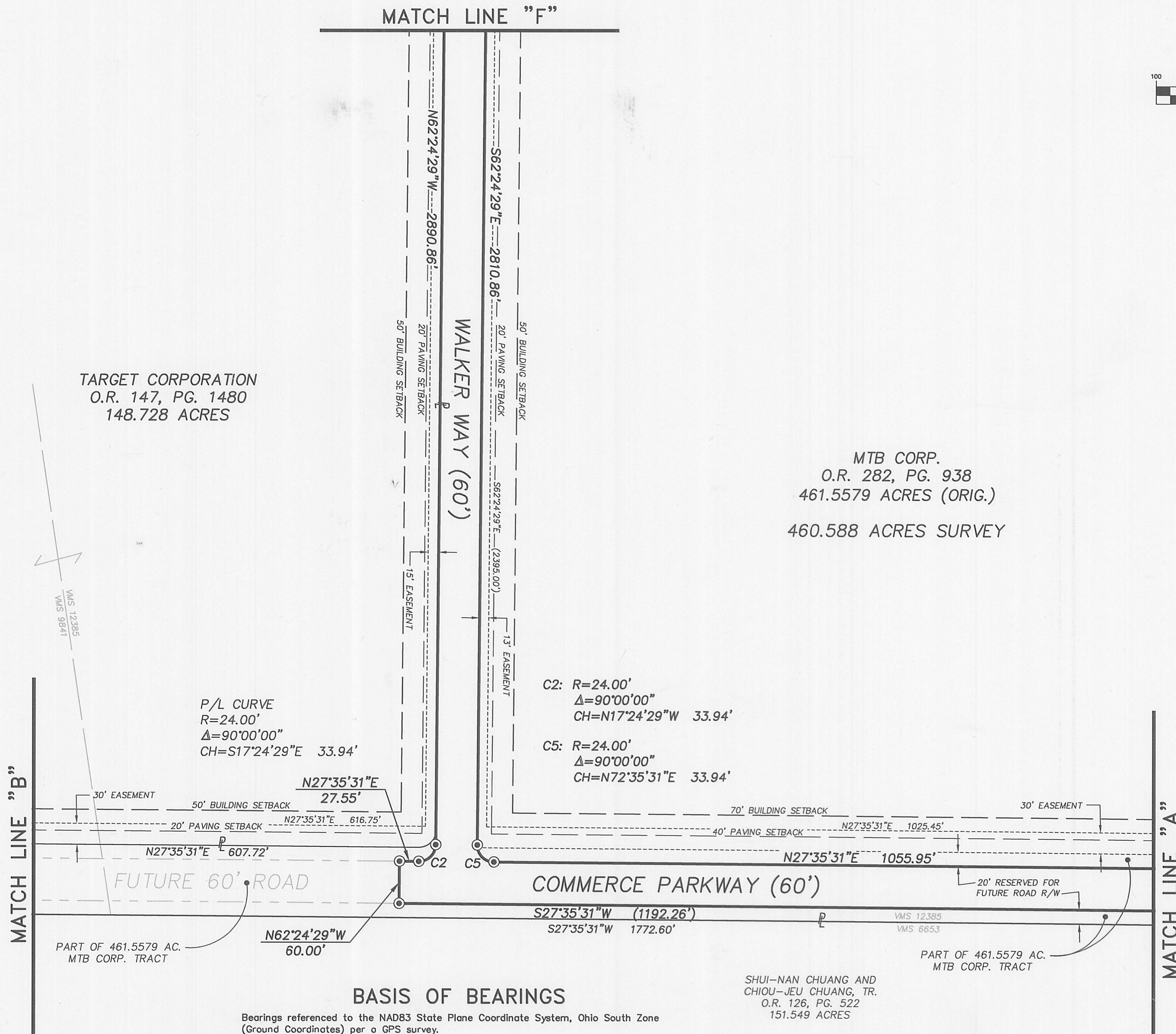
OWNER-DEVELOPER  
MTB CORP./ROUTE 29, INC.  
3755 W. DUBLIN-GRANVILLE RD.,  
DUBLIN, OHIO  
CONTACT: JIM SCHMIDT (614) 793-2233

PREPARED BY:



Civil Engineering Group  
635 Brookside Boulevard  
Westerville, OH 43081  
Contact: Thom Ries  
614-818-4900 Ext. 233  
Fax 818-4902

200300002259  
Filed for Record in  
MADISON COUNTY, OHIO  
CHARLES E REED  
03-11-2003 02:37 PM.  
PLAT 21.80

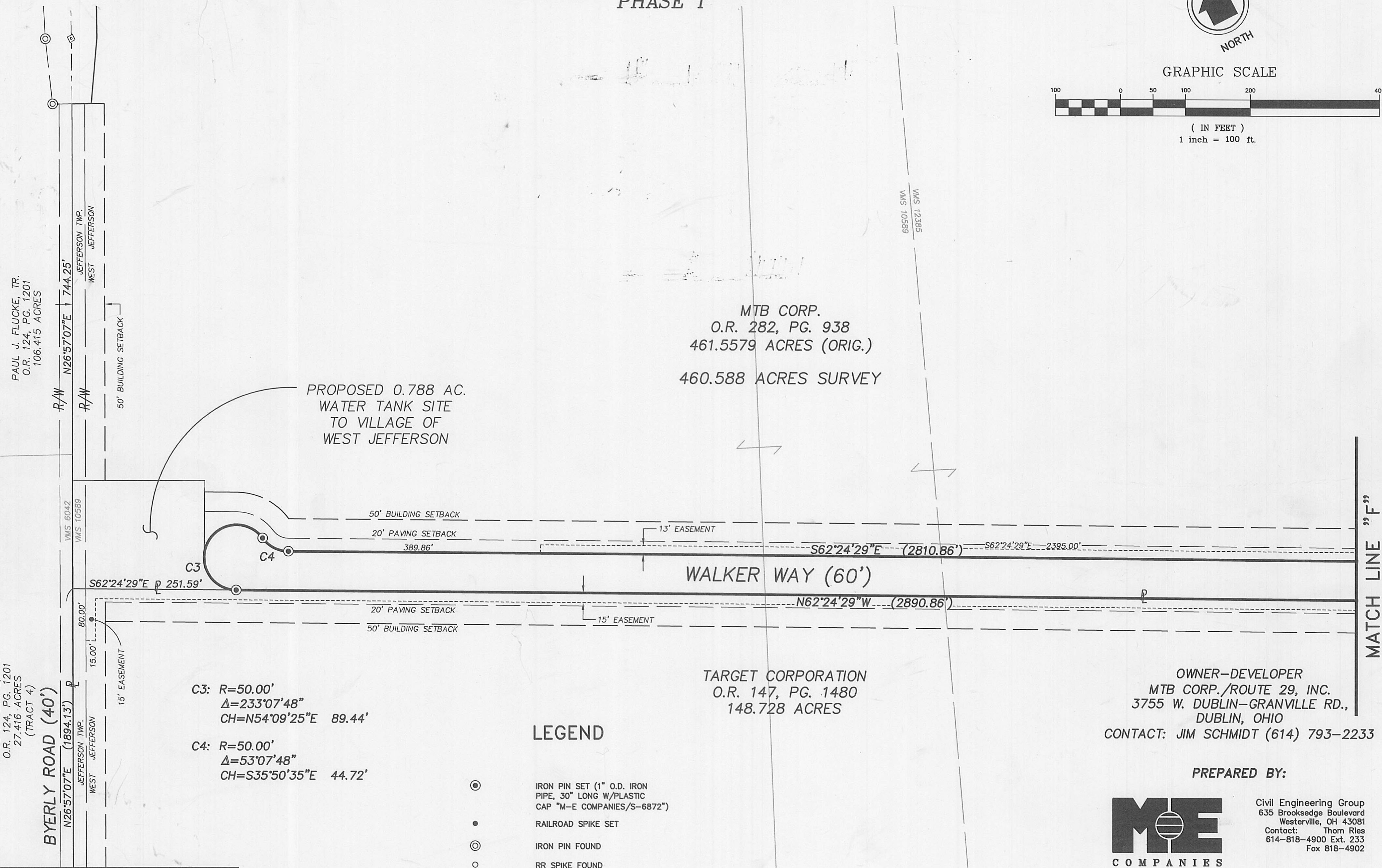
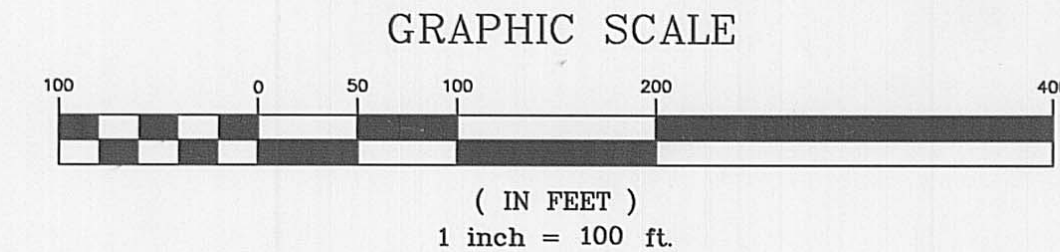


### BASIS OF BEARINGS

Bearings referenced to the NAD83 State Plane Coordinate System, Ohio South Zone  
(Ground Coordinates) per a GPS survey.

SHUI-NAN CHUANG AND  
CHIOU-JEU CHUANG, TR.  
O.R. 126, PG. 522  
151.549 ACRES

# DEDICATION OF COMMERCE PARKWAY & WALKER WAY PHASE I



PREPARED BY:



Civil Engineering Group  
635 Brooksedge Boulevard  
Westerville, OH 43081  
Contact: Thom Ries  
614-818-4900 Ext. 233  
Fax 818-4902

200300002263  
Filed for Record in  
MADISON COUNTY, OHIO  
CHARLES E REED  
03-11-2003 02:37 PM.  
PLAT 21.80

*B-255*

j:\Land Projects\01-577\dwg\01577\_FP.dwg by:rlomano on 11/12/2002 @ 06:32:44 am ~ for M-E Companies, Inc.