

Curve Data of Dorvic Drive

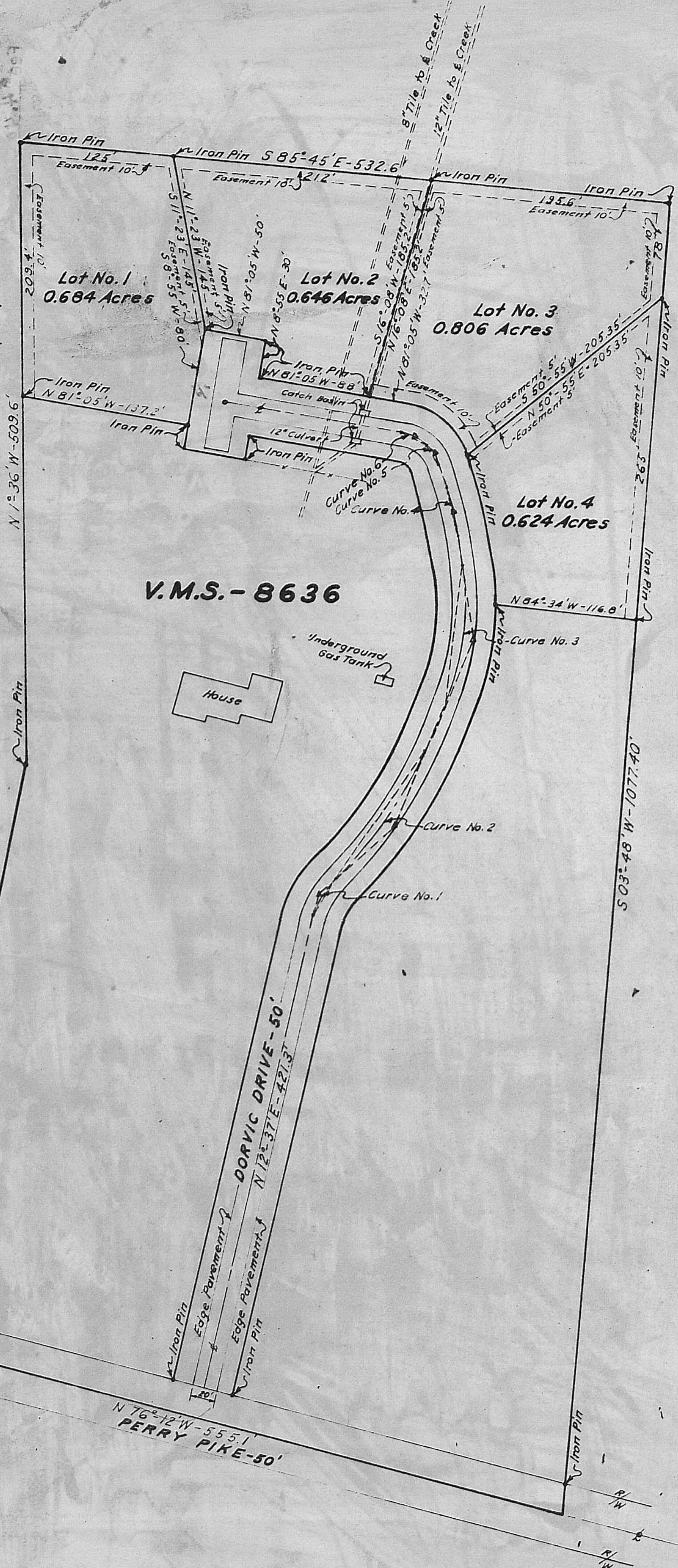
- Chords**
 No. 1 N 29° 55' E - 34.40'
 No. 2 N 34° 55' E - 127.88'
 No. 3 N 06° 24' E - 115.34'
 No. 4 N 13° 35' W - 39.92'
 No. 5 N 34° 19' W - 18.56'
 No. 6 N 66° 12' W - 21.52'

- ℄ Perry Pike to P.I. of Curve No. 1 = 439.3'
 Δ = 34° 35' Rt = 83.45' to P.I. of Curve No. 2
 Δ = 24° 33' Lt = 166.20' to P.I. of Curve No. 3
 Δ = 32° 29' Lt = 107.10' to P.I. of Curve No. 4
 Δ = 07° 29' Lt = 50.00' to P.I. of Curve No. 5
 Δ = 34° 01' Lt = 21.40' to P.I. of Curve No. 6
 Δ = 29° 45' Lt = 156.70' to ℄ of Intersection.

Tangents & Bearings Between Curves

- P.T. of Curve No. 1 to P.C. of Curve No. 2
 = No Tangent (Point of Reverse Curve)
 P.T. of Curve No. 2 to P.C. of Curve No. 3
 = N 22° 39' E - 40.75'
 P.T. of Curve No. 3 to P.C. of Curve No. 4
 = N 09° 50' W - 27.10'
 P.T. of Curve No. 4 to P.C. of Curve No. 5
 = N 17° 19' W - 20.00'
 P.T. of Curve No. 5 to P.C. of Curve No. 6
 = N 51° 20' W - 0.15'
 P.T. of Curve No. 6 to ℄ of Intersection.

Scale: 1" = 60'



Drainage Easement
 See OR VOL. 12 pg. 31

Plat showing Subdivision of Victor E. & Dorcas M. Humm in Darby Township, Madison County, Ohio, surveyed in 1966

Scale
 0' 60' 120' 180'
 Scale: 1" = 60'

I hereby certify the above plat is a correct survey and that no encroachments exist.

S.C. Roush
 Registered Engineer No. 5274