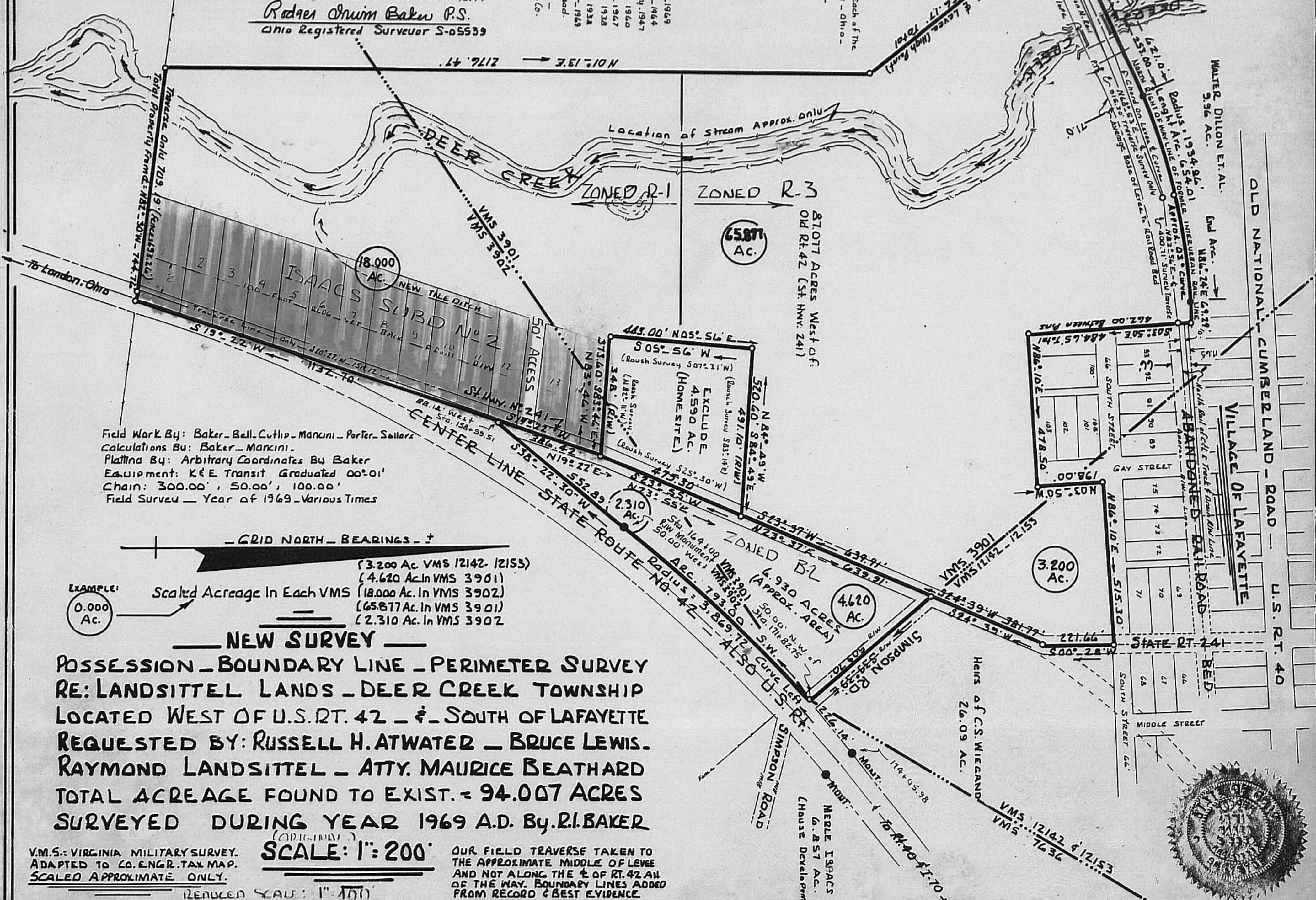


Note: This Plat Has Been Prepared In Part By Best Evidence - In Part By Each of The Deed Descriptions Used - And As Per A Perimeter Field Traverse Made By Us This Year. Our Traverse Was Computed By Lat. & Dept. - Areas Figured By Double Meridian Distances. We Selected The North Base Of Rail Way Levee As The Northern Boundary To This Survey - The Area Figured By Planimeter - And The Area 6,930 Ac. Also By Planimeter. Based On All Available Data - I Believe We Are Within The Necessary Accuracy As Needed For Land Transfer.

Rodney Orwin Baker P.S.
Ohio Registered Surveyor S-05539

Reference Has Been Made To Each of The Following - Madison County - Ohio -
Deed Vol. Page
125 345
125 359
125 383
125 406
125 429
125 452
125 475
125 498
125 521
125 544
125 567
125 590
125 613
125 636
125 659
125 682
125 705
125 728
125 751
125 774
125 797
125 820
125 843
125 866
125 889
125 912
125 935
125 958
125 981
125 1004
125 1027
125 1050
125 1073
125 1096
125 1119
125 1142
125 1165
125 1188
125 1211
125 1234
125 1257
125 1280
125 1303
125 1326
125 1349
125 1372
125 1395
125 1418
125 1441
125 1464
125 1487
125 1510
125 1533
125 1556
125 1579
125 1602
125 1625
125 1648
125 1671
125 1694
125 1717
125 1740
125 1763
125 1786
125 1809
125 1832
125 1855
125 1878
125 1901
125 1924
125 1947
125 1970
125 1993
125 2016
125 2039
125 2062
125 2085
125 2108
125 2131
125 2154
125 2177
125 2200
125 2223
125 2246
125 2269
125 2292
125 2315
125 2338
125 2361
125 2384
125 2407
125 2430
125 2453
125 2476
125 2499
125 2522
125 2545
125 2568
125 2591
125 2614
125 2637
125 2660
125 2683
125 2706
125 2729
125 2752
125 2775
125 2798
125 2821
125 2844
125 2867
125 2890
125 2913
125 2936
125 2959
125 2982
125 3005
125 3028
125 3051
125 3074
125 3097
125 3120
125 3143
125 3166
125 3189
125 3212
125 3235
125 3258
125 3281
125 3304
125 3327
125 3350
125 3373
125 3396
125 3419
125 3442
125 3465
125 3488
125 3511
125 3534
125 3557
125 3580
125 3603
125 3626
125 3649
125 3672
125 3695
125 3718
125 3741
125 3764
125 3787
125 3810
125 3833
125 3856
125 3879
125 3902
125 3925
125 3948
125 3971
125 3994
125 4017
125 4040
125 4063
125 4086
125 4109
125 4132
125 4155
125 4178
125 4201
125 4224
125 4247
125 4270
125 4293
125 4316
125 4339
125 4362
125 4385
125 4408
125 4431
125 4454
125 4477
125 4500
125 4523
125 4546
125 4569
125 4592
125 4615
125 4638
125 4661
125 4684
125 4707
125 4730
125 4753
125 4776
125 4799
125 4822
125 4845
125 4868
125 4891
125 4914
125 4937
125 4960
125 4983
125 5006
125 5029
125 5052
125 5075
125 5098
125 5121
125 5144
125 5167
125 5190
125 5213
125 5236
125 5259
125 5282
125 5305
125 5328
125 5351
125 5374
125 5397
125 5420
125 5443
125 5466
125 5489
125 5512
125 5535
125 5558
125 5581
125 5604
125 5627
125 5650
125 5673
125 5696
125 5719
125 5742
125 5765
125 5788
125 5811
125 5834
125 5857
125 5880
125 5903
125 5926
125 5949
125 5972
125 5995
125 6018
125 6041
125 6064
125 6087
125 6110
125 6133
125 6156
125 6179
125 6202
125 6225
125 6248
125 6271
125 6294
125 6317
125 6340
125 6363
125 6386
125 6409
125 6432
125 6455
125 6478
125 6501
125 6524
125 6547
125 6570
125 6593
125 6616
125 6639
125 6662
125 6685
125 6708
125 6731
125 6754
125 6777
125 6800
125 6823
125 6846
125 6869
125 6892
125 6915
125 6938
125 6961
125 6984
125 7007
125 7030
125 7053
125 7076
125 7099
125 7122
125 7145
125 7168
125 7191
125 7214
125 7237
125 7260
125 7283
125 7306
125 7329
125 7352
125 7375
125 7398
125 7421
125 7444
125 7467
125 7490
125 7513
125 7536
125 7559
125 7582
125 7605
125 7628
125 7651
125 7674
125 7697
125 7720
125 7743
125 7766
125 7789
125 7812
125 7835
125 7858
125 7881
125 7904
125 7927
125 7950
125 7973
125 7996
125 8019
125 8042
125 8065
125 8088
125 8111
125 8134
125 8157
125 8180
125 8203
125 8226
125 8249
125 8272
125 8295
125 8318
125 8341
125 8364
125 8387
125 8410
125 8433
125 8456
125 8479
125 8502
125 8525
125 8548
125 8571
125 8594
125 8617
125 8640
125 8663
125 8686
125 8709
125 8732
125 8755
125 8778
125 8801
125 8824
125 8847
125 8870
125 8893
125 8916
125 8939
125 8962
125 8985
125 9008
125 9031
125 9054
125 9077
125 9100
125 9123
125 9146
125 9169
125 9192
125 9215
125 9238
125 9261
125 9284
125 9307
125 9330
125 9353
125 9376
125 9399
125 9422
125 9445
125 9468
125 9491
125 9514
125 9537
125 9560
125 9583
125 9606
125 9629
125 9652
125 9675
125 9698
125 9721
125 9744
125 9767
125 9790
125 9813
125 9836
125 9859
125 9882
125 9905
125 9928
125 9951
125 9974
125 9997
125 10000



Field Work By: Baker - Bell - Cutlip - Mancini - Porter - Sellers
Calculations By: Baker - Mancini
Platting By: Arbitrary Coordinates By Baker
Equipment: K&E Transit Graduated 00' 01"
Chain: 300.00', 50.00', 100.00'
Field Survey - Year of 1969 - Various Times

GRID NORTH - BEARINGS -

EXAMPLE: Scaled Acreage In Each VMS
0.000 Ac.
(3,200 Ac. in VMS 12142-12153)
(4,620 Ac. in VMS 3901)
(18,000 Ac. in VMS 3902)
(65,877 Ac. in VMS 3901)
(2,310 Ac. in VMS 3902)

NEW SURVEY

POSSESSION - BOUNDARY LINE - PERIMETER SURVEY
RE: LANDSITTEL LANDS - DEER CREEK TOWNSHIP
LOCATED WEST OF U.S. RT. 42 - & - SOUTH OF LAFAYETTE
REQUESTED BY: RUSSELL H. ATWATER - BRUCE LEWIS.
RAYMOND LANDSITTEL - ATTY. MAURICE BEATHARD
TOTAL ACREAGE FOUND TO EXIST. = 94.007 ACRES
SURVEYED DURING YEAR 1969 A.D. By R.I. BAKER

V.M.S.: VIRGINIA MILITARY SURVEY.
ADAPTED TO CO. ENGR. TAX MAP.
SCALED APPROXIMATE ONLY.

SCALE: 1" = 200'

OUR FIELD TRAVERSE TAKEN TO THE APPROXIMATE MIDDLE OF LEVEE AND NOT ALONG THE E OF RT. 42 AN OF THE WAY. BOUNDARY LINES ADDED FROM RECORD & BEST EVIDENCE.

REDUCED SCALE: 1" = 100'

