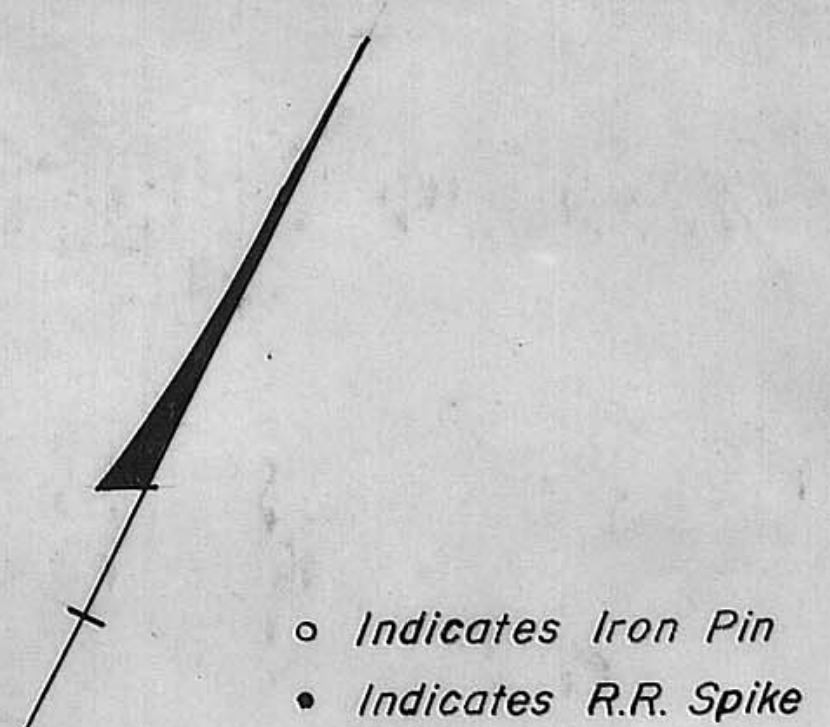


# DEER RUN FARMS



SHEET 2 OF 3

Curve Data					
No.	$\Delta$	R	T	L.C.	Arc
①	15°31'34"	1,210.33'	165.00'	326.97'	327.98'
② & ③	17°18'53"	774.99'	118.00'	233.31'	234.20'
④ & ⑤	35°39'33"	100.00'	32.16'	61.24'	62.24'
⑥	251°19'06"	60.00'			



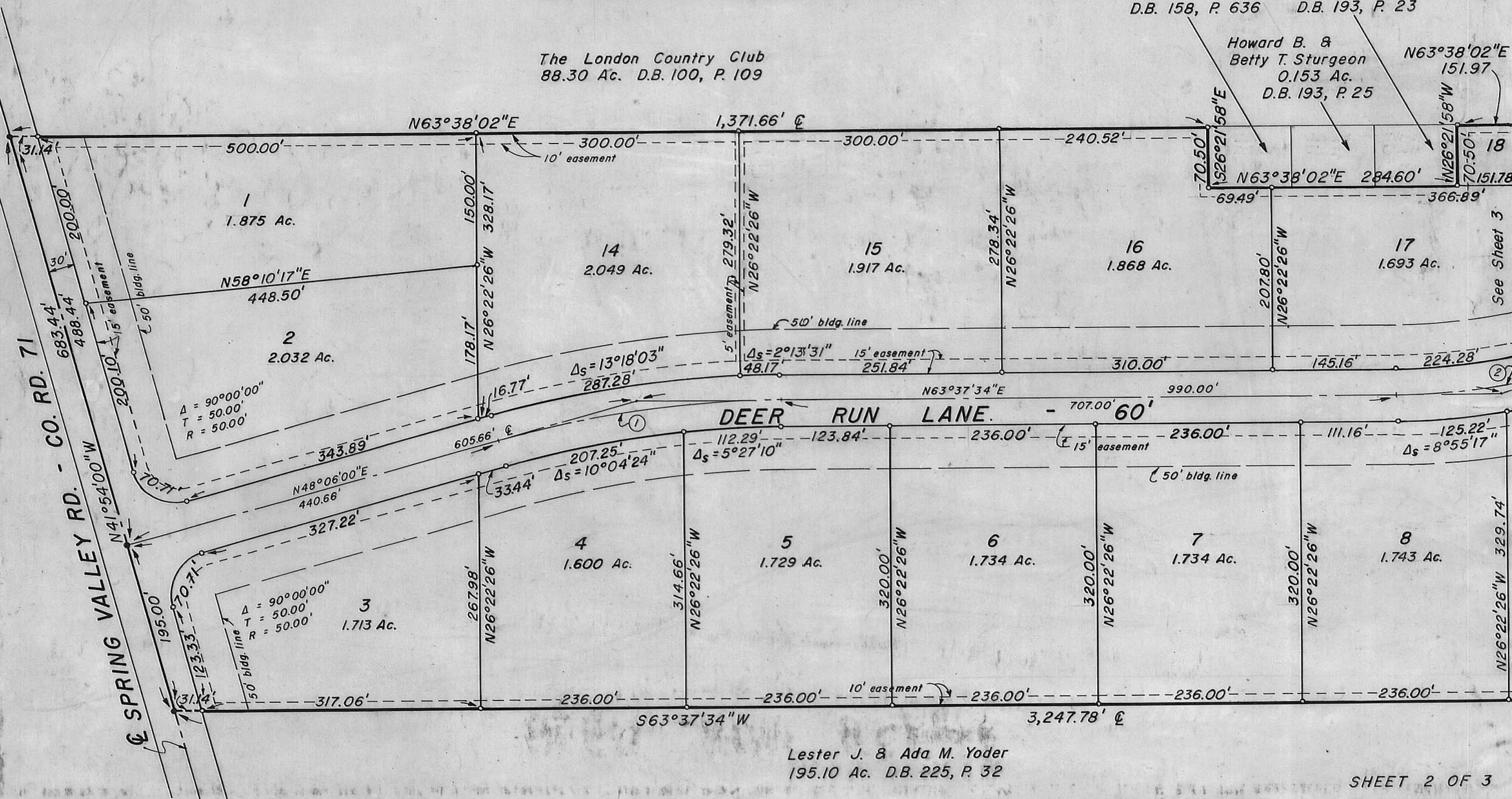
Earl W. & Aimee C. Robinson  
0.153 Ac.  
D.B. 158, P. 636

Murray & Mildred R. Creath  
0.153 Ac.  
D.B. 193, P. 23

The London Country Club  
88.30 Ac. D.B. 100, P. 109

Howard B. & Betty T. Sturgeon  
0.153 Ac.  
D.B. 193, P. 25

N63°38'02"E  
151.97'



See Sheet 3

Lester J. & Ada M. Yoder  
195.10 Ac. D.B. 225, P. 32



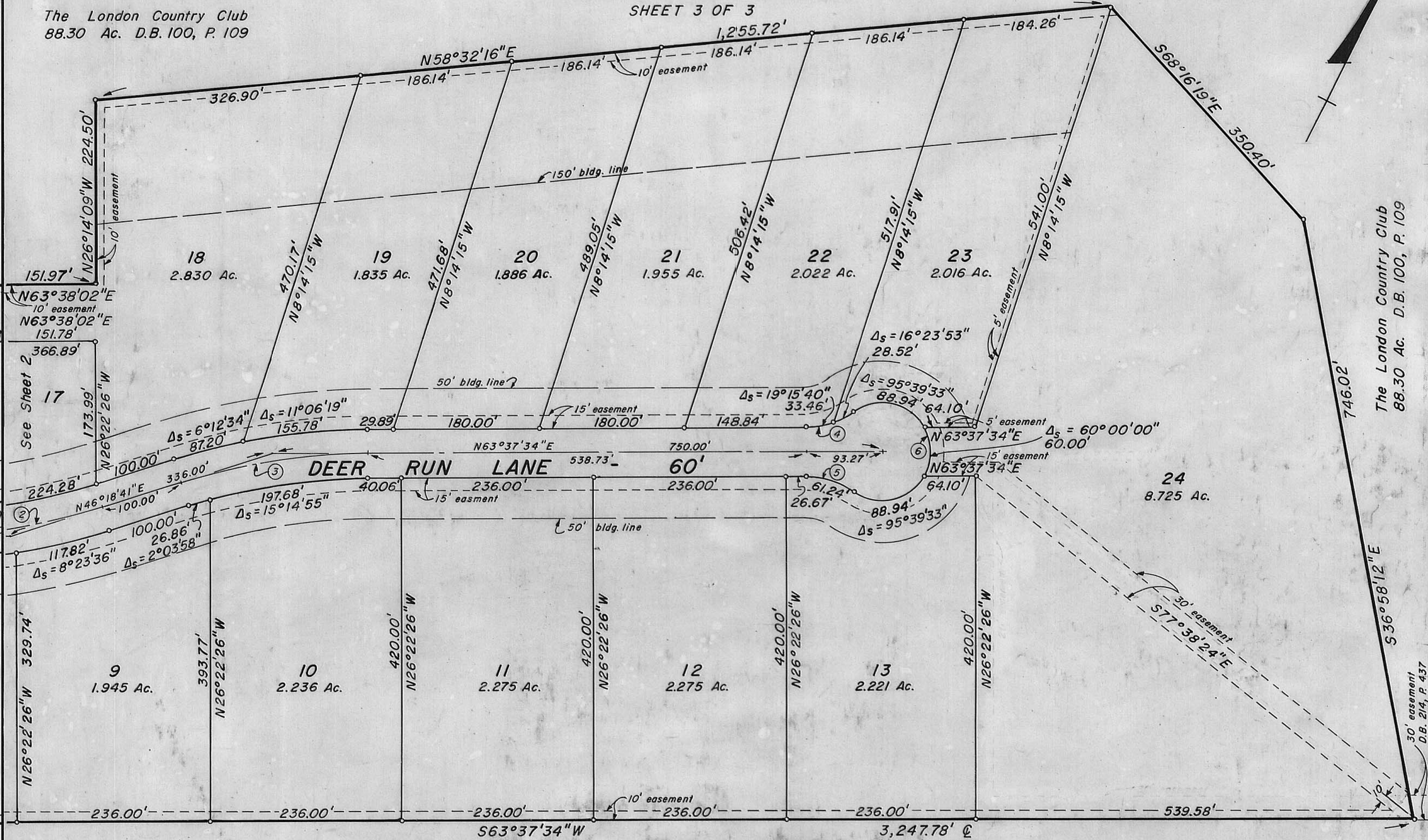
# DEER RUN FARMS

0 100 200 300

SHEET 3 OF 3

The London Country Club  
88.30 Ac. D.B. 100, P. 109

# Note #  
For Connections Concerning Plat # 24 See OR. Vol 3 Pg 1240



For Curve Data, See Sheet 2

Lester J. & Ada M. Yoder  
195.10 Ac. D.B. 225, P. 32

SHEET 3 OF 3