

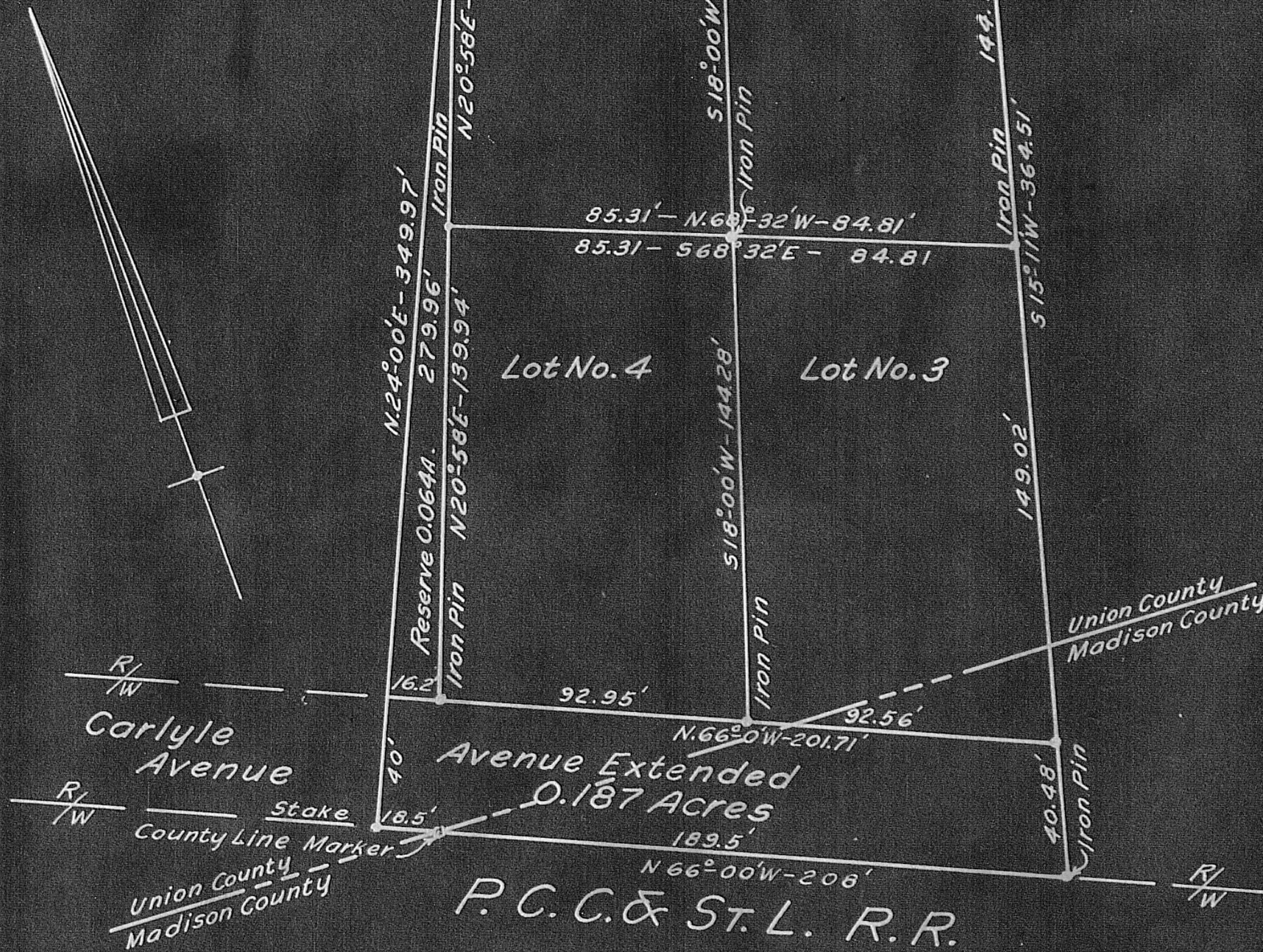
West Main

570°15'E-150.98

Street-0.107 Acres

Street

V.M.S. 7758-7830



Recapitulation

Reserve	0.064 Acres
West Main Street	0.107 "
Carlyle Avenue	0.187 "
Lot No. 1	0.269 "
Lot No. 2	0.266 "
Lot No. 3	0.292 "
Lot No. 4	0.287 "
Total	1.472 "

Union County

Reserve	0.064 Acres
West Main Street	0.107 "
Carlyle Avenue	0.071 "
Lot No. 1	0.269 "
Lot No. 2	0.266 "
Lot No. 3	0.265 "
Lot No. 4	0.287 "
Total	1.329 "

Madison County

Carlyle Avenue	0.116 Acres
Lot No. 3	0.027 "
Total	0.143 "

Dedicated to Public Use  
 West Main Street 0.107 Acres  
 Carlyle Avenue 0.187 "

Approved this 6 day of May, 1957  
*Klarna C. Johnson*  
 Mayor, Village of Plain City, Ohio

Approved and accepted this 6 day of May 1957  
 by the Council of the Village of Plain City, Ohio  
 by Resolution No. \_\_\_\_\_  
*H. Walker*  
 Village Clerk

Transferred this \_\_\_\_\_ day of \_\_\_\_\_ 1957.

Auditor, Union County, Ohio

Recorded this \_\_\_\_\_ day of \_\_\_\_\_ 1957  
 in Plat Book \_\_\_\_\_ Page \_\_\_\_\_

Recorder, Union County, Ohio

Transferred this 22 day of May 1957

*Frederick R. Hanson*  
 Auditor, Madison County, Ohio 40699

Received - May 22, 1957 at 9:50 P.M.  
 Recorded this 23 day of May 1957  
 in Plat Book \_\_\_\_\_ Page \_\_\_\_\_

*Marion K. Jones*  
 Recorder, Madison County, Ohio

Elsom Subdivision to the  
 Village of Plain City,  
 Union & Madison Counties, Ohio  
 1957

I certify the above Plat & Survey  
 to be correct.

*Helga H. Pedersen*  
 Registered Engineer No. 5851.

Scale 1" = 40'

Elsom Subdivision - Village of Plain City  
 Plat: 83.50 - 92.40 99 - 99.40 99 - 99.40  
 Received: May 22, 1957 at 8:50 P.M. - Recorded: May 23, 1957  
 Original plat on back of page #10.