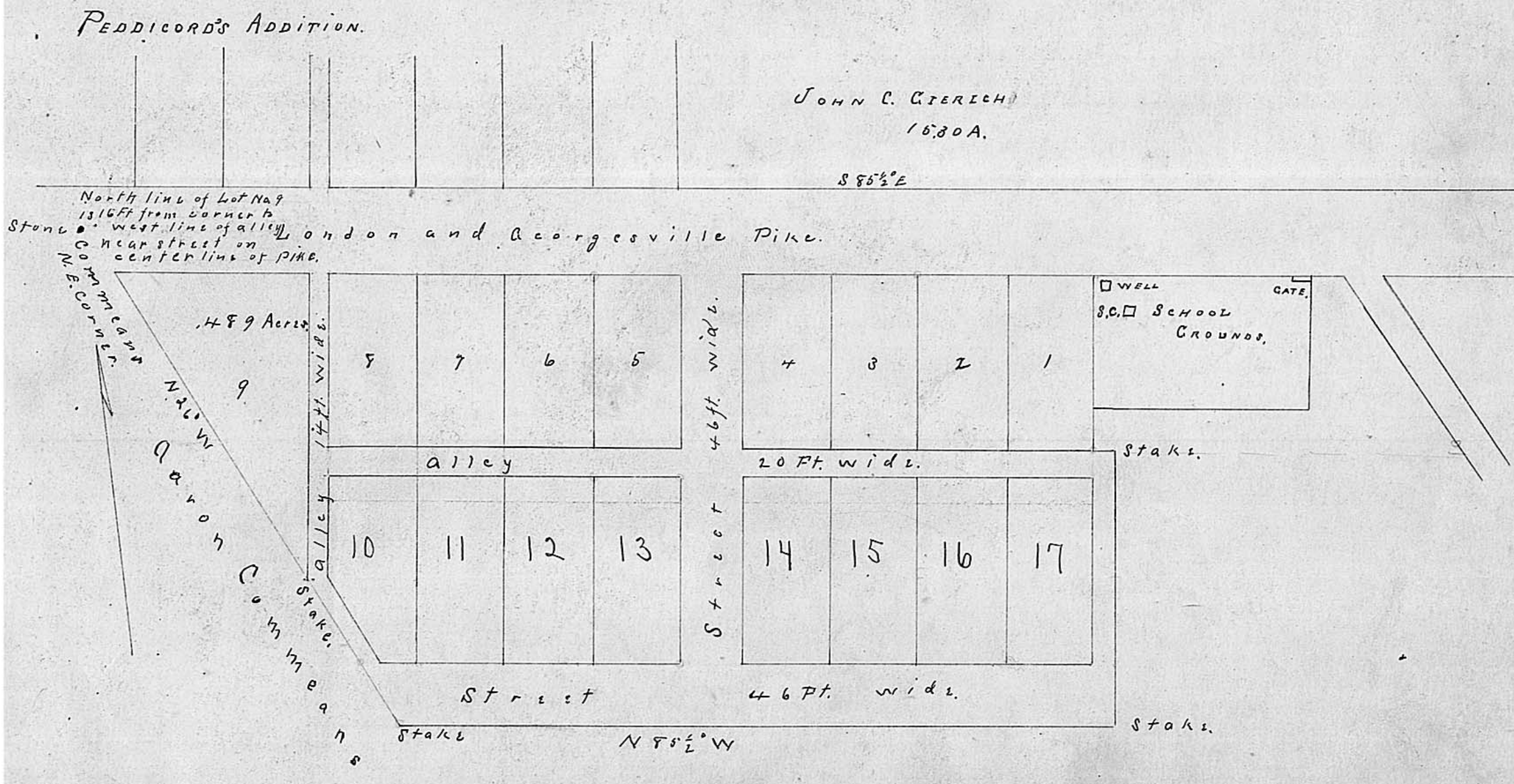


Gilroy. Gierich's Addition.



Gilroy Gierich's Addition.

Description of Lewis Gierich's addition to the Town of Gilroy surveyed and laid out September 3rd 1881 by Wm Reeder, being part of Survey No 5280 in the Virginia Military District entered in the name of James Bradford. Beginning at a stone in the middle of the London and Georgetown Pike North West Corner to School lot of Sub. District No 4 in Fairfield Township Madison County Ohio and running at right angles to the center line of said pike North 85 1/2° W. Lots Nos. 1, 2, 3, 4, 5, 6, 7, 8, & 9 fronting on said pike. Lots Nos 1 to 8 inclusive are 66 feet in front and running back 165 feet from the center line of said pike to the north line of an alley 20 feet wide. Lot No 9 is a triangular one bounded on the East, by an alley 14 feet wide and measuring 265 feet from the center of the pike to the division line between the lands of Aaron Commeaus and Lewis Gierich & also measuring on the north line with the center line of Pike 161 feet from the North East Corner of Commeaus land to the west line of said Alley, and lots Nos 10, 11, 12, 13, 14, 15, 16 & 17 are 66 feet wide fronting on a Street 46 feet wide running parallel with said pike and are 165 feet in length from the South line of said 20 foot alley to the center line of said 46 foot Street. Lot No 10 is a fractional one having 16 feet front on said Street being cut by an Alley 14 ft wide running N 26° W along the division line of said Commeaus and Gierich's lands until it meets the alley bounding Lots Nos. 8 & 10 on their west line, and running at right angles to the center line of the London and Georgetown Pike and with Streets and alleys as follows.

An Alley 14 feet wide bounding the East line of Lot No 17 and running from the north line of Alley 20 feet wide to the South line of Street 46 ft wide an Alley 20 feet wide separating lots Nos 1 to 8 inclusive from Lots Nos 10 to 17 inclusive and running from the Alley bounding the East line of Lot No 17 to the alley bounding the E line of Lot No 9 a Street 46 ft wide bounding the South lines of Lots nos 10 to 17 inclusive and running parallel with the London and Georgetown Pike from the Alley bounding the east line of Lot No 17 to the division line between the lands of Lewis Gierich and Aaron Commeaus. An Alley 14 feet wide, the west line of which is the said division line and east line of Lot No 9 Also a Street 46 feet wide separating Lots Nos 4 and 14 from lots nos 5 & 13, running from the London and Georgetown Pike to the above mentioned Street, all of which is fully shown in the above plat.

Louis Gierich

I do hereby certify that the above is a true plat and description of Louis Gierich's addition to the Town of Gilroy this the 17th day of September 1881.

Wm Reeder, Surveyor.

Lilly Chapel, Madison County Ohio, The State of Ohio, County of Madison, S. D.

Before me the undersigned a Notary Public personally appeared Lewis Gierich the owner of the above described Lots & Plat who signed the same this the 18th day of October 1881.

Sworn to before me and subscribed in my presence this 18th day of October 1881.

S. H. Edwards, Notary Public.

Notary Public,

Received, Dec 9th 1881. Recorded, Dec 13th 1881. S. P. Trumper, Recorder.

Original Record, Plat Book K, Vol 1, Pages 119 & 120