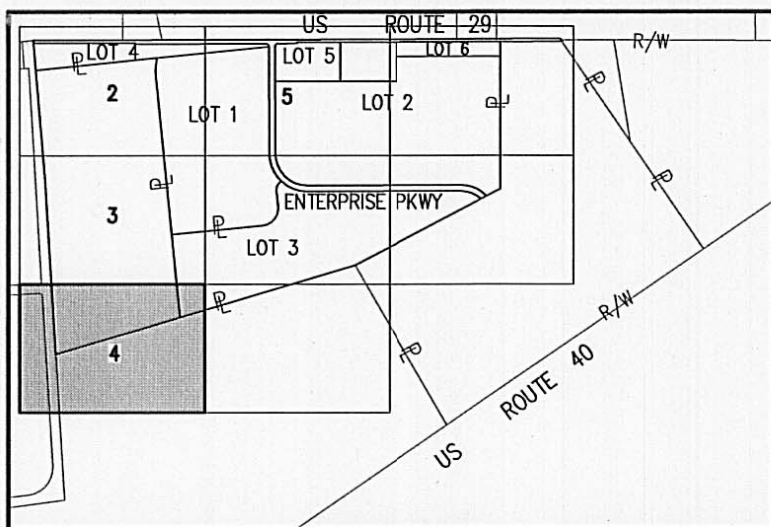


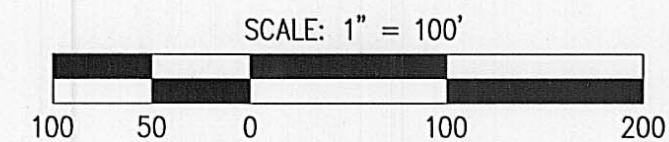
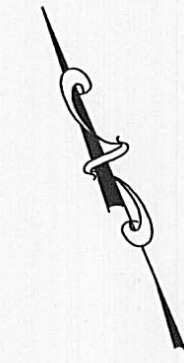
SUBDIVISION OF PARK 70 AT WEST JEFFERSON PHASE II



INDEX MAP
NTS

201200001783
Filed for Record in
MADISON COUNTY, OHIO
CHARLES E REED, RECORDER
04-18-2012 At 09:08 am.
PLAT 43.60

B359



SCALE: 1" = 100'

BASIS OF BEARING
ARE BASED ON THE CENTERLINE OF STATE ROUTE 29, NORTH 67 DEGREES 15 MINUTES 00 SECONDS WEST. BASIS REFERENCES A RECORD LEGAL DESCRIPTION RECORDED IN O.R. VOLUME 126, PAGE 522

SYMBOLS AND ABBREVIATIONS

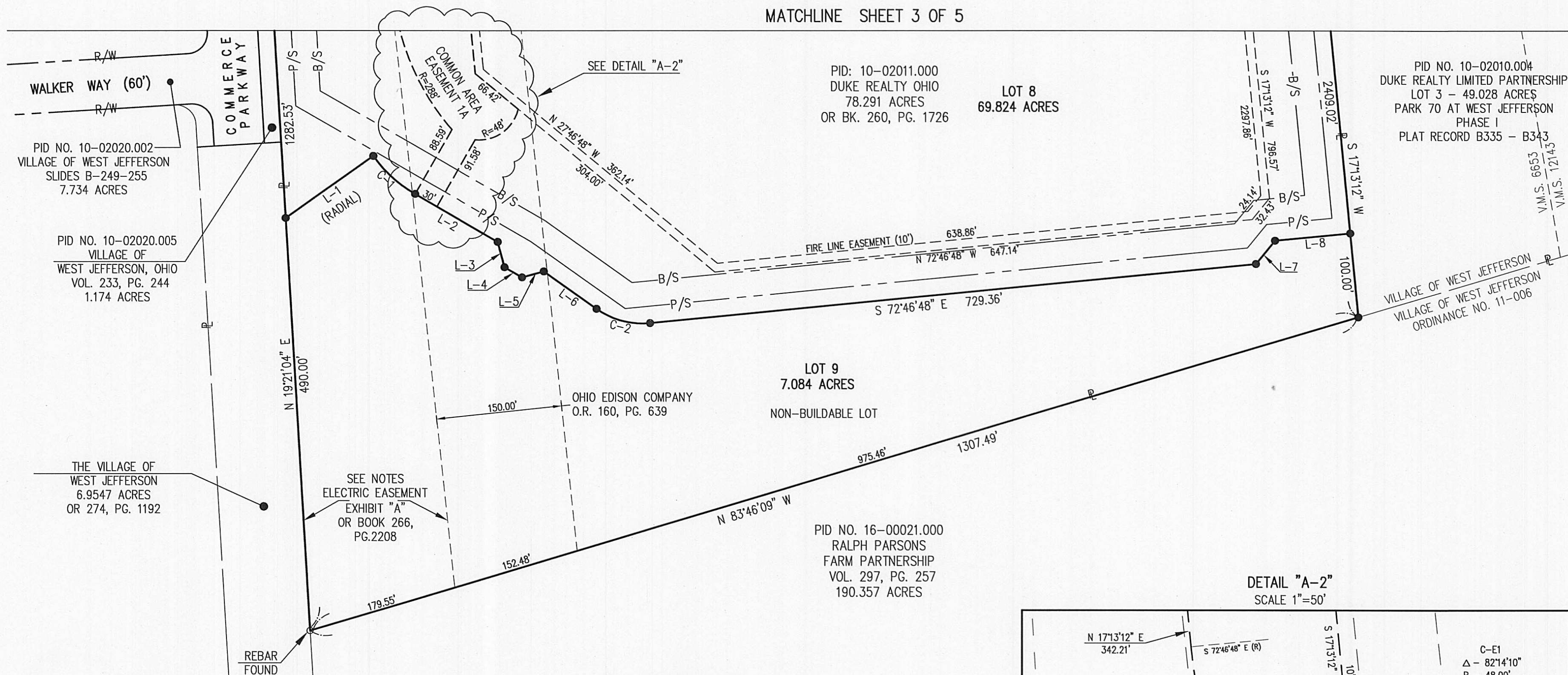
- 5/8"x30" REBAR SET W/ YELLOW I.D. CAP MARKED "BRH GROUP"
- 1" REBAR SET
- ▲ RAILROAD SPIKE SET
- MAG NAIL SET
- FOUND, AS LABELED
- △ RAILROAD SPIKE FOUND
- ⊠ MONUMENT FOUND
- R/W RIGHT-OF-WAY LINE
- ⊕ CENTERLINE
- ⊔ PROPERTY LINE
- V.M.S. VIRGINIA MILITARY SURVEY
- P/S 20' PARKING SETBACK
- B/S 50' BUILDING SETBACK

NOTES:

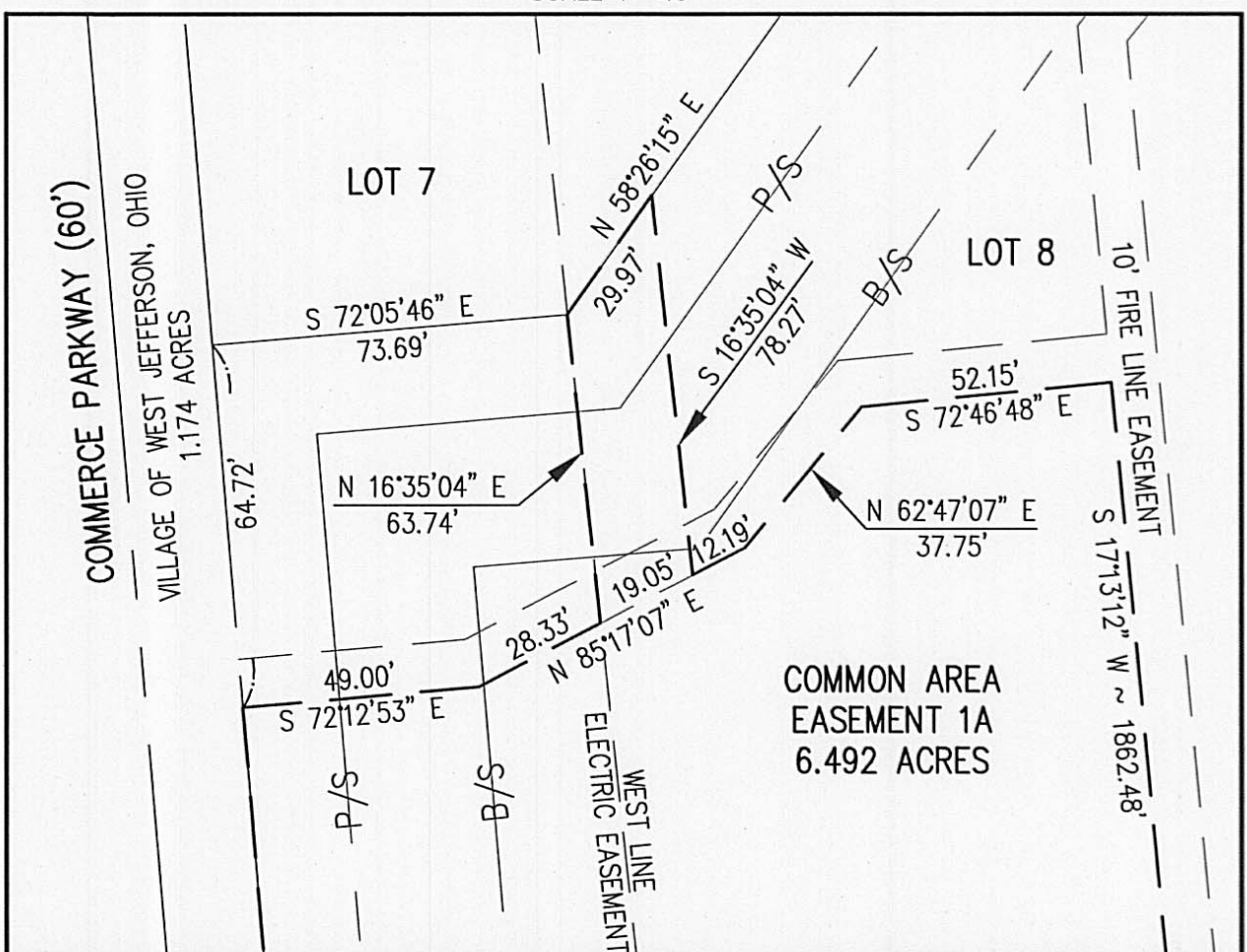
EXISTING GAS LINE EASEMENT COLUMBIA GAS OF OHIO, INC. 20' WIDE EASEMENT STRIP OR BOOK 266, PG. 311

OHIO EDISON COMPANY 150' WIDE EASEMENT STRIP OR BOOK 266, PG. 311
REDEFINED IN: FIRST AMENDMENT TO EASEMENT: O.R. BOOK 266, PG. 2208 TOGETHER WITH THAT 7.380 ACRE EASEMENT DESCRIBED IN EXHIBIT "A"

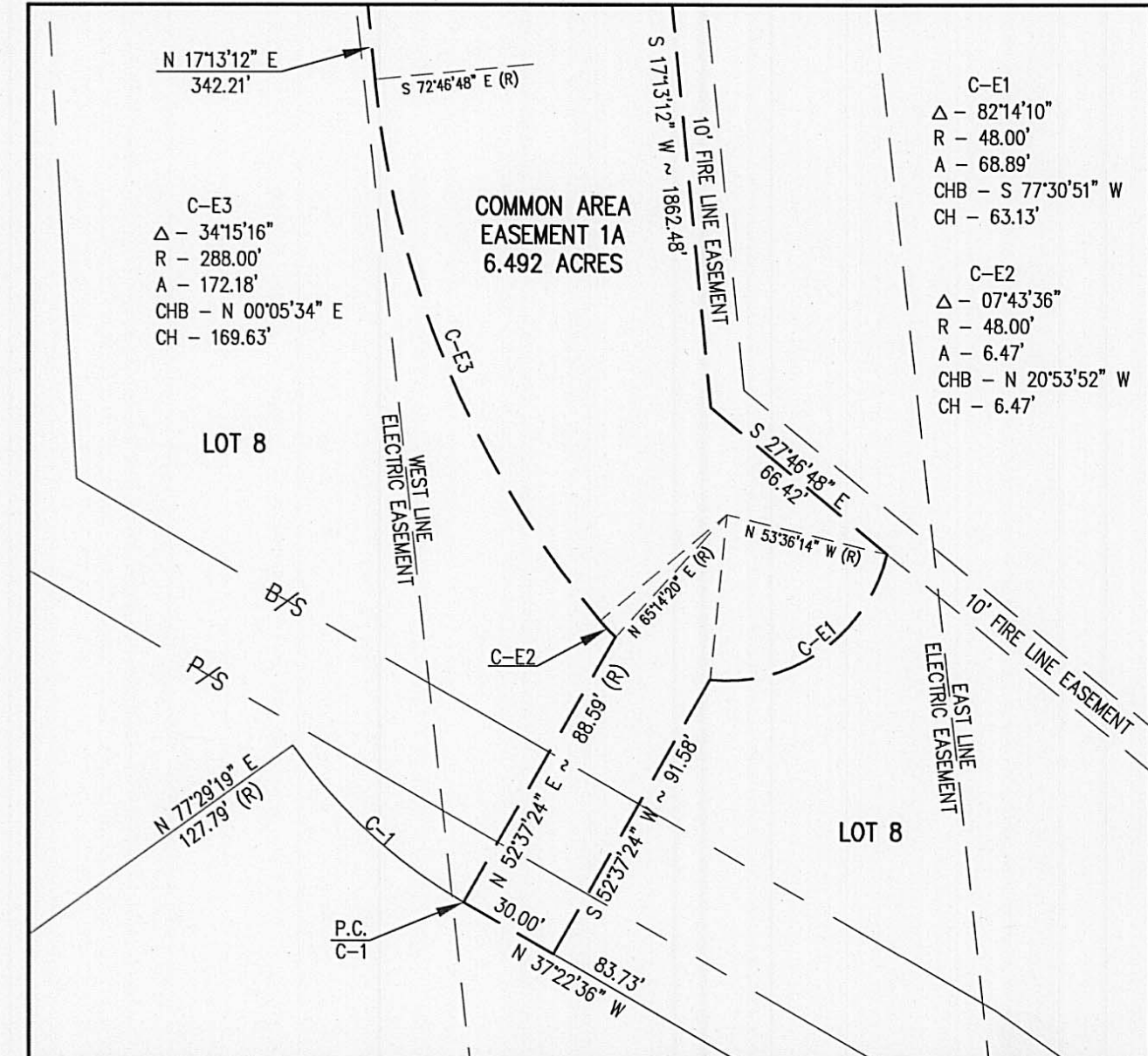
MATCHLINE SHEET 3 OF 5



DETAIL "A-1"
SCALE 1"=40'



DETAIL "A-2"
SCALE 1"=50'



CURVE DATA

- C-1
Δ - 24'51"54"
R - 156.00'
A - 67.70'
CHB - S 24'56"39" E
CH - 67.17'
- C-2
Δ - 40'45"44"
R - 95.00'
A - 67.58'
CHB - S 52'23"56" E
CH - 66.17'

BOUNDARY LINE DATA

- L1 - N 77'29"19" E 127.79' (RADIAL)
L2 - S 37'22"36" E 113.73'
L3 - S 07'37"24" W 31.11'
L4 - S 37'22"36" E 24.14'
L5 - S 82'22"36" E 26.89'
L6 - S 32'01"04" E 77.04'
L7 - N 62'13"12" E 35.93'
L8 - S 72'46"48" E 90.00'

PREPARED BY:



Engineering & Surveying
444 South Front Street
Columbus, Ohio 43215
Phone: (614) 220-9122
Fax: (614) 224-6607
Email: info@brhgroup.com