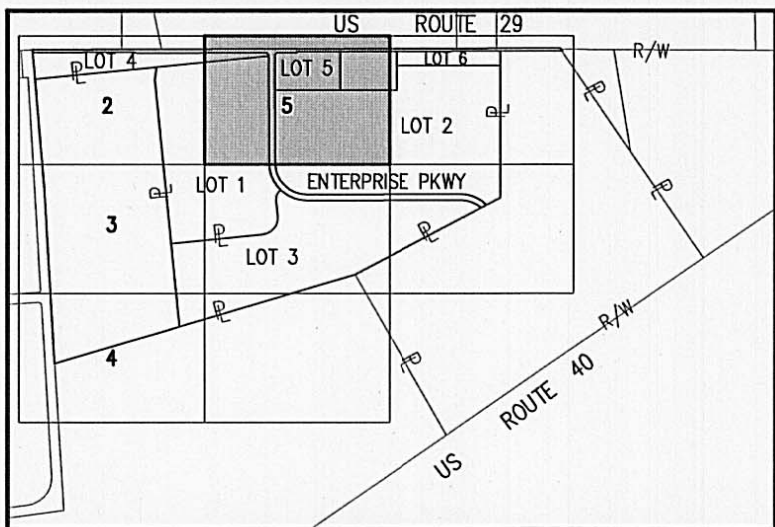
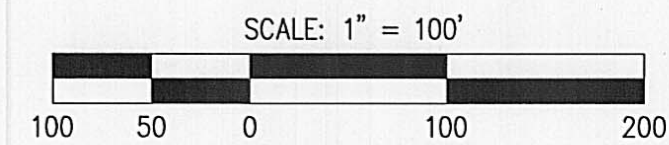


# SUBDIVISION OF PARK 70 AT WEST JEFFERSON PHASE II



INDEX MAP  
NTS

201200001784  
Filed for Record in  
MADISON COUNTY, OHIO  
CHARLES E REED, RECORDER  
04-18-2012 At 09:08 am.  
PLAT 43.60



### SYMBOLS AND ABBREVIATIONS

- 5/8"x30" REBAR SET W/ YELLOW I.D. CAP MARKED "BRH GROUP"
- 1" REBAR SET
- ▲ RAILROAD SPIKE SET
- MAG NAIL SET
- FOUND, AS LABELED
- △ RAILROAD SPIKE FOUND
- ⊠ MONUMENT FOUND
- R/W RIGHT-OF-WAY LINE
- ⊕ CENTERLINE
- ⊔ PROPERTY LINE
- V.M.S. VIRGINIA MILITARY SURVEY
- PRK. SB. PARKING SETBACK
- BLDG. SB. BUILDING SETBACK

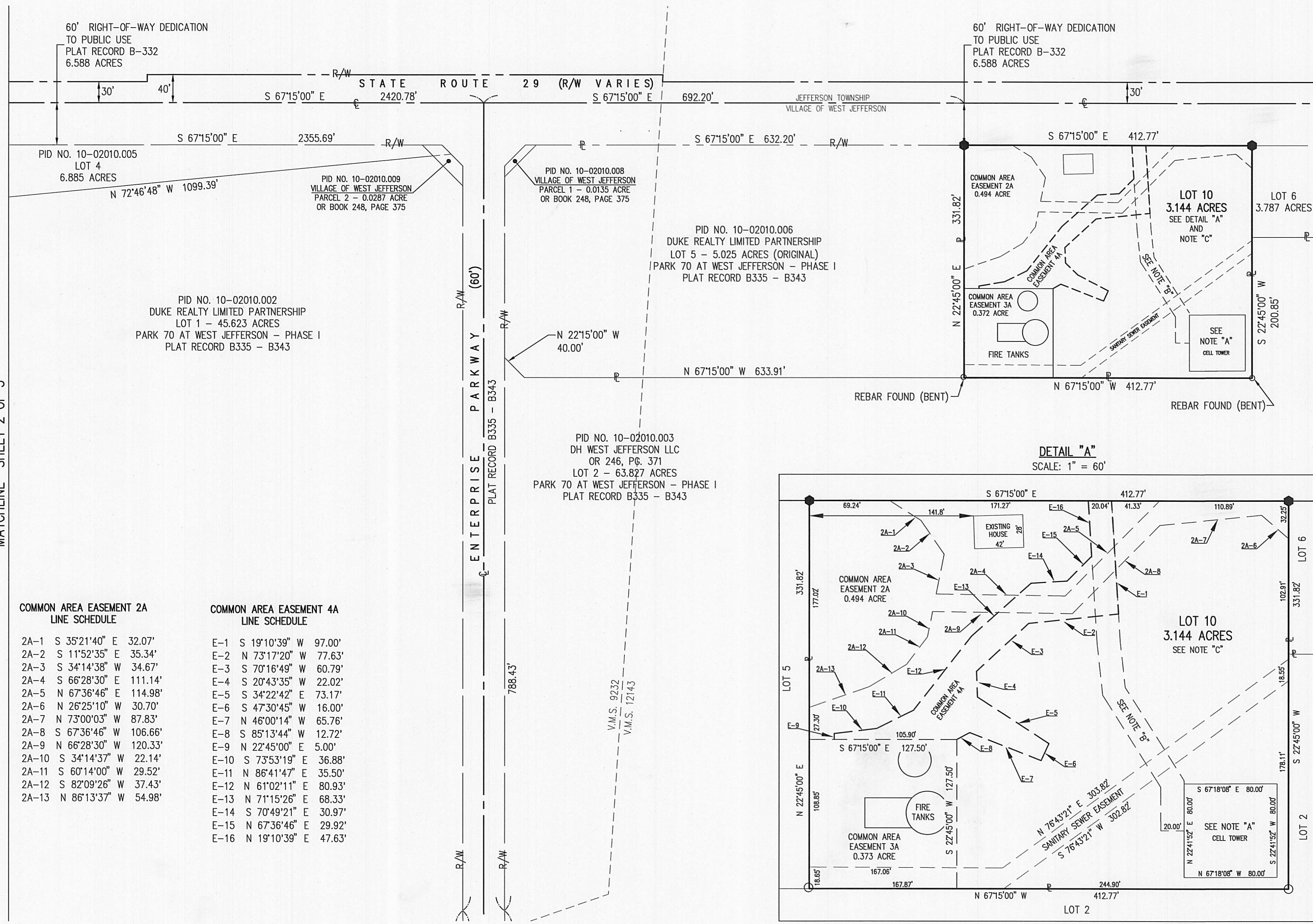
### NOTES:

- "A" AMERICAN TOWER, L.P.  
0.147 ACRE  
MEMORANDUM OF LEASE  
OR BOOK 104, PG. 2224
- "B" AMERICAN TOWER, L.P.  
20' WIDE ACCESS & UTILITY  
EASEMENT  
OR BOOK 104, PG. 2224
- "C" PID NO. 16-00009.000  
DUKE REALTY  
LIMITED PARTNERSHIP  
3.713 ACRES (ORIGINAL)  
OR BOOK 233, PG. 346

PREPARED BY:  
**BRH**  
Group, Inc.  
Engineering & Surveying

444 South Front Street  
Columbus, Ohio 43215  
Phone: (614) 220-9122  
Fax: (614) 224-6607  
Email: info@brhgroup.com

MATCHLINE SHEET 2 OF 5



#### COMMON AREA EASEMENT 2A LINE SCHEDULE

2A-1	S 35°21'40" E	32.07'
2A-2	S 11°52'35" E	35.34'
2A-3	S 34°14'38" W	34.67'
2A-4	S 66°28'30" E	111.14'
2A-5	N 67°36'46" E	114.98'
2A-6	N 26°25'10" W	30.70'
2A-7	N 73°00'03" W	87.83'
2A-8	S 67°36'46" W	106.66'
2A-9	N 66°28'30" W	120.33'
2A-10	S 34°14'37" W	22.14'
2A-11	S 60°14'00" W	29.52'
2A-12	S 82°09'26" W	37.43'
2A-13	N 86°13'37" W	54.98'

#### COMMON AREA EASEMENT 4A LINE SCHEDULE

E-1	S 19°10'39" W	97.00'
E-2	N 73°17'20" W	77.63'
E-3	S 70°16'49" W	60.79'
E-4	S 20°43'35" W	22.02'
E-5	S 34°22'42" E	73.17'
E-6	S 47°30'45" W	16.00'
E-7	N 46°00'14" W	65.76'
E-8	S 85°13'44" W	12.72'
E-9	N 22°45'00" E	5.00'
E-10	S 73°53'19" E	36.88'
E-11	N 86°41'47" E	35.50'
E-12	N 61°02'11" E	80.93'
E-13	N 71°15'26" E	68.33'
E-14	S 70°49'21" E	30.97'
E-15	N 67°36'46" E	29.92'
E-16	N 19°10'39" E	47.63'

#### DETAIL "A" SCALE: 1" = 60'

