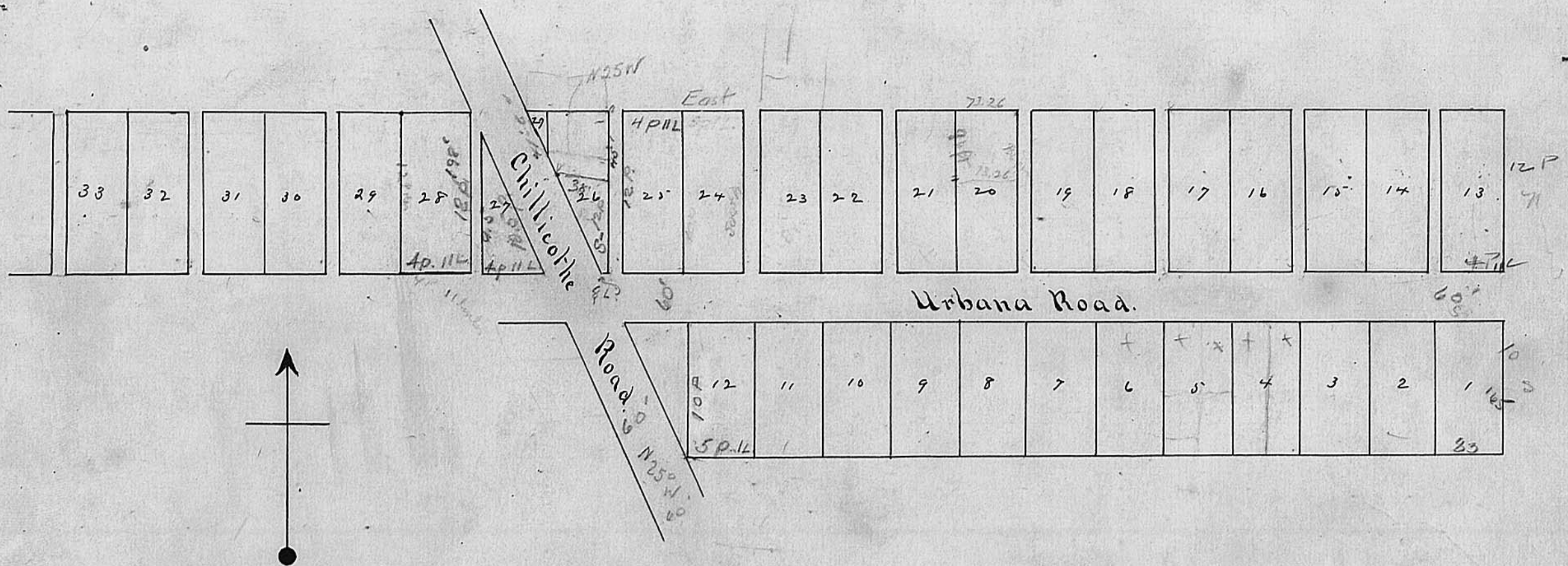


Pleasant Valley



For Annexation of 24.579 Acres to the Village of Plain City, see Ord Record Vol. 289, page 903.

Filed: March 19, 1992 - Margaret S. Rife, Recorder - By: Naomi W. Green, Deputy.

For Annexation of 121.379 Acres to the Village of Plain City, see Ord Record Vol. 289, pg. 911.

Filed: March 19, 1992 - Margaret S. Rife, Recorder - By: Naomi W. Green, Deputy.

For Annexation of 0.788 Acres to the Village of Plain City, see Ordinance no. 592 in Ord Record Vol. 293, pg. 214.

Filed: Dec. 28, 1992 - Margaret S. Rife, Recorder - By: Naomi W. Green, Deputy.

For Annexation of 16.2948 Acres to the Village of Plain City, see Ord Record Vol. 291, pg 375 & misc. Vol. 8, pg 19.

Filed: Nov. 11, 1993 & Jan. 26, 1994. - Sean Barton, Recorder - By: Naomi W. Green, Deputy.

For Annexation of 2.98 Acres to the Village of Plain City, see Ord Record Vol. 287, page 327. Filed: June 12, 1991 - Margaret S. Rife, Recorder by: Naomi W. Green, Deputy.

Pleasant Valley.

Recorders Office July 28th 1823. The town of Pleasant Valley surveyed for Isaac Bigelow the proprietor said town is situated on the road leading from Worthington to Urbana on the south side of Darby Creek in Darby Township Madison County. The lots on the south side of the Urbana road measure each south ten poles and west five poles and one link the lots on the north side of the Urbana road measure each north twelve poles and west 4 poles and 6 eleven links except lots No 26 and 27. lot No 26 is divided into two parts by the Chillicothe road the north east part of said lot from the north east corner measures south 13 poles and west 8 links N 35 W 9 1/2 poles and N. E 4 Poles and 11 links lot No 27 from the S. E corner measures N 35. W 10 1/2 poles thence S 9 1/2 poles E 4 poles and 11 links. The Urbana road runs and is 60 feet through the town. The Chillicothe road crosses the Urbana road near lot No 12 leaving lots 26 and 27 as above mentioned said road runs N 35. W and is 60 feet wide. on the south side of the Urbana road there is no alleys. on the north side of said road there is ten alleys as laid down on the Plat. The alleys run from the said road N 12 poles and thirty links wide all the above mentioned roads and alleys in said town are reserved for public use. Surveyed June 24 1823.

Simeon Hager, Surveyor.

For Ordinance and Amendment concerning this plat, see Ord Record Vol. 222 pages 399, 400, 401. Filed: December 24, 1974. Attest: G. M. & Thine, Clerks By: Margaret S. Rife, Deputy.